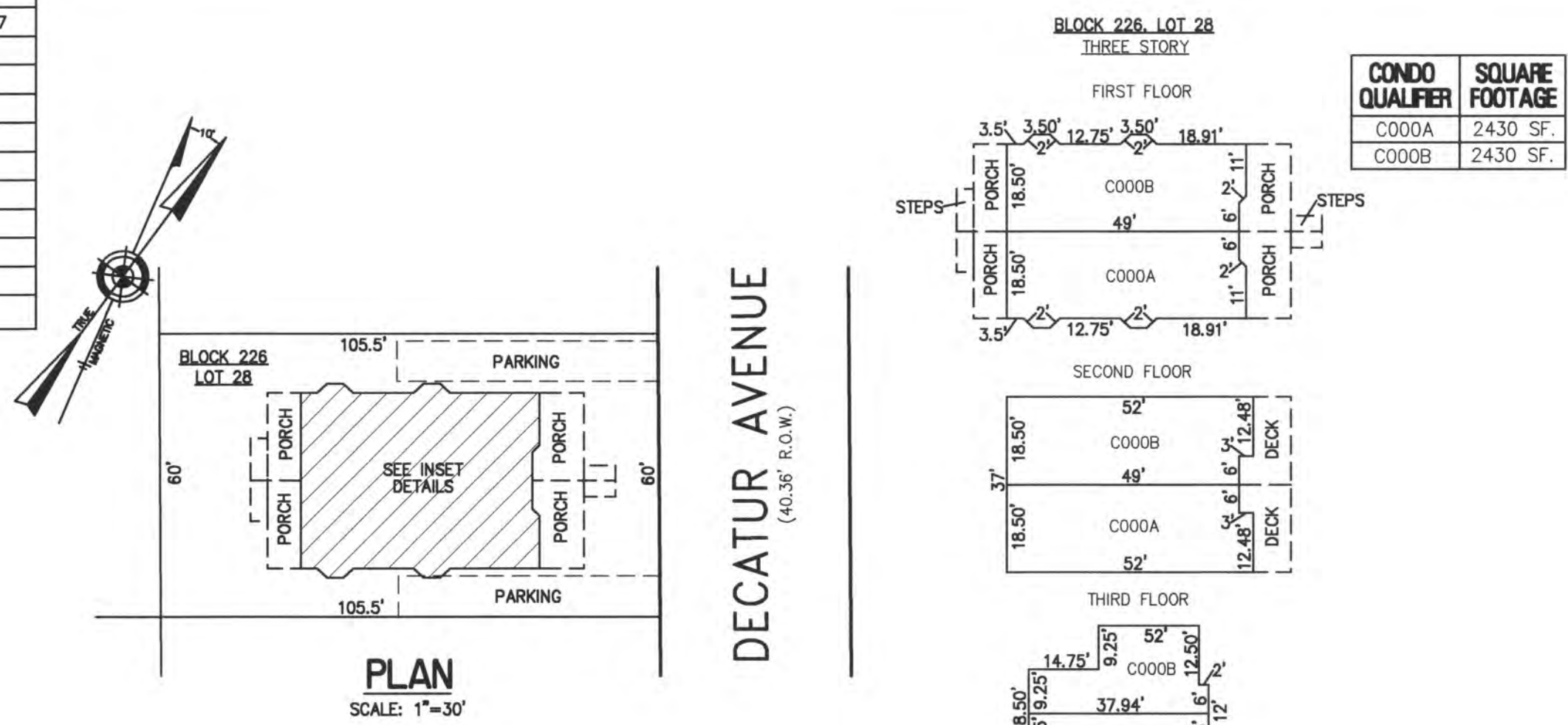
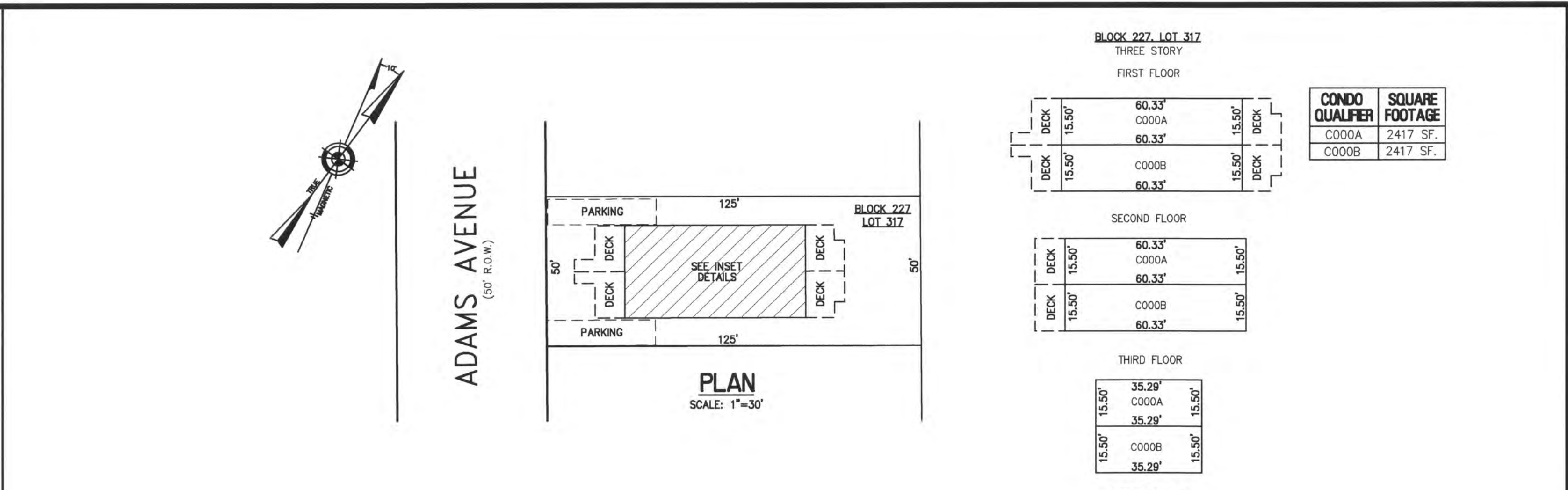


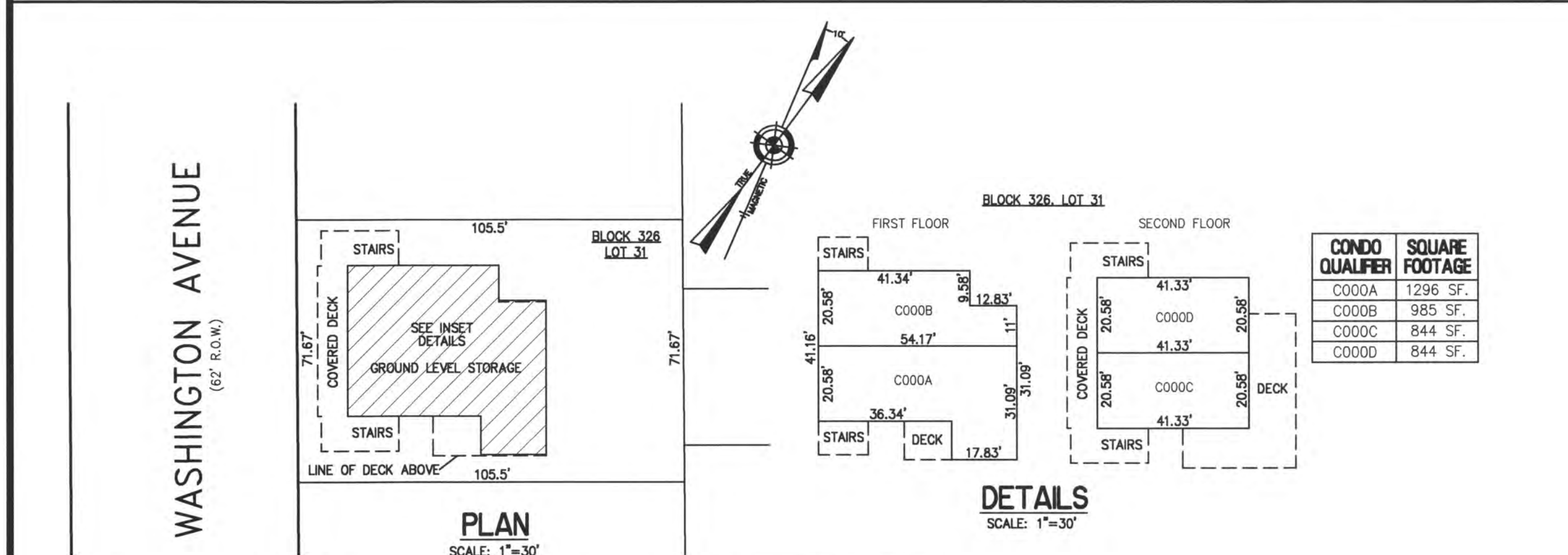
REVISIONS		
12-11-2015	CHARLES E. ADAMSON	42627



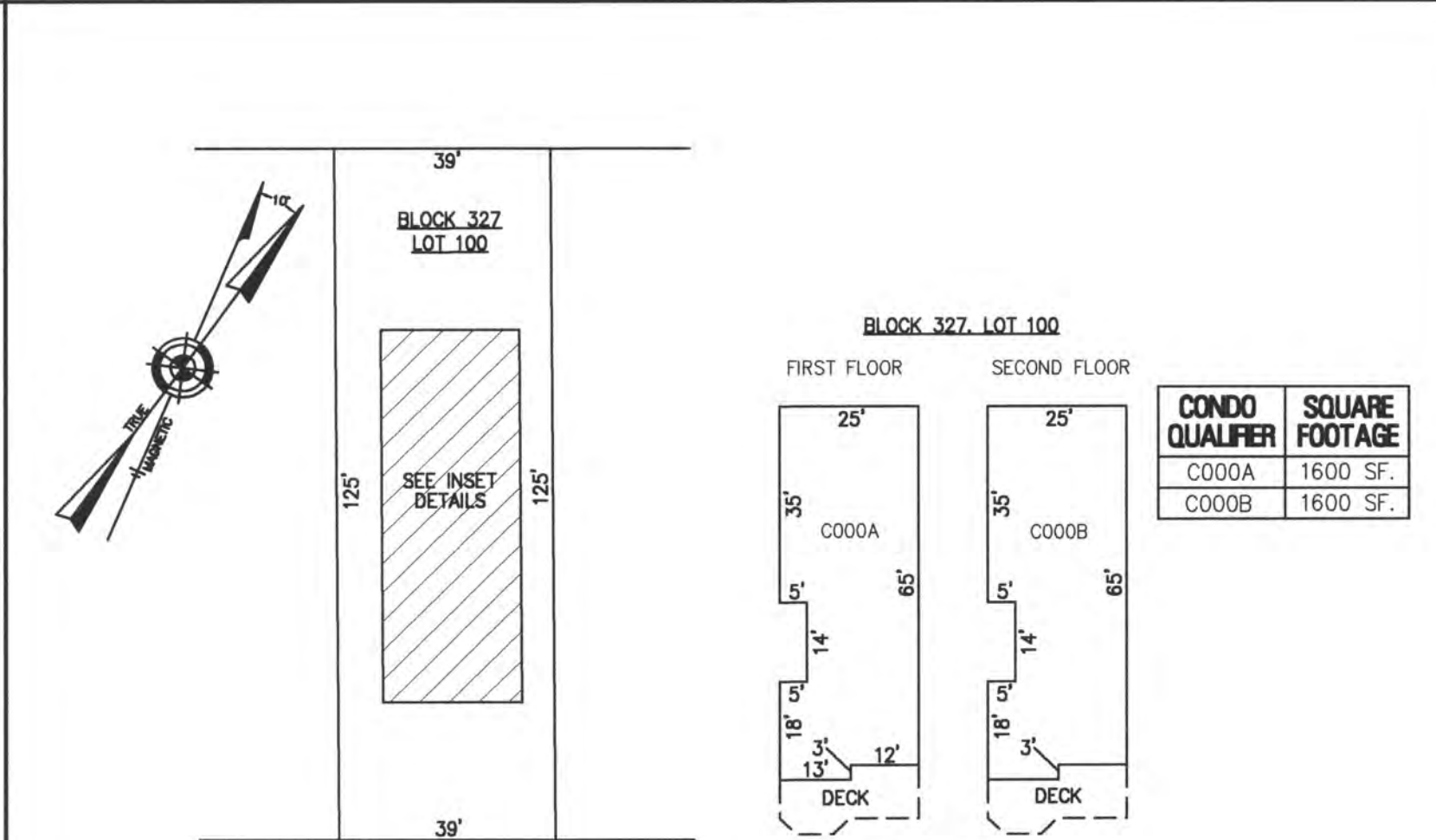
BLOCK 226, LOT 28
12 NORTH DECATUR AVENUE CONDOMINIUM
12 NORTH DECATUR AVENUE
INSET "4K"



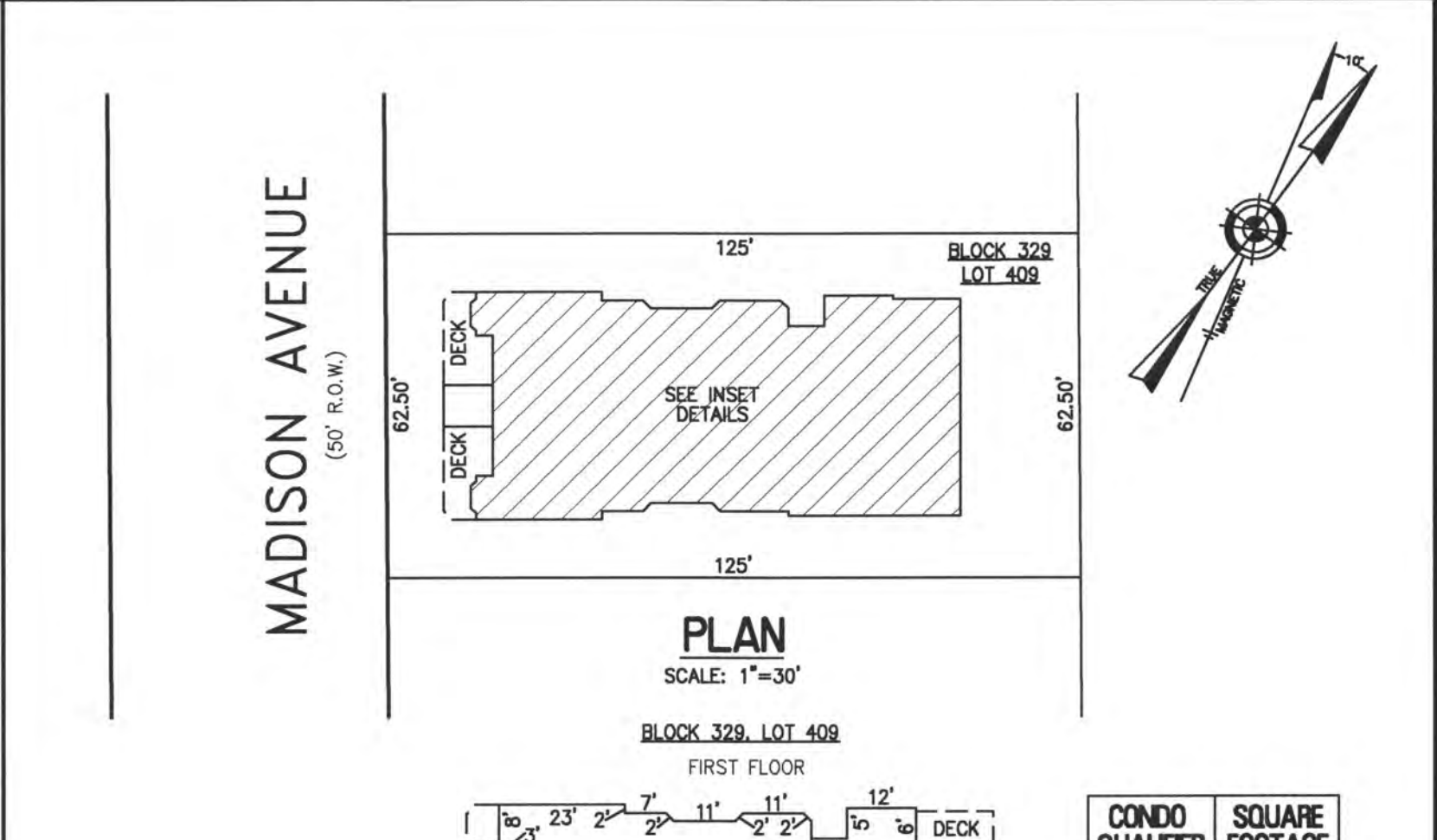
BLOCK 227, LOT 317
19 NORTH ADAMS AVENUE CONDOMINIUM
19 NORTH ADAMS AVENUE
INSET "4R"



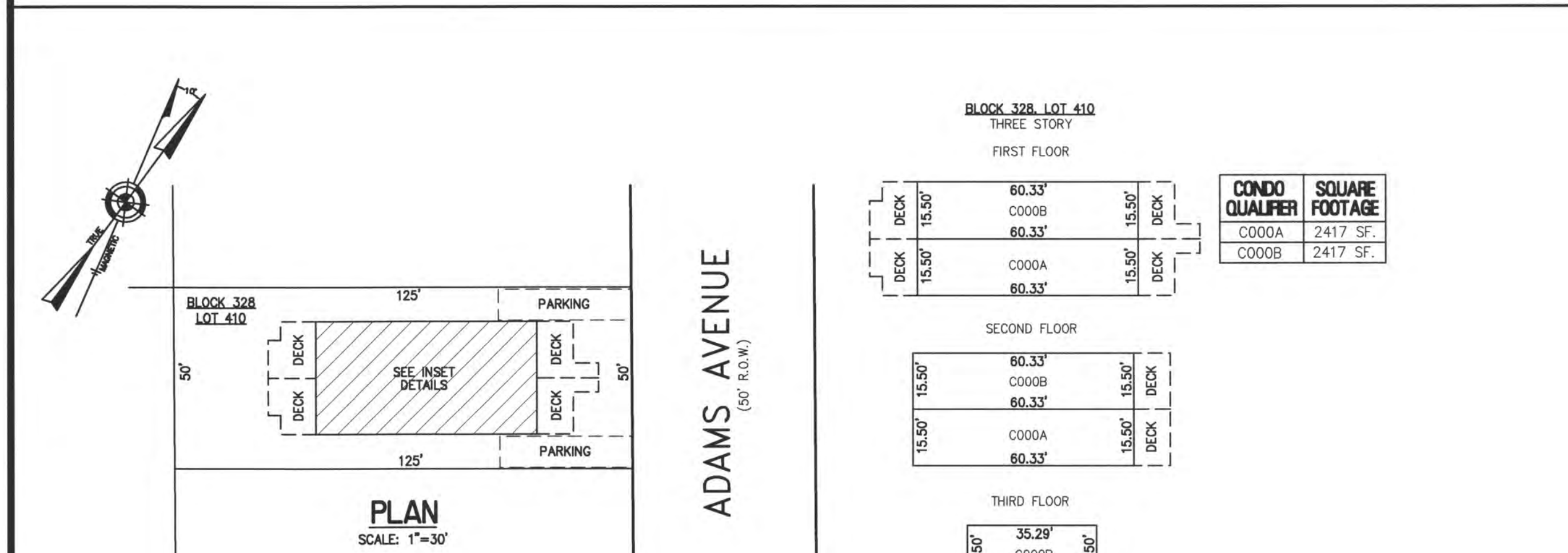
BLOCK 326, LOT 31
125 CONDOMINIUM
125 WASHINGTON AVENUE
INSET "4P"



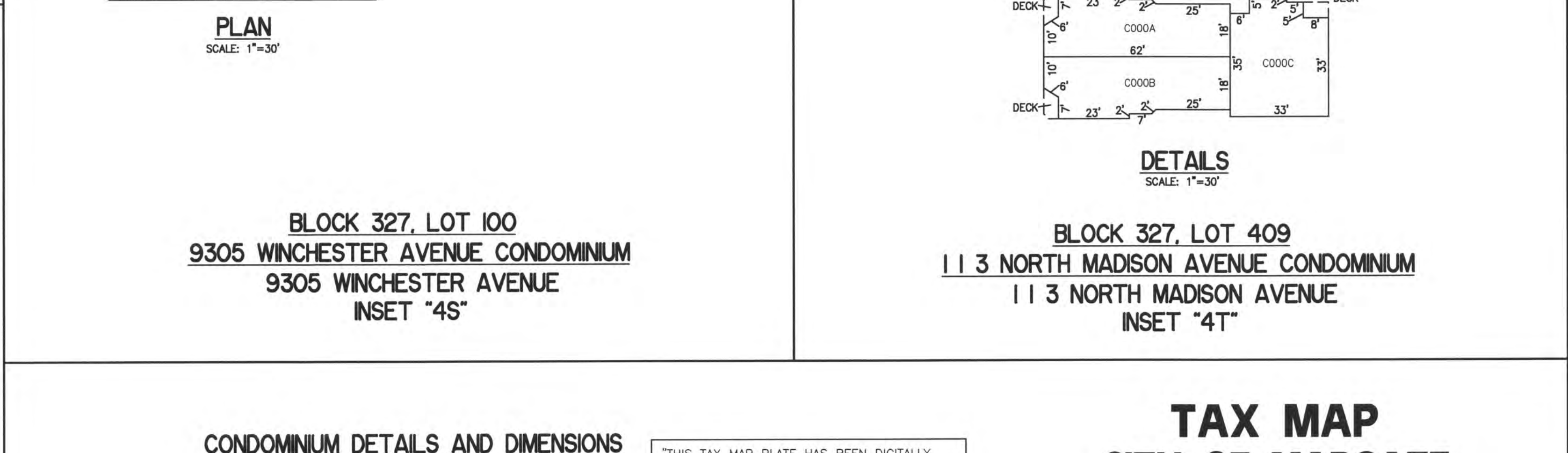
BLOCK 327, LOT 100
9305 WINCHESTER AVENUE CONDOMINIUM
9305 WINCHESTER AVENUE
INSET "4S"



BLOCK 327, LOT 409
113 NORTH MADISON AVENUE CONDOMINIUM
113 NORTH MADISON AVENUE
INSET "4T"




BLOCK 328, LOT 410
114 NORTH ADAMS AVENUE CONDOMINIUM
114 NORTH ADAMS AVENUE
INSET "4Q"



CONDOMINIUM DETAILS AND DIMENSIONS
 BLOCK 226, LOT 28
 BLOCK 227, LOT 317
 BLOCK 326, LOT 31
 BLOCK 327, LOT 100
 BLOCK 327, LOT 409
 BLOCK 328, LOT 410
 SEE PLATE 5

"THIS TAX MAP PLATE HAS BEEN DIGITALLY DRAWN USING COMPUTER-AIDED DRAFTING/DESIGN (CADD) & COORDINATE GEOMETRY (COGO). IT IS BASED ON THE ORIGINAL DIGITALLY DRAWN TAX MAP PLATE BEARING THE OFFICIAL NEW JERSEY DIVISION TAXATION APPROVAL STAMP WITH APPROVAL DATE 6-3-2005 SERIAL NUMBER 846 AND SIGNATURES OF SIGNERS' THOMAS J. REILLY, CHIEF, LOCAL PROPERTY, FIELD ASSISTANCE. SANTO C. DIDONATO, SUPERVISING FIELD REPRESENTATIVE. THE ORIGINAL DIGITALLY DRAWN TAX MAP PLATE WITH THE OFFICIAL APPROVAL STAMP IS ON FILE WITH REMINGTON, VERNICK & WALBERG ENGINEERS."

TAX MAP
CITY OF MARGATE
 ATLANTIC COUNTY NEW JERSEY
 SCALE: AS NOTED DATE: 1-20-2015
CRAIG F. REMINGTON LAND SURVEYOR LIC. NO. 23924

REMINGTON, VERNICK & WALBERG ENGINEERS
 24 GA 28048700
 845 N. MAIN STREET, PLEASANTVILLE, NJ 08232
 (609) 645-7100, FAX (609) 645-7076
 WEB SITE ADDRESS: WWW.RVW.COM