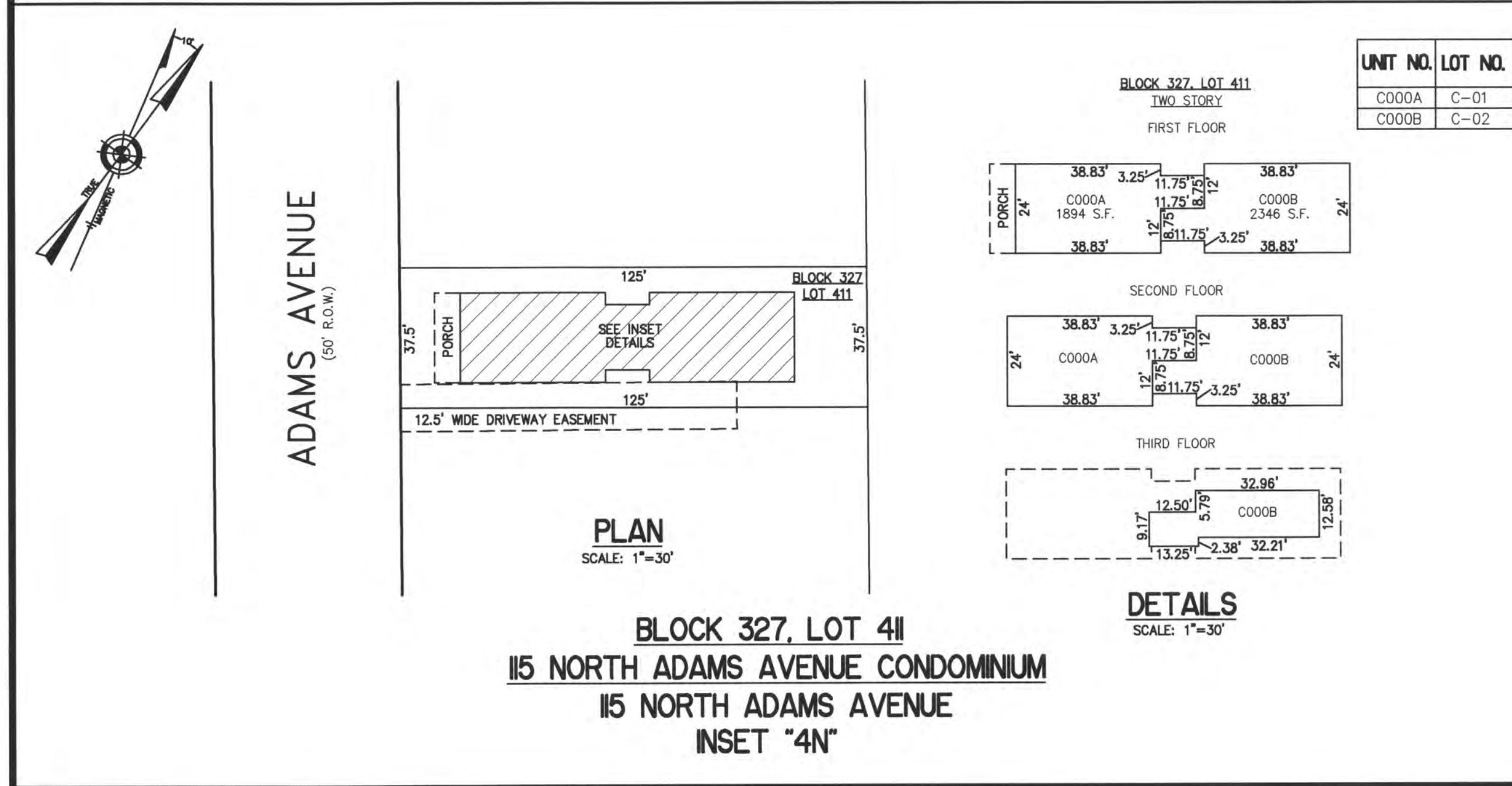
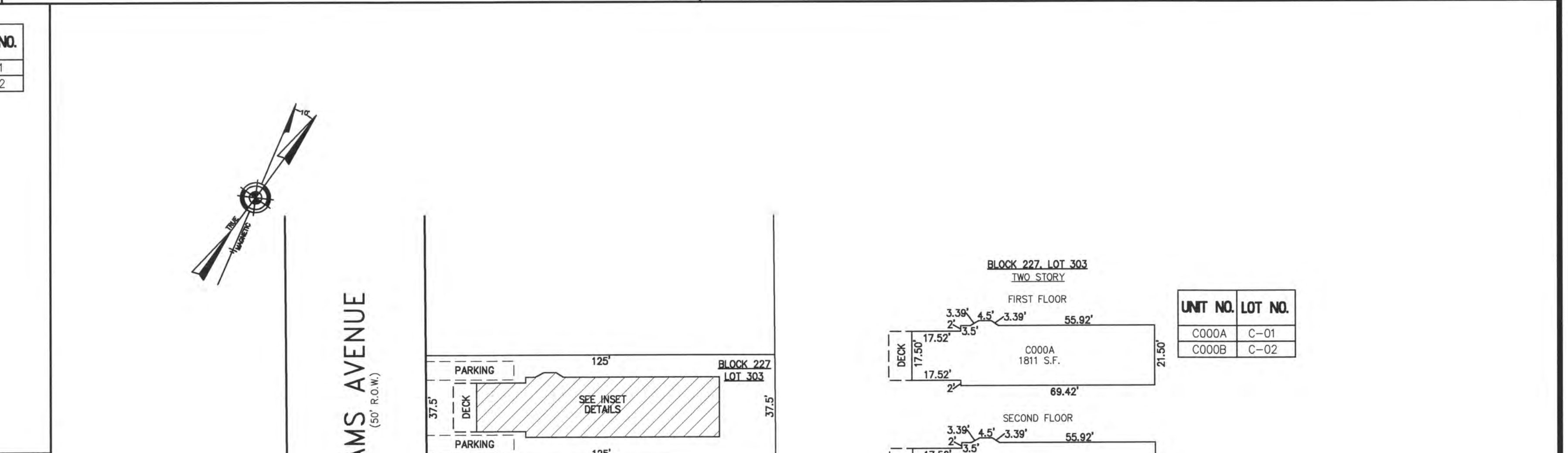
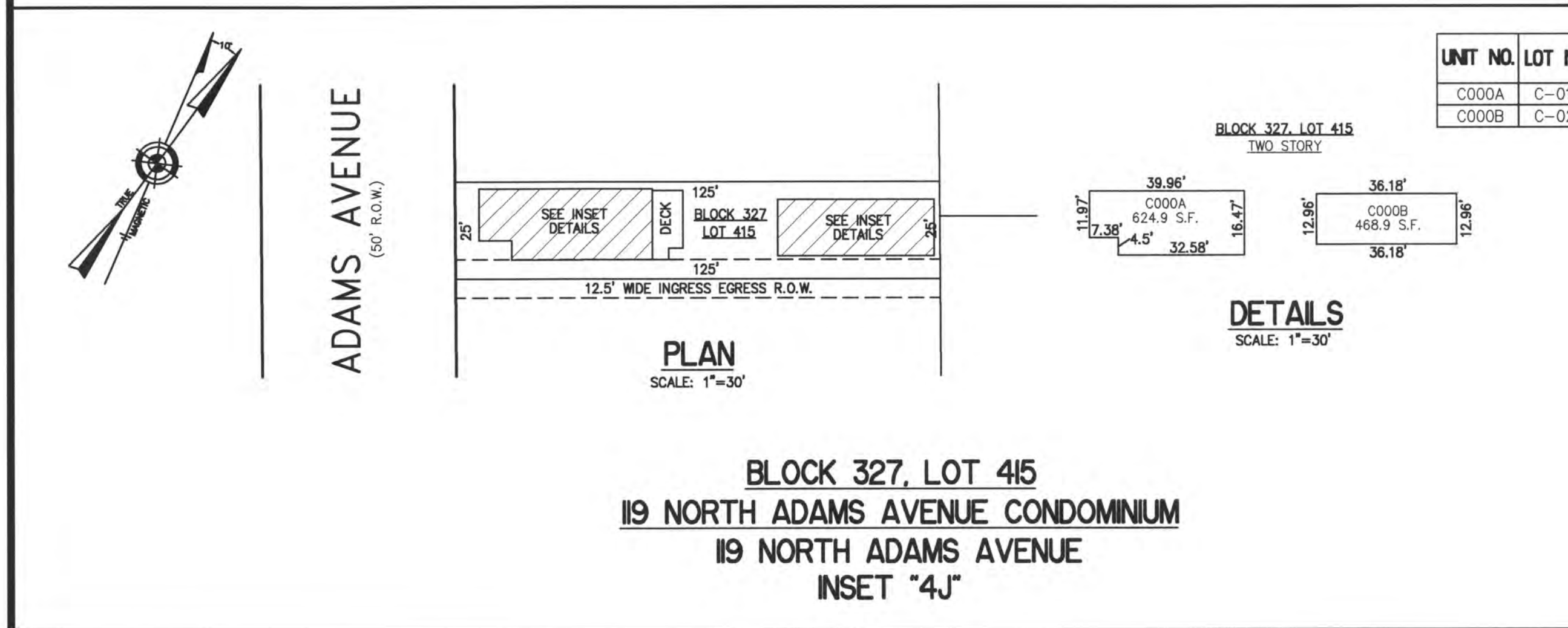
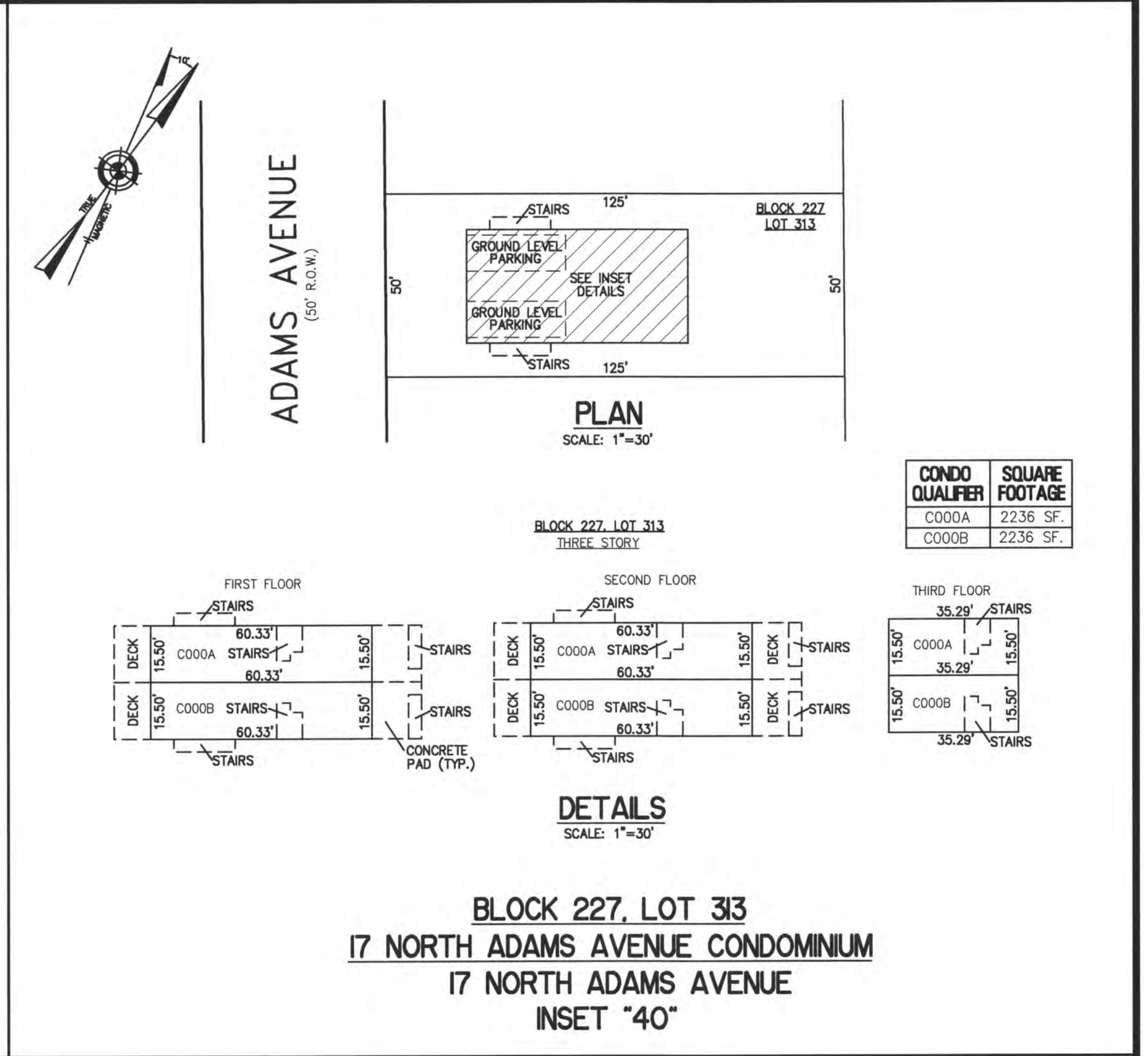
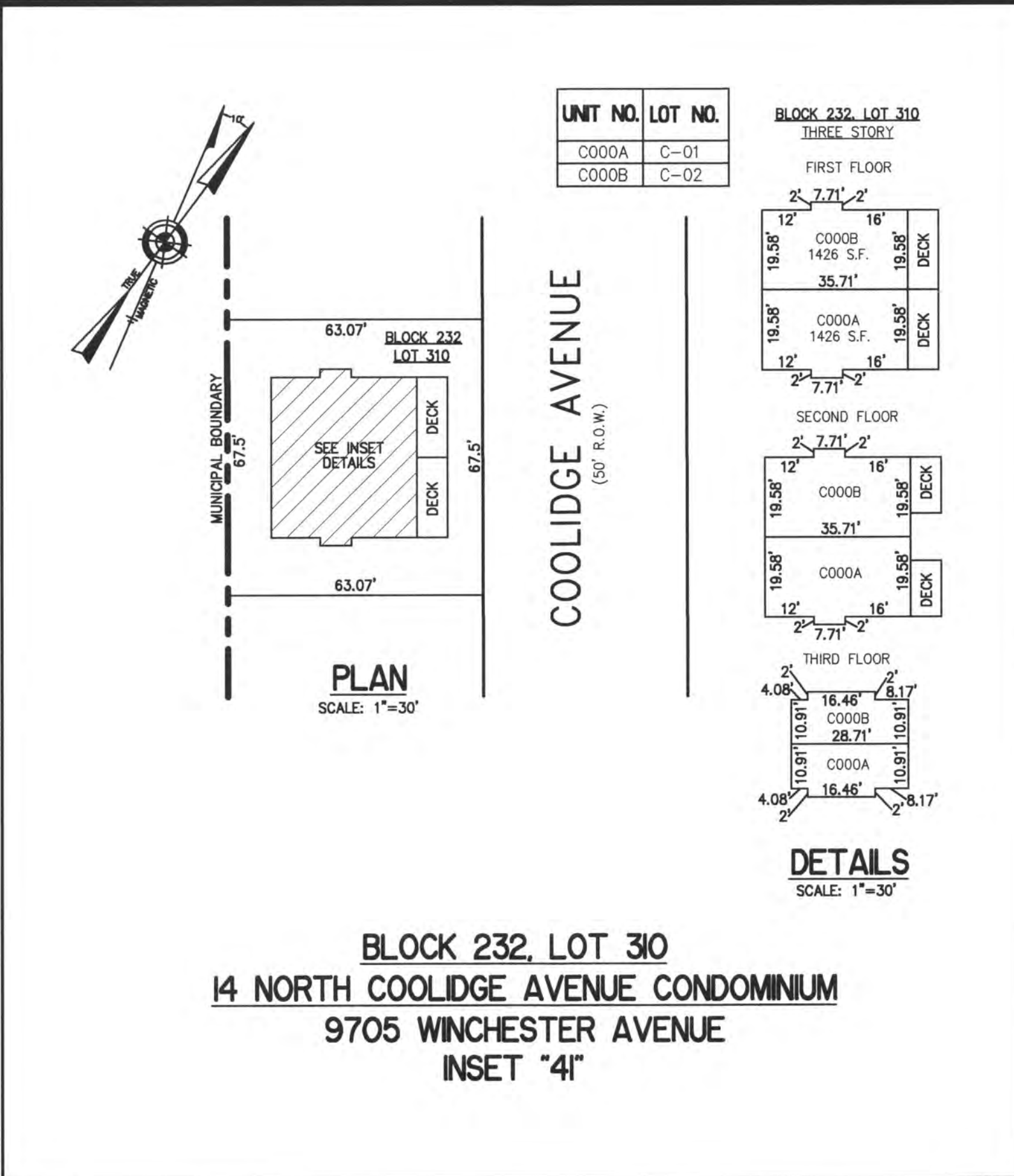
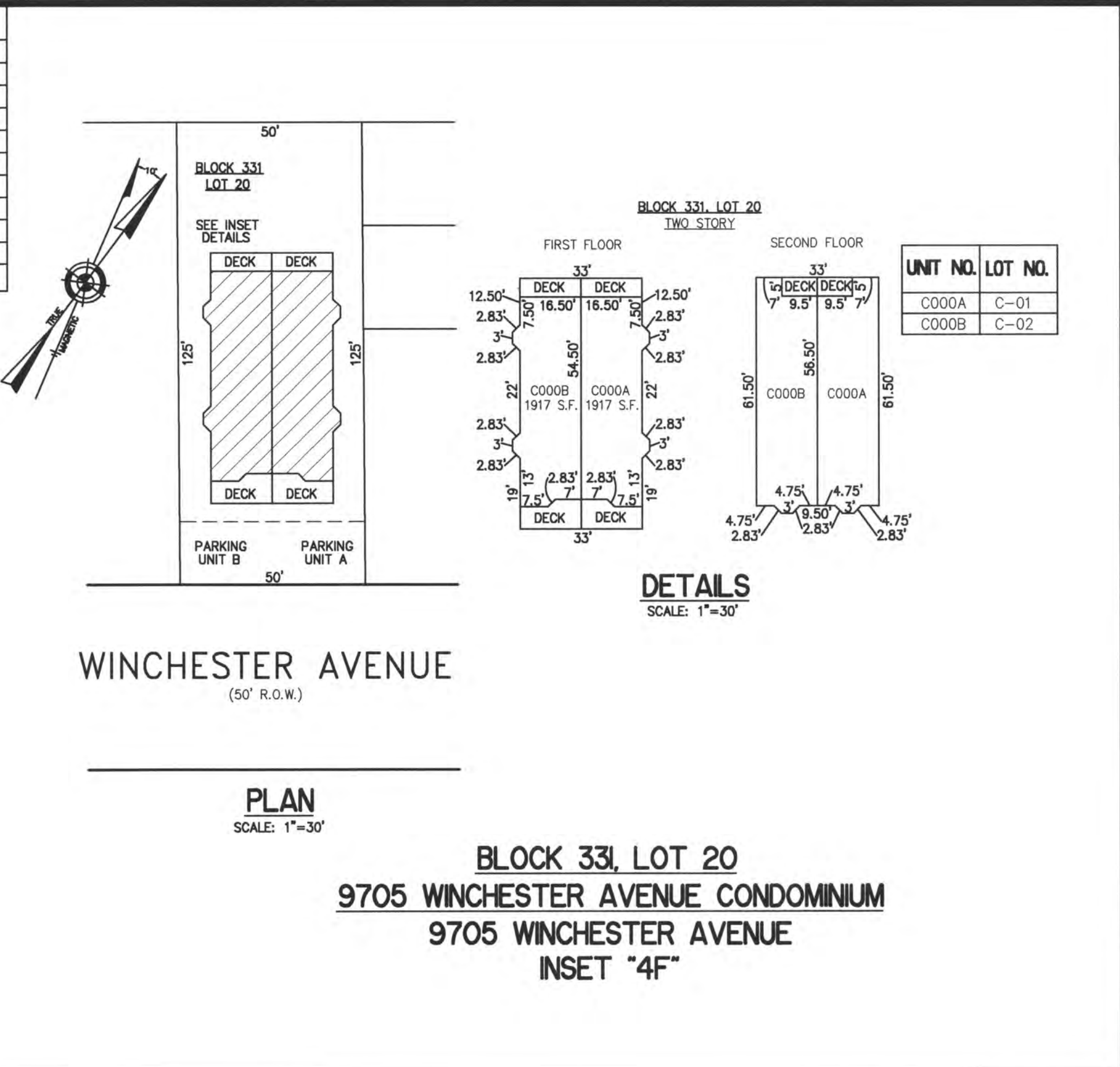


REVISIONS			
6-14-2013	CRAIG F. REMINGTON	23924	
4-24-2014	CRAIG F. REMINGTON	23924	
12-11-2015	CHARLES E. ADAMSON	42627	



**CONDOMINIUM DETAILS AND DIMENSIONS**

- BLOCK 227, LOT 303
- BLOCK 227, LOT 313
- BLOCK 232, LOT 310
- BLOCK 327, LOT 411
- BLOCK 327, LOT 415
- BLOCK 331, LOT 20
- SEE PLATE 5

**TAX MAP**  
**CITY OF MARGATE**  
 ATLANTIC COUNTY NEW JERSEY  
 SCALE: AS NOTED DATE: 3-8-2012

**CRAIG F. REMINGTON LAND SURVEYOR LIC. NO. 23924**

**REMINGTON, VERNICK & WALBERG ENGINEERS**  
 845 N. MAIN STREET, PLEASANTVILLE, N.J. 08232  
 (609) 645-7100, FAX (609) 645-7076  
 WEB SITE ADDRESS: WWW.RVWE.COM

"THIS TAX MAP PLATE HAS BEEN DIGITALLY DRAWN USING COMPUTER-AIDED DRAFTING/DESIGN (CADD) & COORDINATE GEOMETRY (COGO). IT IS BASED ON THE ORIGINAL DIGITALLY DRAWN TAX MAP PLATE BEARING THE OFFICIAL NEW JERSEY DIVISION TAXATION APPROVAL STAMP WITH APPROVAL DATE 6-3-2005 SERIAL NUMBER 846 AND SIGNATURES OF SIGNERS: THOMAS J. REILLY, CHIEF, LOCAL PROPERTY, FIELD ASSISTANCE, SANTO C. DIDONATO, SUPERVISING FIELD REPRESENTATIVE. THE ORIGINAL DIGITALLY DRAWN TAX MAP PLATE WITH THE OFFICIAL APPROVAL STAMP IS ON FILE WITH REMINGTON, VERNICK & WALBERG ENGINEERS."