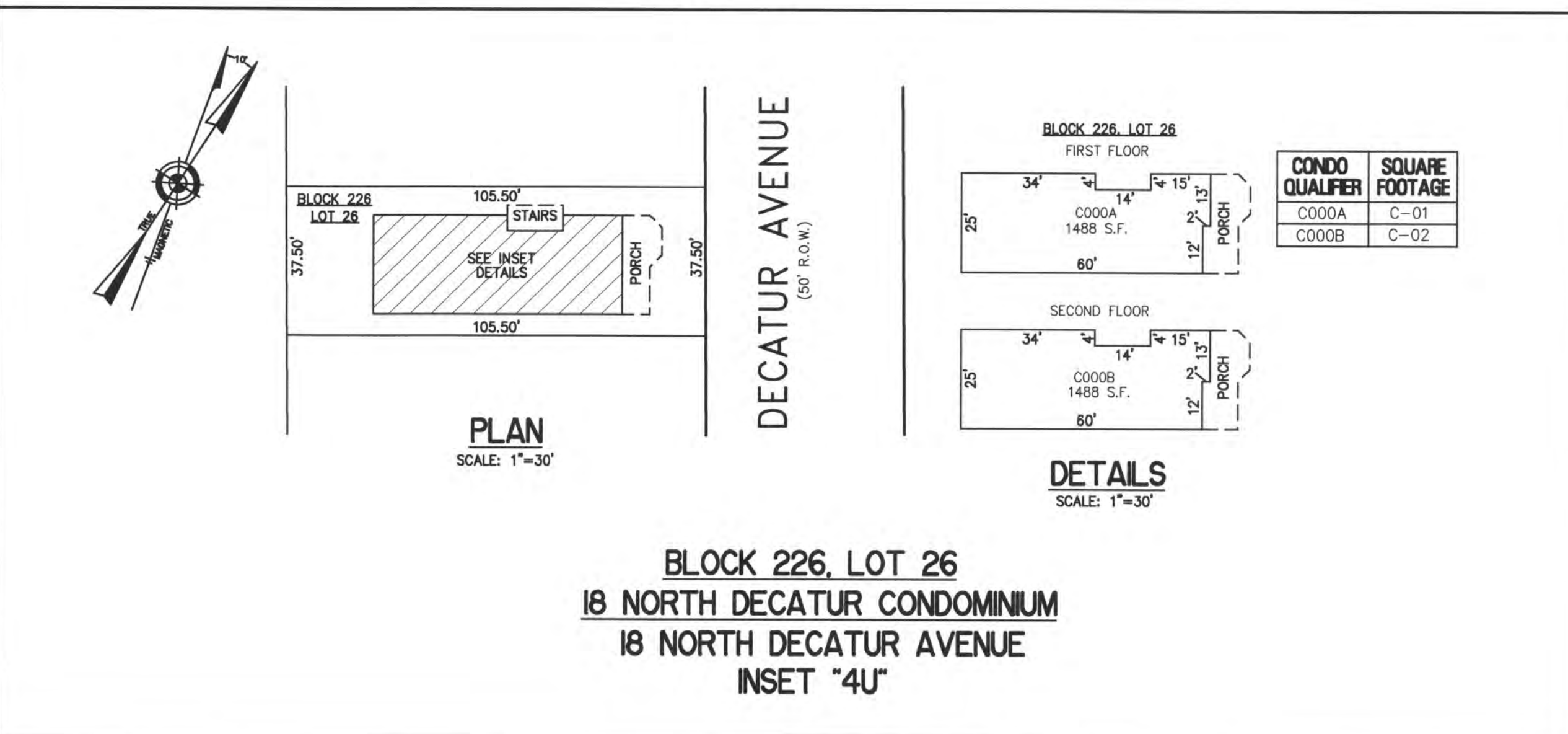
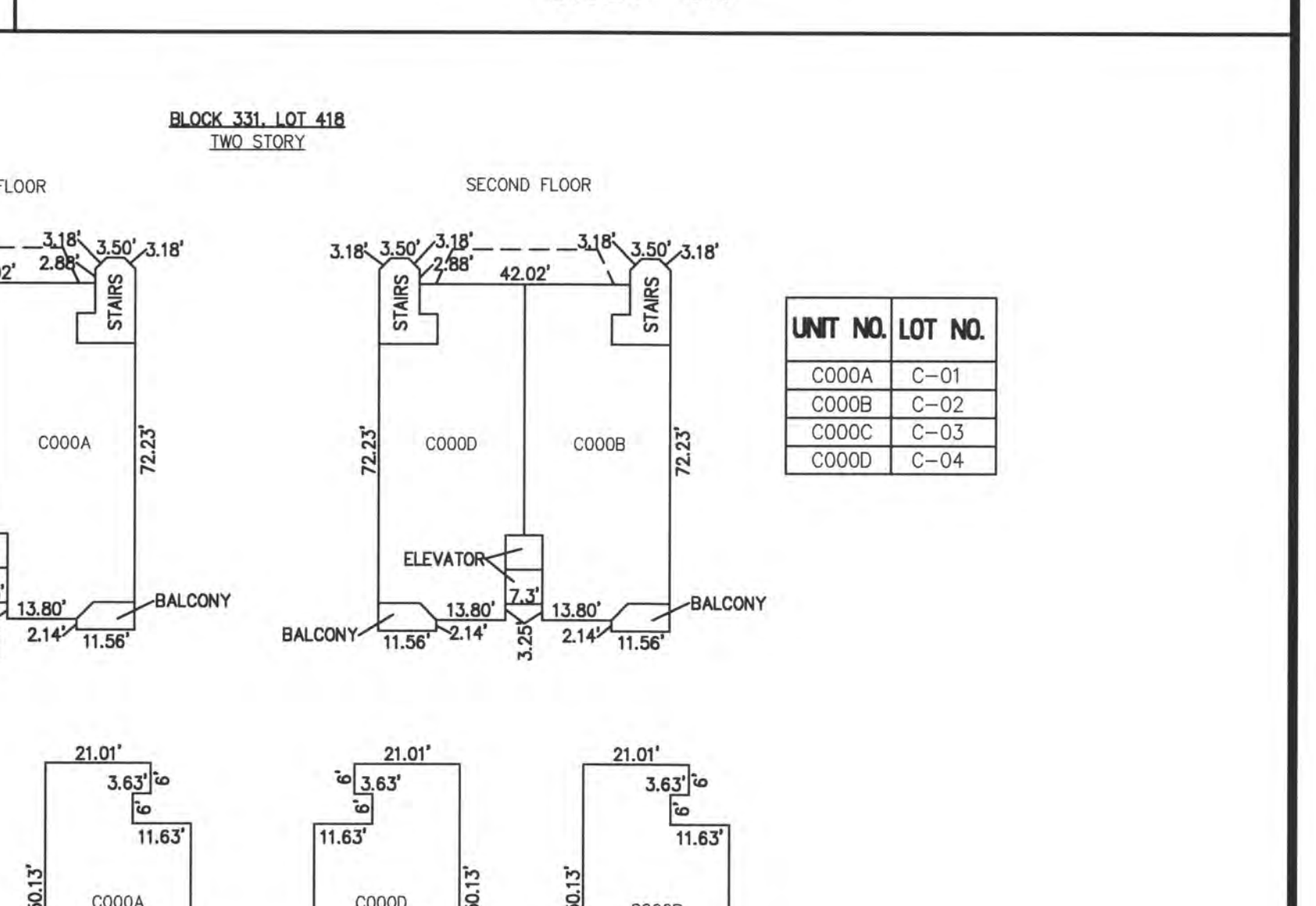
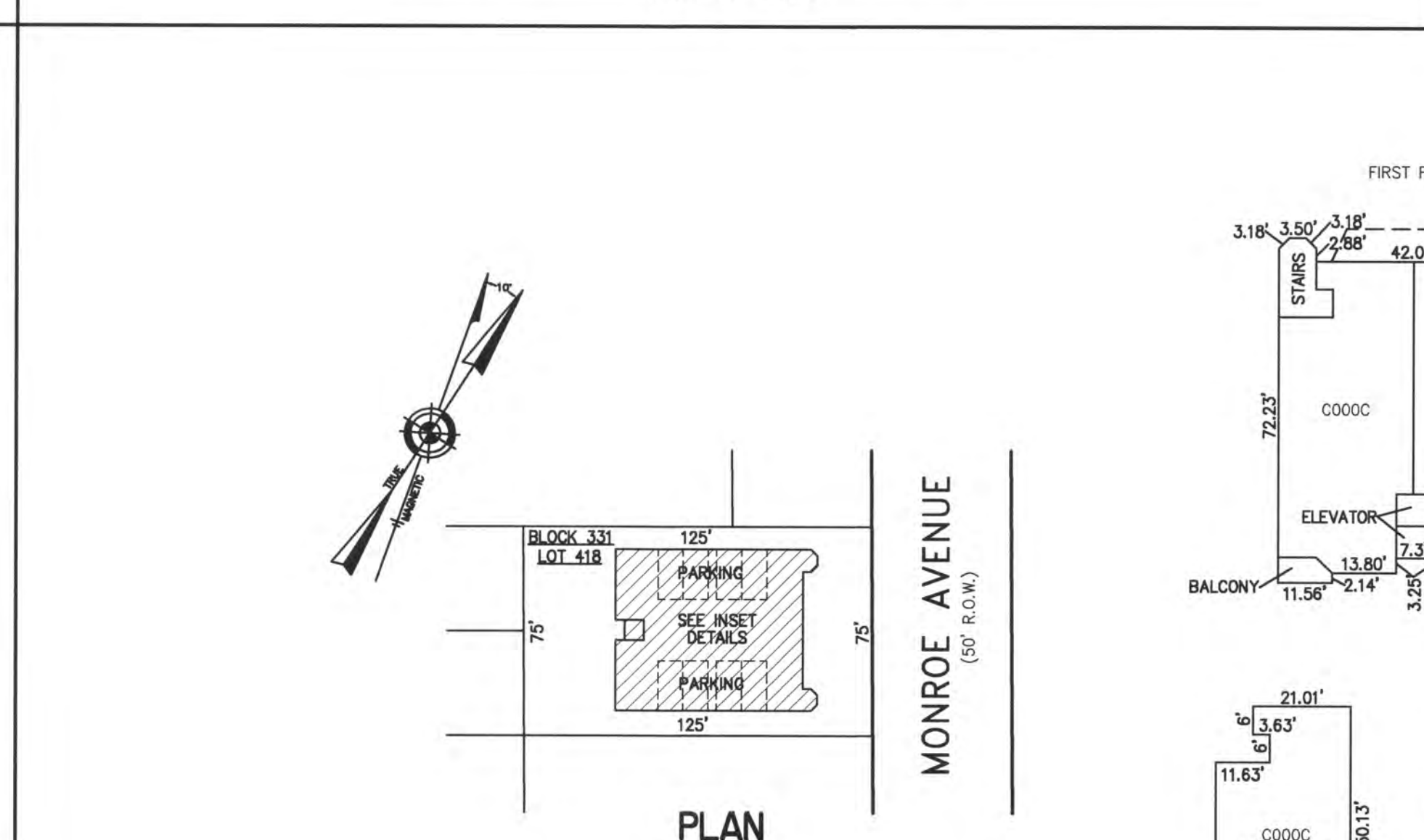
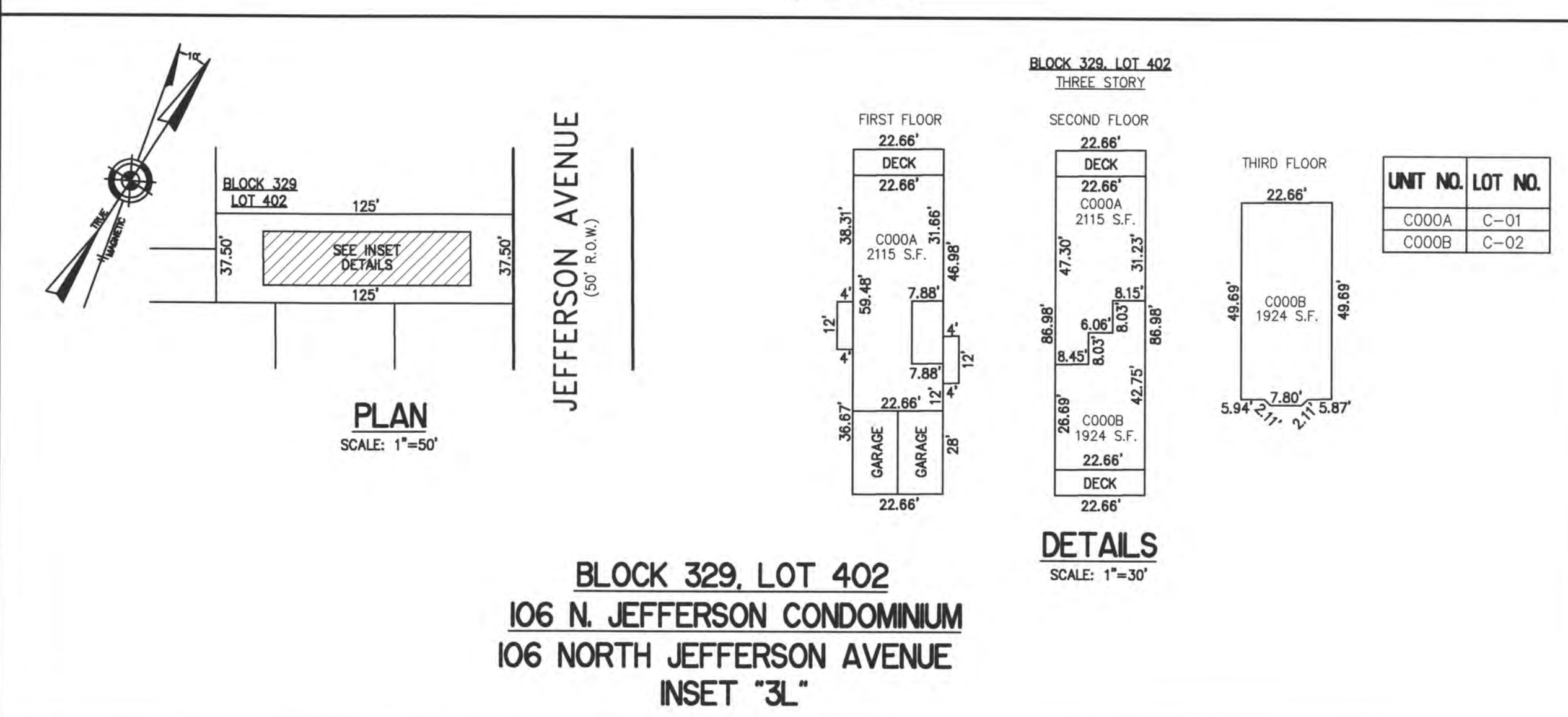
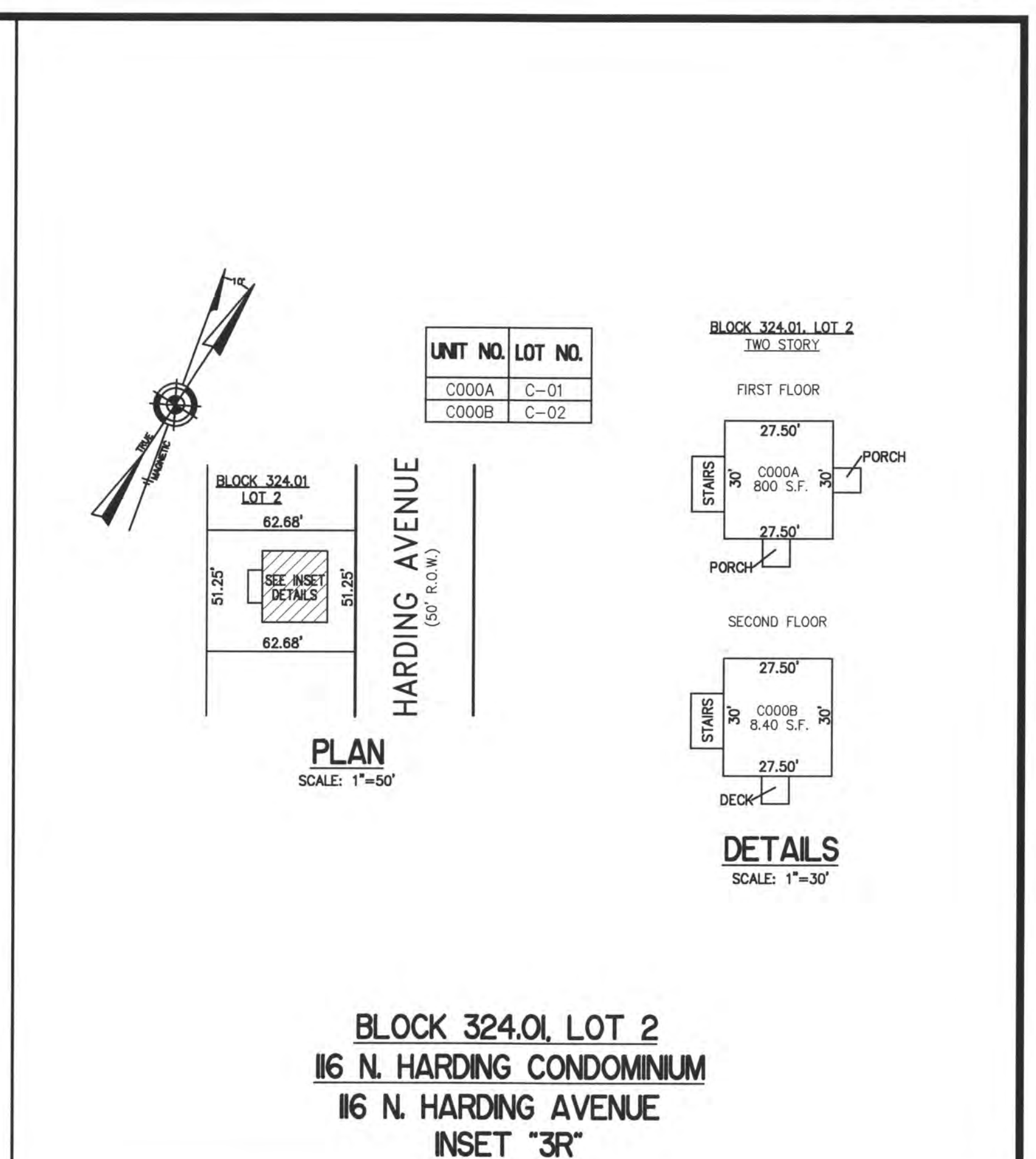
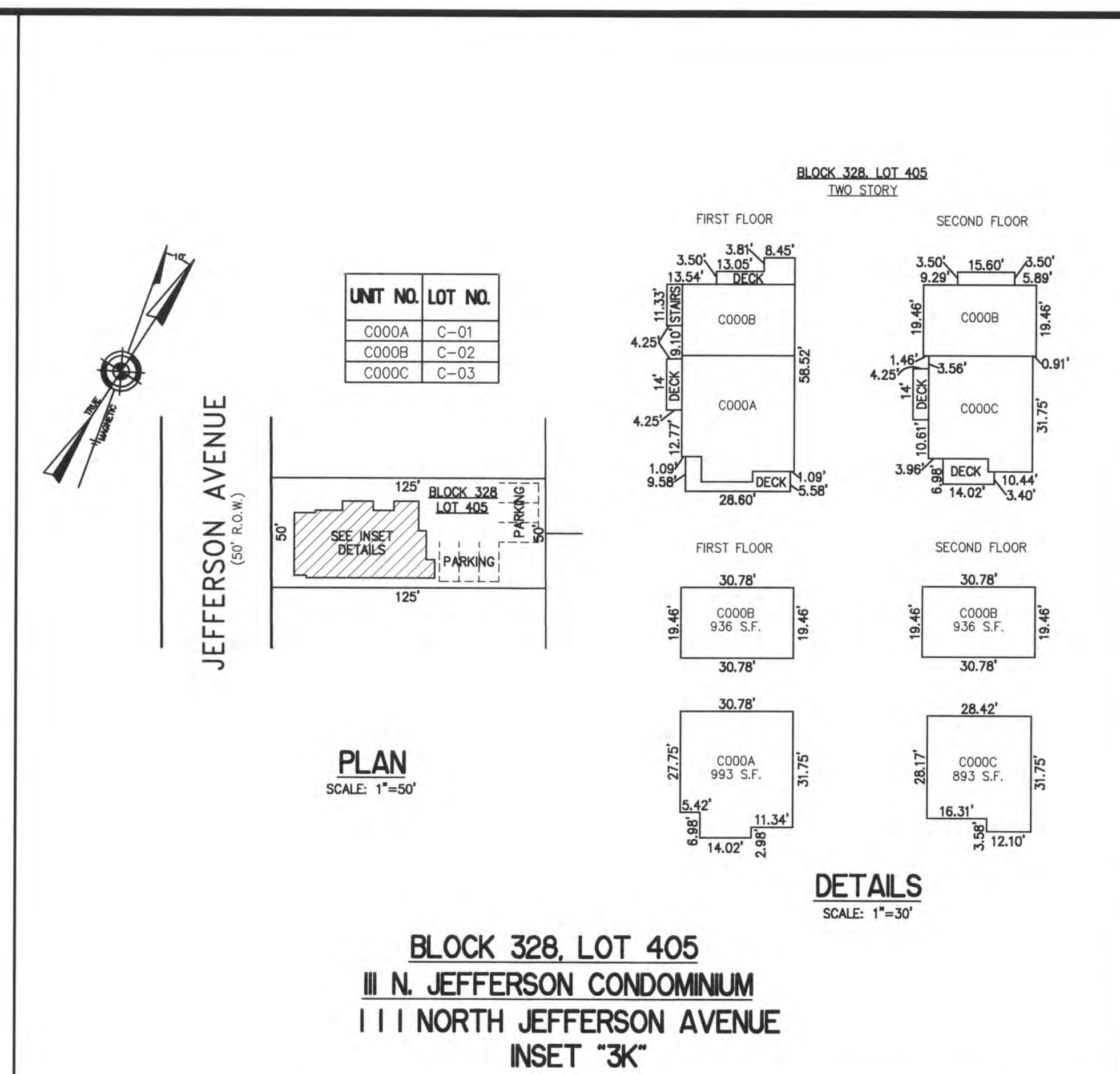
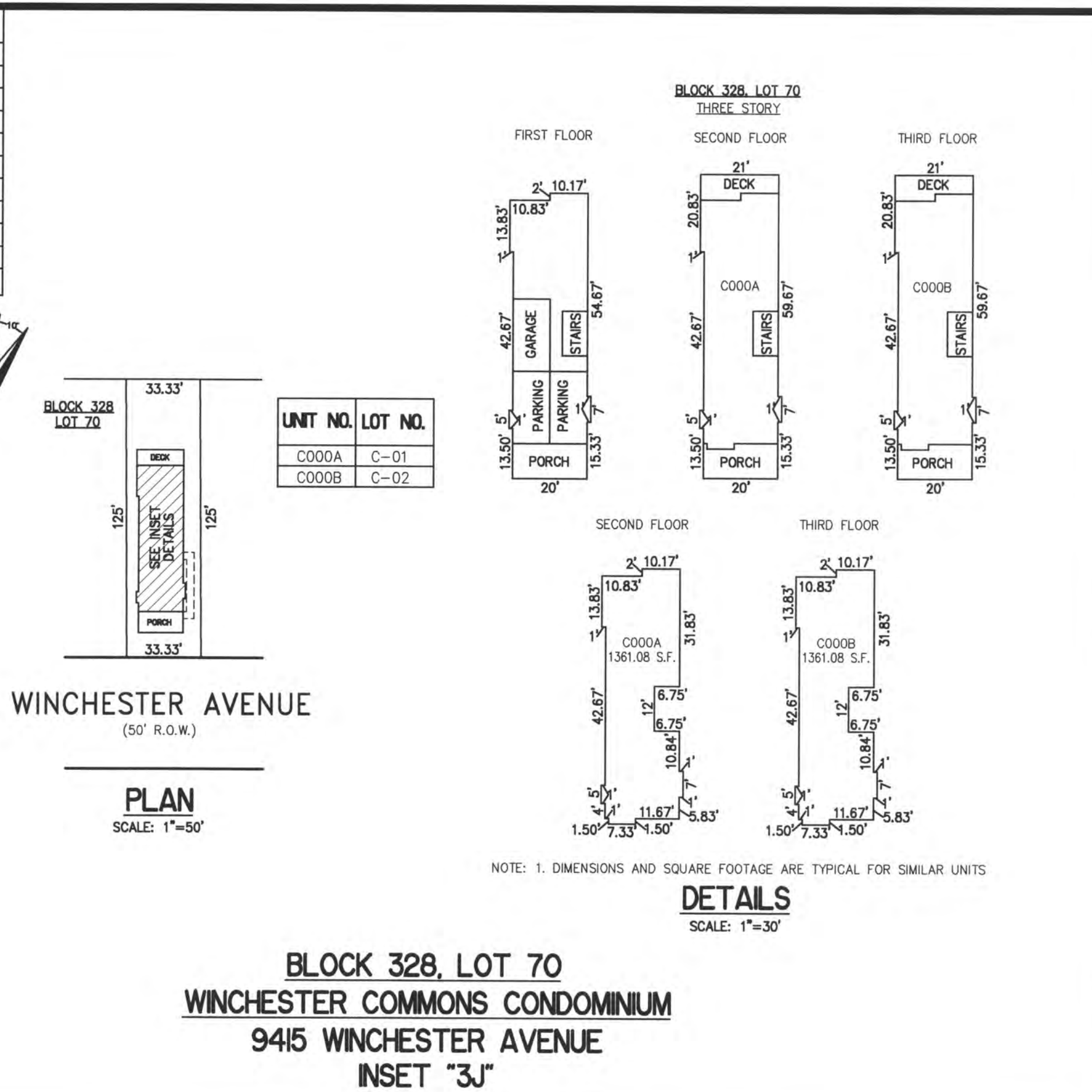


REVISIONS		
8-31-2009	CRAIG F. REMINGTON	23924
1-30-2017	CHARLES E. ADAMSON	42627



**CONDOMINIUM DETAILS AND DIMENSIONS**

BLOCK 226 LOT 26  
 BLOCK 324.01, LOT 2  
 BLOCK 328, LOT 70  
 BLOCK 328, LOT 405  
 BLOCK 329, LOT 402  
 BLOCK 331, LOT 418  
 SEE PLATE 5

"THIS TAX MAP PLATE HAS BEEN DIGITALLY DRAWN USING COMPUTER-AIDED DRAFTING/DESIGN (CADD) & COORDINATE GEOMETRY (COGO). IT IS BASED ON THE ORIGINAL DIGITALLY DRAWN TAX MAP PLATE BEARING THE OFFICIAL NEW JERSEY DIVISION TAXATION APPROVAL STAMP WITH APPROVAL DATE 6-3-2005 SERIAL NUMBER 846 AND SIGNATURES OF SIGNERS' THOMAS J. REILLY, CHIEF, LOCAL PROPERTY, FIELD ASSISTANCE. SANTO C. DIDONATO, SUPERVISING FIELD REPRESENTATIVE. THE ORIGINAL DIGITALLY DRAWN TAX MAP PLATE WITH THE OFFICIAL APPROVAL STAMP IS ON FILE WITH REMINGTON, VERNICK & WALBERG ENGINEERS."

**TAX MAP**  
**CITY OF MARGATE**  
ATLANTIC COUNTY NEW JERSEY  
SCALE: AS NOTED DATE: 1-30-2004  
**CRAIG F. REMINGTON LAND SURVEYOR LIC. NO. 23924**

**REMINGTON, VERNICK & WALBERG ENGINEERS**  
24 GA 28048700  
845 N. MAIN STREET, PLEASANTVILLE, N.J. 08232  
(609) 645-710, FAX (609) 645-7076  
WEB SITE ADDRESS: WWW.RVE.COM