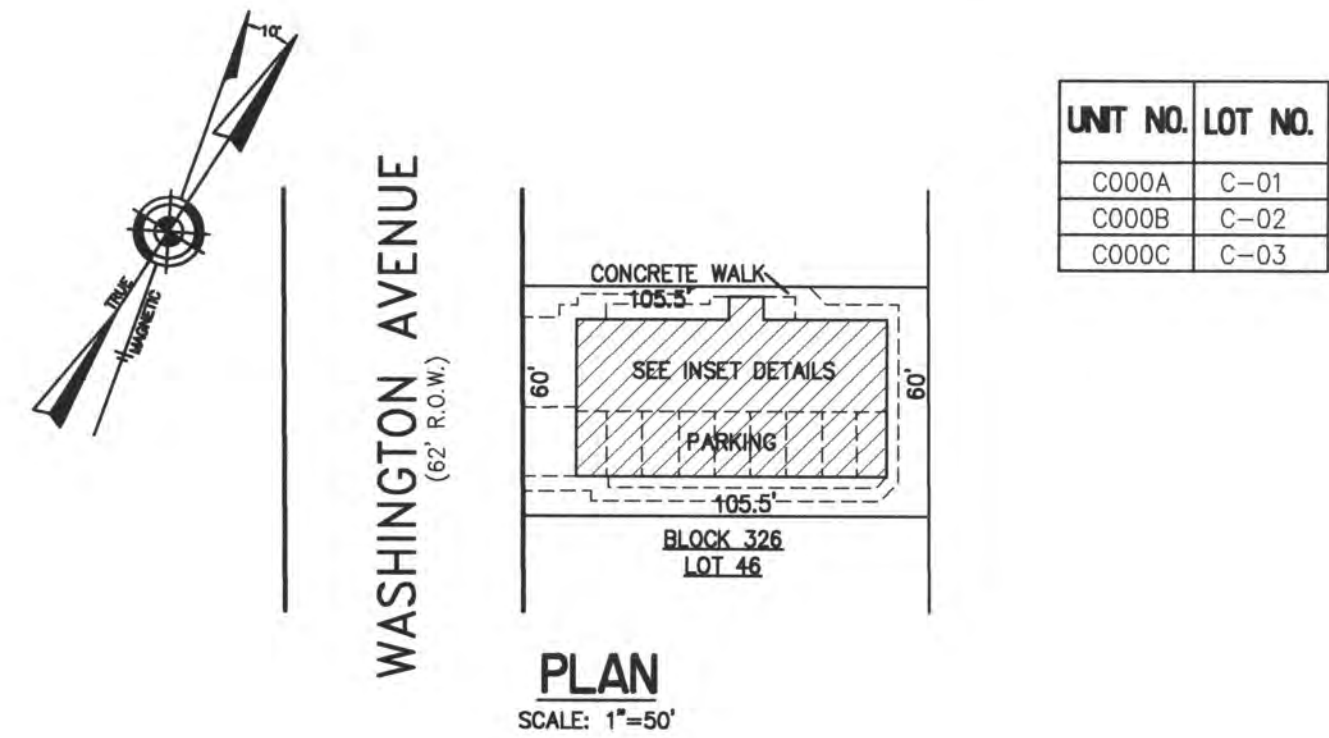
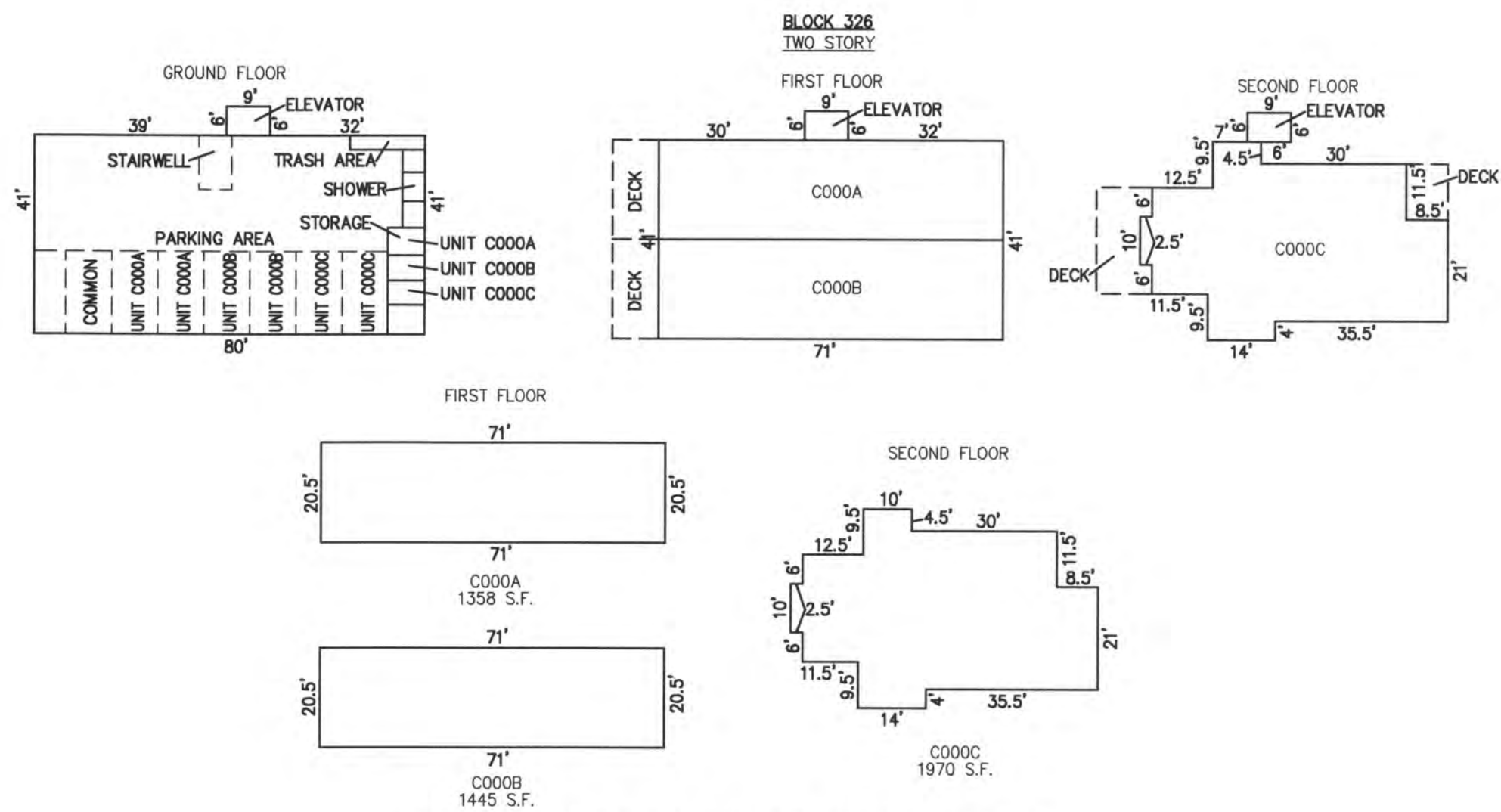


REVISIONS		
4-13-2007	CRAIG F. REMINGTON	23924



UNIT NO.	LOT NO.
C000A	C-01
C000B	C-02
C000C	C-03

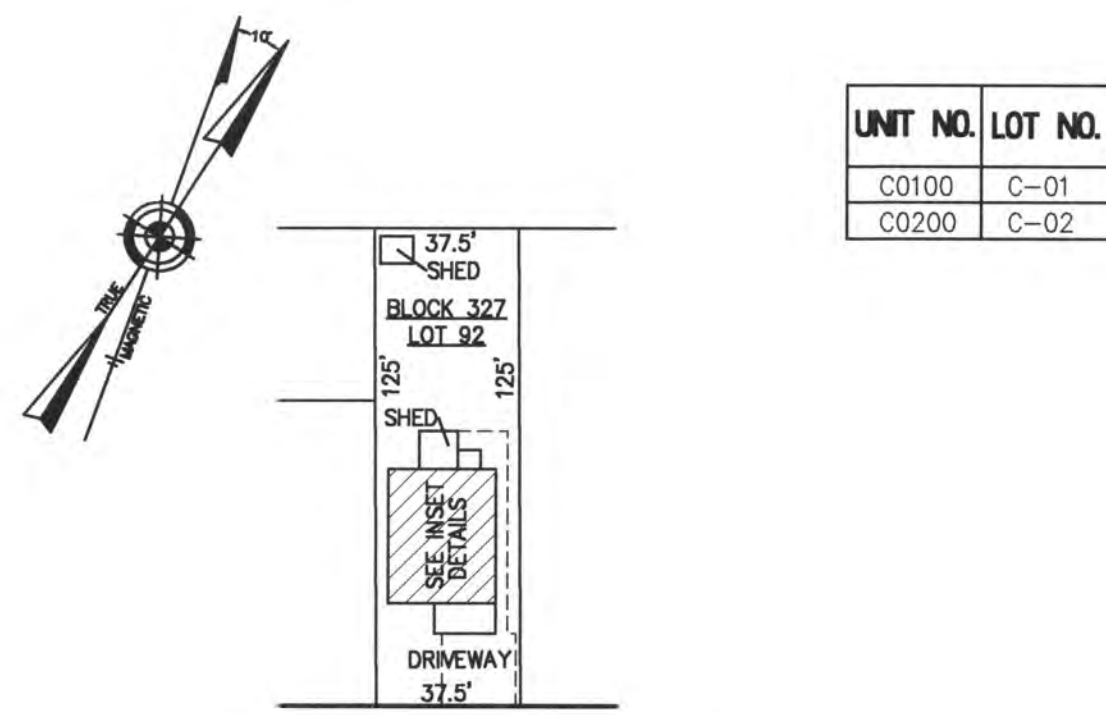
PLAN
SCALE: 1"=50'



NOTE: 1. DIMENSIONS AND SQUARE FOOTAGE ARE TYPICAL FOR SIMILAR UNITS

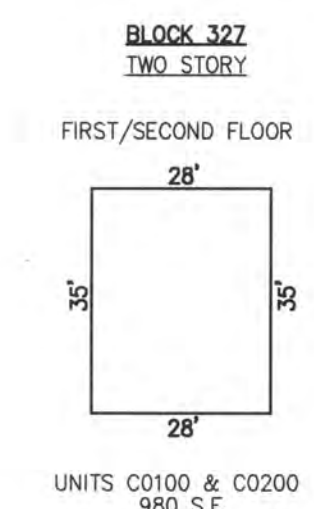
DETAILS
SCALE: 1"=30'

BLOCK 326, LOT 46
111 NORTH WASHINGTON AVENUE CONDOMINIUM
111 NORTH WASHINGTON AVENUE
INSET "I T"



UNIT NO.	LOT NO.
C0100	C-01
C0200	C-02

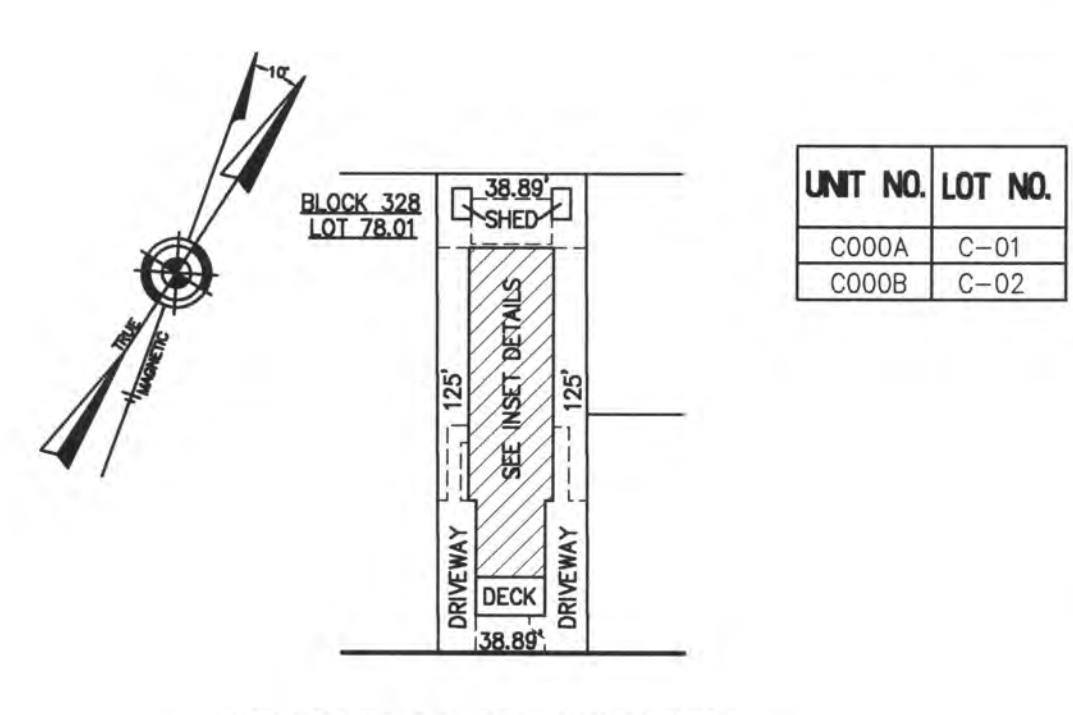
PLAN
SCALE: 1"=50'



NOTE: 1. DIMENSIONS AND SQUARE FOOTAGE ARE TYPICAL FOR SIMILAR UNITS

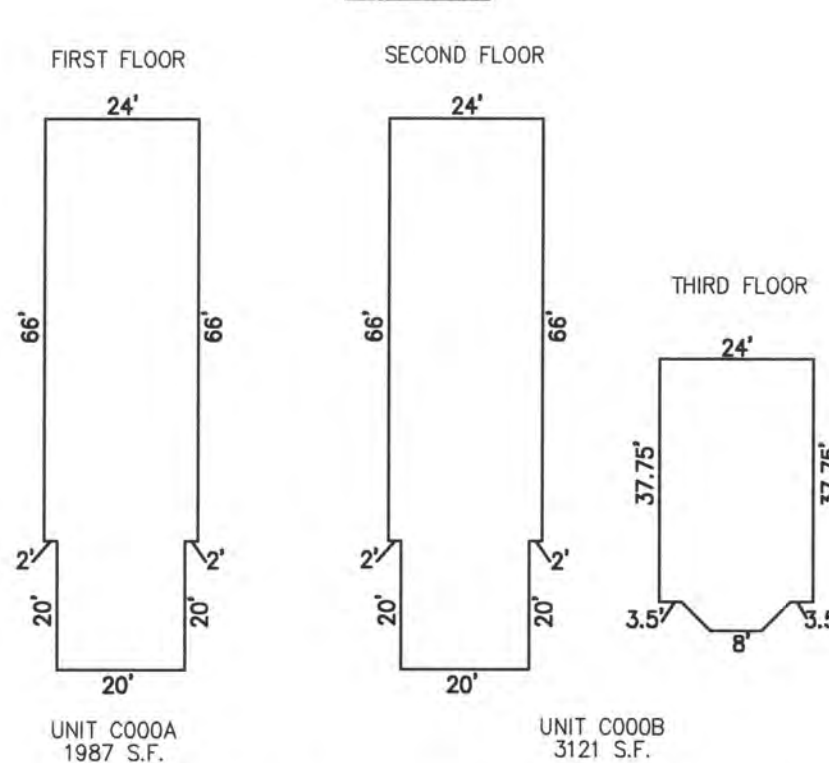
DETAILS
SCALE: 1"=30'

BLOCK 327, LOT 92
9309 WINCHESTER AVENUE CONDOMINIUM
9309 WINCHESTER AVENUE
INSET "I U"



UNIT NO.	LOT NO.
C000A	C-01
C000B	C-02

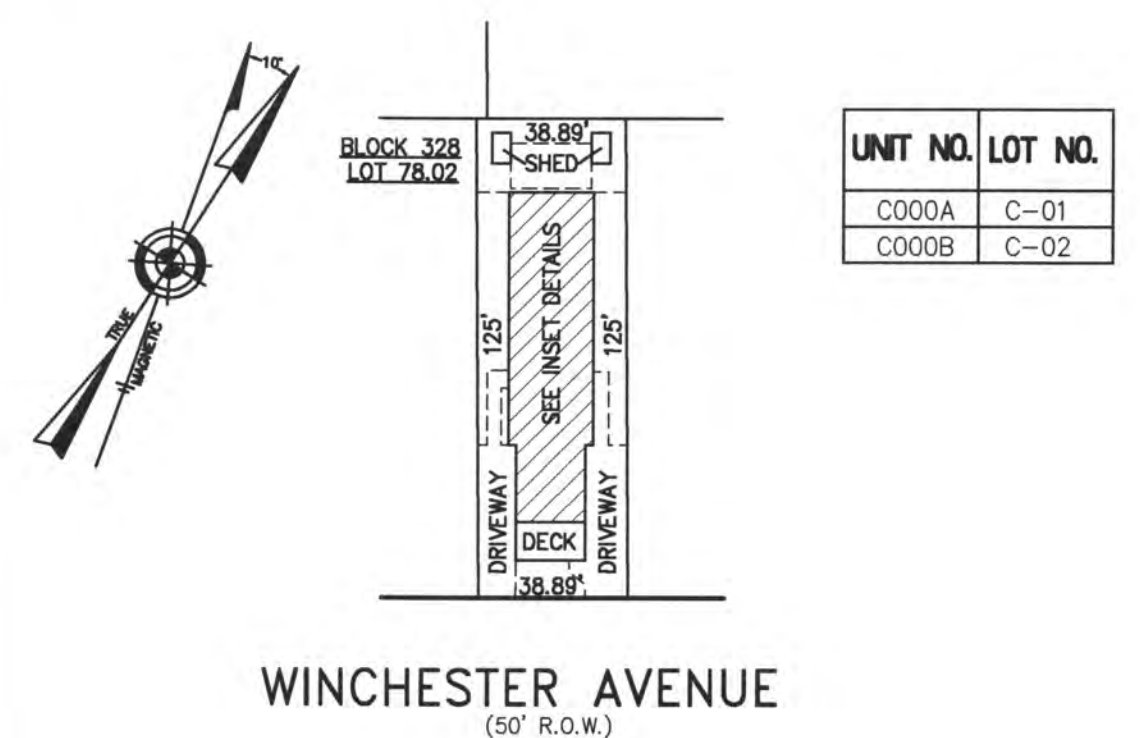
PLAN
SCALE: 1"=50'



NOTE: 1. DIMENSIONS AND SQUARE FOOTAGE ARE TYPICAL FOR SIMILAR UNITS

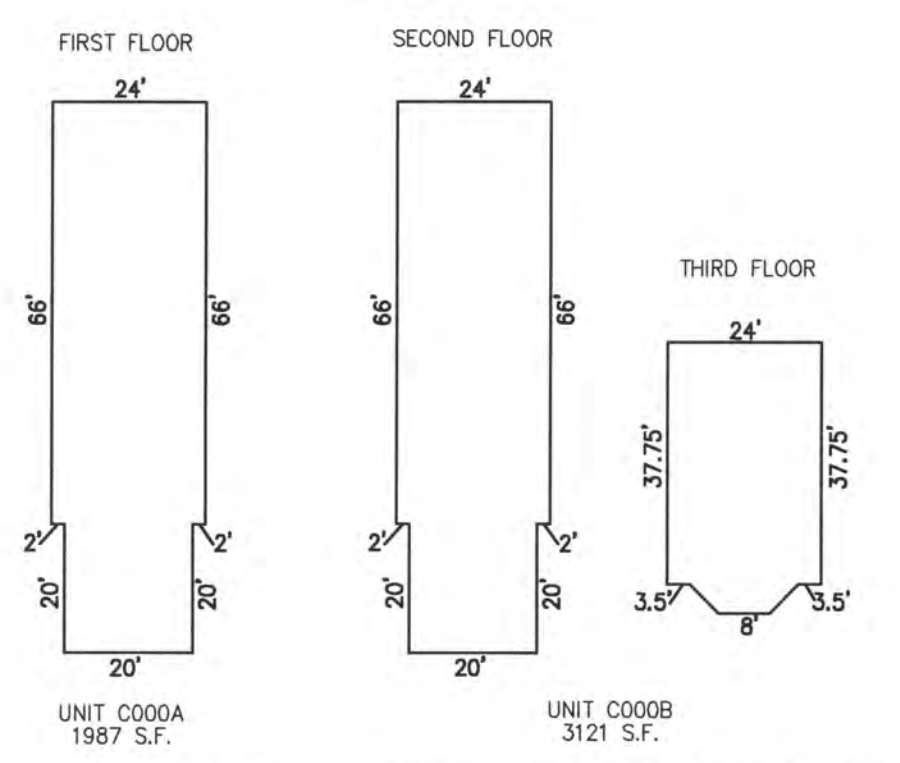
DETAILS
SCALE: 1"=30'

BLOCK 328, LOT 78.01
9409 WINCHESTER AVENUE CONDOMINIUM
9409 WINCHESTER AVENUE
INSET "I W"



UNIT NO.	LOT NO.
C000A	C-01
C000B	C-02

PLAN
SCALE: 1"=50'



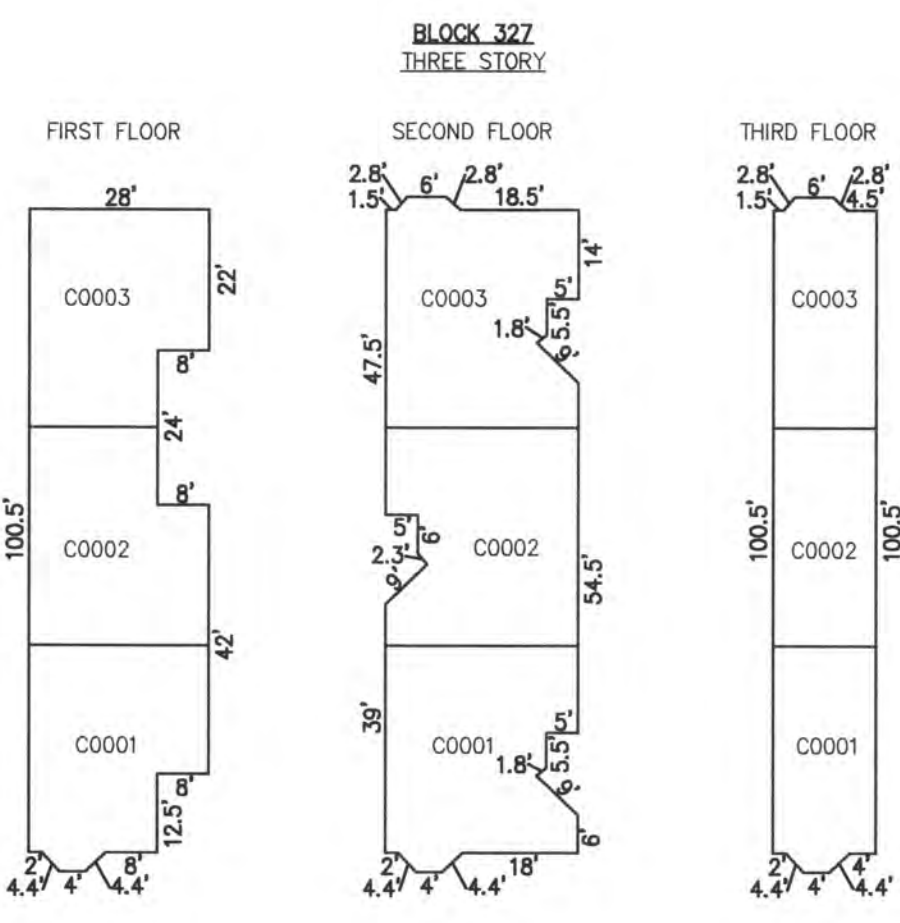
NOTE: 1. DIMENSIONS AND SQUARE FOOTAGE ARE TYPICAL FOR SIMILAR UNITS

DETAILS
SCALE: 1"=30'

BLOCK 328, LOT 78.02
941 WINCHESTER AVENUE CONDOMINIUM
941 WINCHESTER AVENUE
INSET "I X"

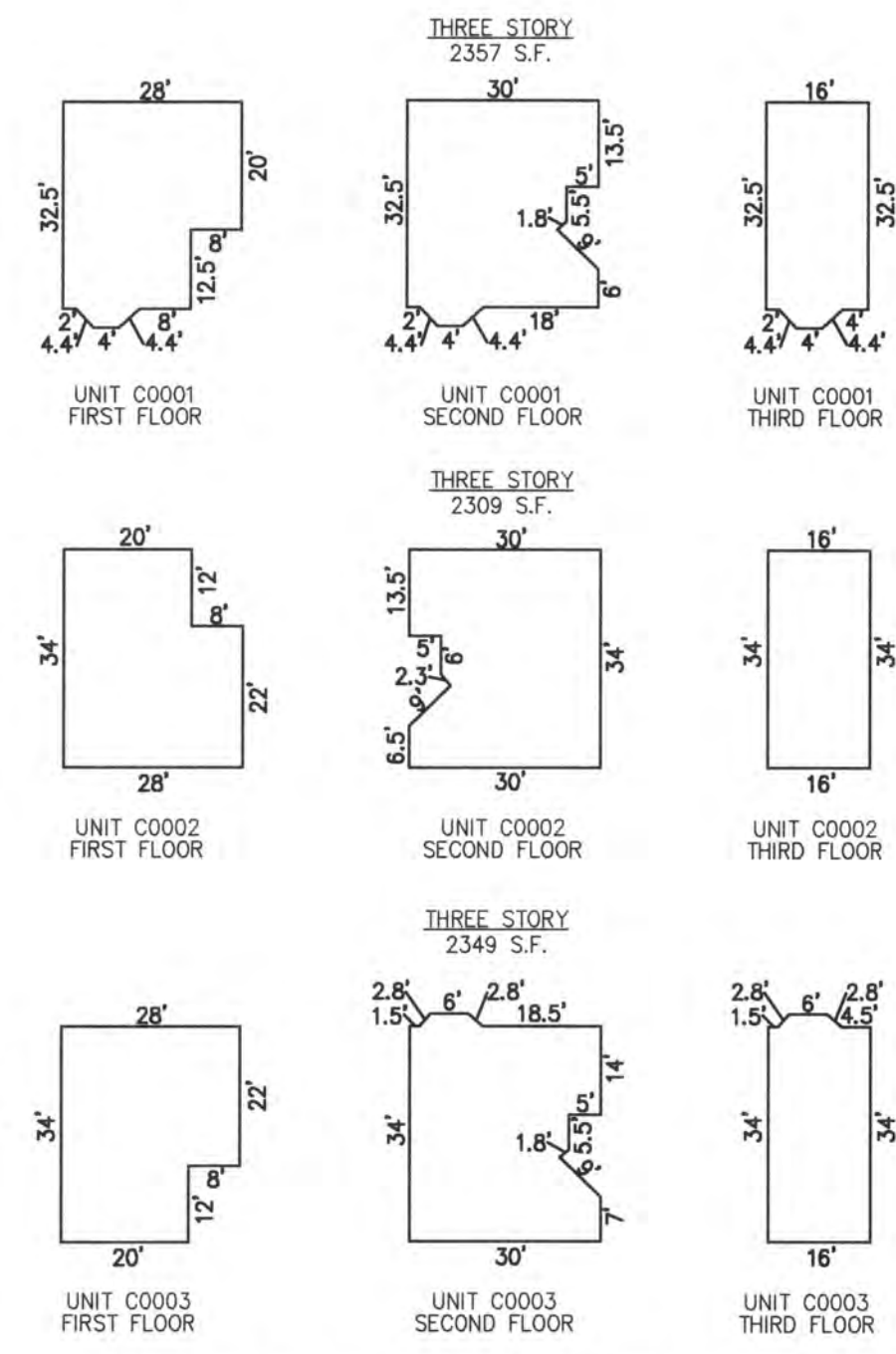


UNIT NO.	LOT NO.
C0001	C-01
C0002	C-02
C0003	C-03



DETAILS
SCALE: 1"=30'

BLOCK 327, LOT 102
THE PALMS CONDOMINIUM
100, 102 & 102A NORTH WASHINGTON AVENUE
INSET "I V"



NOTE: 1. DIMENSIONS AND SQUARE FOOTAGE ARE TYPICAL FOR SIMILAR UNITS

CONDOMINIUM DETAILS AND DIMENSIONS
BLOCK 326, LOT 46
BLOCK 327, LOT 92
BLOCK 328, LOT 78.01
BLOCK 328, LOT 78.02
SEE PLATE 5

"THIS TAX MAP PLATE HAS BEEN DIGITALLY DRAWN USING COMPUTER-AIDED DRAFTING/DESIGN (CAD) & COORDINATE GEOMETRY (COGO). IT IS BASED ON THE ORIGINAL DIGITALLY DRAWN TAX MAP PLATE BEARING THE OFFICIAL NEW JERSEY DIVISION TAXATION APPROVAL STAMP WITH APPROVAL DATE 6-5-2005 SERIAL NUMBER 846 AND SIGNATURES OF SIGNERS' THOMAS J. REILLY, CHIEF, LOCAL PROPERTY, FIELD ASSISTANCE; SANTO C. DIDONATO, SUPERVISING FIELD REPRESENTATIVE. THE ORIGINAL DIGITALLY DRAWN TAX MAP PLATE WITH THE OFFICIAL APPROVAL STAMP IS ON FILE WITH REMINGTON, VERNICK & WALBERG ENGINEERS."

TAX MAP
CITY OF MARGATE

ATLANTIC COUNTY NEW JERSEY
SCALE: AS NOTED DATE: 1-30-2004

CRAIG F. REMINGTON LAND SURVEYOR LIC. NO. 23924



24 CA 28048700
REMINGTON, VERNICK & WALBERG ENGINEERS
845 N. MAIN STREET, PLEASANTVILLE, NJ 08232
(609) 648-7100, FAX (609) 648-7076
WEB SITE ADDRESS: WWW.RVWE.COM