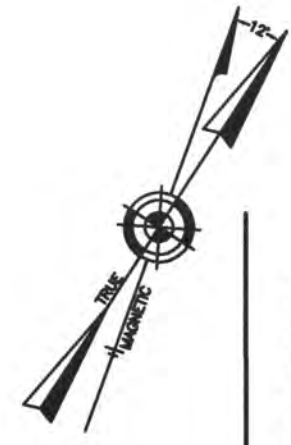
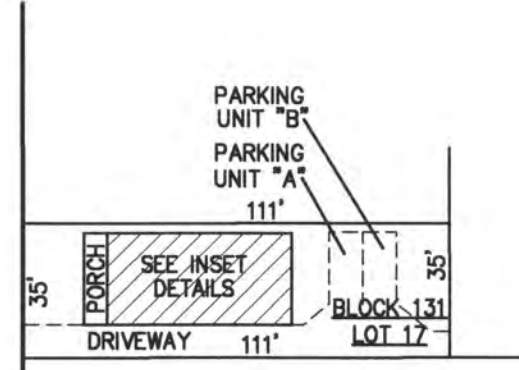


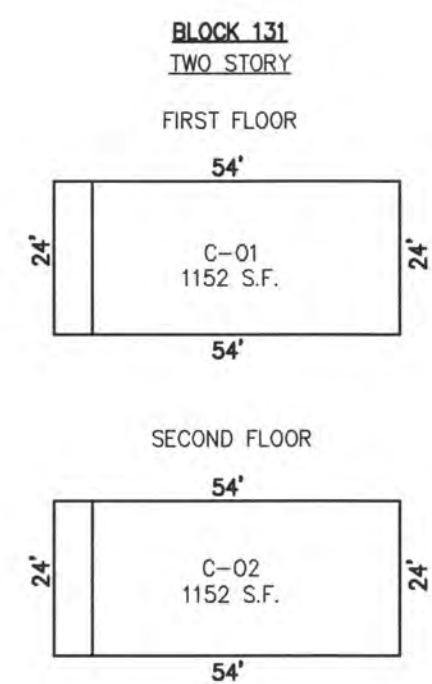
REVISIONS		
4-13-2007	CRAIG F. REMINGTON	23924



WASHINGTON AVENUE



PLAN  
SCALE: 1"=50'



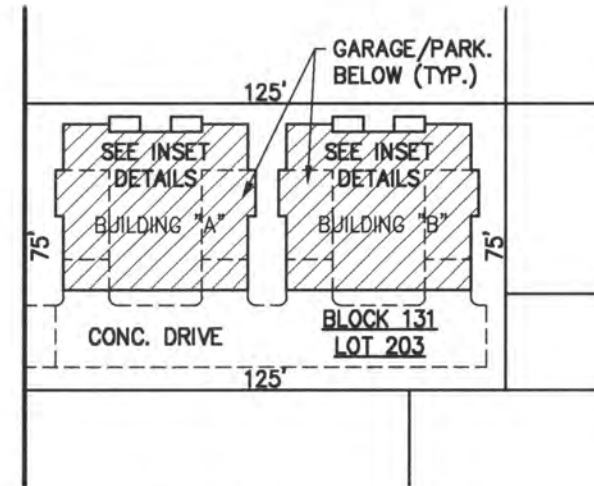
DETAILS  
SCALE: 1"=30'

**BLOCK 126, LOT 108**  
**15 SOUTH WASHINGTON AVENUE CONDOMINIUM**  
**15 SOUTH WASHINGTON AVENUE**  
**INSET "XXXX"**

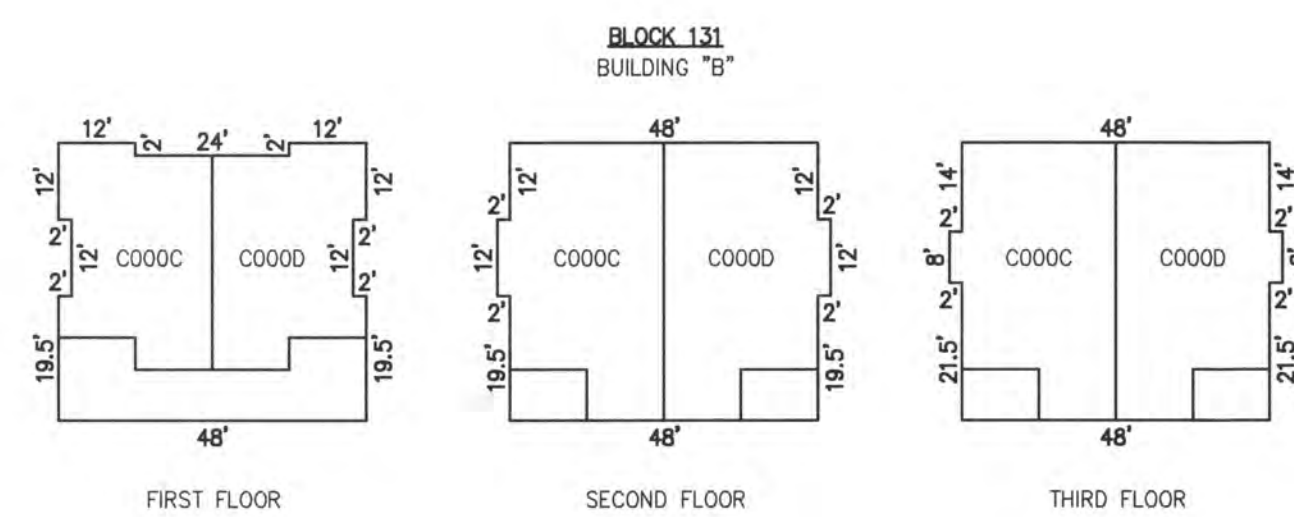
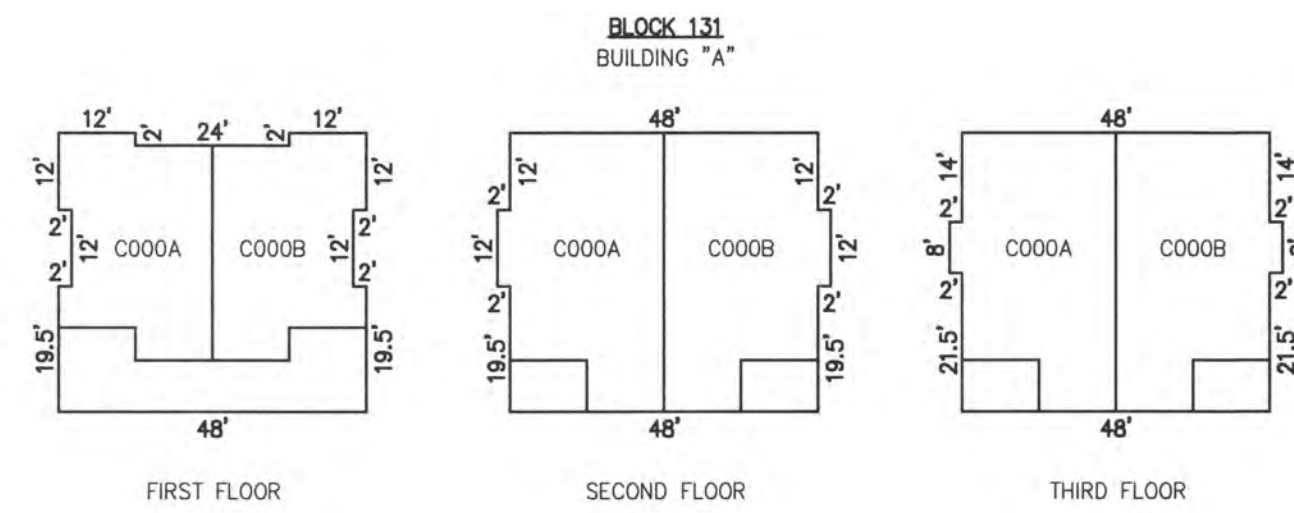
UNIT NO.	LOT NO.
C-01	C-01
C-02	C-02



COOLIDGE AVENUE  
(50' R.O.W.)

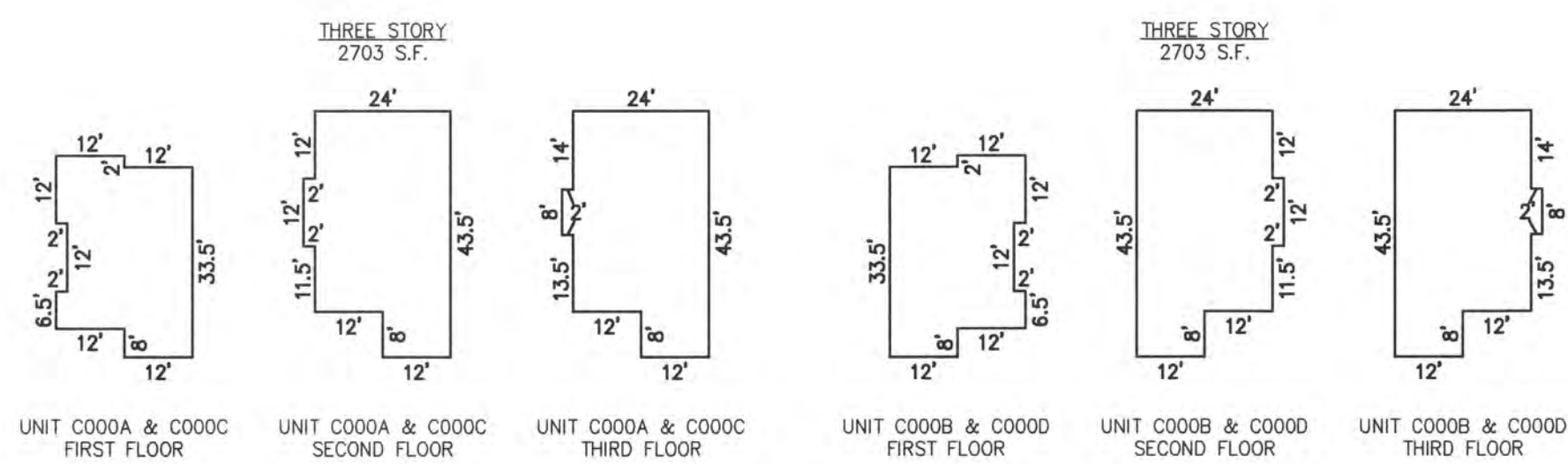


PLAN  
SCALE: 1"=50'



DETAILS  
SCALE: 1"=30'

UNIT NO.	LOT NO.
C000A	C-01
C000B	C-02
C000C	C-03
C000D	C-04

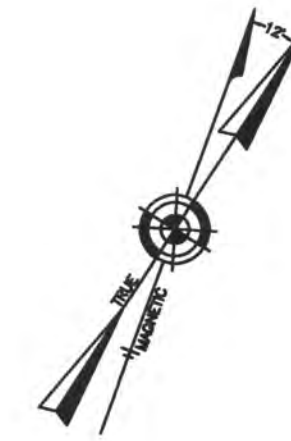


NOTE: 1. DIMENSIONS AND SQUARE FOOTAGE ARE TYPICAL FOR ALL FLOORS  
2. DIMENSIONS AND SQUARE FOOTAGE ARE TYPICAL FOR SIMILAR UNITS

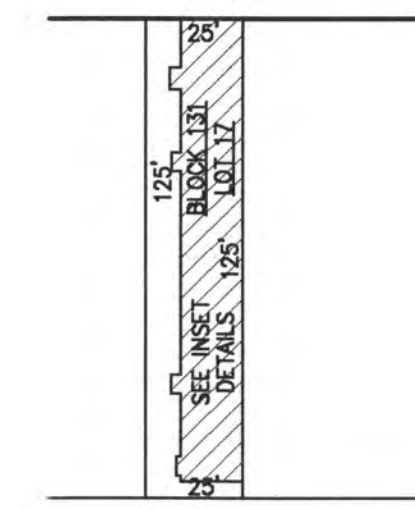
DETAILS  
SCALE: 1"=30'

**BLOCK 131, LOT 203**  
**COLONNADE CONDOMINIUM**  
**23 SOUTH COOLIDGE AVENUE**  
**INSET "VV"**

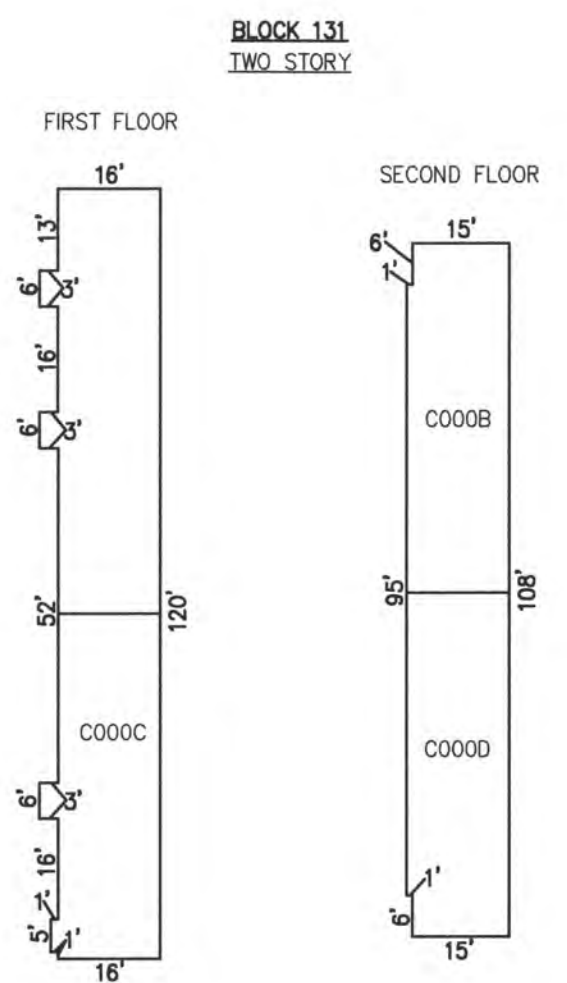
CONDOMINIUM DETAILS AND DIMENSIONS  
BLOCK 126, LOT 108  
BLOCK 131, LOT 17  
BLOCK 131, LOT 203  
SEE PLATE 4



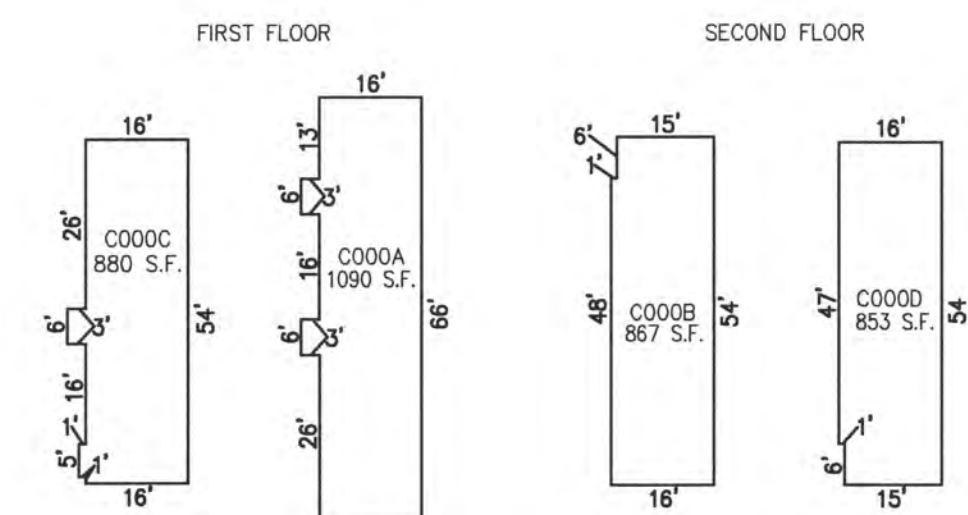
VENTNOR AVENUE  
(COUNTY ROUTE NO. 629)  
(80' R.O.W.)



PLAN  
SCALE: 1"=50'



UNIT NO.	LOT NO.
C000A	C-01
C000B	C-02
C000C	C-03
C000D	C-04



DETAILS  
SCALE: 1"=30'

**BLOCK 131, LOT 17**  
**SAM'S CONDOMINIUM ASSOCIATION**  
**9706 VENTNOR AVENUE**  
**INSET "WWW"**

"THIS TAX MAP PLATE HAS BEEN DIGITALLY DRAWN USING COMPUTER-AIDED DRAFTING/DESIGN (CADD) & COORDINATE GEOMETRY (COGO). IT IS BASED ON THE ORIGINAL DIGITALLY DRAWN TAX MAP PLATE BEARING THE OFFICIAL NEW JERSEY DIVISION TAXATION APPROVAL STAMP WITH APPROVAL DATE 6-3-2005 SERIAL NUMBER 846 AND SIGNATURES OF SIGNERS' THOMAS J. REILLY, CHIEF, LOCAL PROPERTY, FIELD ASSISTANCE, SANTO C. DIDONATO, SUPERVISING FIELD REPRESENTATIVE. THE ORIGINAL DIGITALLY DRAWN TAX MAP PLATE WITH THE OFFICIAL APPROVAL STAMP IS ON FILE WITH REMINGTON, VERNICK & WALBERG ENGINEERS."

**TAX MAP**  
**CITY OF MARGATE**

ATLANTIC COUNTY NEW JERSEY  
SCALE: AS NOTED DATE: 1-30-2004

CRAIG F. REMINGTON LAND SURVEYOR LIC. NO. 23924



REMINGTON, VERNICK & WALBERG ENGINEERS  
24 GA 28048700  
845 N. MAIN STREET, PLEASANTVILLE, NJ 08232  
(609) 645-7100, FAX (609) 645-7076  
WEB SITE ADDRESS: WWW.RVE.COM