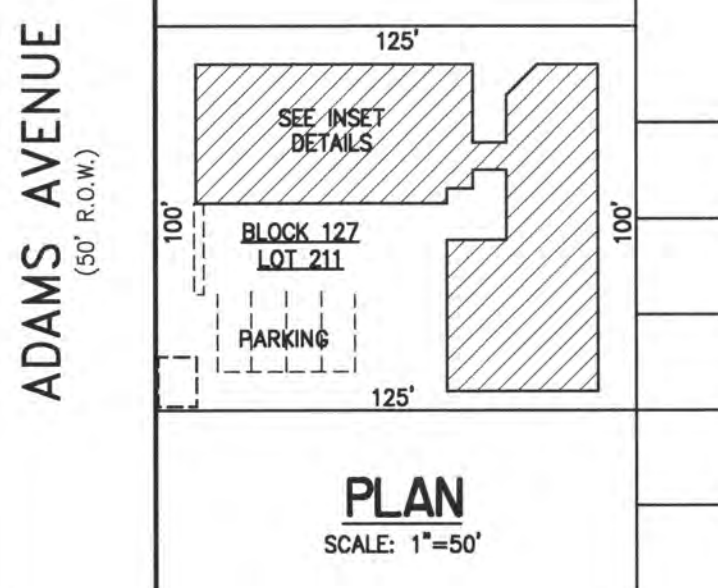
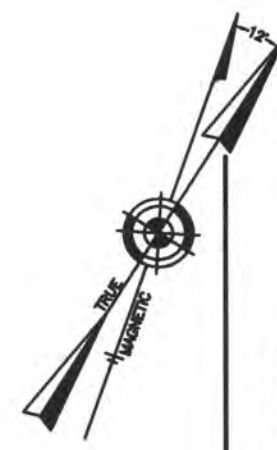
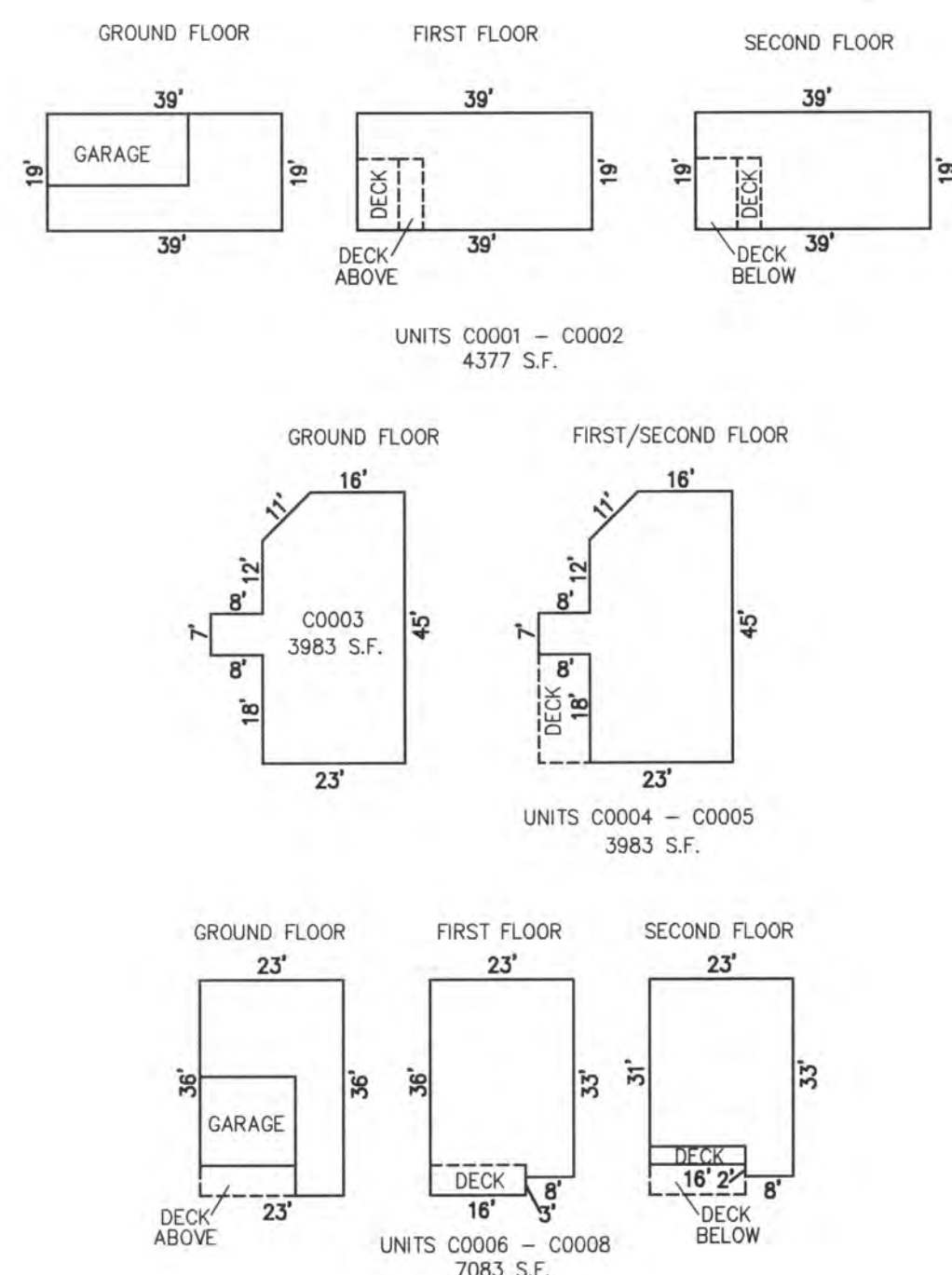


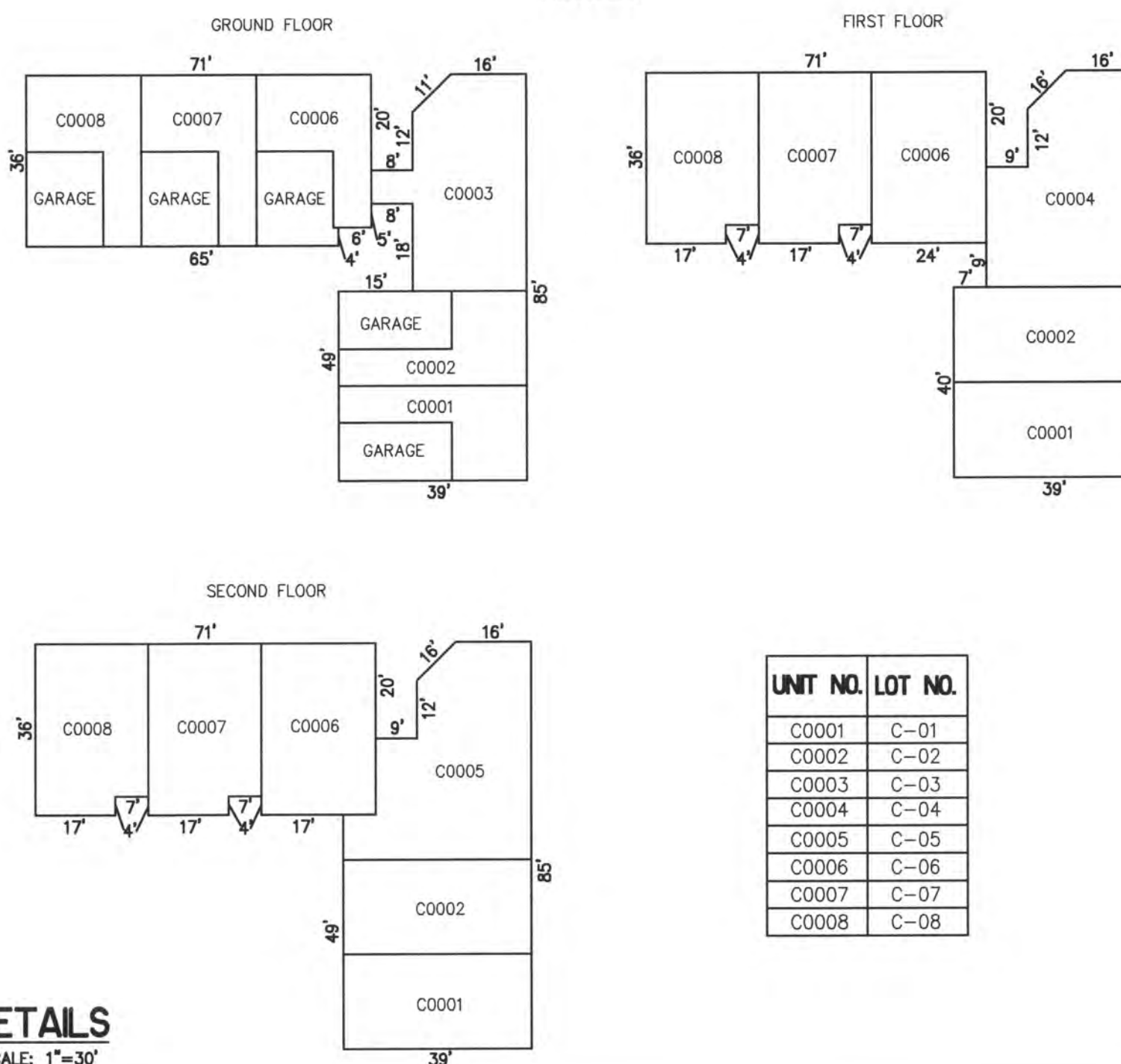
REVISIONS



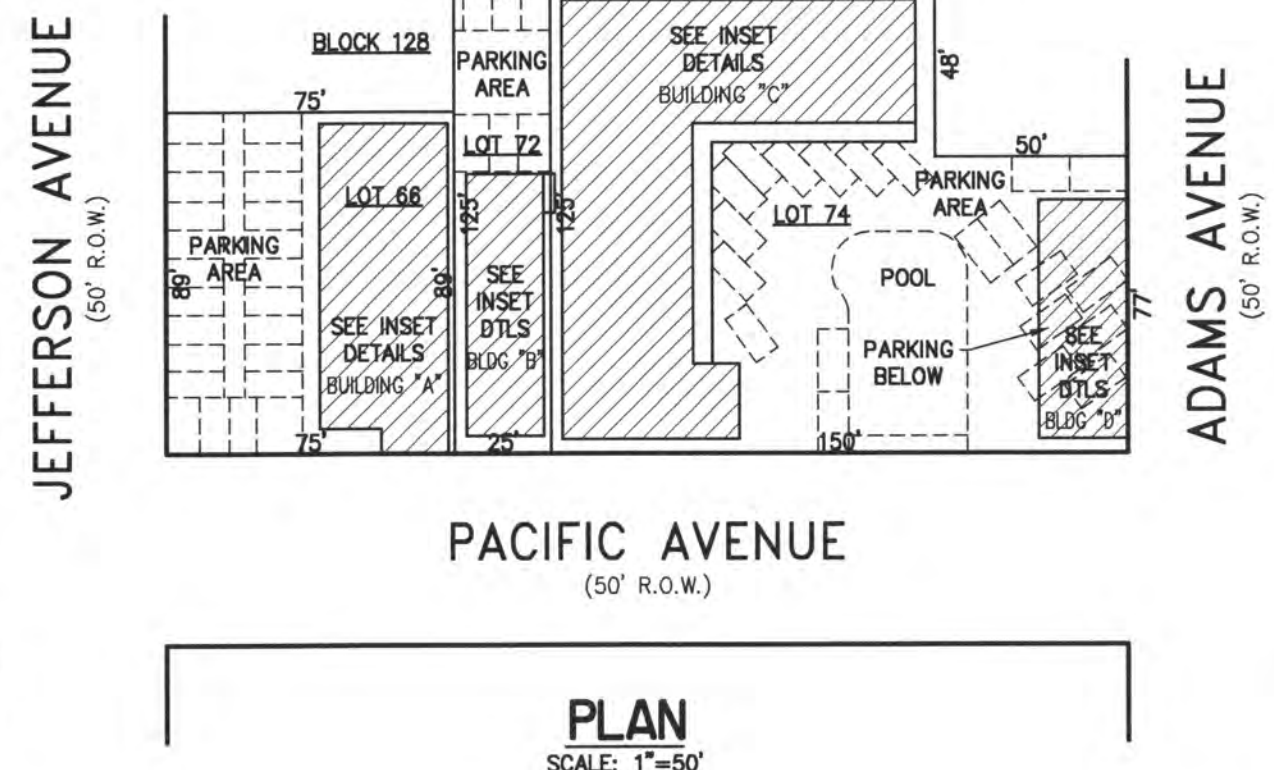
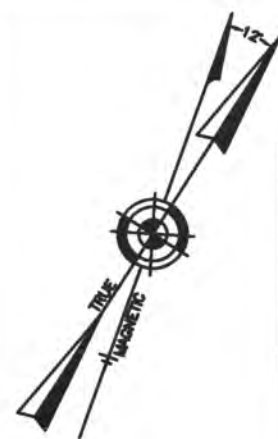
**BLOCK 127, LOT 21
ADAMS TERRACE CONDOMINIUM
II SOUTH ADAMS AVENUE
INSET "EE"**



**DETAILS
SCALE: 1"=30'**

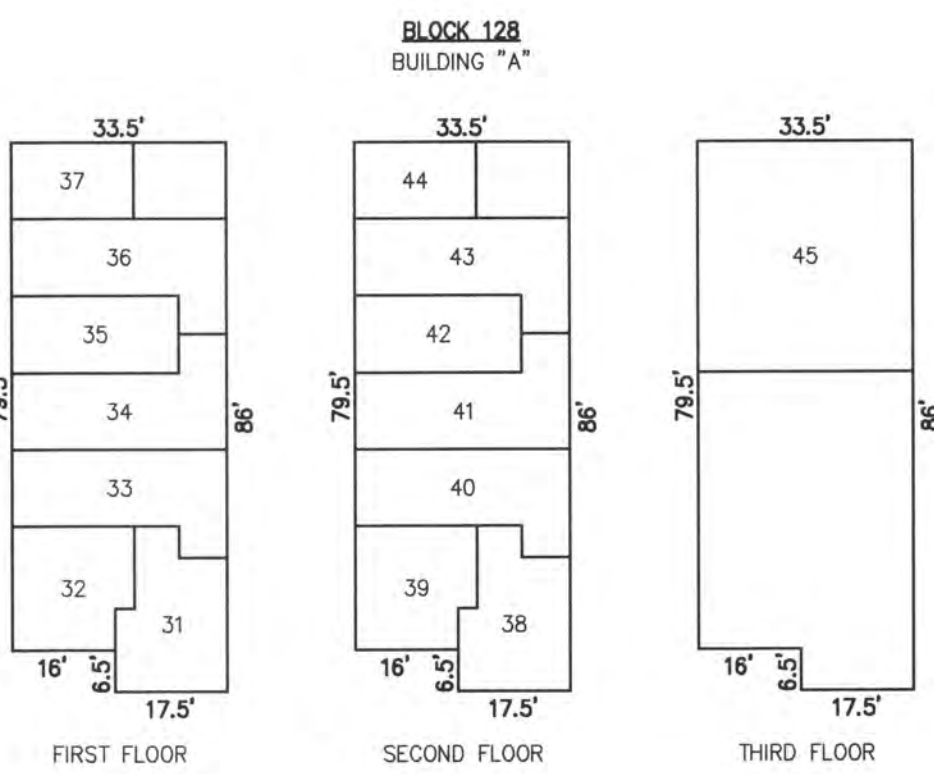


UNIT NO.	LOT NO.
C0001	C-01
C0002	C-02
C0003	C-03
C0004	C-04
C0005	C-05
C0006	C-06
C0007	C-07
C0008	C-08

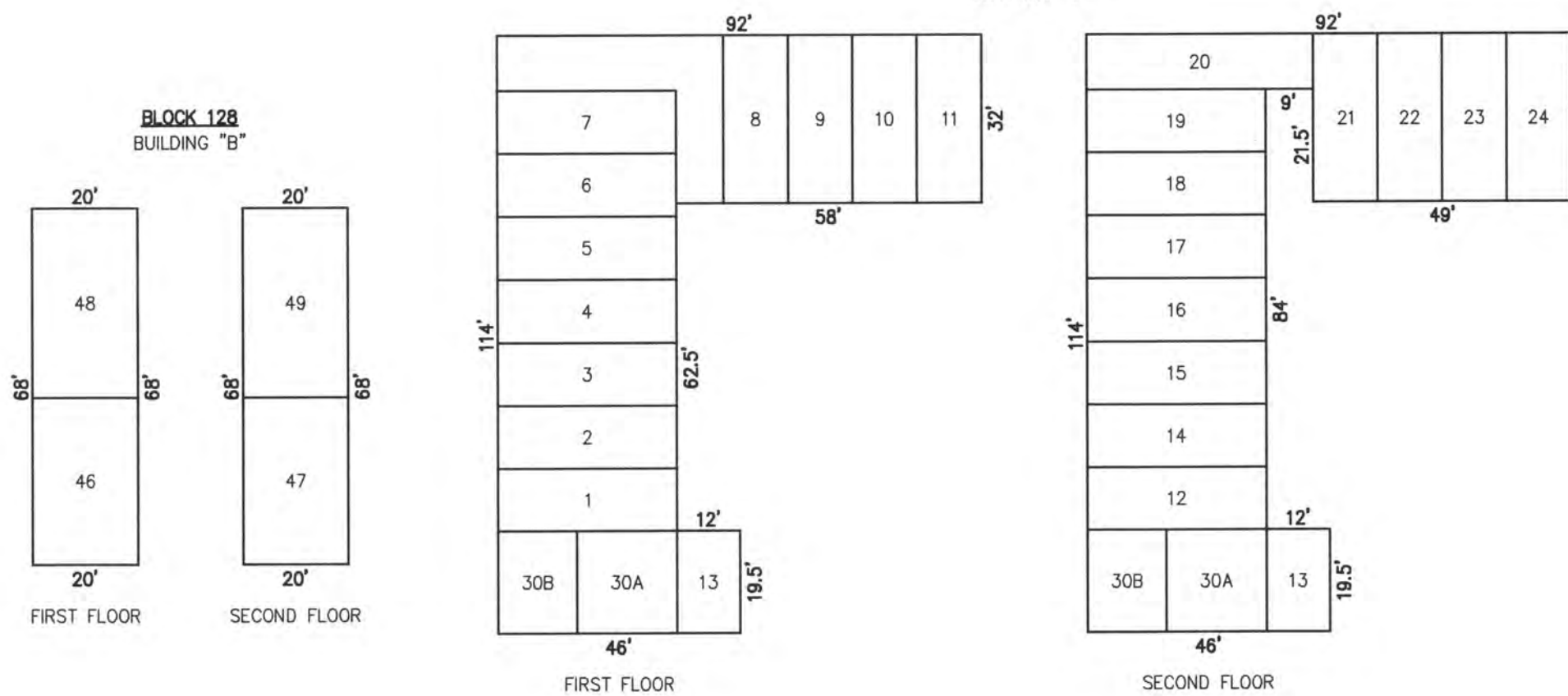


**BLOCK 128, LOT 66
9415-19 PACIFIC AVENUE
BLOCK 128, LOTS 72, 74
9401-I PACIFIC AVENUE
940I CONDO ASSOCIATION CONDOMINIUM
INSET "FF"**

UNIT NO.	LOT NO.
UNIT 31	C-66.31
UNIT 32	C-66.32
UNIT 33	C-66.33
UNIT 34	C-66.34
UNIT 35	C-66.35
UNIT 36	C-66.36
UNIT 37	C-66.37
UNIT 38	C-66.38
UNIT 39	C-66.39
UNIT 40	C-66.40
UNIT 41	C-66.41
UNIT 42	C-66.42
UNIT 43	C-66.43
UNIT 44	C-66.44
UNIT 45	C-66.45
UNIT 46	C-72.46
UNIT 47	C-72.47
UNIT 48	C-72.48
UNIT 49	C-72.49

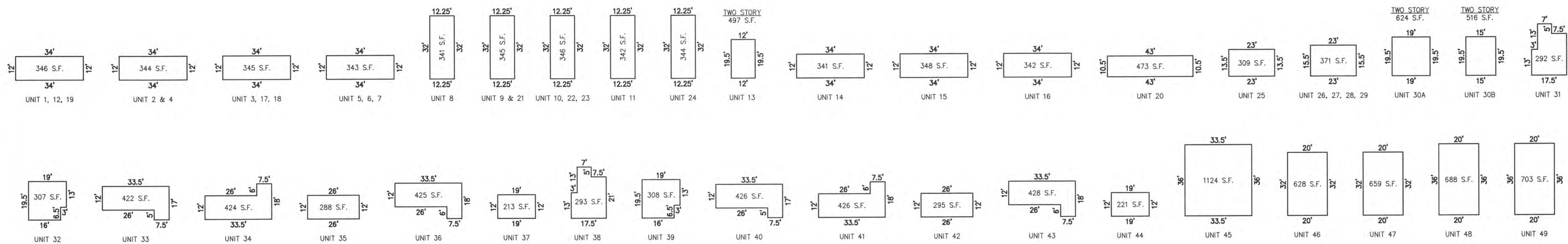


**DETAILS
SCALE: 1"=30'**



**DETAILS
SCALE: 1"=30'**

UNIT NO.	LOT NO.
UNIT 1	C-74.01
UNIT 2	C-74.02
UNIT 3	C-74.03
UNIT 4	C-74.04
UNIT 5	C-74.05
UNIT 6	C-74.06
UNIT 7	C-74.07
UNIT 8	C-74.08
UNIT 9	C-74.09
UNIT 10	C-74.10
UNIT 11	C-74.11
UNIT 12	C-74.12
UNIT 13	C-74.13
UNIT 14	C-74.14
UNIT 15	C-74.15
UNIT 16	C-74.16
UNIT 17	C-74.17
UNIT 18	C-74.18
UNIT 19	C-74.19
UNIT 20	C-74.20
UNIT 21	C-74.21
UNIT 22	C-74.22
UNIT 23	C-74.23
UNIT 24	C-74.24
UNIT 25	C-74.25
UNIT 26	C-74.26
UNIT 27	C-74.27
UNIT 28	C-74.28
UNIT 29	C-74.29
UNIT 30A	C-74.30
UNIT 30B	C-74.31



**DETAILS
SCALE: 1"=30'**

**CONDOMINIUM DETAILS AND DIMENSIONS
BLOCK 127, LOT 21
BLOCK 128, LOT 66, 72, 74
SEE PLATE 4**

"THIS TAX MAP PLATE HAS BEEN DIGITALLY DRAWN USING COMPUTER-AIDED DRAFTING/DESIGN (CADD) & COORDINATE GEOMETRY (COGO). IT IS BASED ON THE ORIGINAL DIGITALLY DRAWN TAX MAP PLATE BEARING THE OFFICIAL NEW JERSEY DIVISION TAXATION APPROVAL STAMP WITH APPROVAL DATE 6-3-2005 SERIAL NUMBER 846 AND SIGNATURES OF SIGNERS' THOMAS J. REILLY, CHIEF, LOCAL PROPERTY, FIELD ASSISTANCE; SANTO C. DIDONATO, SUPERVISING FIELD REPRESENTATIVE. THE ORIGINAL DIGITALLY DRAWN TAX MAP PLATE WITH THE OFFICIAL APPROVAL STAMP IS ON FILE WITH REMINGTON, VERNICK & WALBERG ENGINEERS."

**TAX MAP
CITY OF MARGATE
ATLANTIC COUNTY NEW JERSEY
SCALE: AS NOTED DATE: 1-30-2004**

CRAIG F. REMINGTON LAND SURVEYOR LIC. NO. 23924