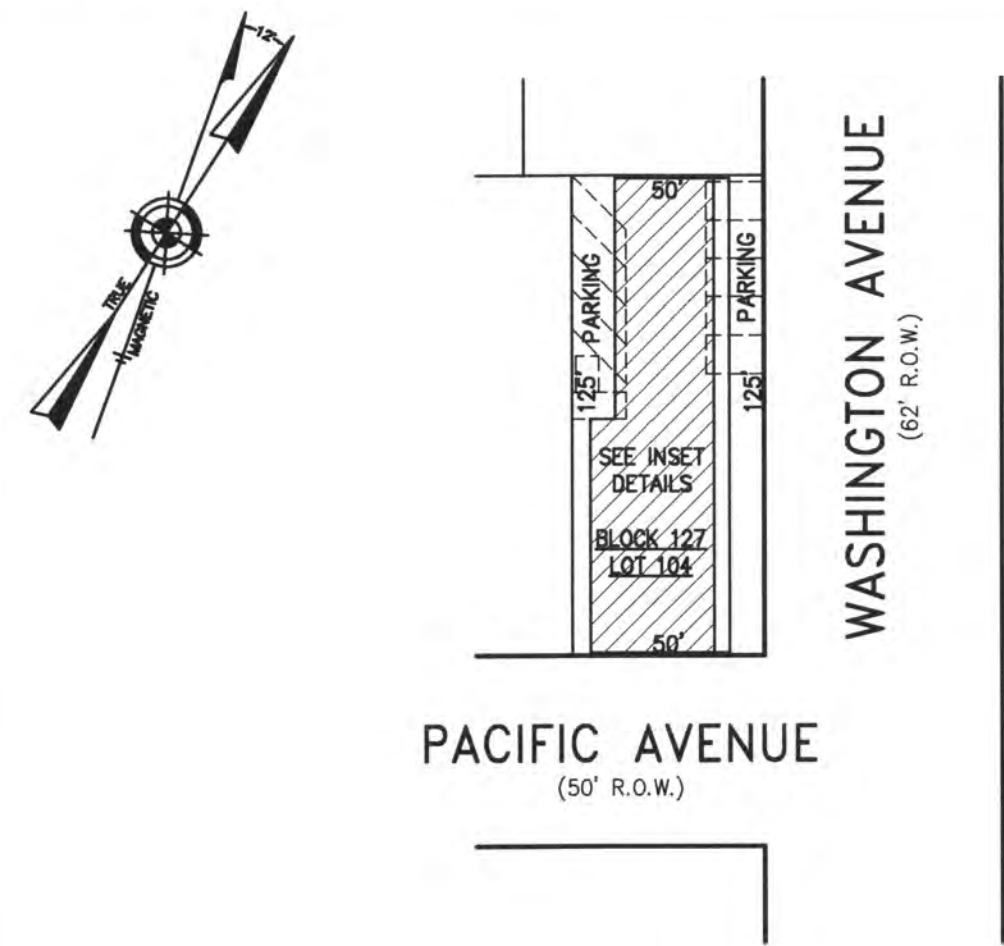


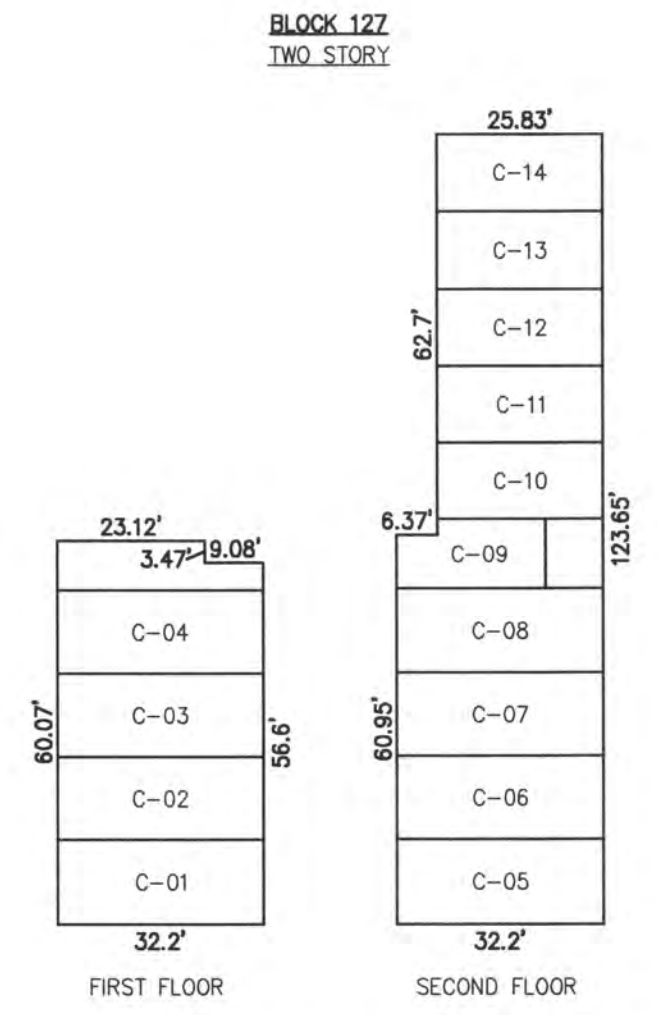
REVISIONS	



**PLAN**  
SCALE: 1"=50'

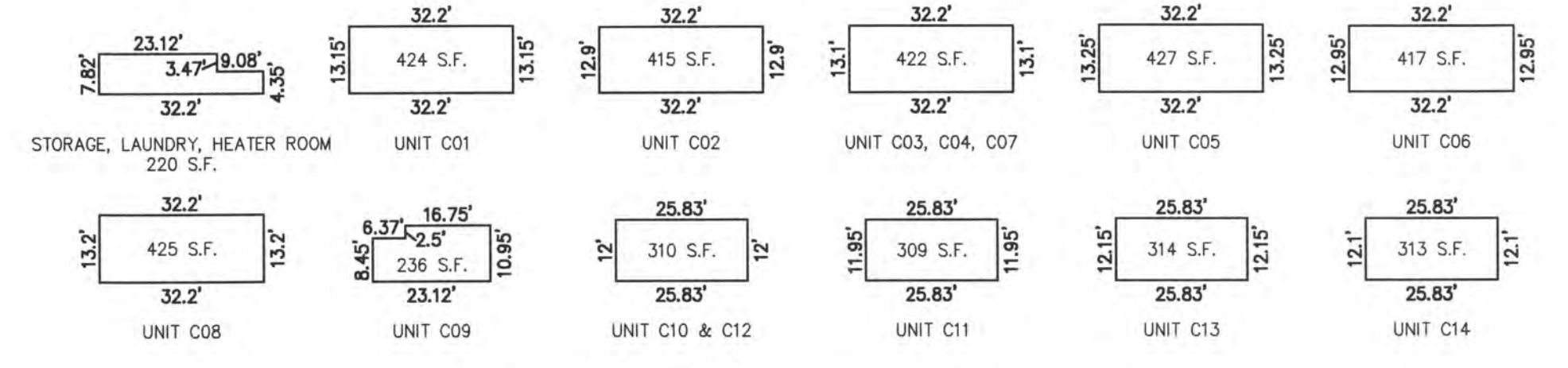
**BLOCK 127, LOT 104**  
**WASHINGTON CONDOMINIUM**  
30 SOUTH WASHINGTON AVENUE  
INSET "AA"

UNIT NO.	LOT NO.
C-01	C-01
C-02	C-02
C-03	C-03
C-04	C-04
C-05	C-05
C-06	C-06
C-07	C-07
C-08	C-08
C-09	C-09
C-10	C-10
C-11	C-11
C-12	C-12
C-13	C-13
C-14	C-14



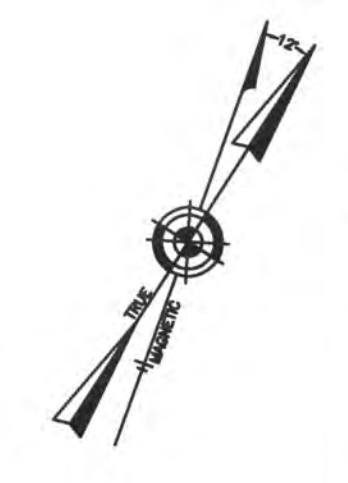
NOTE: UNIT NUMBERS ARE ALSO LOT NUMBERS

**DETAILS**  
SCALE: 1"=30'



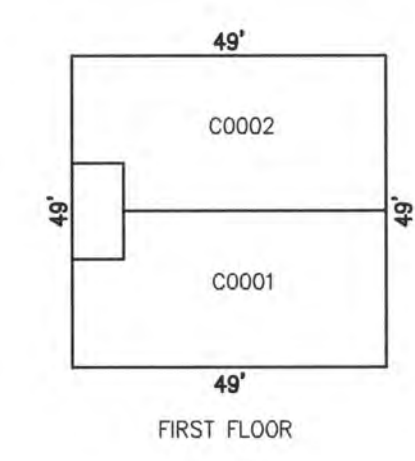
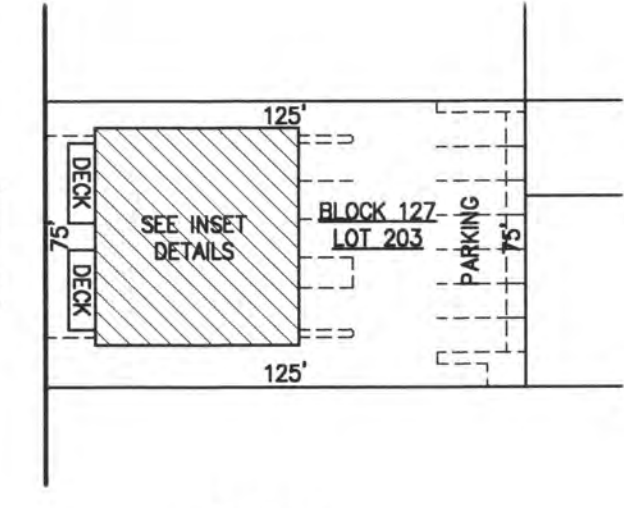
NOTE: DIMENSIONS AND SQUARE FOOTAGE ARE TYPICAL FOR SIMILAR UNITS

**DETAILS**  
SCALE: 1"=30'

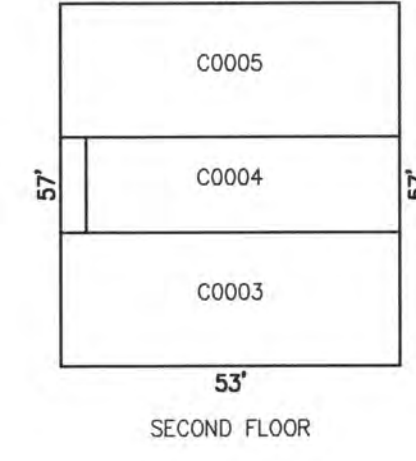


**PLAN**  
SCALE: 1"=50'

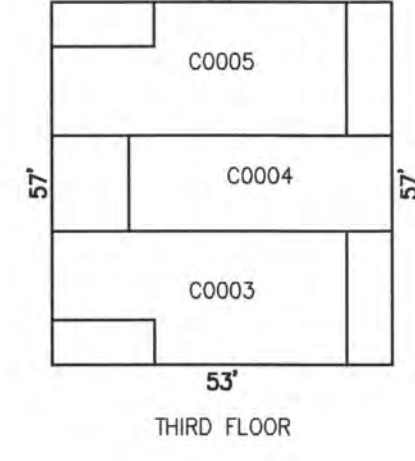
**ADAMS AVENUE**  
(50' R.O.W.)



FIRST FLOOR



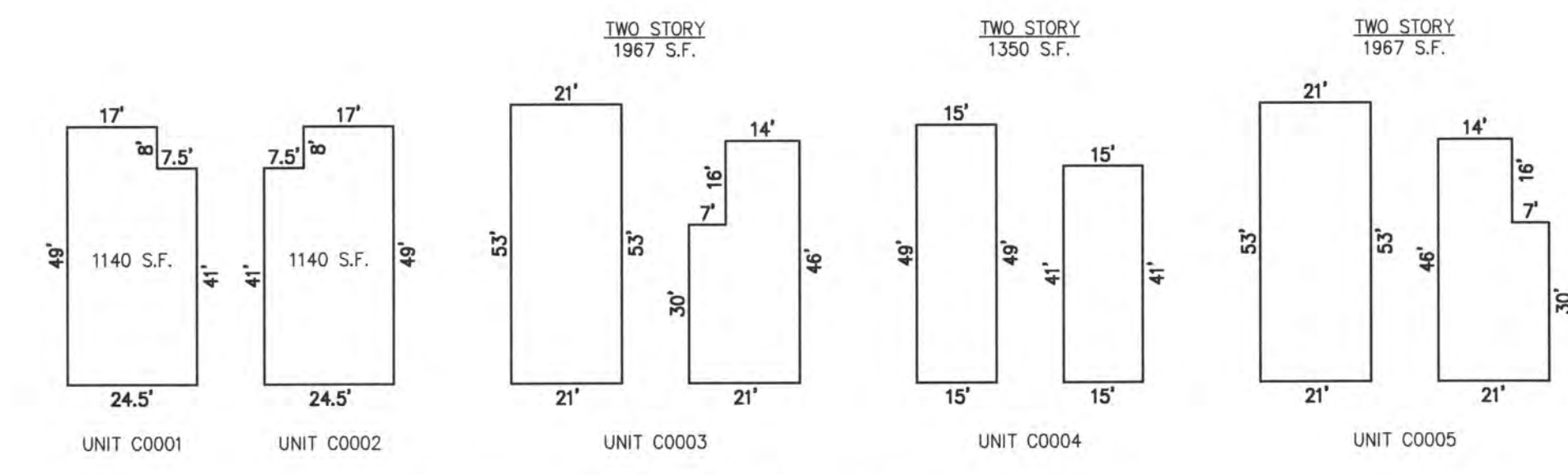
SECOND FLOOR



THIRD FLOOR

**DETAILS**  
SCALE: 1"=30'

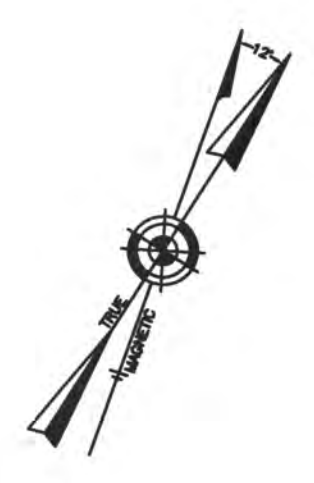
UNIT NO.	LOT NO.
C0001	C-01
C0002	C-02
C0003	C-03
C0004	C-04
C0005	C-05



NOTE: DIMENSIONS AND SQUARE FOOTAGE ARE TYPICAL FOR SIMILAR UNITS

**DETAILS**  
SCALE: 1"=30'

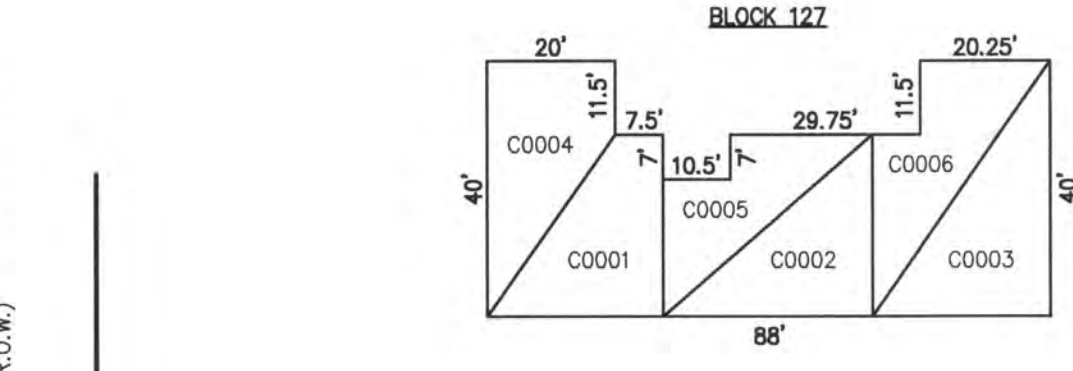
**BLOCK 127, LOT 203**  
**SEA LOFT CONDOMINIUM**  
21 SOUTH ADAMS AVENUE  
INSET "BB"



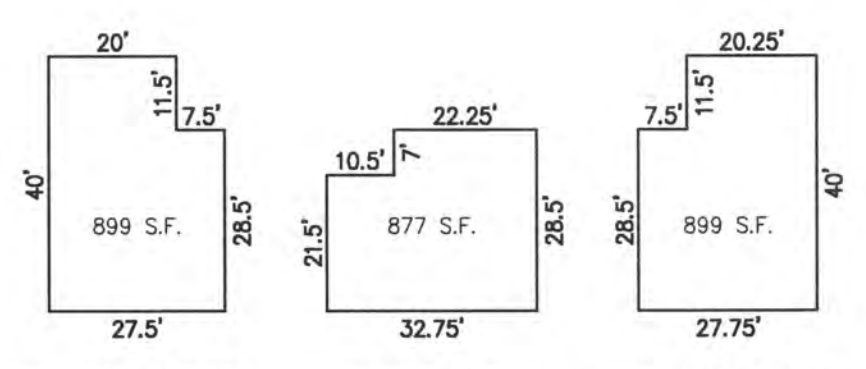
**PLAN**  
SCALE: 1"=50'

**BLOCK 127, LOT 204**  
**ATLANTIC VIEW CONDOMINIUM**  
22 SOUTH WASHINGTON AVENUE  
INSET "CC"

**WASHINGTON AVENUE**  
(62' R.O.W.)

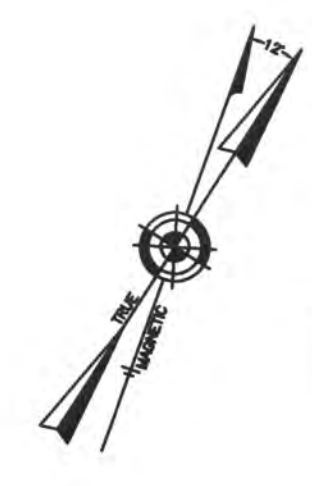


UNIT NO.	LOT NO.
C0001	C-01
C0002	C-02
C0003	C-03
C0004	C-04
C0005	C-05
C0006	C-06



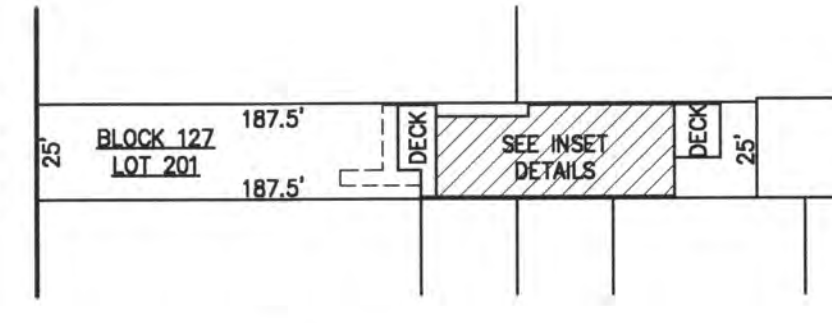
NOTE: 1. DIMENSIONS AND SQUARE FOOTAGE ARE TYPICAL FOR FIRST AND SECOND FLOOR  
2. DIMENSIONS AND SQUARE FOOTAGE ARE TYPICAL FOR SIMILAR UNITS

**DETAILS**  
SCALE: 1"=30'

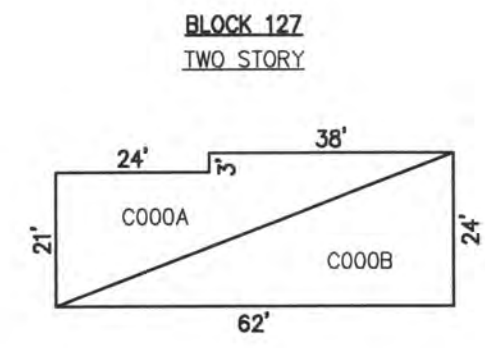


**PLAN**  
SCALE: 1"=50'

**ADAMS AVENUE**  
(50' R.O.W.)



**BLOCK 127, LOT 201**  
**23 SOUTH ADAMS CONDOMINIUM**  
23 SOUTH ADAMS AVENUE  
INSET "DD"



UNIT C000A & C000B  
1425 S.F.  
FIRST & SECOND FLOOR

NOTE: DIMENSIONS AND SQUARE FOOTAGE ARE TYPICAL FOR FIRST AND SECOND FLOOR

**DETAILS**  
SCALE: 1"=30'

UNIT NO.	LOT NO.
C000A	C-01
C000B	C-02

CONDOMINIUM DETAILS AND DIMENSIONS  
BLOCK 127, LOT 104  
BLOCK 127, LOT 201  
BLOCK 127, LOT 203  
BLOCK 127, LOT 204  
SEE PLATE 4

"THIS TAX MAP PLATE HAS BEEN DIGITALLY DRAWN USING COMPUTER-AIDED DRAFTING/DESIGN (CADD) & COORDINATE GEOMETRY (COGO). IT IS BASED ON THE ORIGINAL DIGITALLY DRAWN TAX MAP PLATE BEARING THE OFFICIAL NEW JERSEY DIVISION TAXATION APPROVAL STAMP WITH APPROVAL DATE 6-3-2005 SERIAL NUMBER 846 AND SIGNATURES OF SIGNERS' THOMAS J. REILLY, CHIEF, LOCAL PROPERTY, FIELD ASSISTANCE. SANTO C. DIDONATO, SUPERVISING FIELD REPRESENTATIVE. THE ORIGINAL DIGITALLY DRAWN TAX MAP PLATE WITH THE OFFICIAL APPROVAL STAMP IS ON FILE WITH REMINGTON, VERNICK & WALBERG ENGINEERS."



**TAX MAP**  
**CITY OF MARGATE**

ATLANTIC COUNTY NEW JERSEY  
SCALE: AS NOTED DATE: 1-30-2004

**CRAIG F. REMINGTON LAND SURVEYOR LIC. NO. 23924**

24 GA 28048700  
**REMINGTON, VERNICK & WALBERG ENGINEERS**  
845 N. MAIN STREET, PLEASANTVILLE, N.J. 08232  
(609) 645-700, FAX (609) 645-7076  
WEB SITE ADDRESS: WWW.RVE.COM