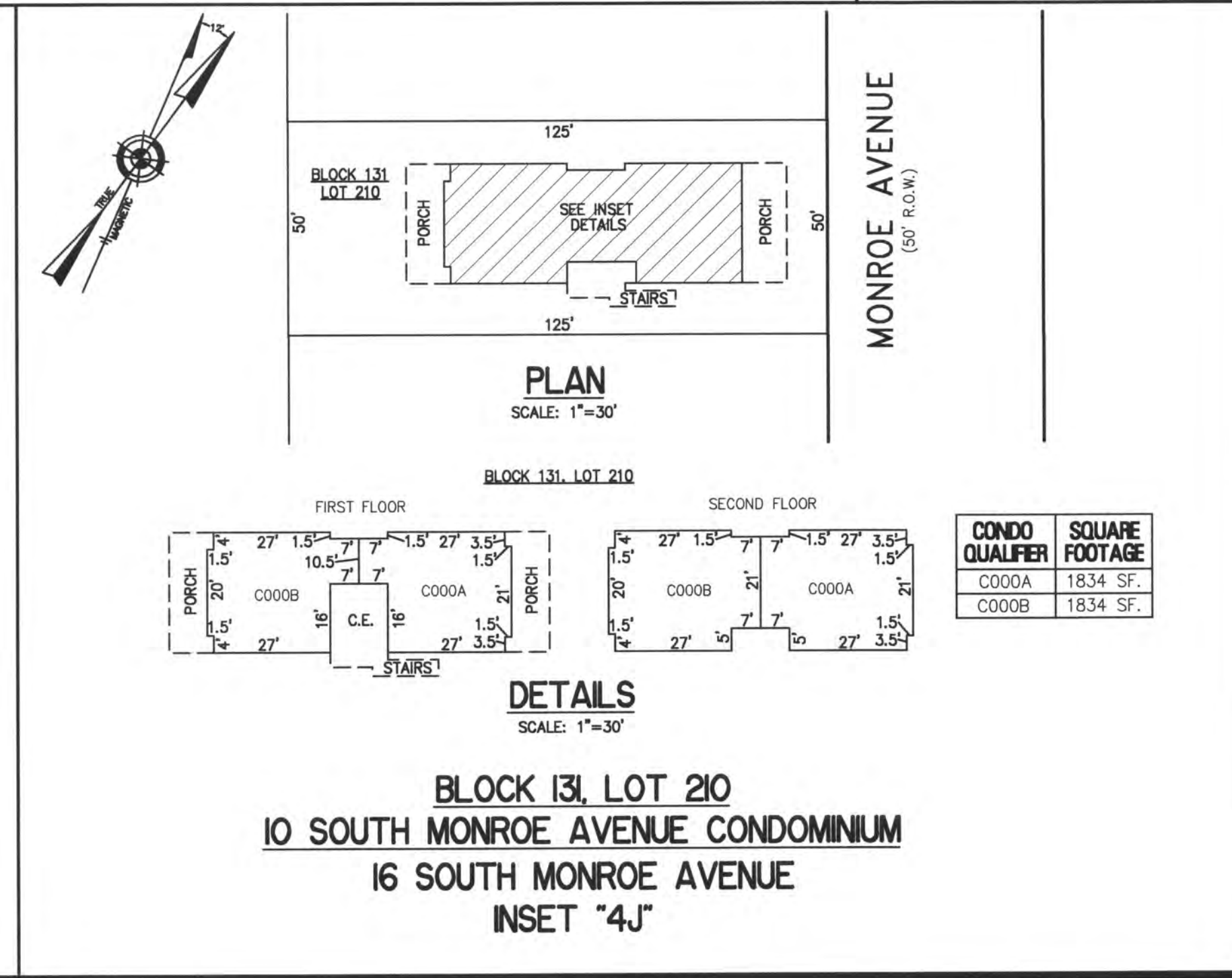
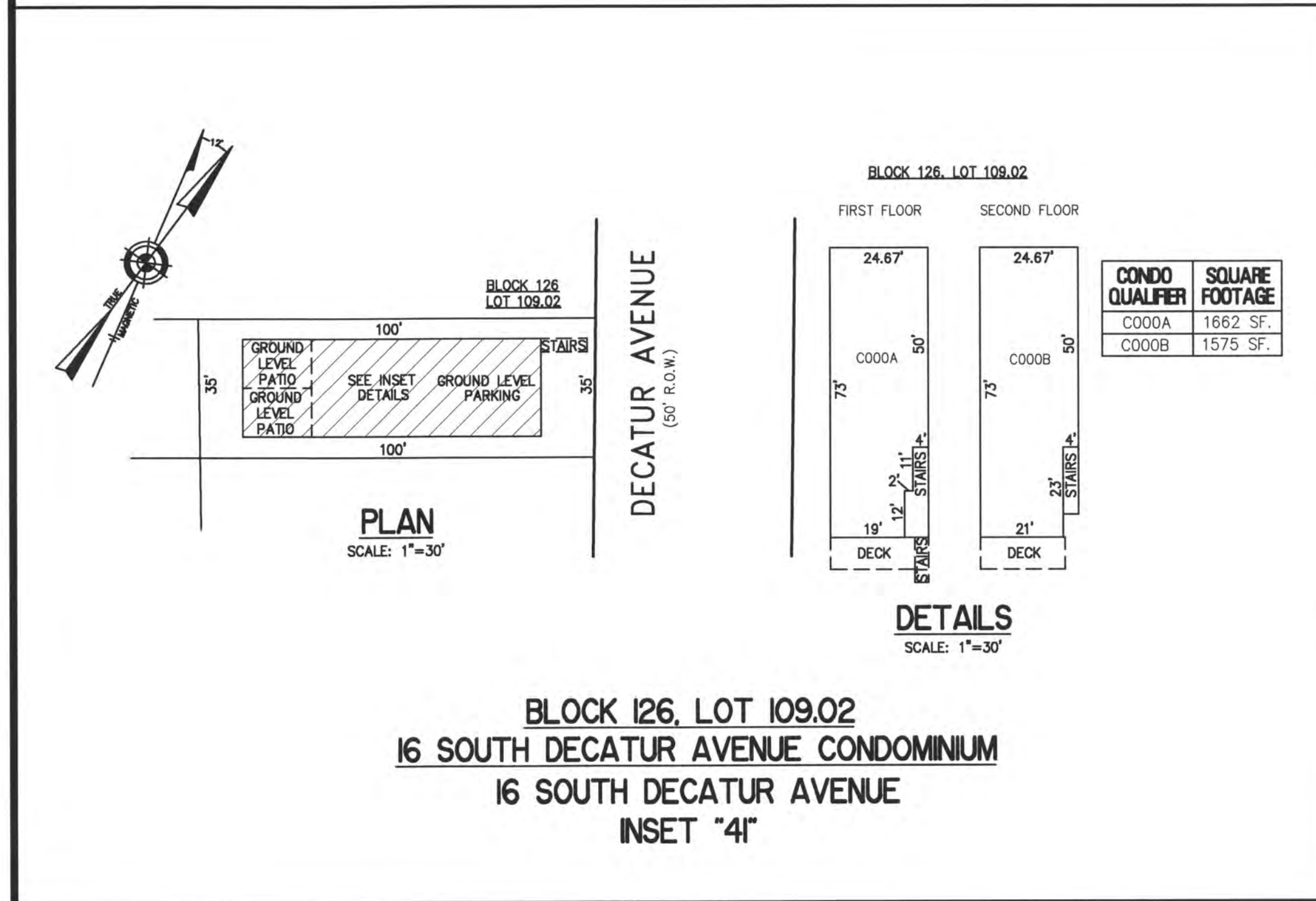
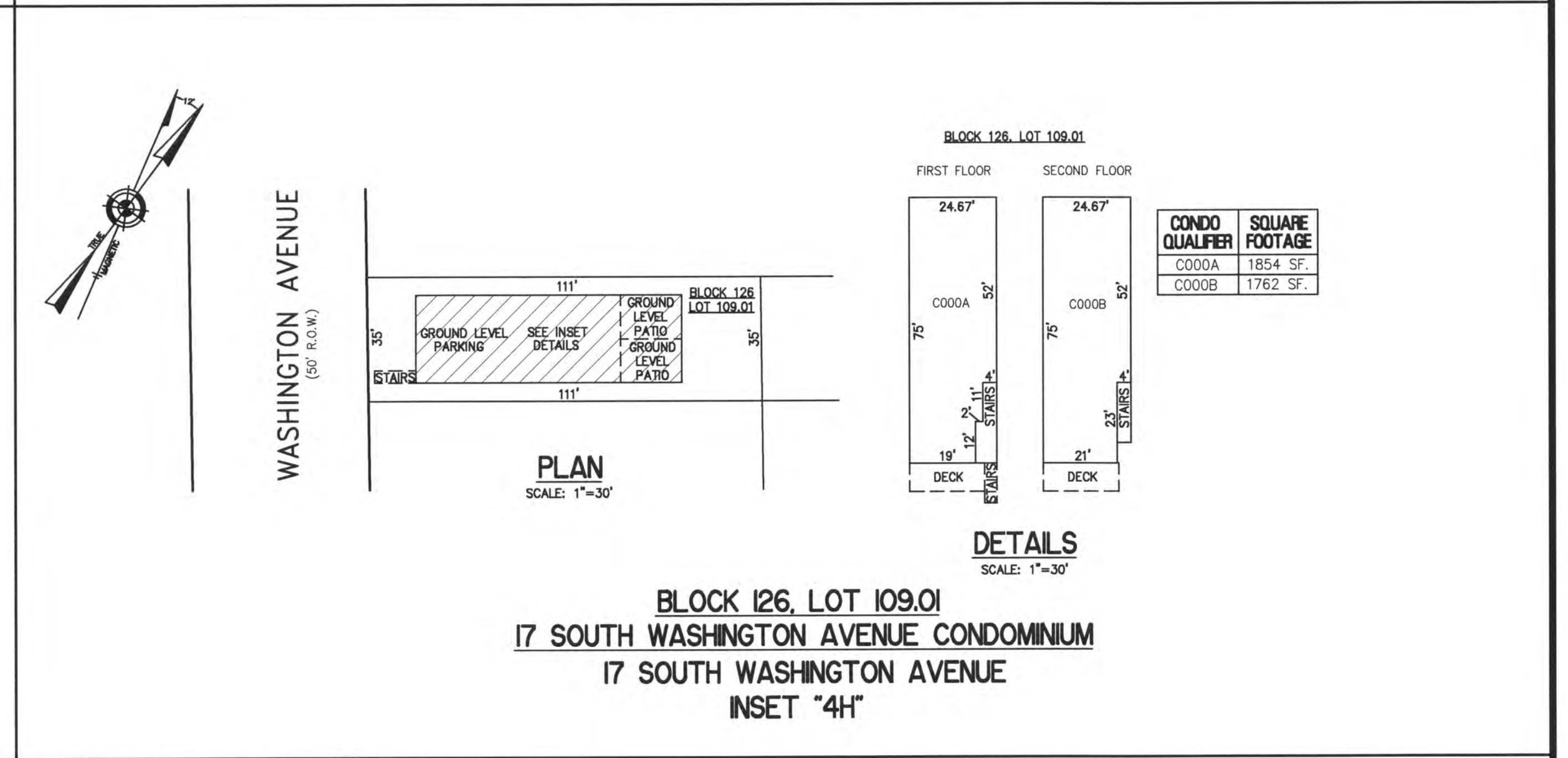
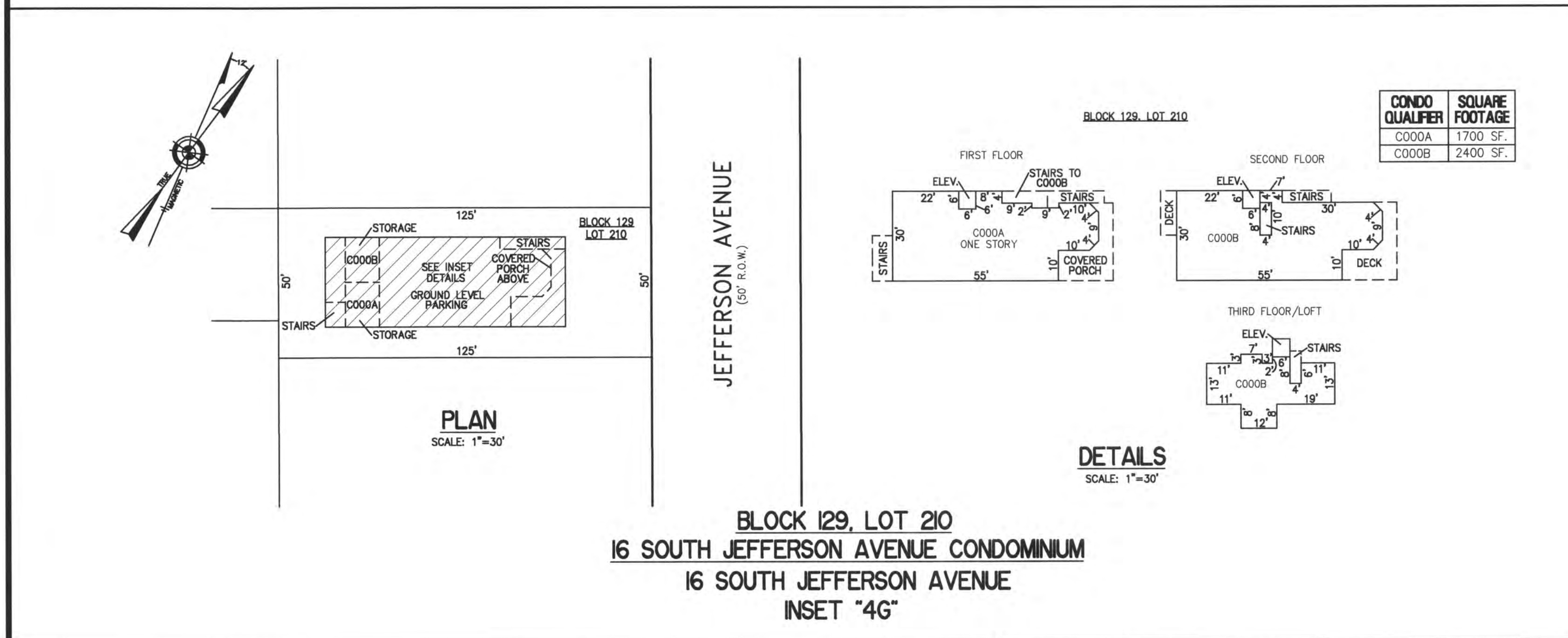
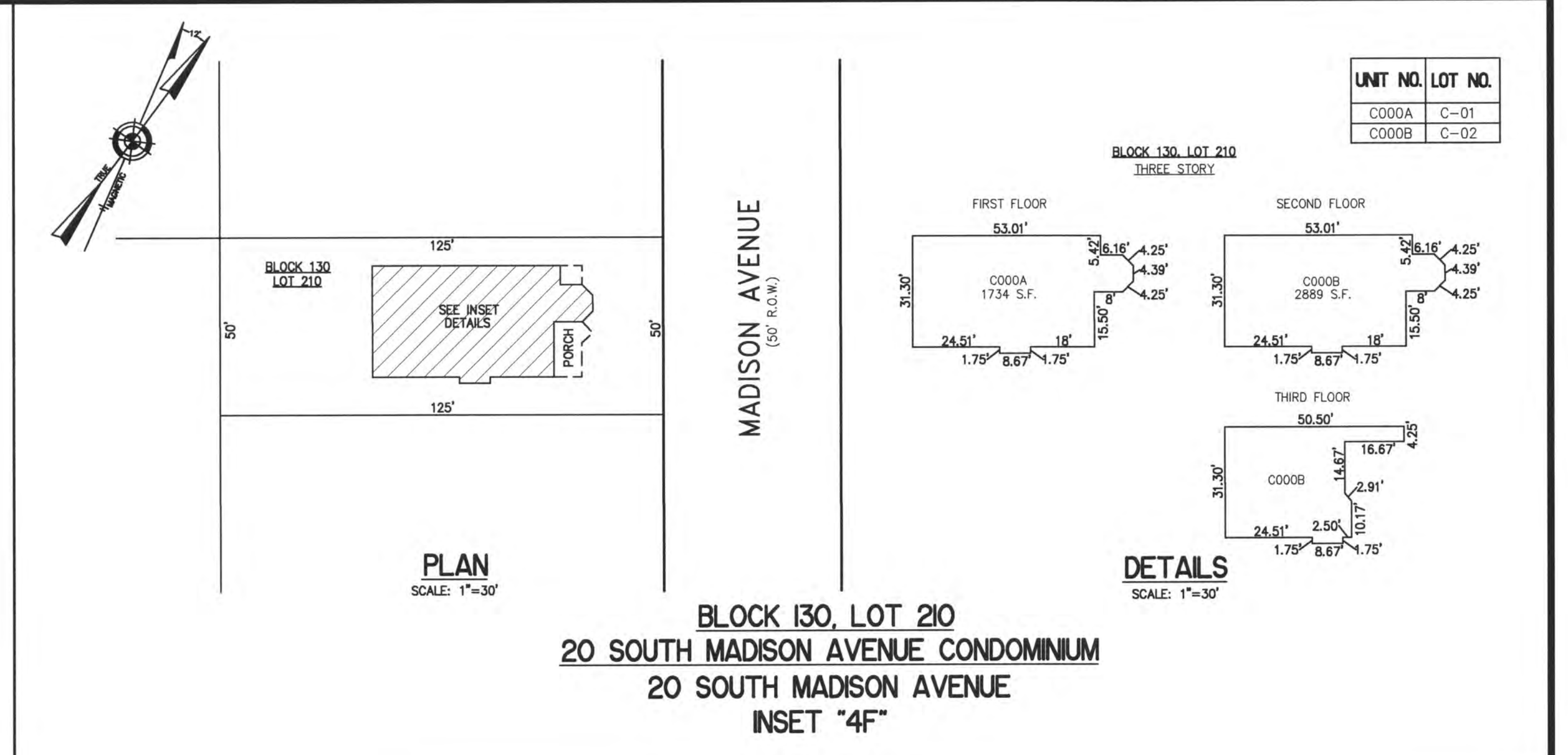
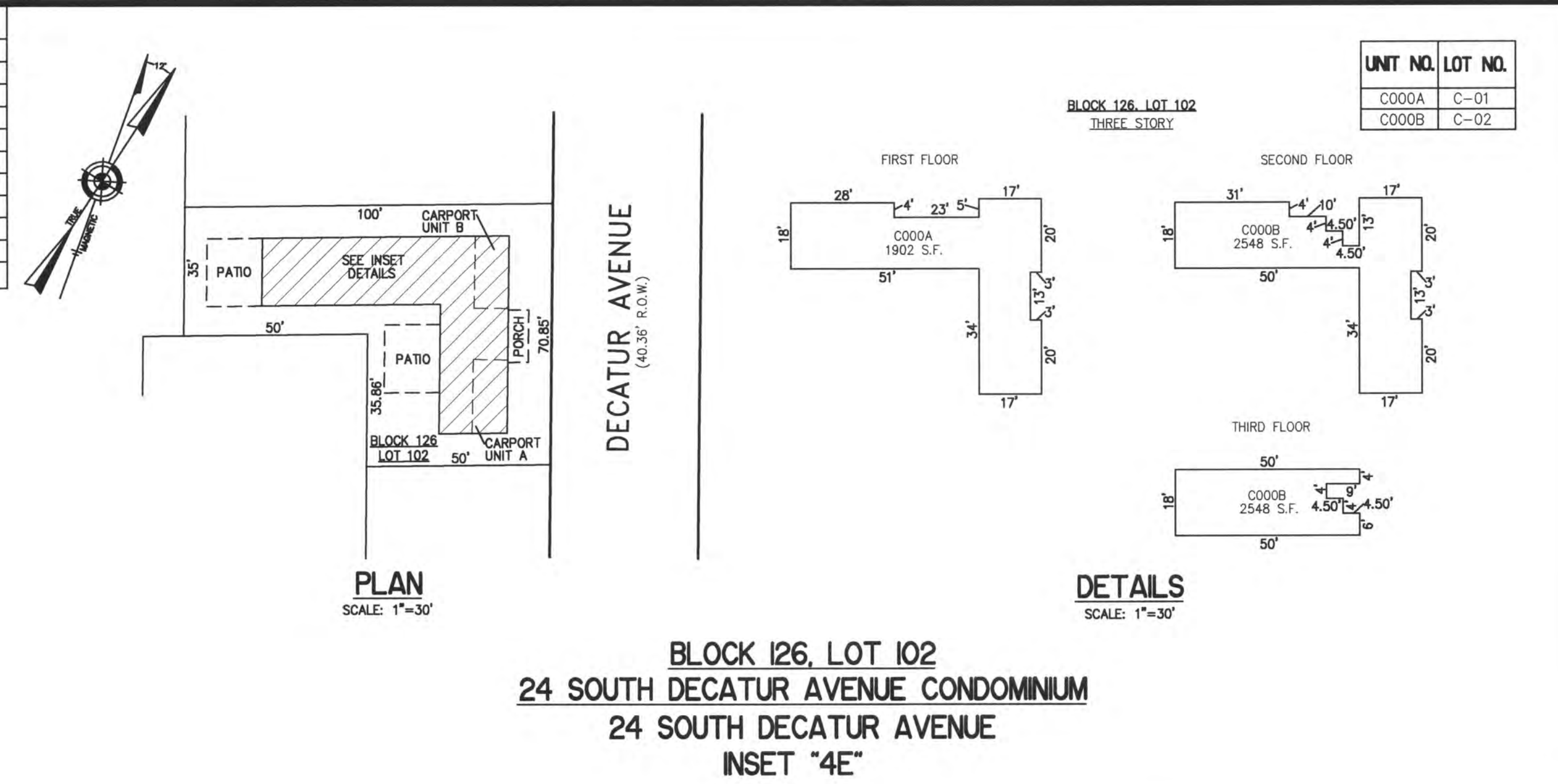


REVISIONS		
4-24-2014	CRAIG F. REMINGTON	23924
1-20-2015	CHARLES E. ADAMSON	42627
12-11-2015	CHARLES E. ADAMSON	42627



CONDOMINIUM DETAILS AND DIMENSIONS
 BLOCK 126, LOT 102
 BLOCK 126, LOT 109.01
 BLOCK 126, LOT 109.02
 BLOCK 129, LOT 210
 BLOCK 130, LOT 210
 BLOCK 131, LOT 210
 SEE PLATE 4

THIS TAX MAP PLATE HAS BEEN DIGITALLY DRAWN USING COMPUTER-AIDED DRAFTING/DESIGN (CADD) & COORDINATE GEOMETRY (COCO). IT IS BASED ON THE ORIGINAL DIGITALLY DRAWN TAX MAP PLATE BEARING THE OFFICIAL NEW JERSEY DIVISION TAXATION APPROVAL STAMP WITH APPROVAL DATE 6-3-2005 SERIAL NUMBER 846 AND SIGNATURES OF SIGNERS' THOMAS J. REILLY, CHIEF, LOCAL PROPERTY, FIELD ASSISTANCE, SANTO C. DIDONATO, SUPERVISING FIELD REPRESENTATIVE. THIS TAX MAP PLATE HAS BEEN DIGITALLY UPDATED TO REFLECT CONDITIONS AS OF 12-11-2015. THE ORIGINAL DIGITALLY DRAWN TAX MAP PLATE WITH THE OFFICIAL APPROVAL STAMP IS ON FILE WITH REMINGTON, VERNICK & WALBERG ENGINEERS."

TAX MAP
CITY OF MARGATE
ATLANTIC COUNTY NEW JERSEY
SCALE: AS NOTED DATE: 3-8-2012

CRAIG F. REMINGTON LAND SURVEYOR LIC. NO. 23924

REMINGTON, VERNICK & WALBERG ENGINEERS
24 GA 28048700
845 N. MAIN STREET, PLEASANTVILLE, NJ 08232
(609) 645-710, FAX (609) 645-7076
WEB SITE ADDRESS: WWW.RVW.COM