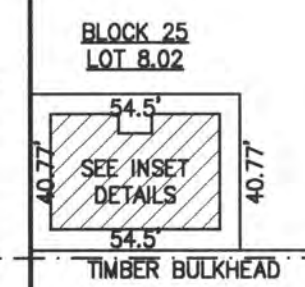


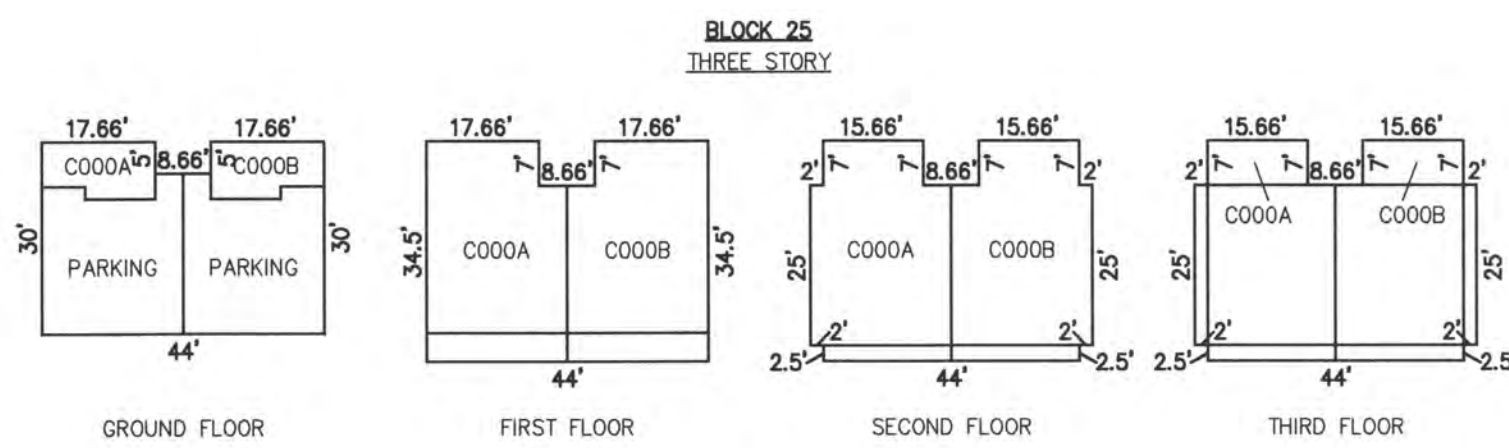
REVISIONS



DECATUR AVENUE
(40.357' R.O.W.)

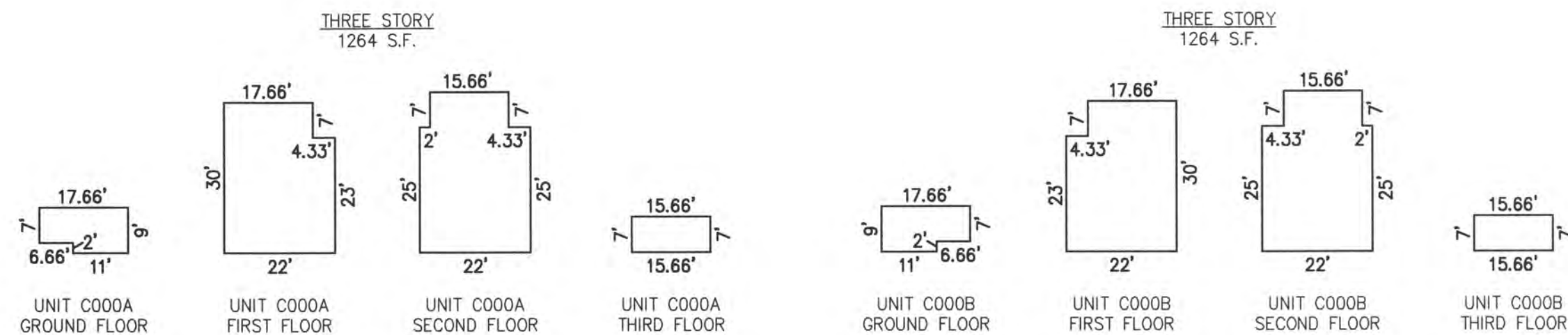


PLAN
SCALE: 1"=50'



NOTE: UNIT NUMBERS ARE ALSO LOT NUMBERS

UNIT NO.	LOT NO.
C000A	C-01
C000B	C-02

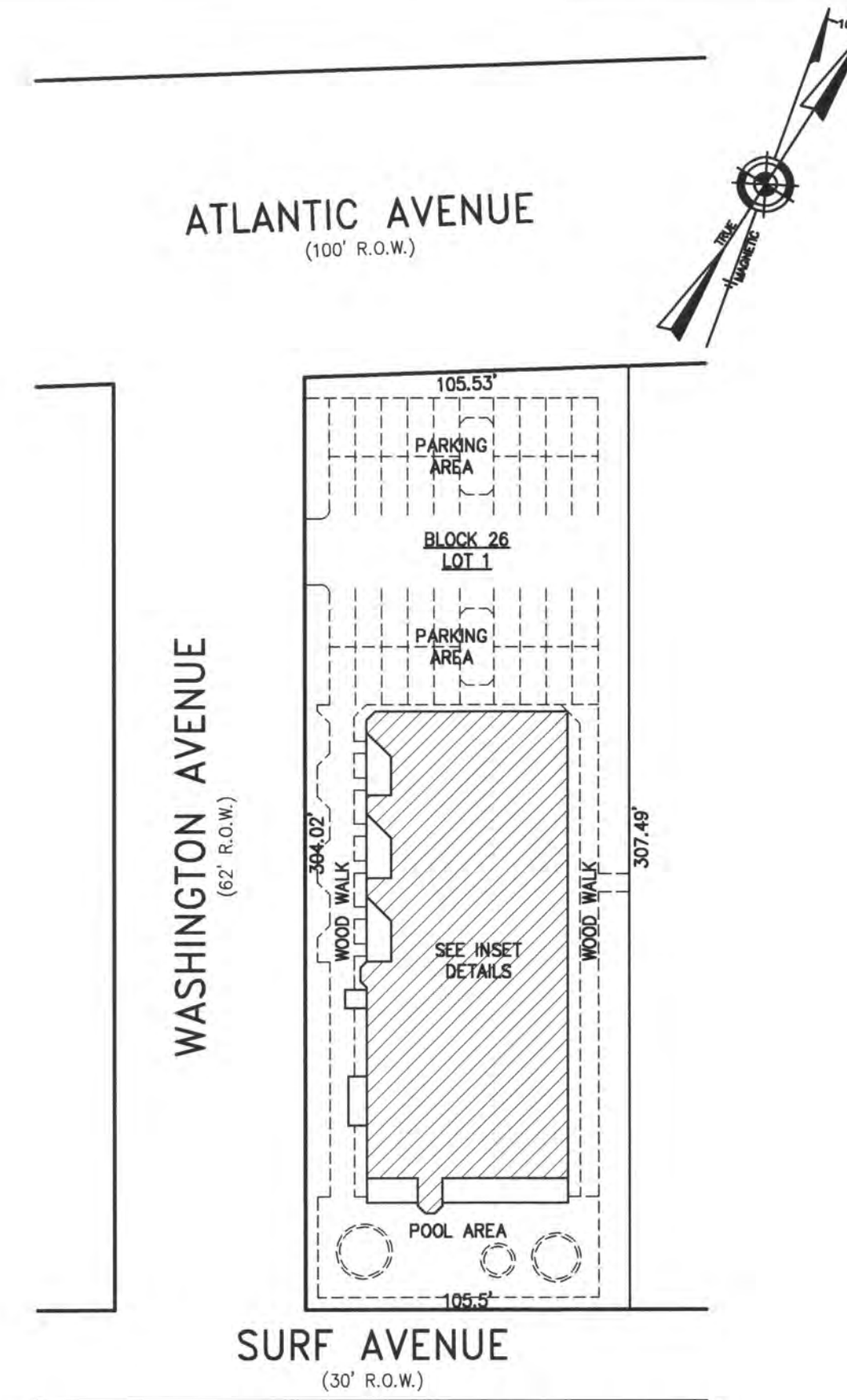


NOTE: DIMENSIONS AND SQUARE FOOTAGE ARE TYPICAL FOR SIMILAR UNITS

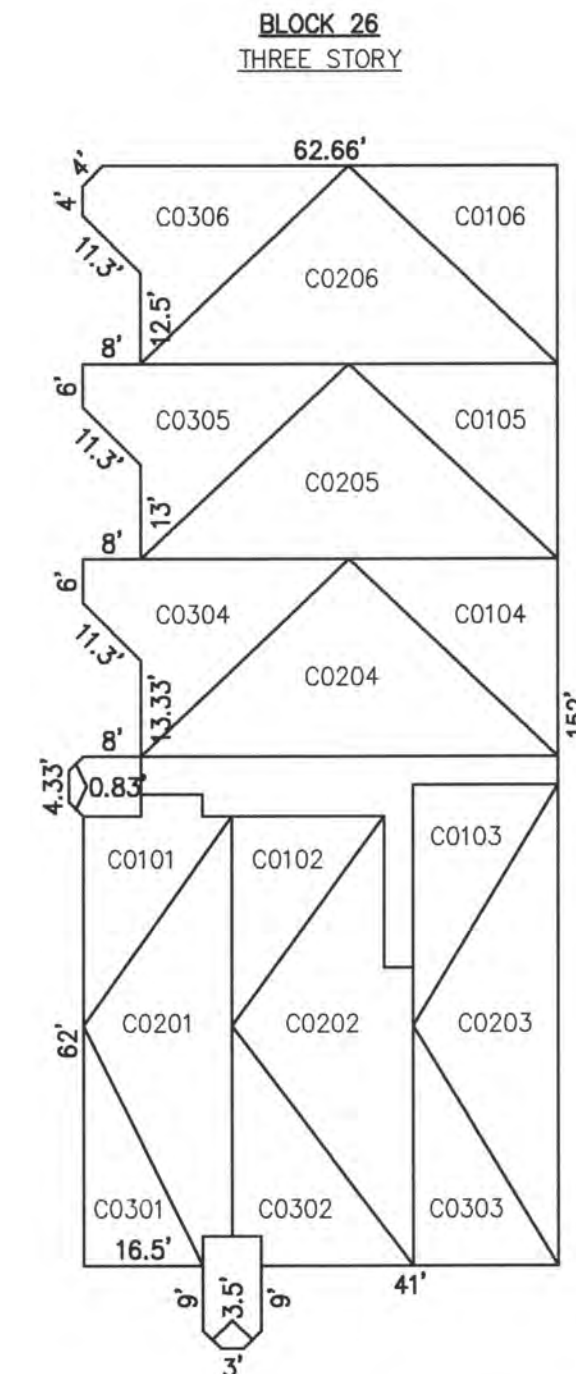
DETAILS
SCALE: 1"=30'

**BLOCK 25, LOT 8.02
DECATUR BEACH CONDOMINIUM
III SOUTH DECATUR AVENUE
INSET "H"**

**CONDOMINIUM DETAILS AND DIMENSIONS
BLOCK 25, LOT 8.02
BLOCK 26, LOT 1
SEE PLATE 23**

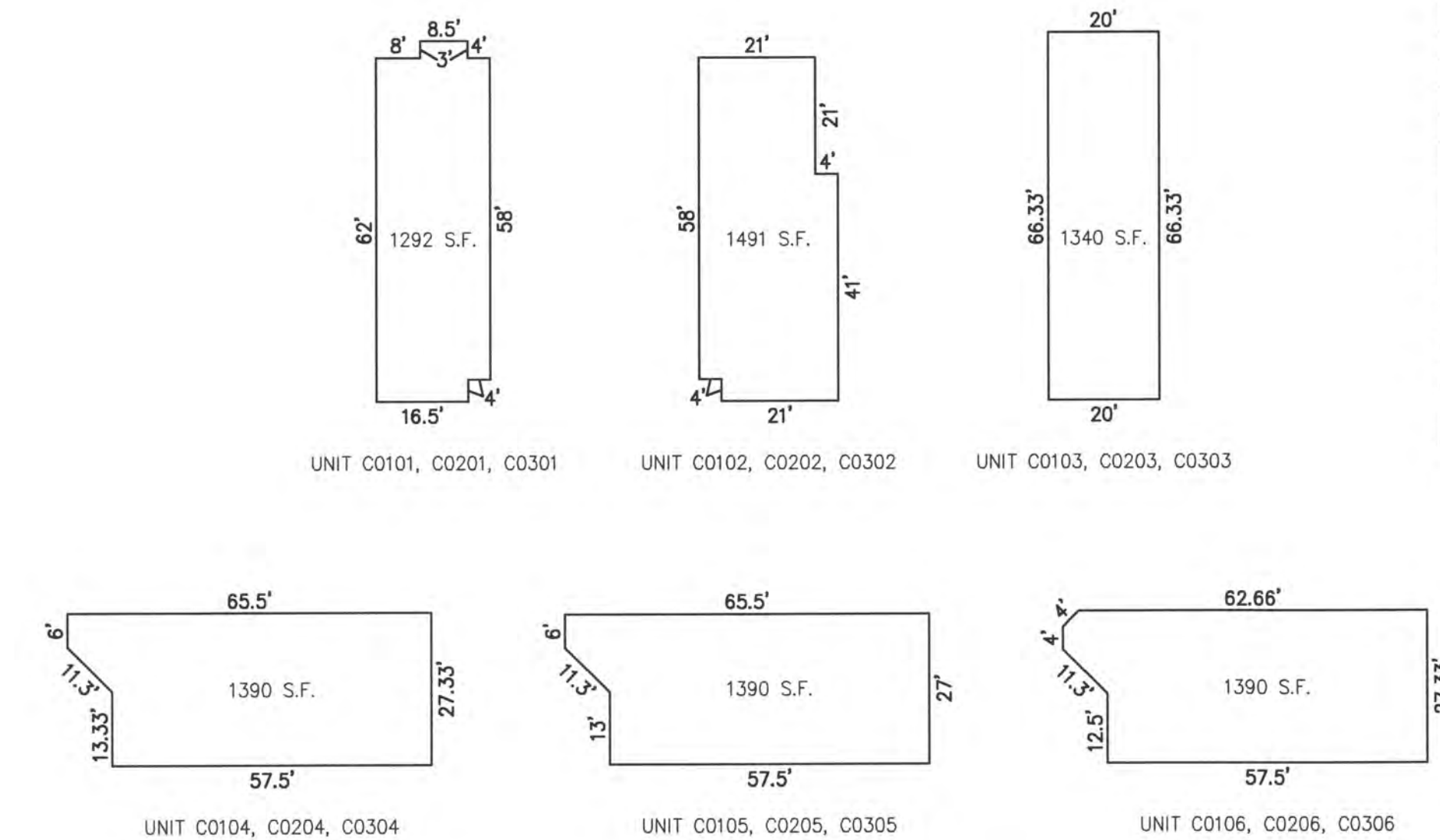


PLAN
SCALE: 1"=50'



NOTE: UNIT NUMBERS ARE ALSO LOT NUMBERS

UNIT NO.	LOT NO.
C0101	C-101
C0102	C-102
C0103	C-103
C0104	C-104
C0105	C-105
C0106	C-106
C0201	C-201
C0202	C-202
C0203	C-203
C0204	C-204
C0205	C-205
C0206	C-206
C0301	C-301
C0302	C-302
C0303	C-303
C0304	C-304
C0305	C-305
C0306	C-306



NOTE: 1. DIMENSIONS AND SQUARE FOOTAGE ARE TYPICAL FOR ALL FLOORS
2. DIMENSIONS AND SQUARE FOOTAGE ARE TYPICAL FOR SIMILAR UNITS

DETAILS
SCALE: 1"=30'

**BLOCK 26, LOT 1
IVORY BEACH CONDOMINIUM
9220 ATLANTIC AVENUE
INSET "I"**

"THIS TAX MAP PLATE HAS BEEN DIGITALLY DRAWN USING COMPUTER-AIDED DRAFTING/DESIGN (CADD) & COORDINATE GEOMETRY (COGO). IT IS BASED ON THE ORIGINAL DIGITALLY DRAWN TAX MAP PLATE BEARING THE OFFICIAL NEW JERSEY DIVISION TAXATION APPROVAL STAMP WITH APPROVAL DATE 6-5-2005 SERIAL NUMBER 846 AND SIGNATURES OF SIGNERS THOMAS J. REILLY, CHIEF, LOCAL PROPERTY, FIELD ASSISTANCE, SANTO C. DIDONATO, SUPERVISING FIELD REPRESENTATIVE. THE ORIGINAL DIGITALLY DRAWN TAX MAP PLATE WITH THE OFFICIAL APPROVAL STAMP IS ON FILE WITH REMINGTON, VERNICK & WALBERG ENGINEERS."

**TAX MAP
CITY OF MARGATE**

ATLANTIC COUNTY NEW JERSEY
SCALE: AS NOTED DATE: 1-30-2004

CRAIG F. REMINGTON LAND SURVEYOR LIC. NO. 23924



REMINGTON, VERNICK & WALBERG ENGINEERS
845 N. MAIN STREET, PLEASANTVILLE, N.J. 08232
(609) 645-710, FAX (609) 645-7076
WEB SITE ADDRESS: WWW.RVE.COM