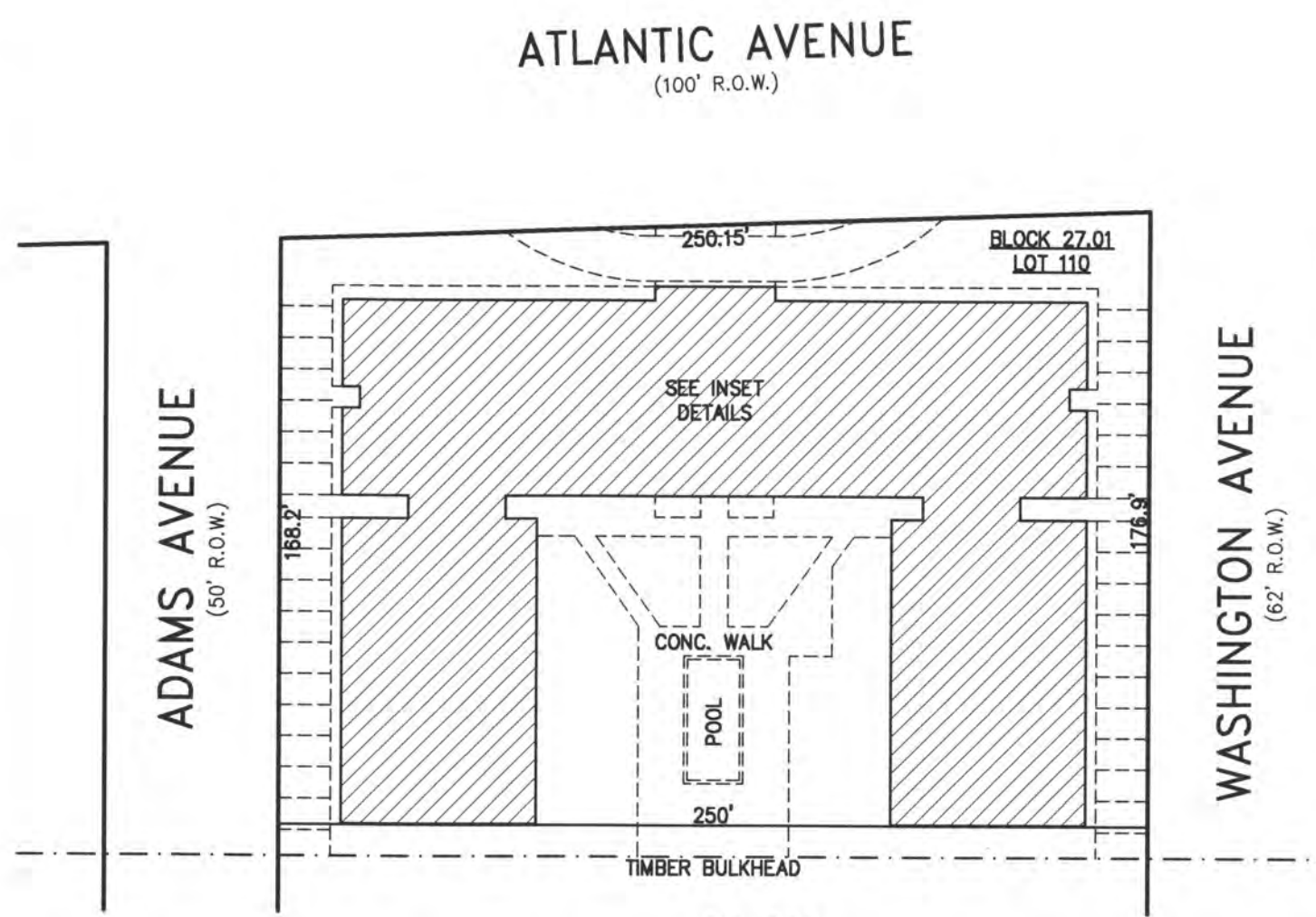
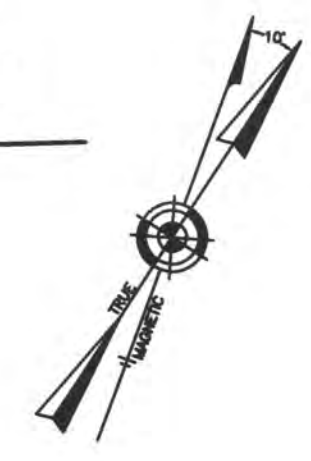
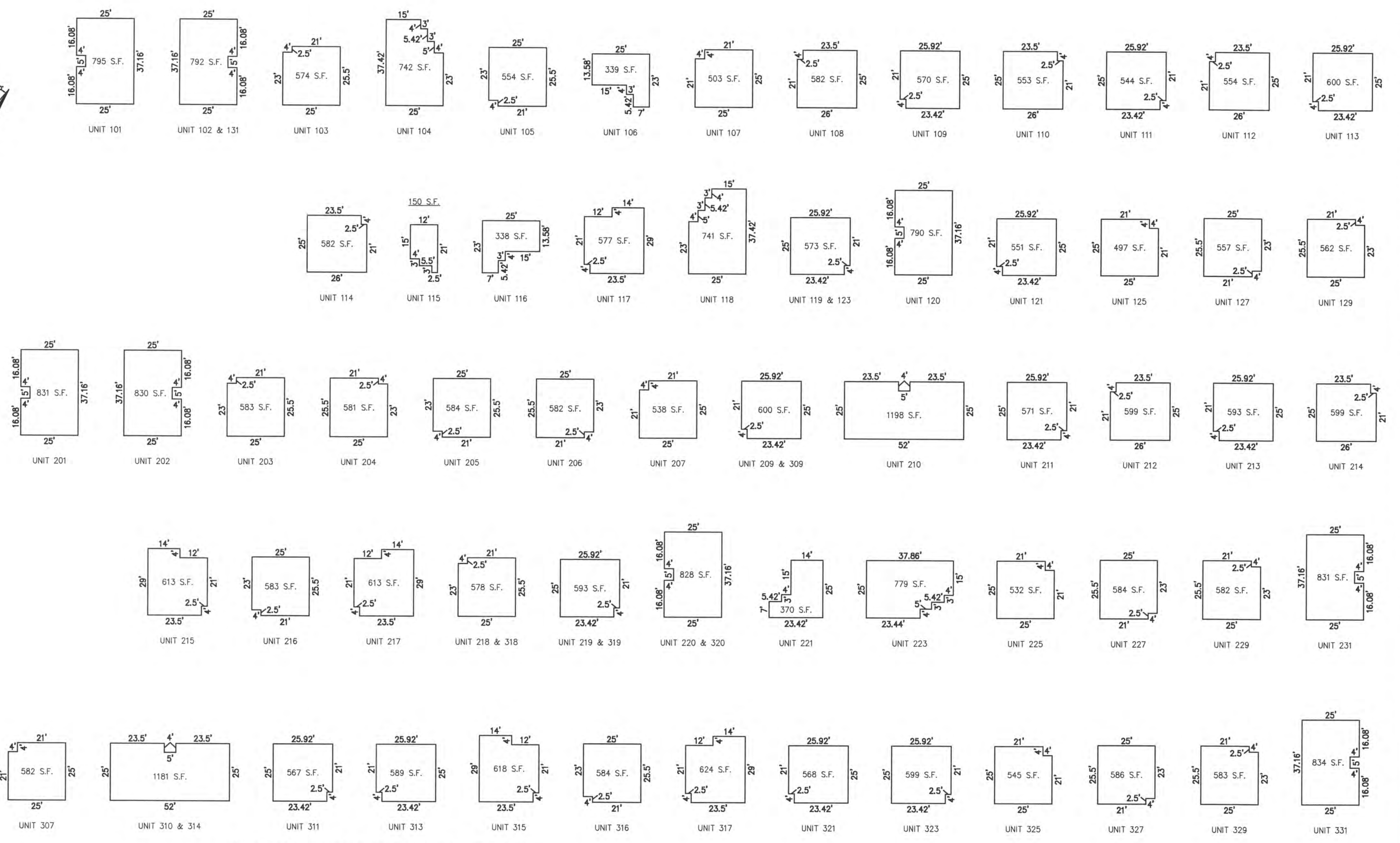


REVISIONS

**PLAN**  
SCALE: 1"=50'

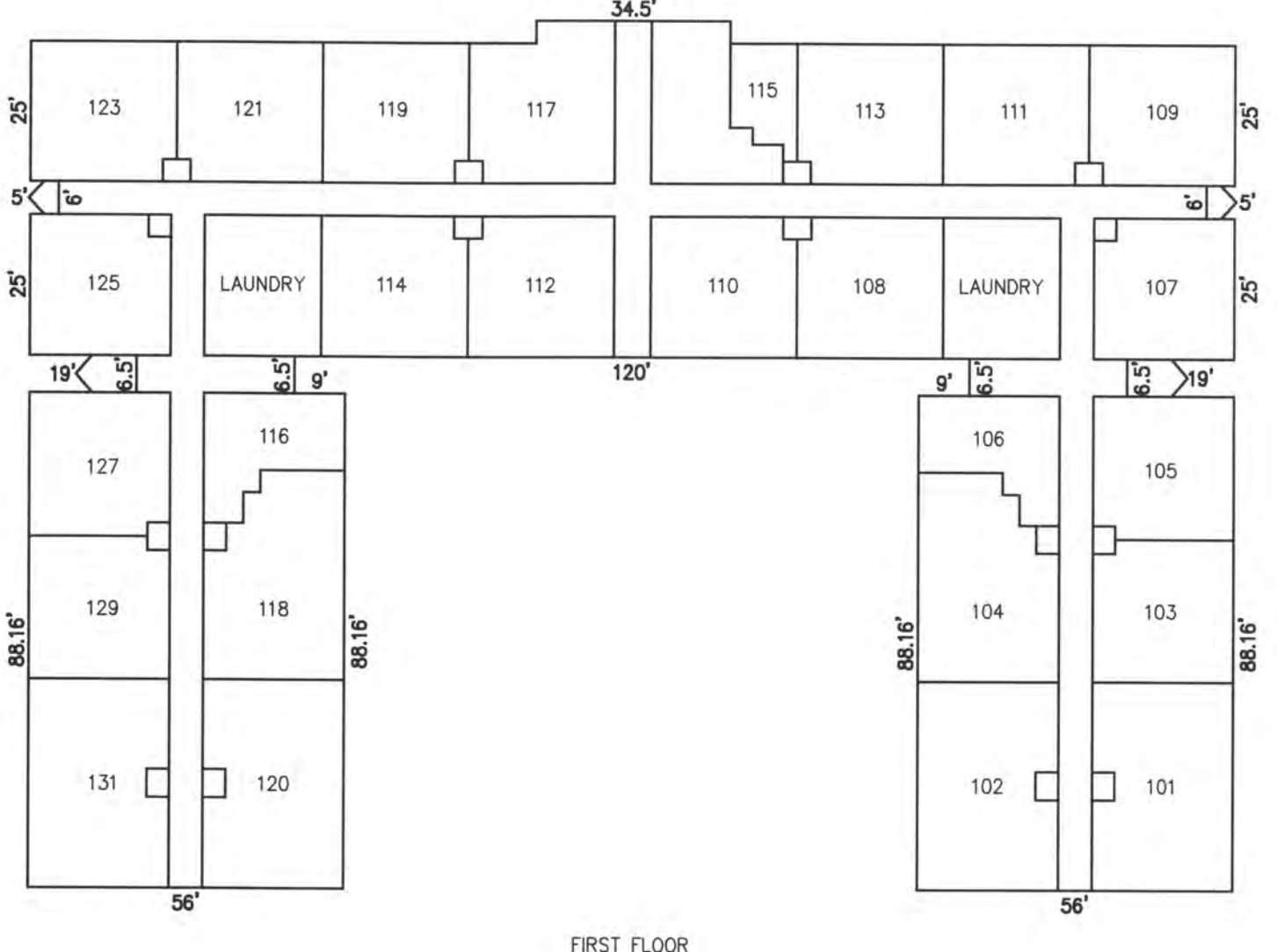
**BLOCK 27.01, LOT 110**  
**SHORE CLUB CONDOMINIUM**  
**9300 ATLANTIC AVENUE**  
**INSET "K"**



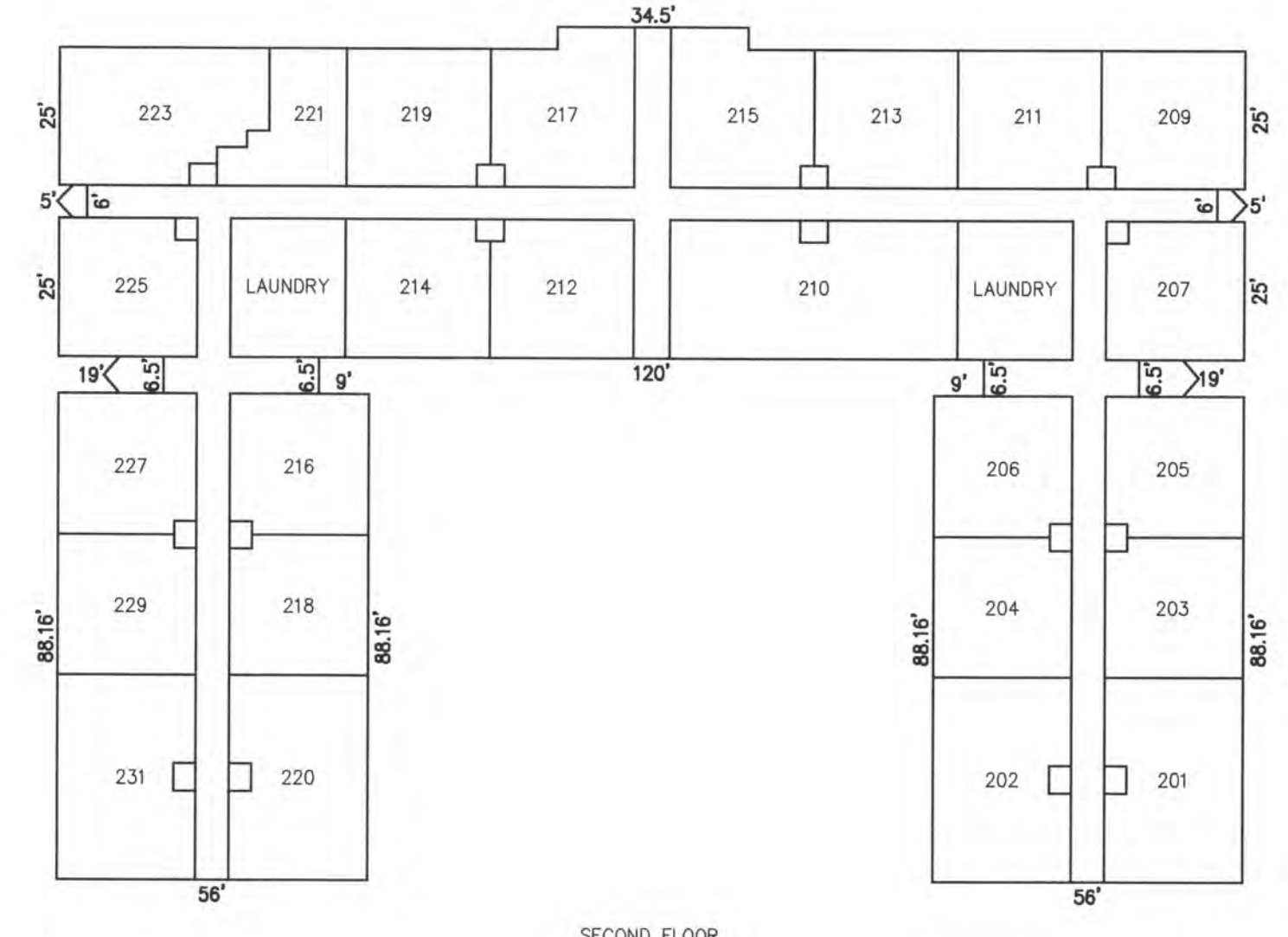
UNIT NO.	LOT NO.
101	C-110.101
102	C-110.102
103	C-110.103
104	C-110.104
105	C-110.105
106	C-110.106
107	C-110.107
108	C-110.108
109	C-110.109
110	C-110.110
111	C-110.111
112	C-110.112
113	C-110.113
114	C-110.114
115	C-110.115
116	C-110.116
117	C-110.117
118	C-110.118
119	C-110.119
120	C-110.120
121	C-110.121
123	C-110.123
125	C-110.125
127	C-110.127
129	C-110.129
131	C-110.131
201	C-110.201
202	C-110.202
203	C-110.203
204	C-110.204
205	C-110.205
206	C-110.206
207	C-110.207
209	C-110.209
210	C-110.210
211	C-110.211
212	C-110.212
213	C-110.213
214	C-110.214
215	C-110.215
216	C-110.216
217	C-110.217
218	C-110.218
219	C-110.219
220	C-110.220
221	C-110.221
223	C-110.223
225	C-110.225
227	C-110.227
229	C-110.229
231	C-110.231
301	C-110.301
302	C-110.302
303	C-110.303
304	C-110.304
305	C-110.305
306	C-110.306
307	C-110.307
309	C-110.309
310	C-110.310
311	C-110.311
313	C-110.313
314	C-110.314
315	C-110.315
316	C-110.316
317	C-110.317
318	C-110.318
319	C-110.319
320	C-110.320
321	C-110.321
323	C-110.323
325	C-110.325
327	C-110.327
329	C-110.329
331	C-110.331

NOTE: DIMENSIONS AND SQUARE FOOTAGE ARE TYPICAL FOR SIMILAR UNITS

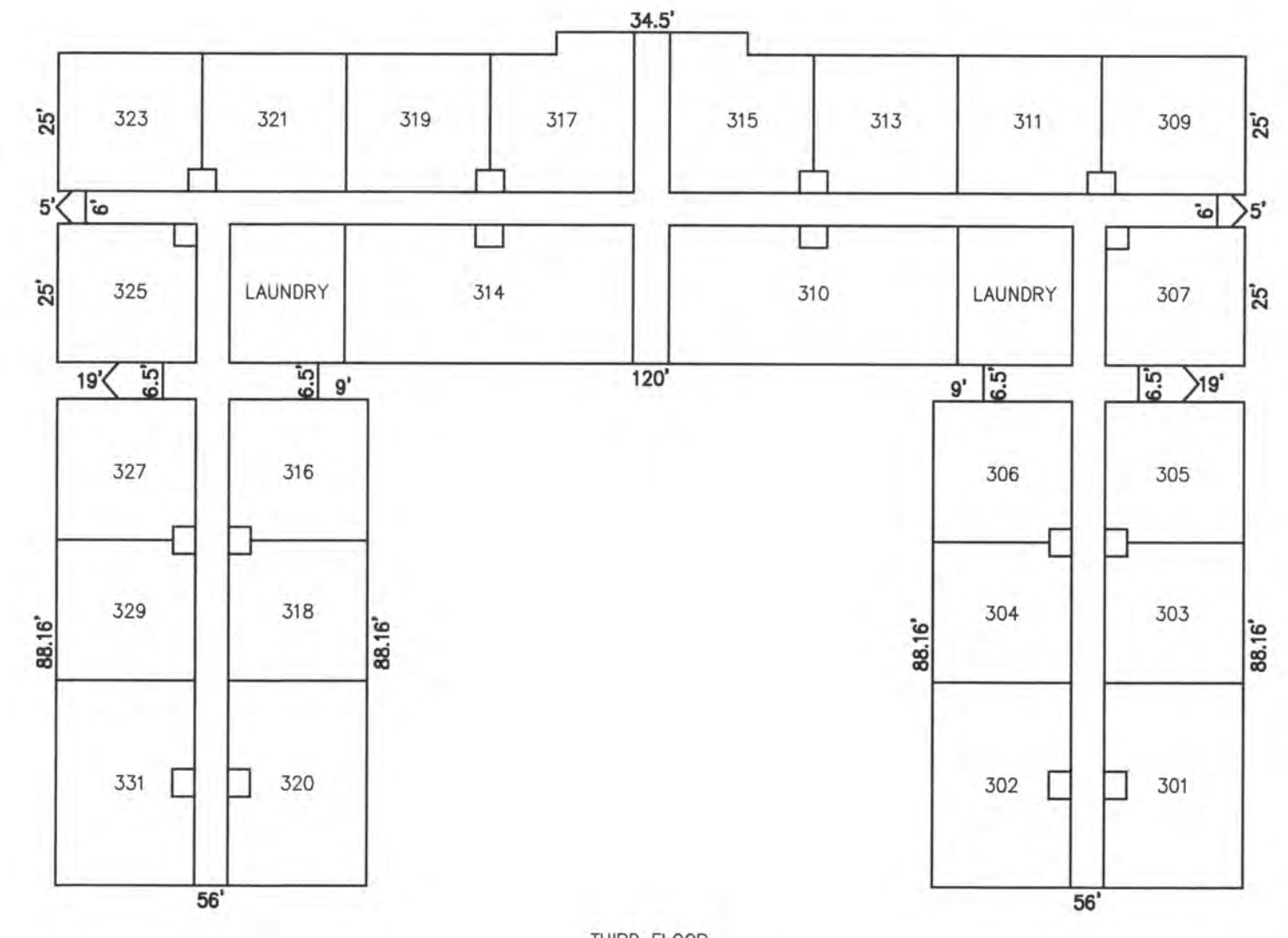
**DETAILS**  
SCALE: 1"=30'



FIRST FLOOR



SECOND FLOOR



THIRD FLOOR

**DETAILS**  
SCALE: 1"=30'

**CONDOMINIUM DETAILS AND DIMENSIONS**  
**BLOCK 27.01, LOT 110**  
**SEE PLATE 23**

"THIS TAX MAP PLATE HAS BEEN DIGITALLY DRAWN USING COMPUTER-AIDED DRAFTING/DESIGN (CADD) & COORDINATE GEOMETRY (COGO). IT IS BASED ON THE ORIGINAL DIGITALLY DRAWN TAX MAP PLATE BEARING THE OFFICIAL NEW JERSEY DIVISION TAXATION APPROVAL STAMP WITH APPROVAL DATE 6-3-2005 SERIAL NUMBER 846 AND SIGNATURES OF SIGNERS THOMAS J. REILLY, CHIEF LOCAL PROPERTY FIELD ASSISTANCE, SANTO C. DIDONATO, SUPERVISING FIELD REPRESENTATIVE. THE ORIGINAL DIGITALLY DRAWN TAX MAP PLATE WITH THE OFFICIAL APPROVAL STAMP IS ON FILE WITH REMINGTON, VERNICK & WALBERG ENGINEERS."

**TAX MAP**  
**CITY OF MARGATE**  
ATLANTIC COUNTY NEW JERSEY  
SCALE: AS NOTED DATE: 1-30-2004

**CRAIG F. REMINGTON LAND SURVEYOR LIC. NO. 23924**

**REMICONTON, VERNICK & WALBERG ENGINEERS**  
24 GA 28048700  
845 N MAIN STREET, PLEASANTVILLE, N.J. 08232  
(609) 645-7100, FAX (609) 645-7076  
WEB SITE ADDRESS: WWW.RVE.COM