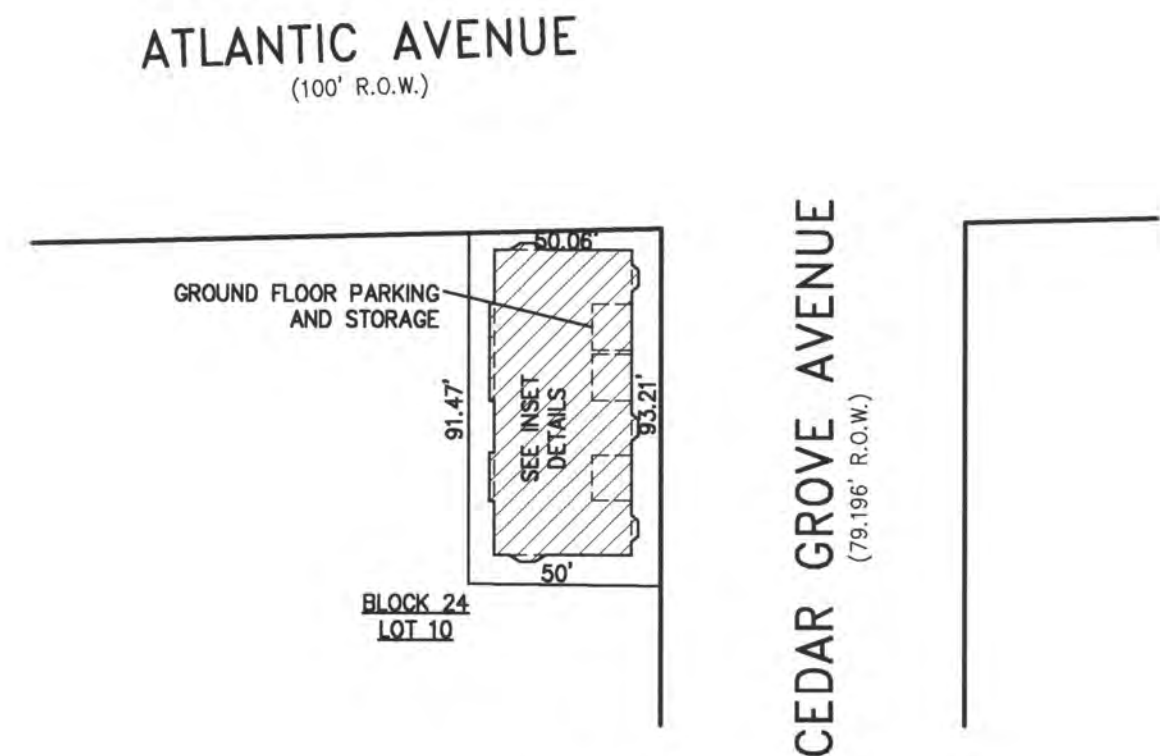
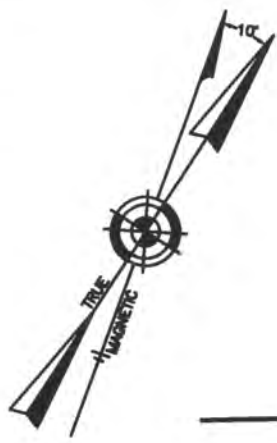
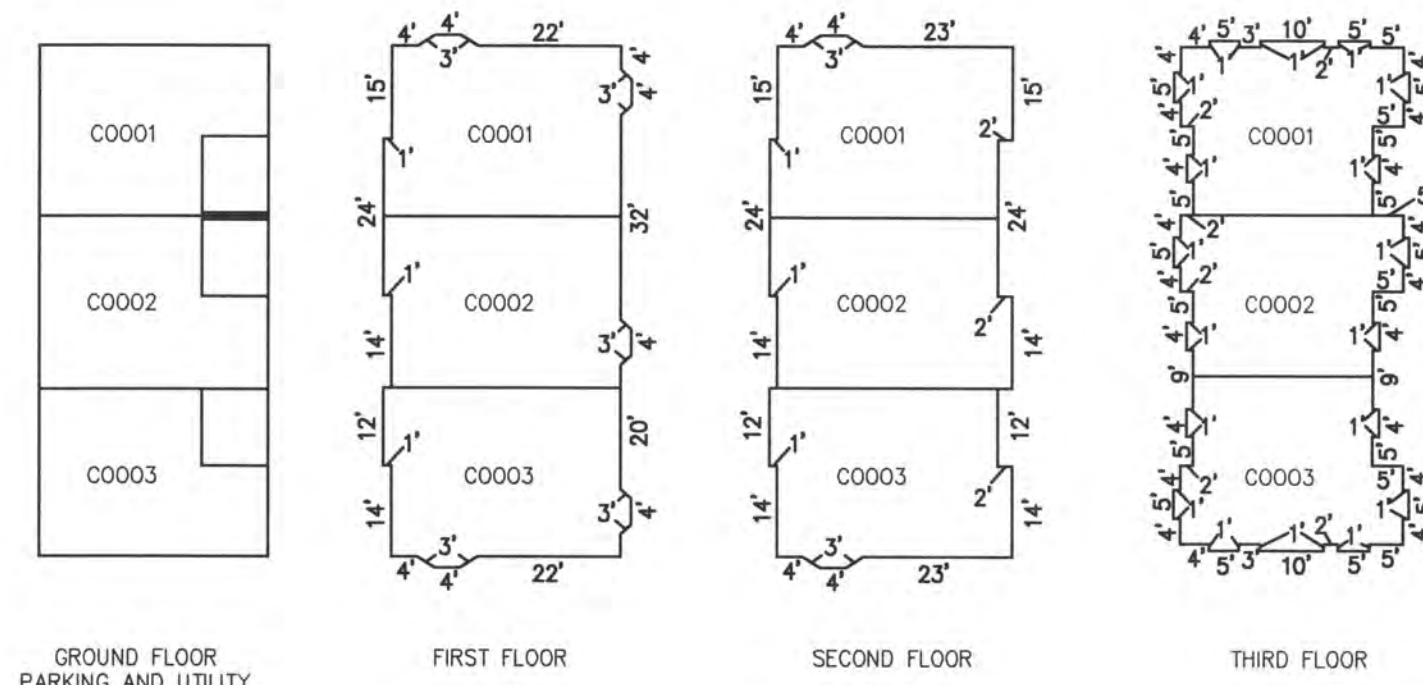


REVISIONS	



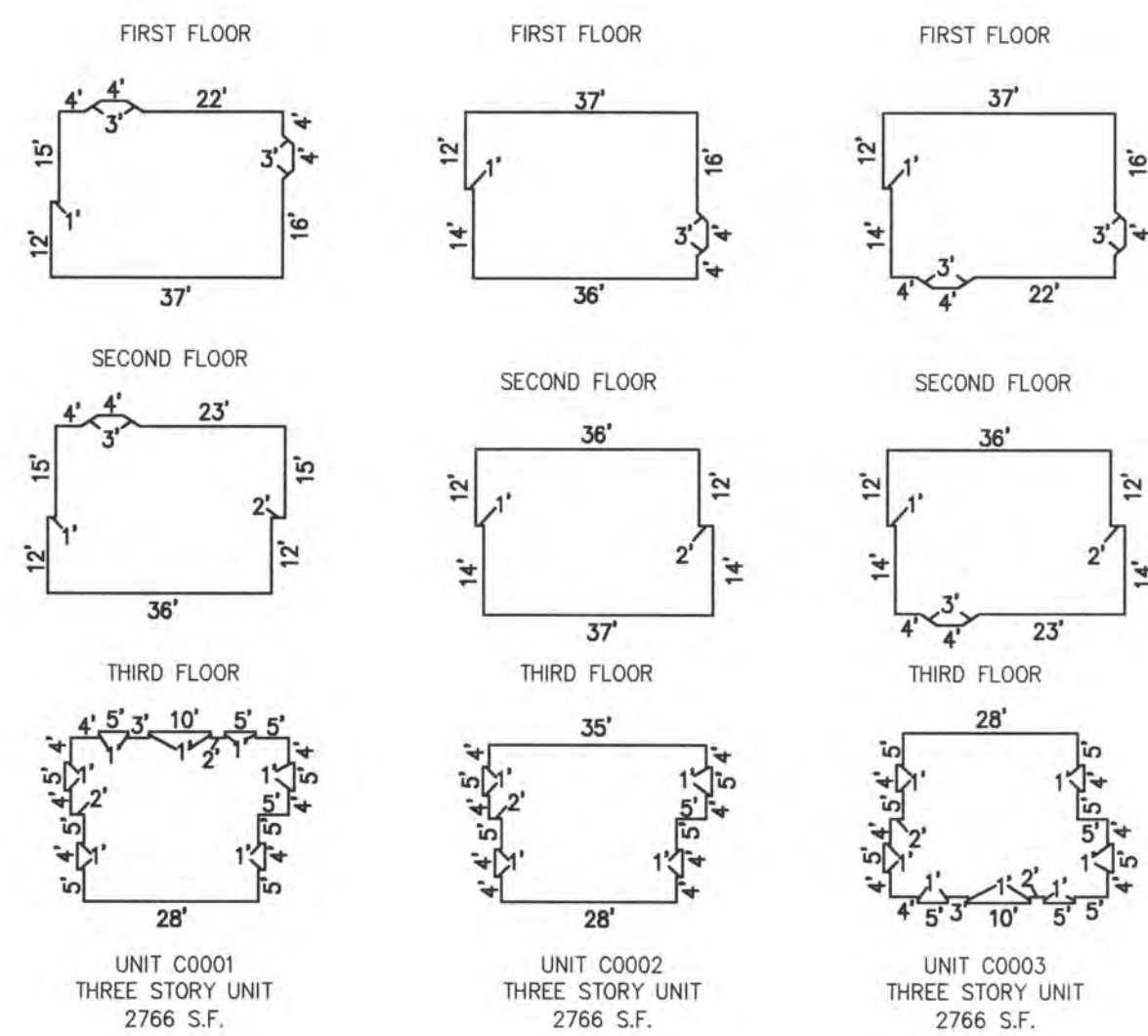
PLAN
SCALE: 1"=50'

BLOCK 24
THREE STORY



UNIT NO.	LOT NO.
C0001	C-01
C0002	C-02
C0003	C-03

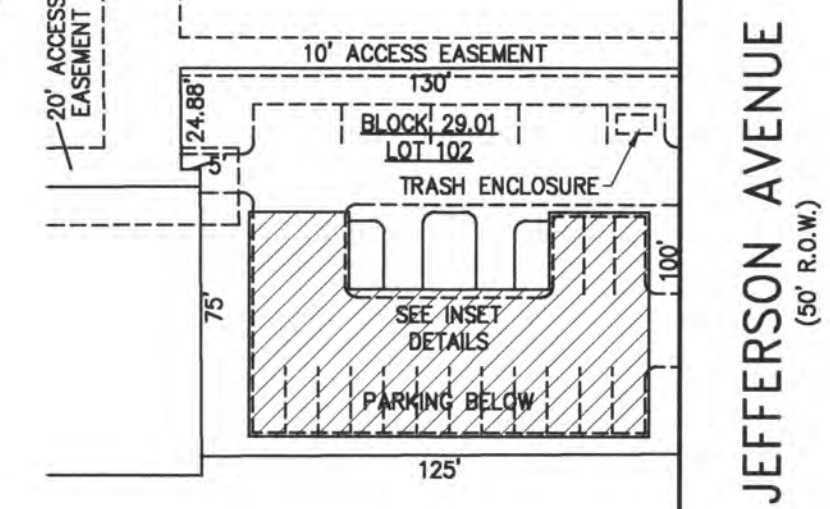
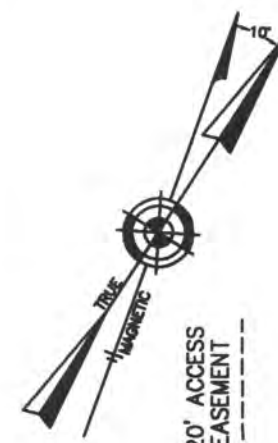
DETAILS
SCALE: 1"=30'



NOTE: DIMENSIONS AND SQUARE FOOTAGE ARE TYPICAL FOR SIMILAR UNITS

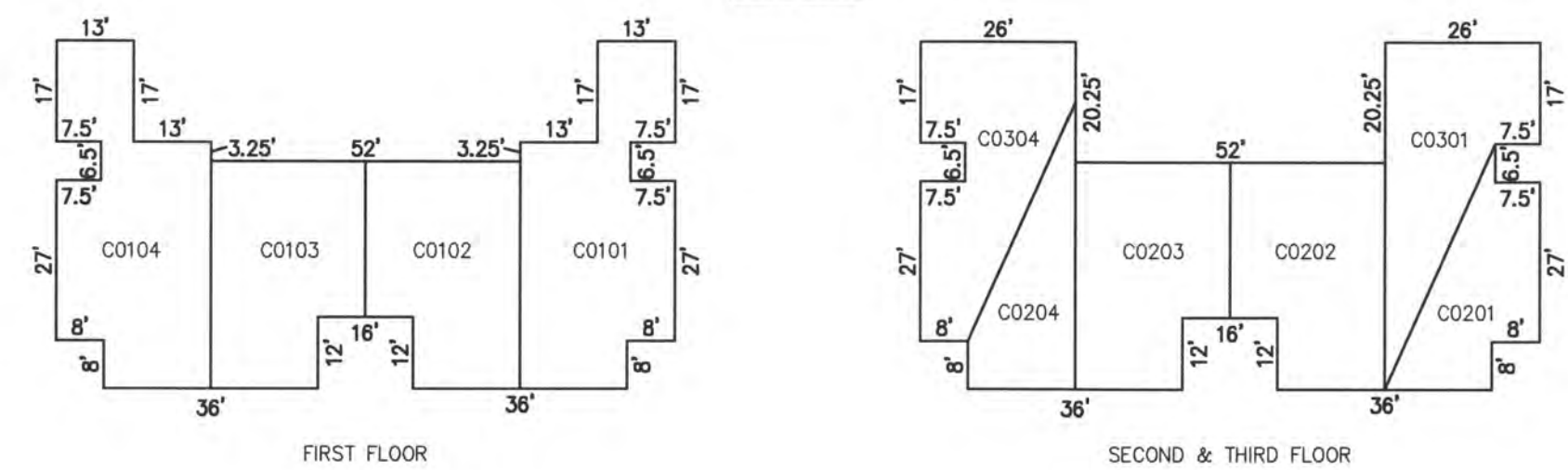
DETAILS
SCALE: 1"=30'

BLOCK 24, LOT 10
LA VELA CONDOMINIUM
9100 ATLANTIC AVENUE
INSET "PPPP"

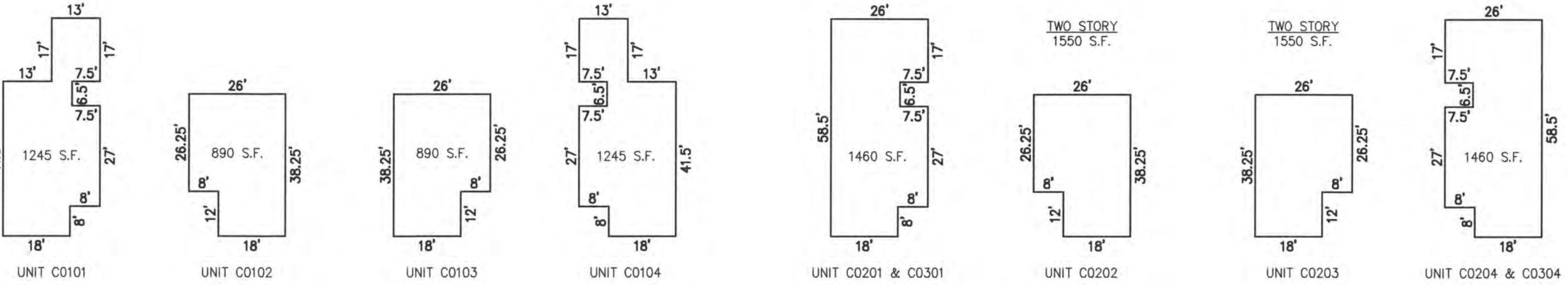


PLAN
SCALE: 1"=50'

BLOCK 29.01
THREE STORY



DETAILS
SCALE: 1"=30'



NOTE: DIMENSIONS AND SQUARE FOOTAGE ARE TYPICAL FOR SIMILAR UNITS

DETAILS
SCALE: 1"=30'

UNIT NO.	LOT NO.
C0101	C-101
C0102	C-102
C0103	C-103
C0104	C-104
C0201	C-201
C0202	C-202
C0203	C-203
C0204	C-204
C0301	C-301
C0304	C-304

BLOCK 29.01, LOT 102
JEFFERSON BEACH HOUSE CONDOMINIUM
120 SOUTH JEFFERSON AVENUE
INSET "O"

CONDOMINIUM DETAILS AND DIMENSIONS
BLOCK 24, LOT 10
BLOCK 29.01, LOT 102
SEE PLATE 23

"THIS TAX MAP PLATE HAS BEEN DIGITALLY DRAWN USING COMPUTER-AIDED DRAFTING/DESIGN (CADD) & COORDINATE GEOMETRY (COGO). IT IS BASED ON THE ORIGINAL DIGITALLY DRAWN TAX MAP PLATE BEARING THE OFFICIAL NEW JERSEY DIVISION TAXATION APPROVAL STAMP WITH APPROVAL DATE 6-3-2005 SERIAL NUMBER 846 AND SIGNATURES OF SIGNERS: THOMAS J. REILLY, CHIEF, LOCAL PROPERTY, FIELD ASSISTANCE; SANTO C. DIDONATO, SUPERVISING FIELD REPRESENTATIVE. THE ORIGINAL DIGITALLY DRAWN TAX MAP PLATE WITH THE OFFICIAL APPROVAL STAMP IS ON FILE WITH REMINGTON, VERNICK & WALBERG ENGINEERS."

TAX MAP
CITY OF MARGATE

ATLANTIC COUNTY NEW JERSEY
SCALE: AS NOTED DATE: 1-30-2004

CRAIG F. REMINGTON LAND SURVEYOR LIC. NO. 23924



REMINGTON, VERNICK & WALBERG ENGINEERS
24 CA 28048700
845 N MAN STREET, PLEASANTVILLE, NJ 08232
(609) 645-7100 FAX (609) 645-7076
WEB SITE ADDRESS: WWW.RVW.COM