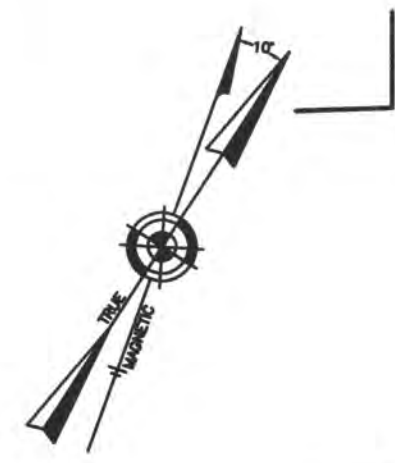
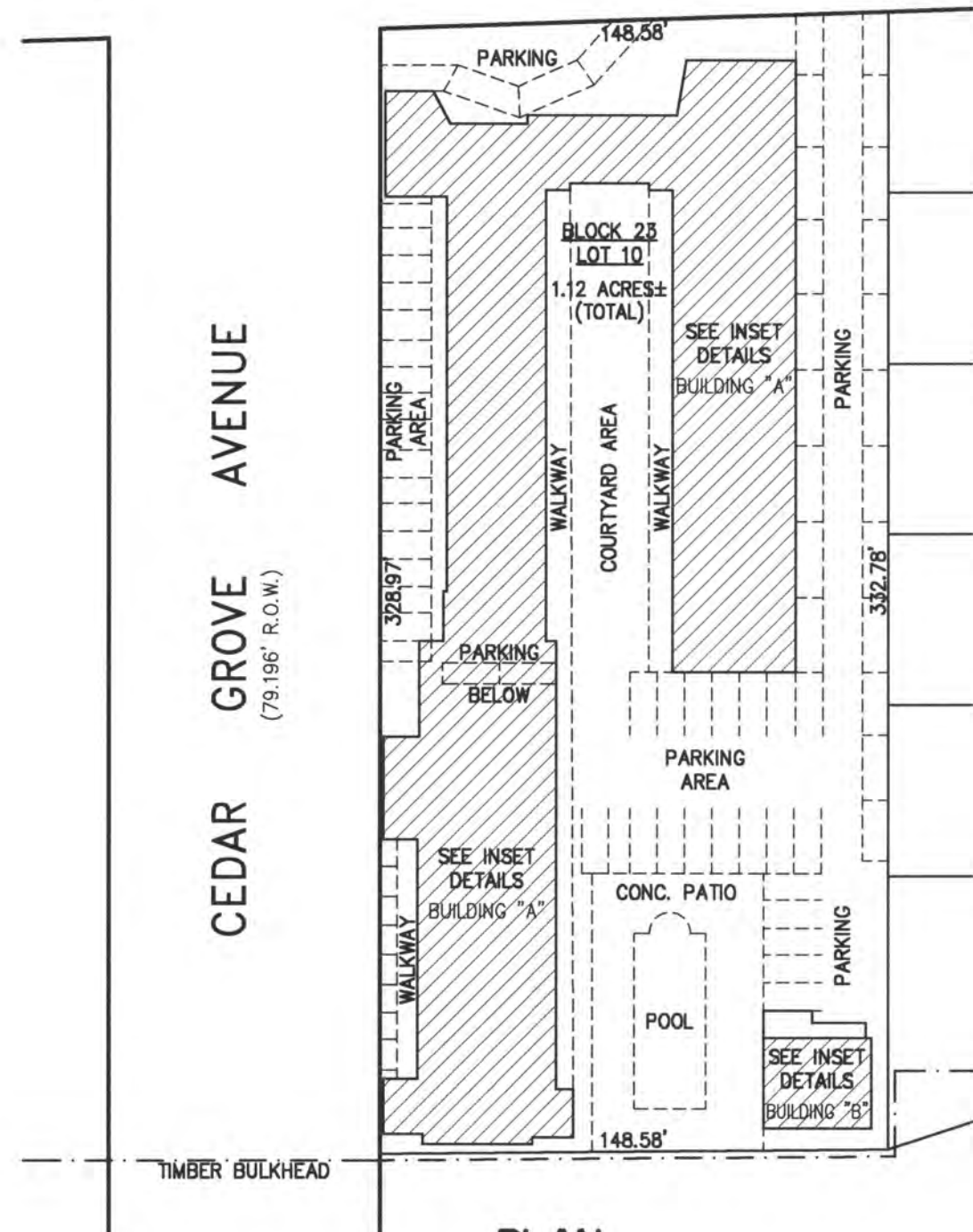


REVISIONS



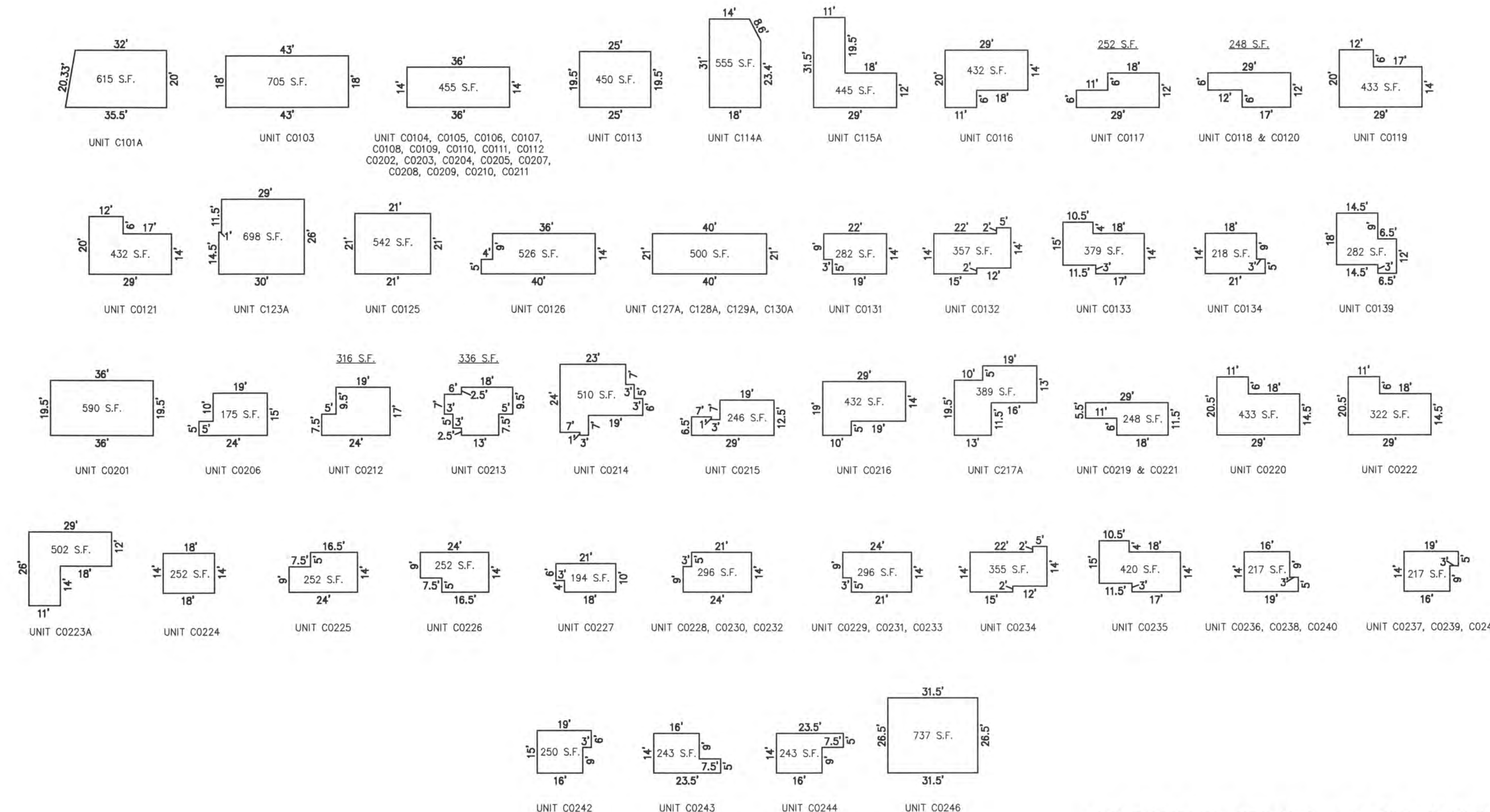
ATLANTIC AVENUE
(100 R.O.W.)

CEDAR GROVE AVENUE
(79/196' R.O.W.)



PLAN
SCALE: 1"=50'

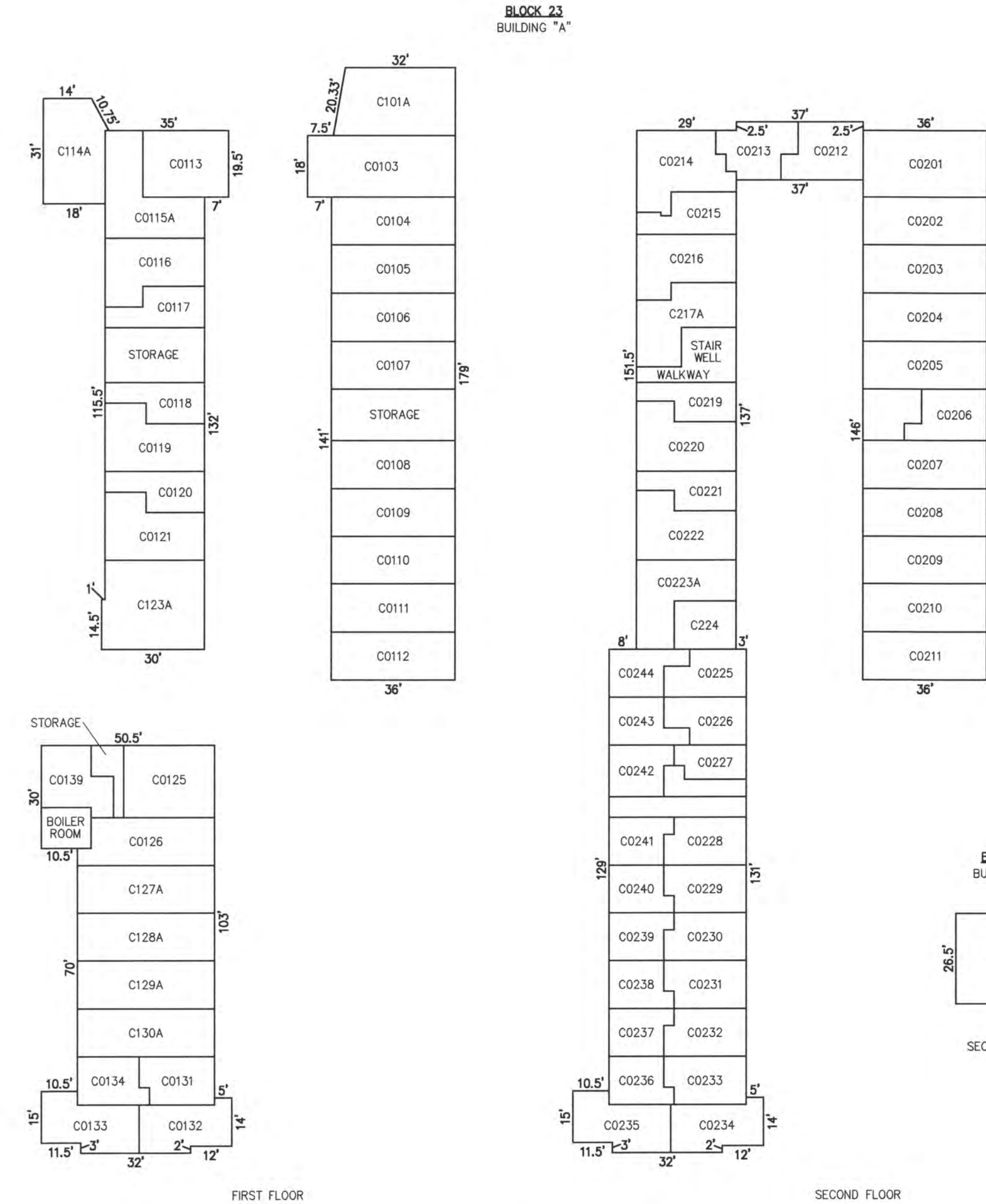
BLOCK 23, LOT 10
WHITE SANDS CONDOMINIUM
9010 ATLANTIC AVENUE
INSET "F"



NOTE: DIMENSIONS AND SQUARE FOOTAGE ARE TYPICAL FOR SIMILAR UNITS

DETAILS
SCALE: 1"=30'

CONDOMINIUM DETAILS AND DIMENSIONS
BLOCK 23, LOT 10
SEE PLATE 22

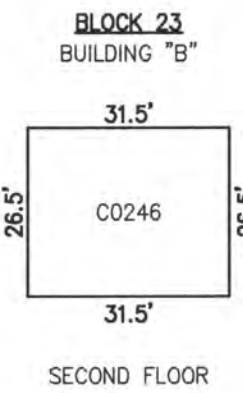


FIRST FLOOR

SECOND FLOOR

DETAILS
SCALE: 1"=30'

UNIT NO.	LOT NO.
C0101A	C-101.01
C0103	C-103
C0104	C-104
C0105	C-105
C0106	C-106
C0107	C-107
C0108	C-108
C0109	C-109
C0110	C-110
C0111	C-111
C0112	C-112
C0113	C-113
C0114A	C-114.01
C0115A	C-115.01
C0116	C-116
C0117	C-117
C0118	C-118
C0119	C-119
C0120	C-120
C0121	C-121
C0123A	C-123.01
C0125	C-125
C0126	C-126
C0127A	C-127.01
C0128A	C-128.01
C0129A	C-129.01
C0130A	C-130.01
C0131	C-131
C0132	C-132
C0133	C-133
C0134	C-134
C0139	C-139
C0201	C-201
C0202	C-202
C0203	C-203
C0204	C-204
C0205	C-205
C0206	C-206
C0207	C-207
C0208	C-208
C0209	C-209
C0210	C-210
C0211	C-211
C0212	C-212
C0213	C-213
C0214	C-214
C0215	C-215
C0216	C-216
C0217A	C-217.01
C0219	C-219
C0220	C-220
C0221	C-221
C0222	C-222
C0223A	C-223.01
C0224	C-224
C0225	C-225
C0226	C-226
C0227	C-227
C0228	C-228
C0229	C-229
C0230	C-230
C0231	C-231
C0232	C-232
C0233	C-233
C0234	C-234
C0235	C-235
C0236	C-236
C0237	C-237
C0238	C-238
C0239	C-239
C0240	C-240
C0241	C-241
C0242	C-242
C0243	C-243
C0244	C-244
C0246	C-246



SECOND FLOOR

"THIS TAX MAP PLATE HAS BEEN DIGITALLY DRAWN USING COMPUTER-AIDED DRAFTING/DESIGN (CADD) & COORDINATE GEOMETRY (COGO). IT IS BASED ON THE ORIGINAL DIGITALLY DRAWN TAX MAP PLATE BEARING THE OFFICIAL NEW JERSEY DIVISION TAXATION APPROVAL STAMP WITH APPROVAL DATE 6-3-2005 SERIAL NUMBER 846 AND SIGNATURES OF SIGNERS' THOMAS J. REILLY, CHIEF, LOCAL PROPERTY, FIELD ASSISTANCE. SANTO C. DIDONATO, SUPERVISING FIELD REPRESENTATIVE. THE ORIGINAL DIGITALLY DRAWN TAX MAP PLATE WITH THE OFFICIAL APPROVAL STAMP IS ON FILE WITH REMINGTON, VERNICK & WALBERG ENGINEERS."

TAX MAP
CITY OF MARGATE
ATLANTIC COUNTY NEW JERSEY

SCALE: AS NOTED DATE: 1-30-2004

CRAIG F. REMINGTON LAND SURVEYOR LIC. NO. 23924



REMINGTON, VERNICK & WALBERG ENGINEERS
24 GA 28048700
845 N. MAIN STREET, PLEASANTVILLE, N.J. 08232
(609) 645-700, FAX (609) 645-7076
WEB SITE ADDRESS: WWW.RVE.COM