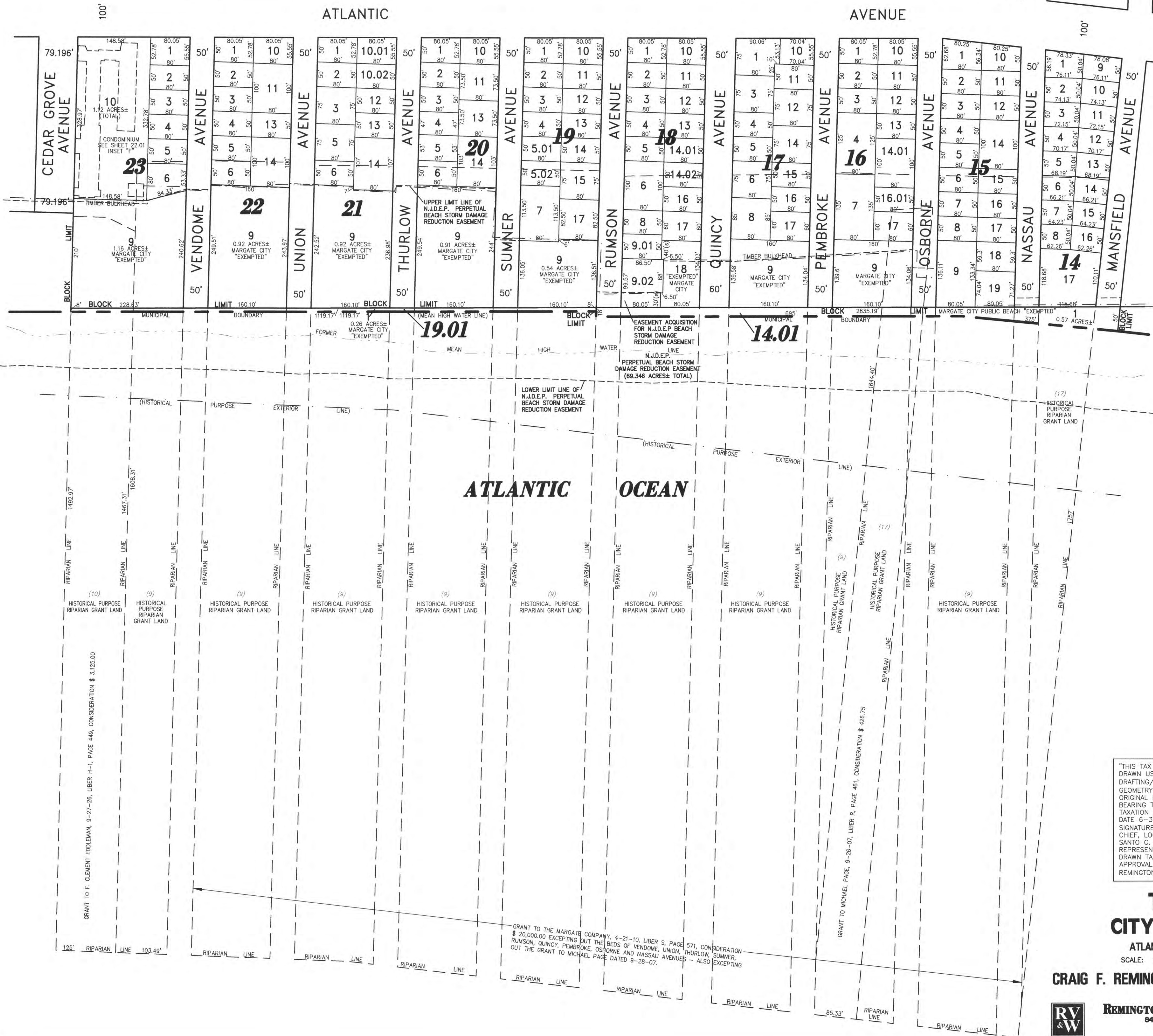
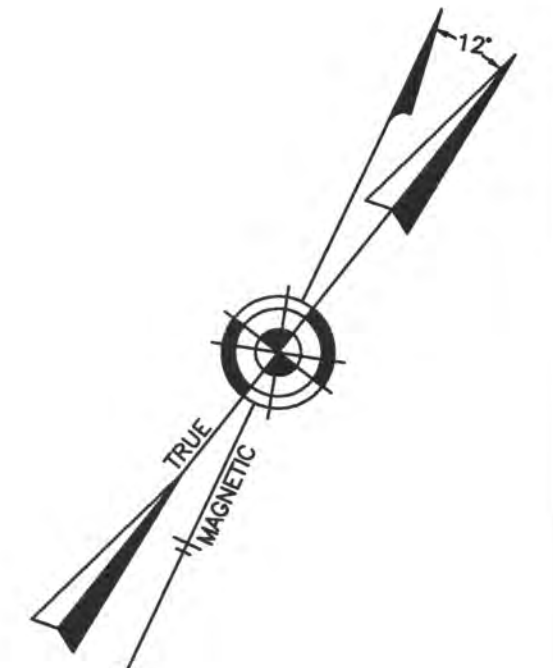


REVISIONS		
4-13-2007	CRAIG F. REMINGTON	23924
8-31-2009	CRAIG F. REMINGTON	23924
6-14-2013	CRAIG F. REMINGTON	23924
4-24-2014	CRAIG F. REMINGTON	23924
1-20-2015	CHARLES E. ADAMSON	42627
1-30-2017	CHARLES E. ADAMSON	42627

SHEET 23

SHEET 21



GRANT TO F. CLEMENT EDDLEMAN, 9-27-26, LIBER H-1, PAGE 448, CONSIDERATION \$ 3,125.00

GRANT TO THE MARGATE COMPANY, 4-21-10, LIBER S, PAGE 571, CONSIDERATION \$ 20,000.00 EXCEPTING OUT THE BEDS OF VENDOME, UNION, THURLOW, SUMMER, RUMSON, QUINCY, PEMBROKE, OSBORNE AND NASSAU AVENUES - ALSO EXCEPTING OUT THE GRANT TO MICHAEL PACE DATED 9-28-07.

GRANT TO MICHAEL PACE, 9-26-07, LIBER R, PAGE 481, CONSIDERATION \$ 486.75

"THIS TAX MAP PLATE HAS BEEN DIGITALLY DRAWN USING COMPUTER-AIDED DRAFTING/DESIGN (CADD) & COORDINATE GEOMETRY (COGO). IT IS BASED ON THE ORIGINAL DIGITALLY DRAWN TAX MAP PLATE BEARING THE OFFICIAL NEW JERSEY DIVISION TAXATION APPROVAL STAMP WITH APPROVAL DATE 6-3-2005 SERIAL NUMBER 846 AND SIGNATURES OF SIGNERS' THOMAS J. REILLY, CHIEF, LOCAL PROPERTY, FIELD ASSISTANCE. SANTO C. DIDONATO, SUPERVISING FIELD REPRESENTATIVE. THE ORIGINAL DIGITALLY DRAWN TAX MAP PLATE WITH THE OFFICIAL APPROVAL STAMP IS ON FILE WITH REMINGTON, VERNICK & WALBERG ENGINEERS."

TAX MAP
CITY OF MARGATE

ATLANTIC COUNTY NEW JERSEY
SCALE: 1" = 100' DATE: 11-01-2003

CRAIG F. REMINGTON LAND SURVEYOR LIC. NO. 23924



REMINGTON, VERNICK & WALBERG ENGINEERS
24 GA 28048700
845 N. MAIN STREET, PLEASANTVILLE, N.J. 08232
(609) 645-7000, FAX (609) 645-7076
WEB SITE ADDRESS: WWW.RVW.COM