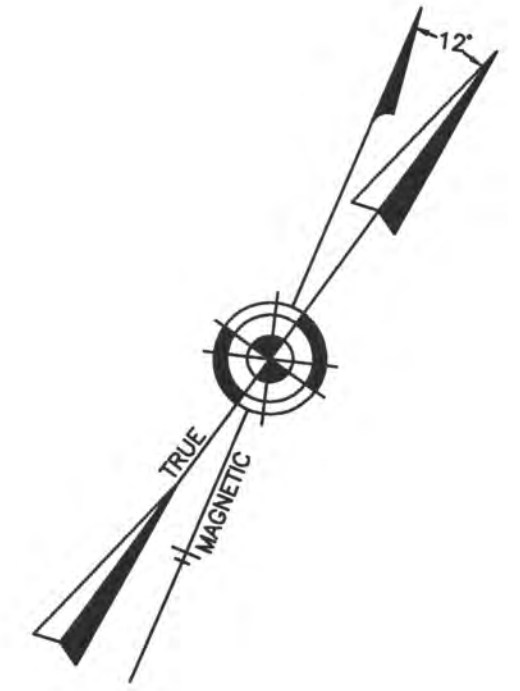


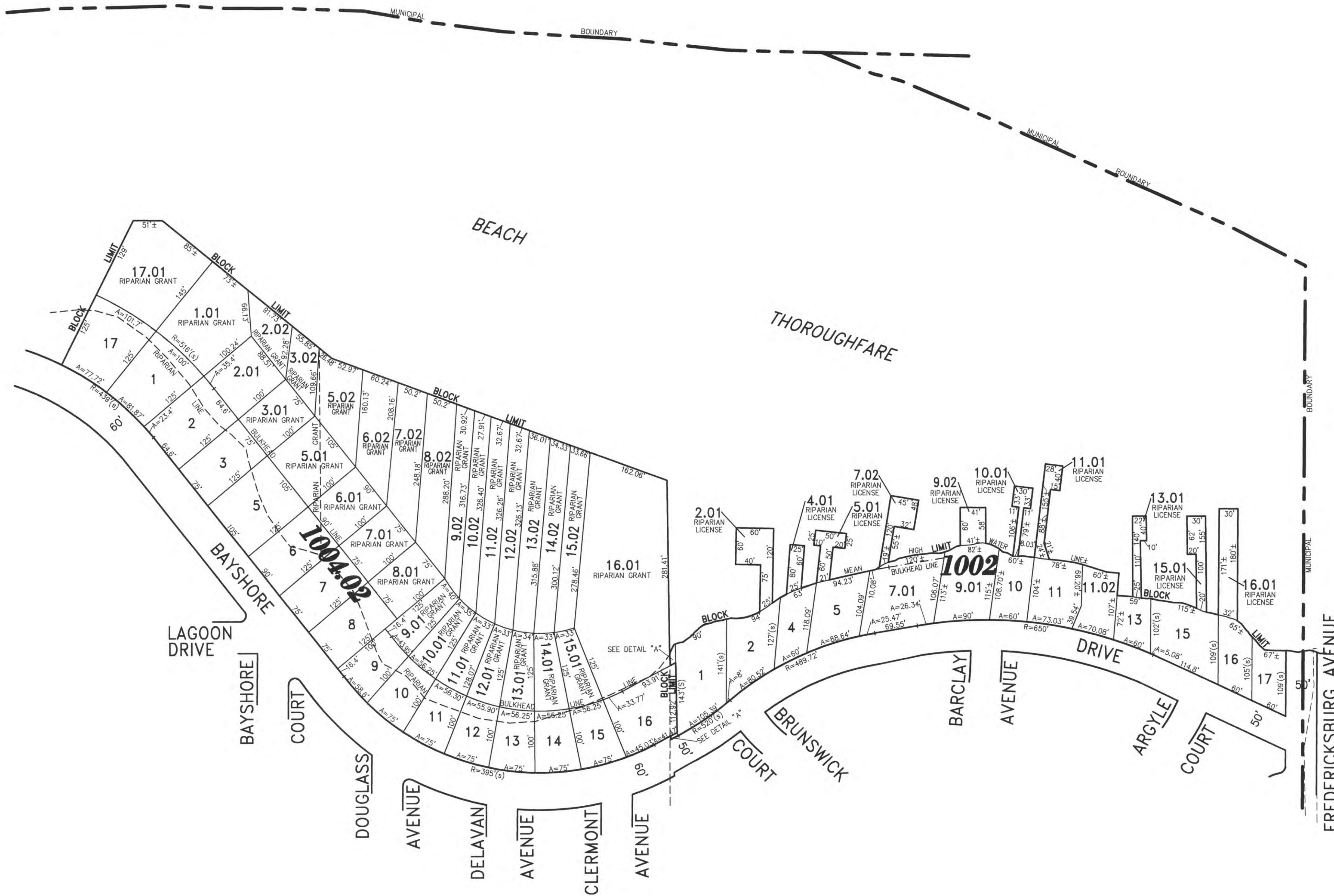
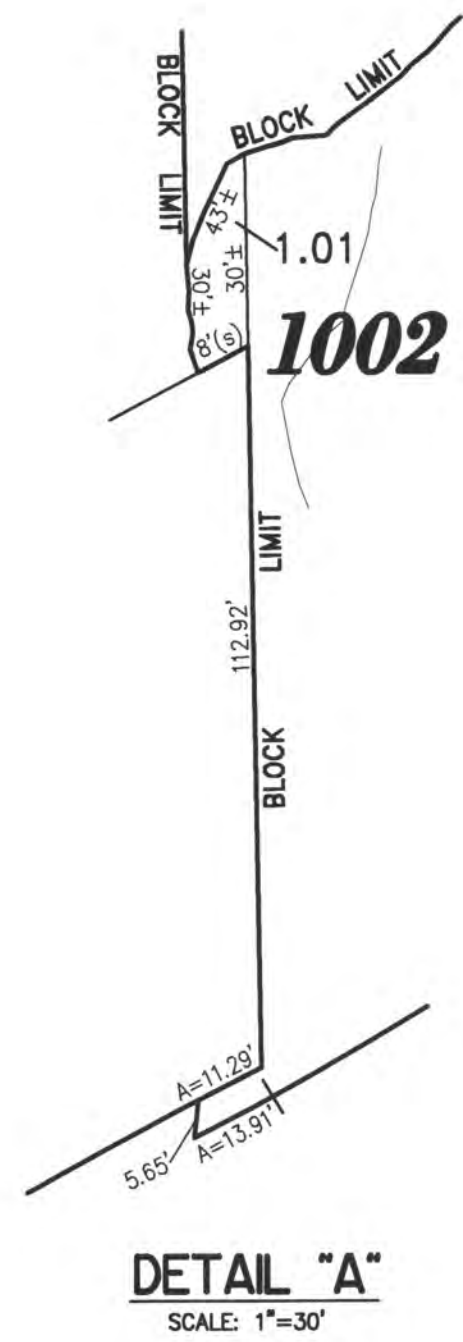
REVISIONS		
4-13-2007	CRAIG F. REMINGTON	23924
12-31-2010	CRAIG F. REMINGTON	23924
6-14-2013	CRAIG F. REMINGTON	23924



TOWNSHIP OF EGG HARBOR

SHEET 18

SHEET 16



CITY OF VENTNOR

TAX MAP
CITY OF MARGATE

ATLANTIC COUNTY NEW JERSEY
SCALE: 1" = 100' DATE: 11-01-2003

CRAIG F. REMINGTON LAND SURVEYOR LIC. NO. 23924

"THIS TAX MAP PLATE HAS BEEN DIGITALLY DRAWN USING COMPUTER-AIDED DRAFTING/DESIGN (CADD) & COORDINATE GEOMETRY (COGO). IT IS BASED ON THE ORIGINAL DIGITALLY DRAWN TAX MAP PLATE BEARING THE OFFICIAL NEW JERSEY DIVISION TAXATION APPROVAL STAMP WITH APPROVAL DATE 6-3-2005 SERIAL NUMBER 846 AND SIGNATURES OF SIGNERS: THOMAS J. REILLY, CHIEF, LOCAL PROPERTY, FIELD ASSISTANCE. SANTO C. DIDONATO, SUPERVISING FIELD REPRESENTATIVE. THE ORIGINAL DIGITALLY DRAWN TAX MAP PLATE WITH THE OFFICIAL APPROVAL STAMP IS ON FILE WITH REMINGTON, VERNICK & WALBERG ENGINEERS."



REMINGTON, VERNICK & WALBERG ENGINEERS
24 GA 28048700
845 N. MAN STREET, PLEASANTVILLE, NJ 08232
(609) 645-7000 FAX (609) 645-7076
WEB SITE ADDRESS: WWW.RVW.COM