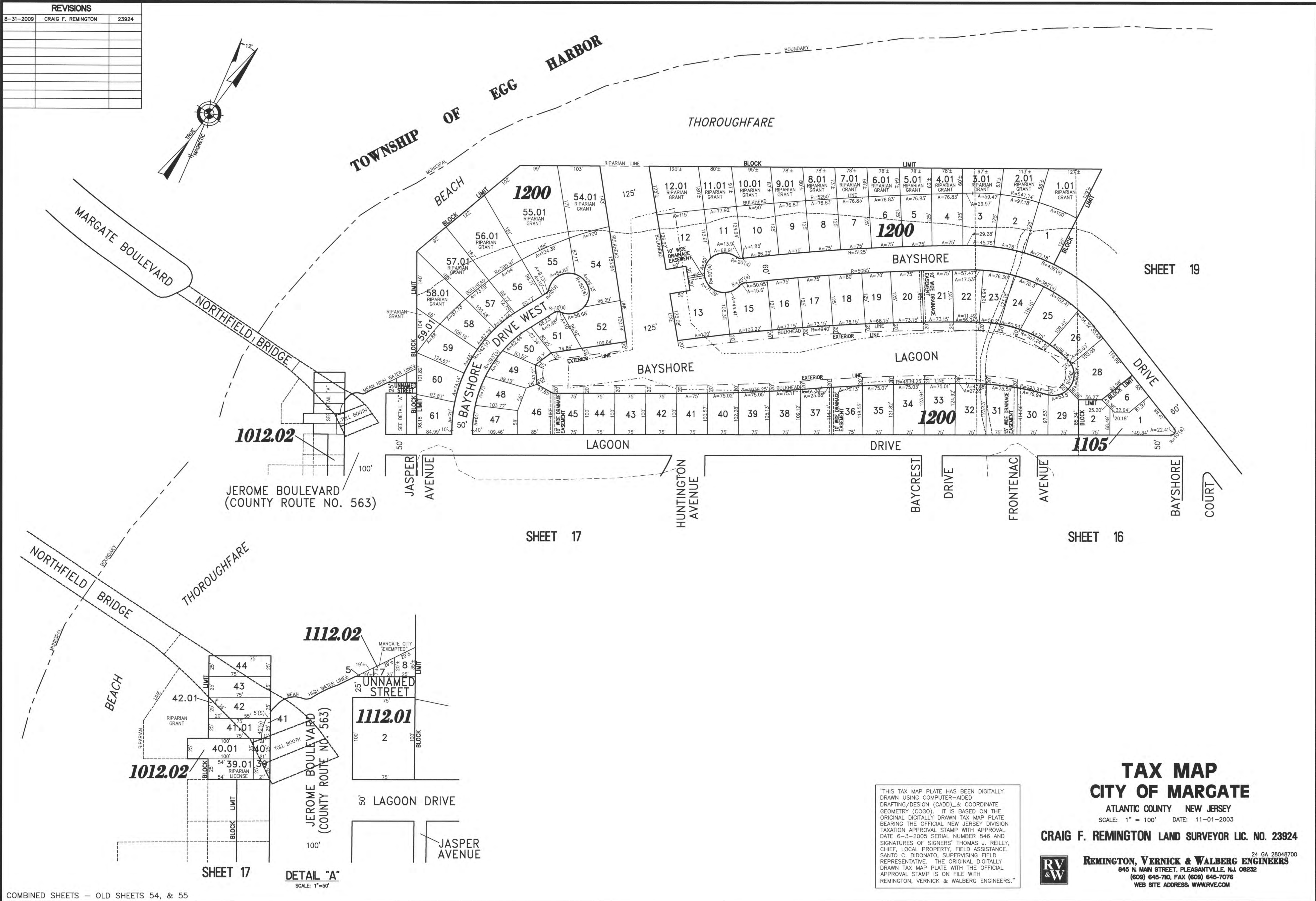
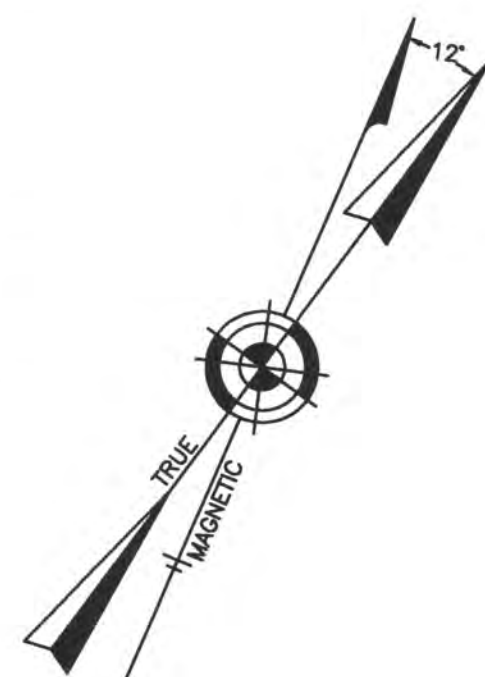


REVISIONS		
8-31-2009	CRAIG F. REMINGTON	23924



COMBINED SHEETS - OLD SHEETS 54, & 55

DETAIL "A"  
SCALE: 1"=50'

"THIS TAX MAP PLATE HAS BEEN DIGITALLY DRAWN USING COMPUTER-AIDED DRAFTING/DESIGN (CADD) & COORDINATE GEOMETRY (COCO). IT IS BASED ON THE ORIGINAL DIGITALLY DRAWN TAX MAP PLATE BEARING THE OFFICIAL NEW JERSEY DIVISION TAXATION APPROVAL STAMP WITH APPROVAL DATE 6-3-2005 SERIAL NUMBER 846 AND SIGNATURES OF SIGNERS' THOMAS J. REILLY, CHIEF, LOCAL PROPERTY, FIELD ASSISTANCE. SANTO C. DIDONATO, SUPERVISING FIELD REPRESENTATIVE. THE ORIGINAL DIGITALLY DRAWN TAX MAP PLATE WITH THE OFFICIAL APPROVAL STAMP IS ON FILE WITH REMINGTON, VERNICK & WALBERG ENGINEERS."



**TAX MAP**  
**CITY OF MARGATE**  
 ATLANTIC COUNTY NEW JERSEY  
 SCALE: 1" = 100' DATE: 11-01-2003  
**CRAIG F. REMINGTON LAND SURVEYOR LIC. NO. 23924**  
**REMINGTON, VERNICK & WALBERG ENGINEERS**  
 845 N. MAIN STREET, PLEASANTVILLE, N.J. 08232  
 (609) 645-7000, FAX (609) 645-7076  
 WEB SITE ADDRESS: WWW.RVW.COM