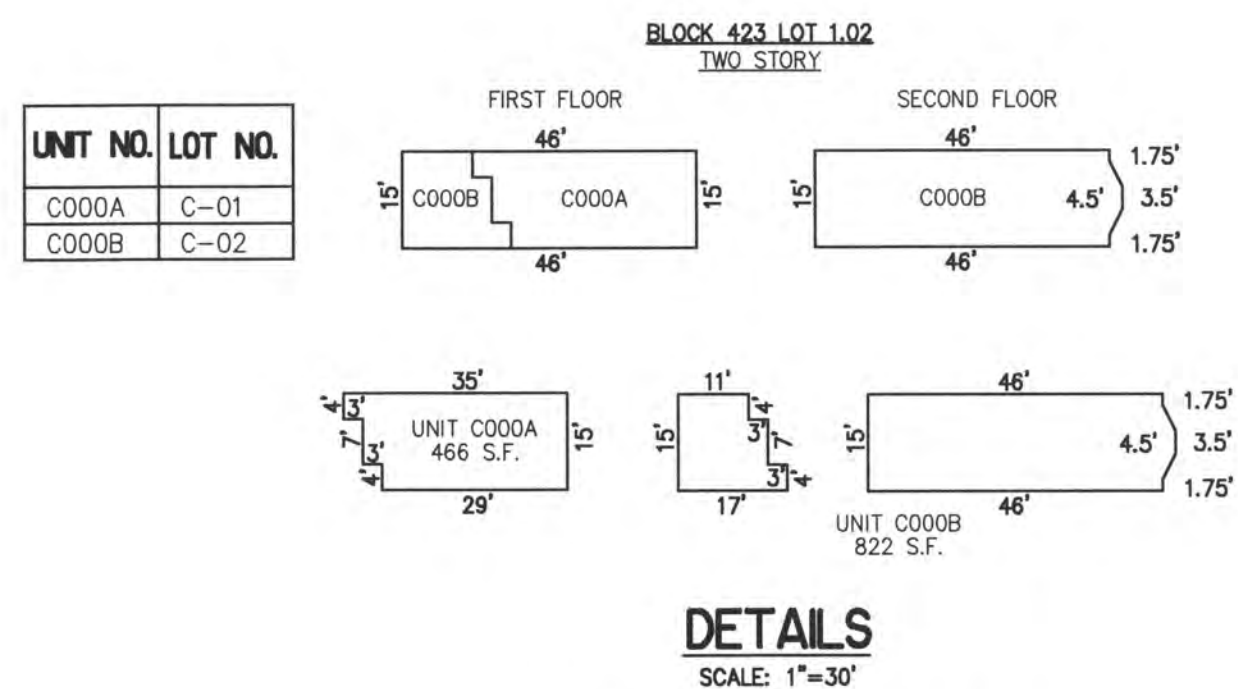
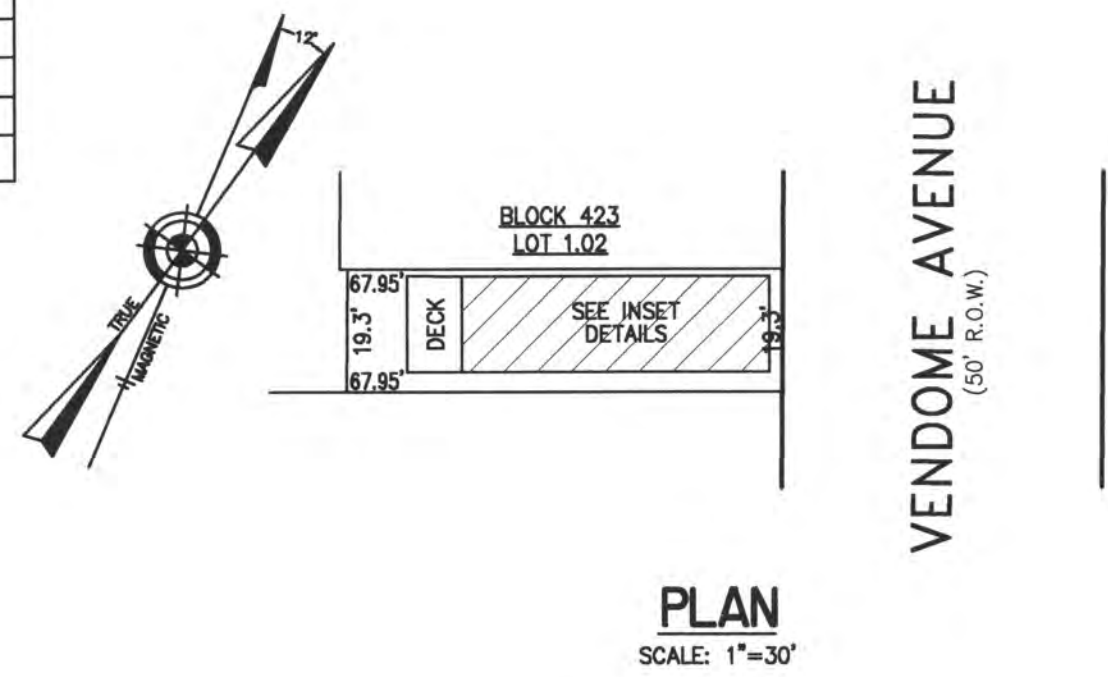
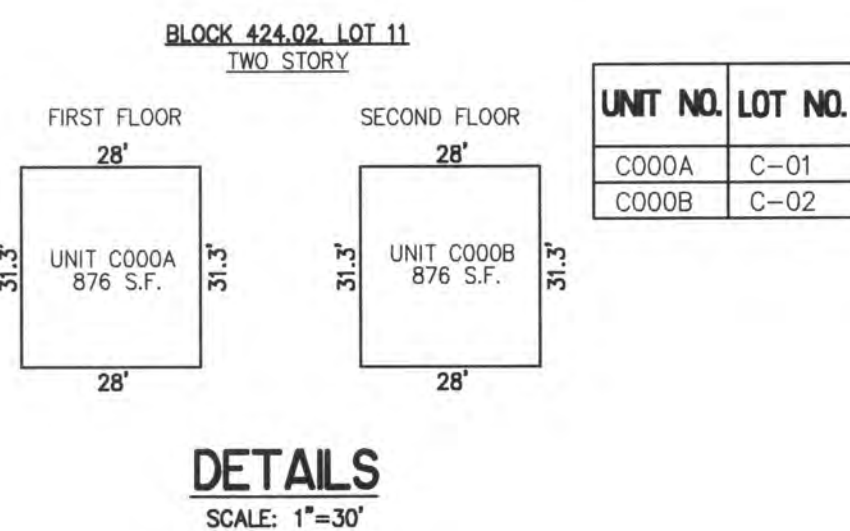
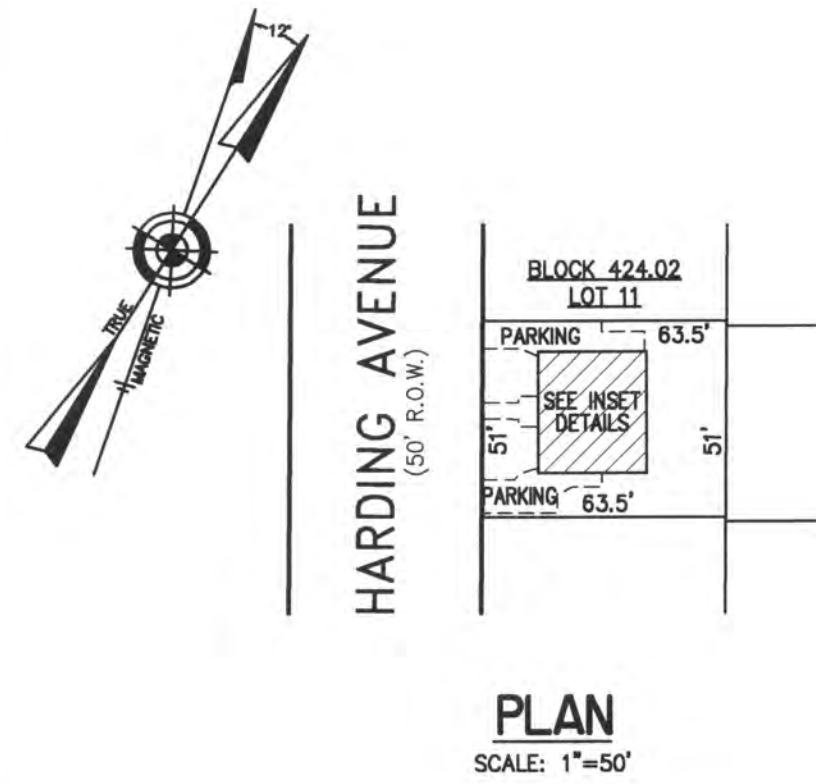


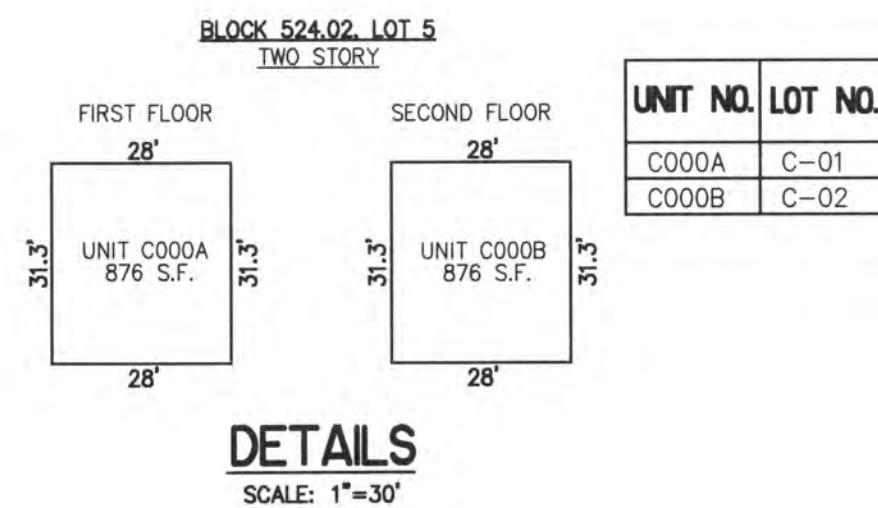
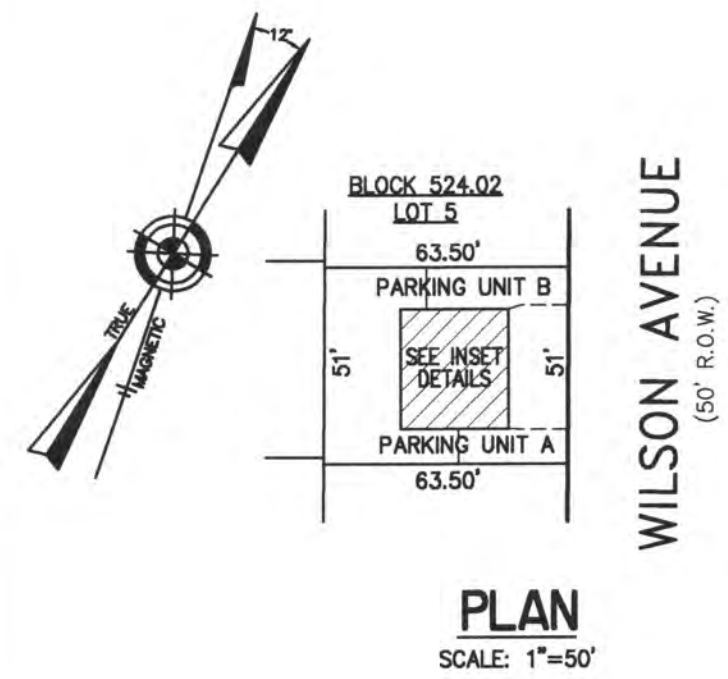
REVISIONS			
4-13-2007	CRAIG F. REMINGTON	23924	
8-31-2009	CRAIG F. REMINGTON	23924	
3-8-2012	CRAIG F. REMINGTON	23924	
4-24-2014	CRAIG F. REMINGTON	23924	
1-20-2015	CHARLES E. ADAMSON	42627	
1-30-2017	CHARLES E. ADAMSON	42627	



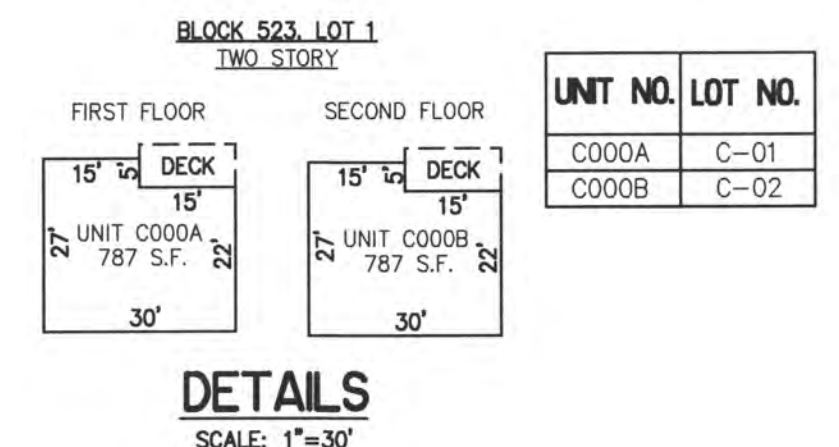
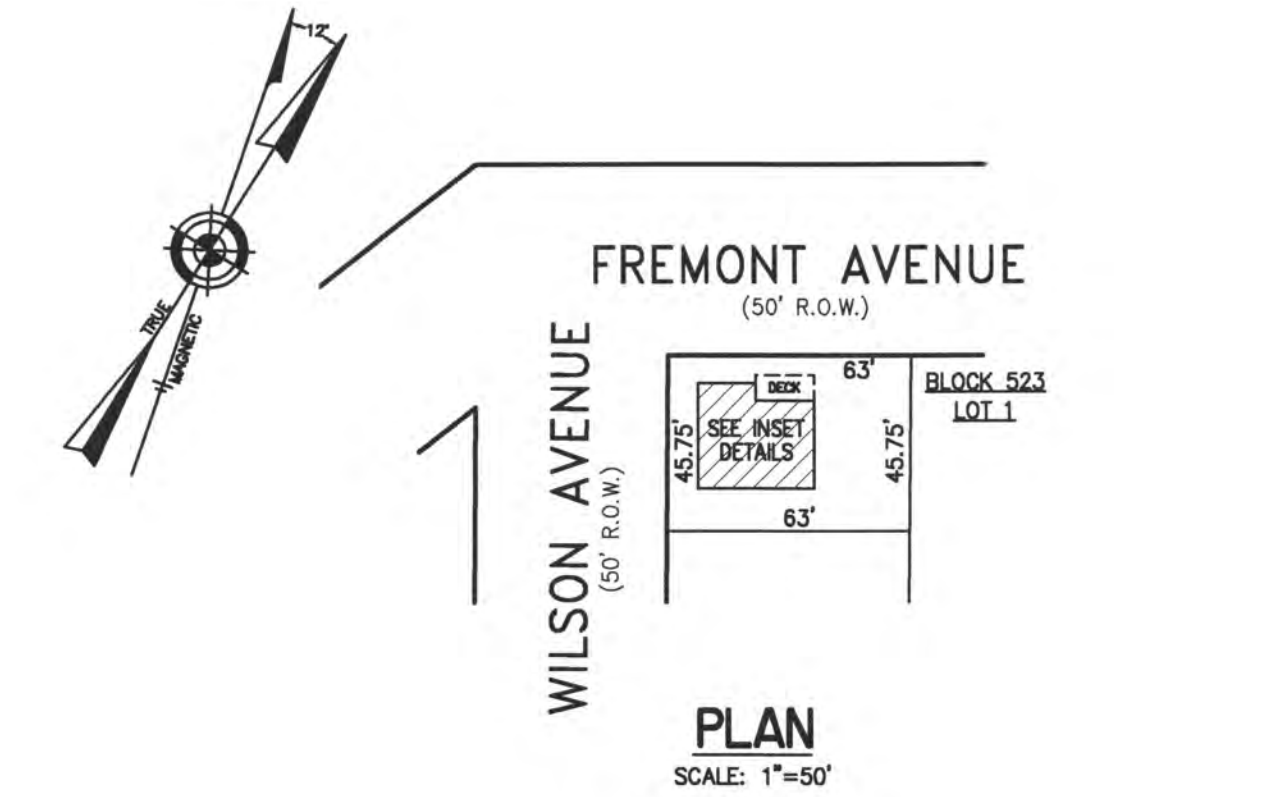
**BLOCK 423, LOT 1.02**  
226 NORTH VENDOME CONDOMINIUM  
226 NORTH VENDOME AVENUE  
INSET "A"



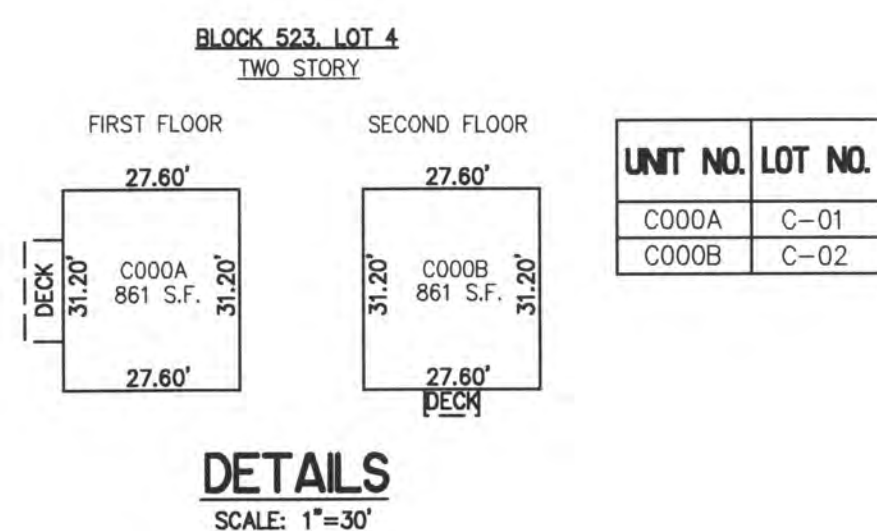
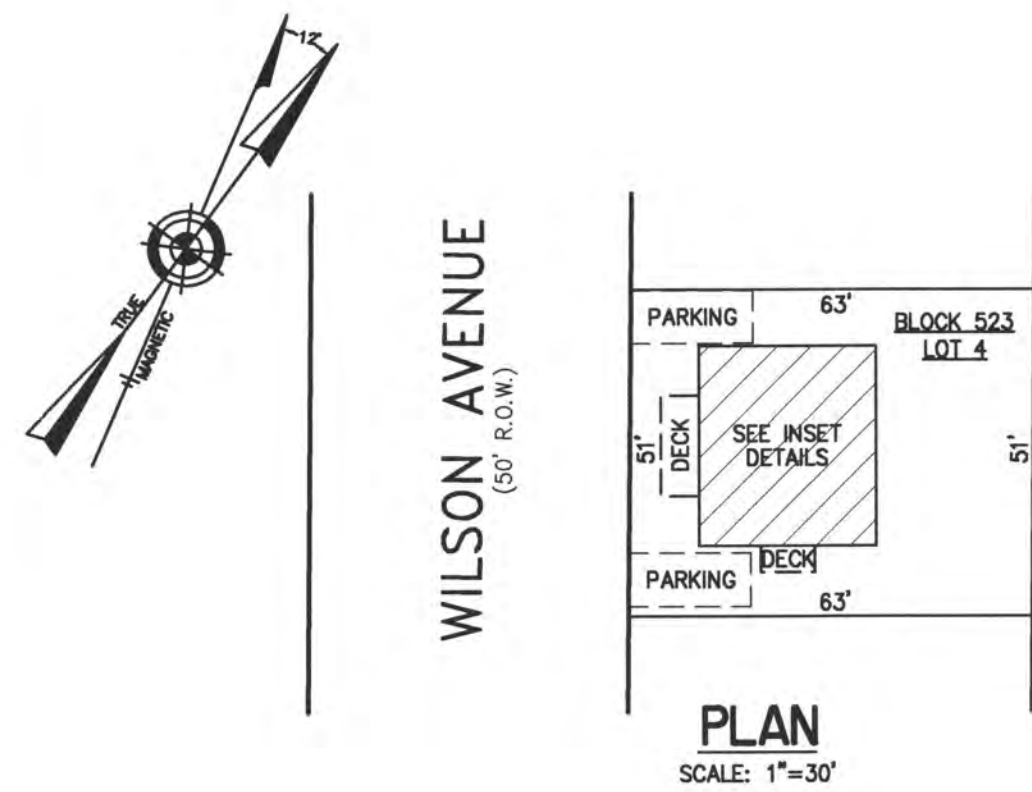
**BLOCK 424.02, LOT 11**  
211 NORTH HARDING AVENUE CONDOMINIUM  
211 NORTH HARDING AVENUE  
INSET "B"



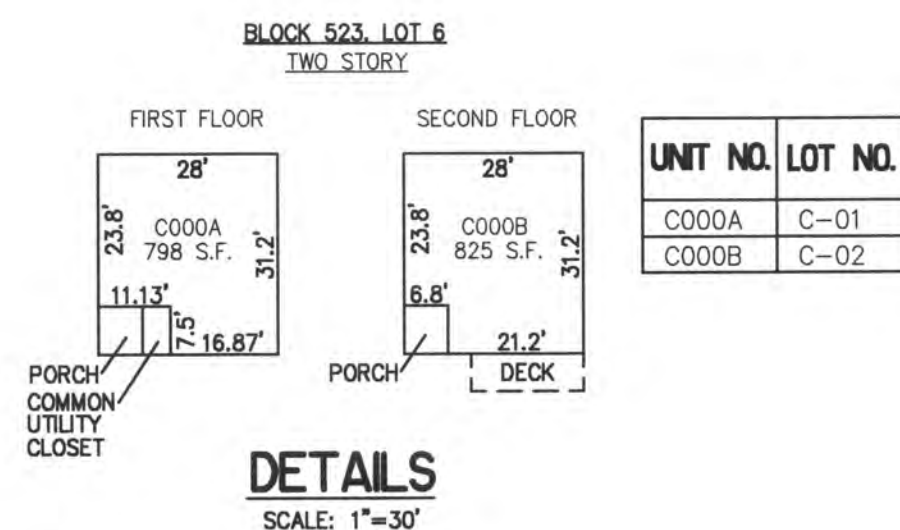
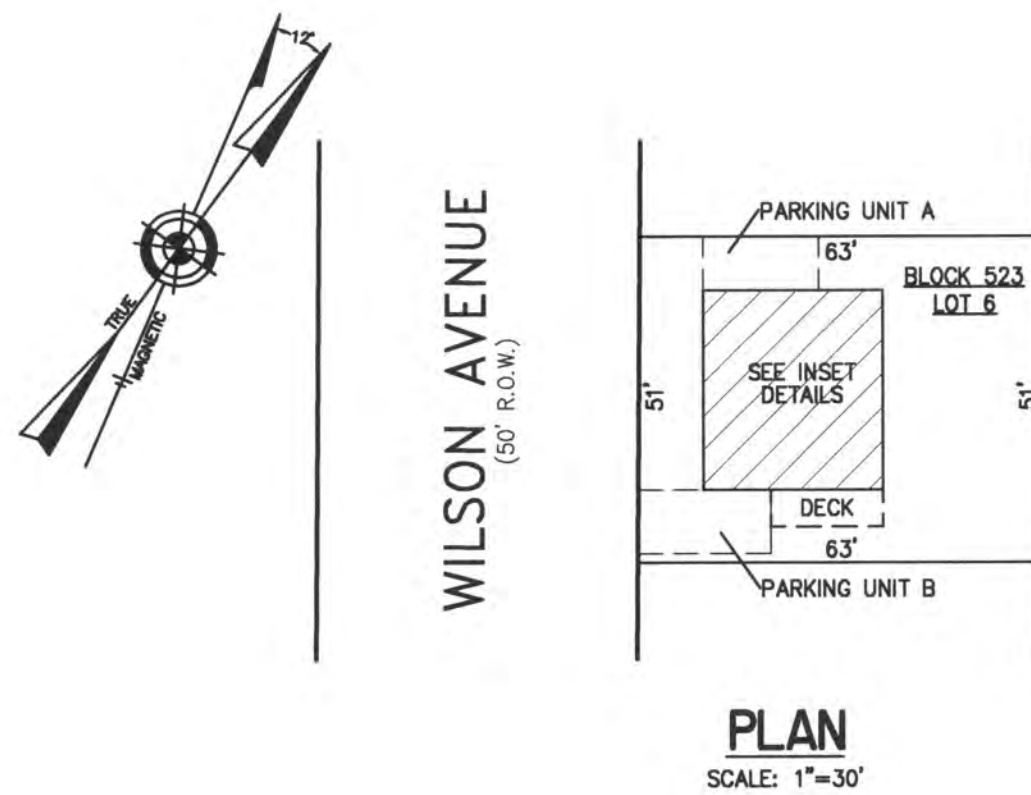
**BLOCK 524.02, LOT 5**  
304 NORTH WILSON AVENUE CONDOMINIUM  
304 NORTH WILSON AVENUE  
INSET "C"



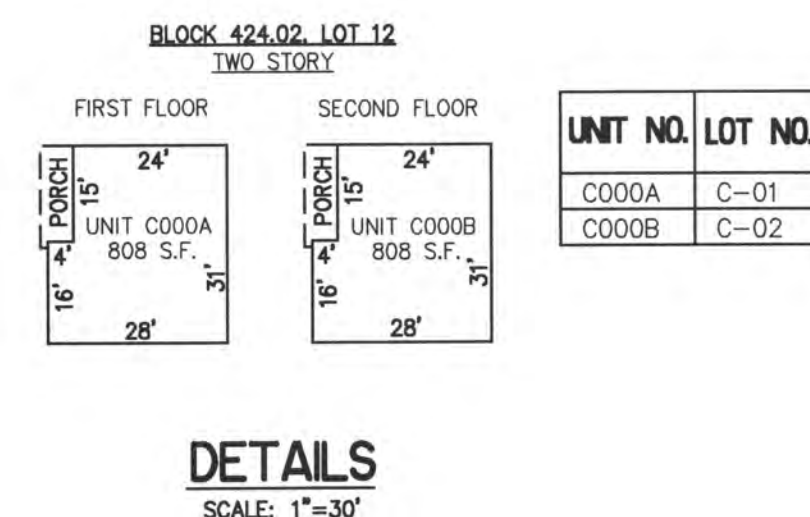
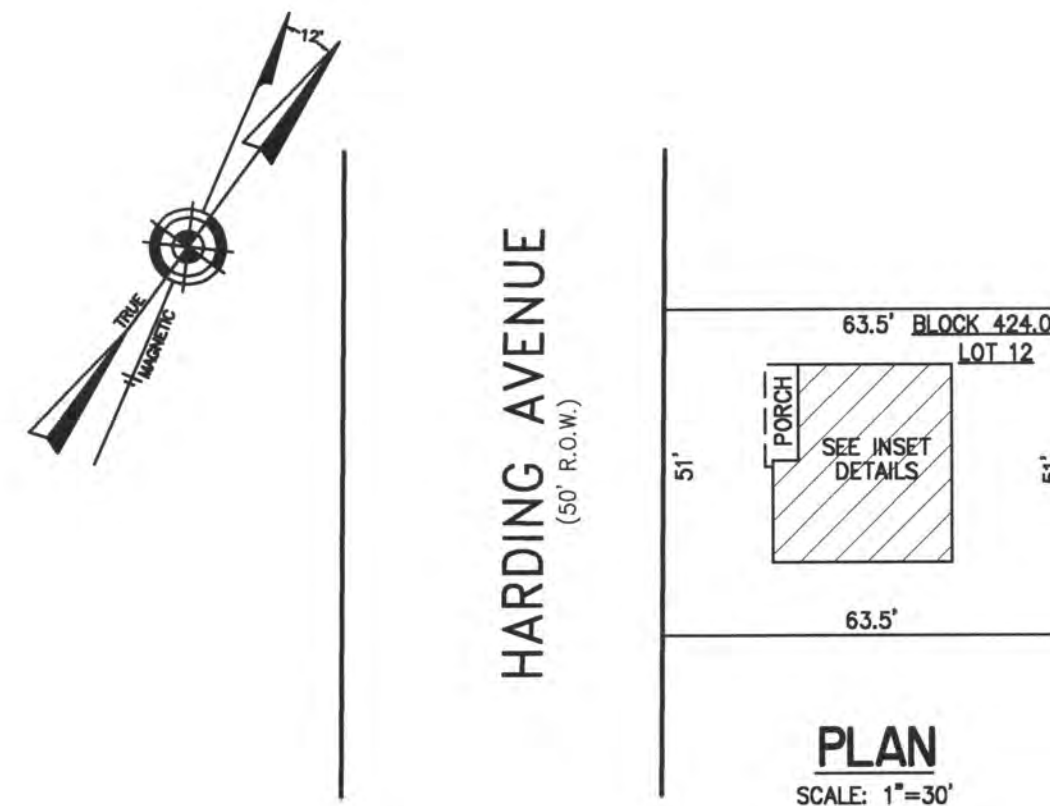
**BLOCK 523, LOT 1**  
315 NORTH WILSON AVENUE CONDOMINIUM  
315 NORTH WILSON AVENUE  
INSET "D"



**BLOCK 523, LOT 4**  
309 NORTH WILSON AVENUE CONDOMINIUM  
309 N. WILSON AVENUE  
INSET "E"



**BLOCK 523, LOT 6**  
305 NORTH WILSON AVENUE CONDOMINIUM  
305 N. WILSON AVENUE  
INSET "F"



**BLOCK 424.02, LOT 12**  
209 NORTH HARDING AVENUE CONDOMINIUM  
209 NORTH HARDING AVENUE  
INSET "G"

**CONDOMINIUM DETAILS AND DIMENSIONS**

- BLOCK 423, LOT 1.02
- BLOCK 424.02, LOT 11
- BLOCK 424.02, LOT 12
- BLOCK 524.02, LOT 5
- BLOCK 523, LOT 1
- BLOCK 523, LOT 4
- BLOCK 523, LOT 6
- SEE PLATE 11

"THIS TAX MAP PLATE HAS BEEN DIGITALLY DRAWN USING COMPUTER-AIDED DRAFTING/DESIGN (CADD) & COORDINATE GEOMETRY (COGO). IT IS BASED ON THE ORIGINAL DIGITALLY DRAWN TAX MAP PLATE BEARING THE OFFICIAL NEW JERSEY DIVISION TAXATION APPROVAL STAMP WITH APPROVAL DATE 6-3-2005 SERIAL NUMBER 846 AND SIGNATURES OF SIGNERS' THOMAS J. REILLY, CHIEF, LOCAL PROPERTY, FIELD ASSISTANCE; SANTO C. DIDONATO, SUPERVISING FIELD REPRESENTATIVE. THE ORIGINAL DIGITALLY DRAWN TAX MAP PLATE WITH THE OFFICIAL APPROVAL STAMP IS ON FILE WITH REMINGTON, VERNICK & WALBERG ENGINEERS."

**TAX MAP**  
**CITY OF MARGATE**

ATLANTIC COUNTY NEW JERSEY  
SCALE: AS NOTED DATE: 1-30-2004

**CRAIG F. REMINGTON LAND SURVEYOR LIC. NO. 23924**



**REMINGTON, VERNICK & WALBERG ENGINEERS**  
24 GA 28048700  
845 N. MAIN STREET, PLEASANTVILLE, NJ 08232  
(609) 648-780, FAX (609) 648-7076  
WEB SITE ADDRESS WWW.RVW.COM