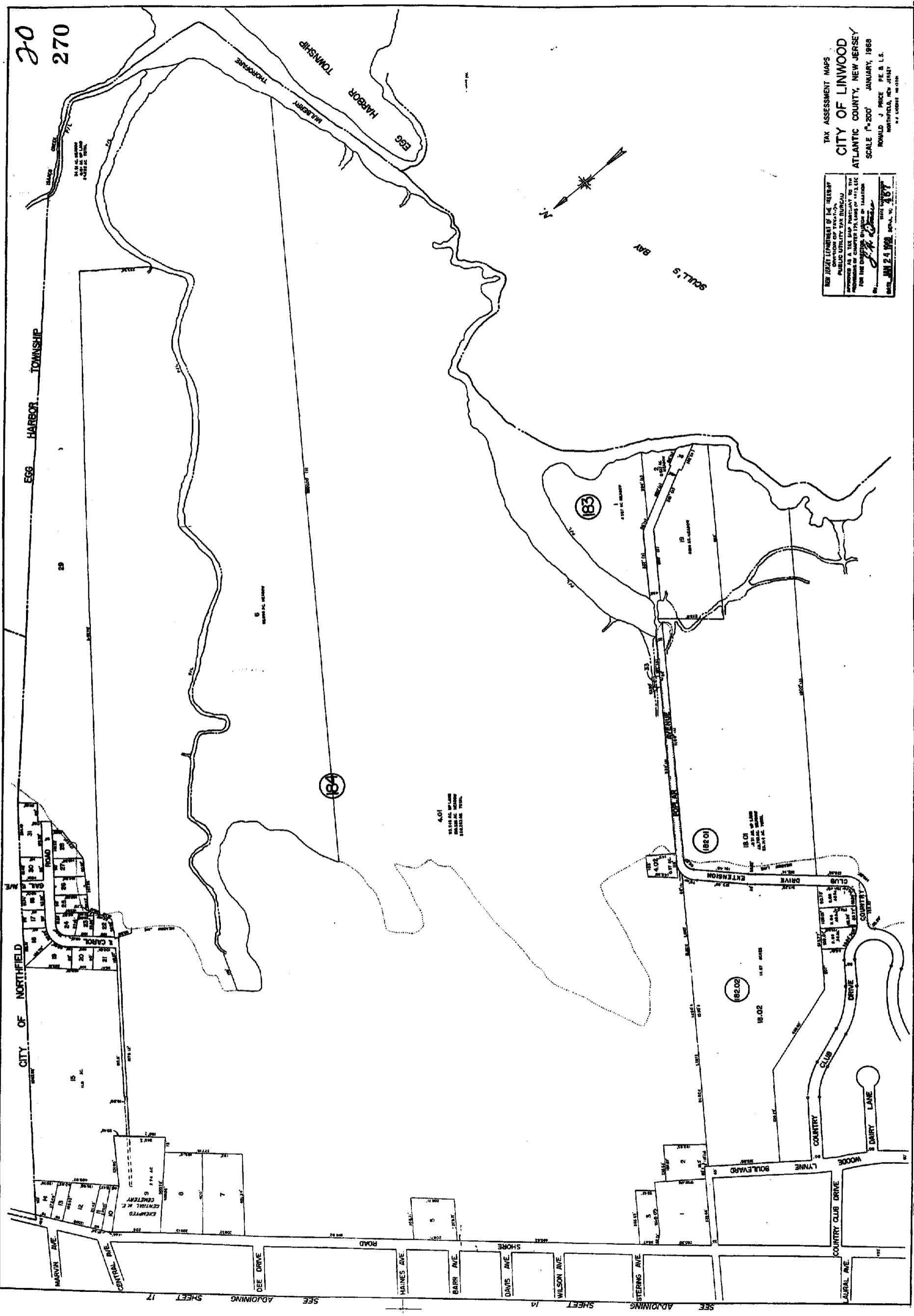


270
20



TAX ASSESSMENT MAPS
CITY OF LINWOOD
 ATLANTIC COUNTY, NEW JERSEY
 SCALE 1"=200' JANUARY, 1968
 RONALD J. PRICE P.E. S. L.S.
 NORTHFIELD, NEW JERSEY
 P.O. BOX 1001

THE JUSTICE DEPARTMENT OF THE REVENUE
 OF NEW JERSEY HAS REVIEWED
 THIS MAP AND APPROVED IT AS A TAX MAP
 PURSUANT TO THE PROVISIONS OF CHAPTER 175, LAWS OF 1952, L.C.
 FOR THE COMPTROLLER OF TAXATION
 DATE JUN 24 1968 OFF. NO. 467

SEE ADJOINING SHEET 17
 SEE ADJOINING SHEET 19
 SEE ADJOINING SHEET 18