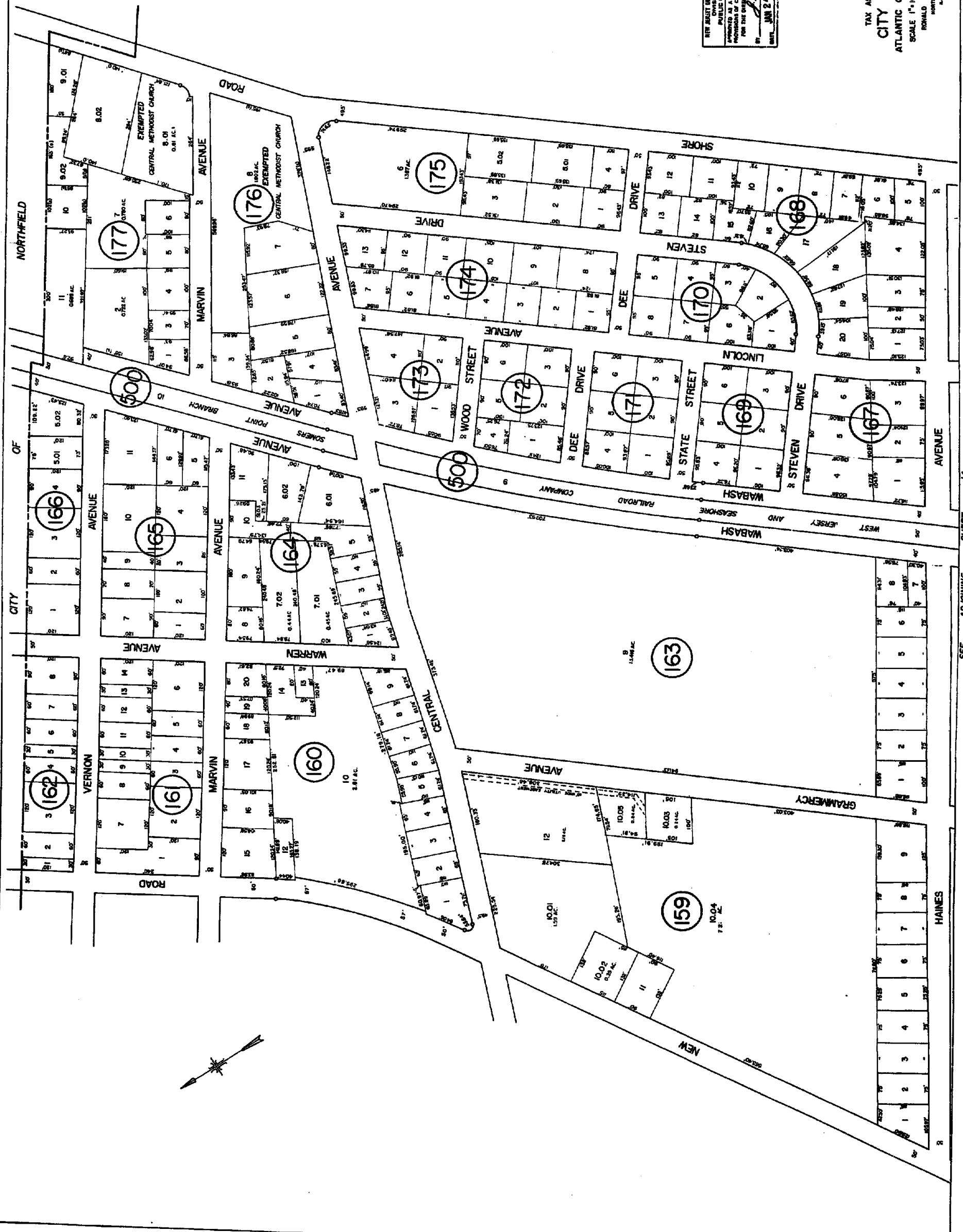


17



NEW BRITAIN BOARDMAN & BILLY
 DIVISION OF TAXATION
 PUBLIC UTILITY TAX BUREAU
 APPOINTED AS THE MAP PREPARER TO THE
 COMMISSIONERS OF CHESAPEAKE, LAND OF 1911-12
 FOR THE CITY OF LINWOOD, NEW JERSEY
 BY *J. H. Boardman*
 DATE JAN 24 1968
 SHEET NO. 17

TAX ASSESSMENT MAPS
CITY OF LINWOOD
 ATLANTIC COUNTY, NEW JERSEY
 SCALE 1"=100' JANUARY, 1968
 RONALD J. PRICE P.E. & L.F.
 NORTHWOOD, NEW JERSEY
 U.S. LICENSE NO. 1249

267

SEE ADJOINING SHEET 20

SEE ADJOINING SHEET 16

SEE ADJOINING SHEET 14