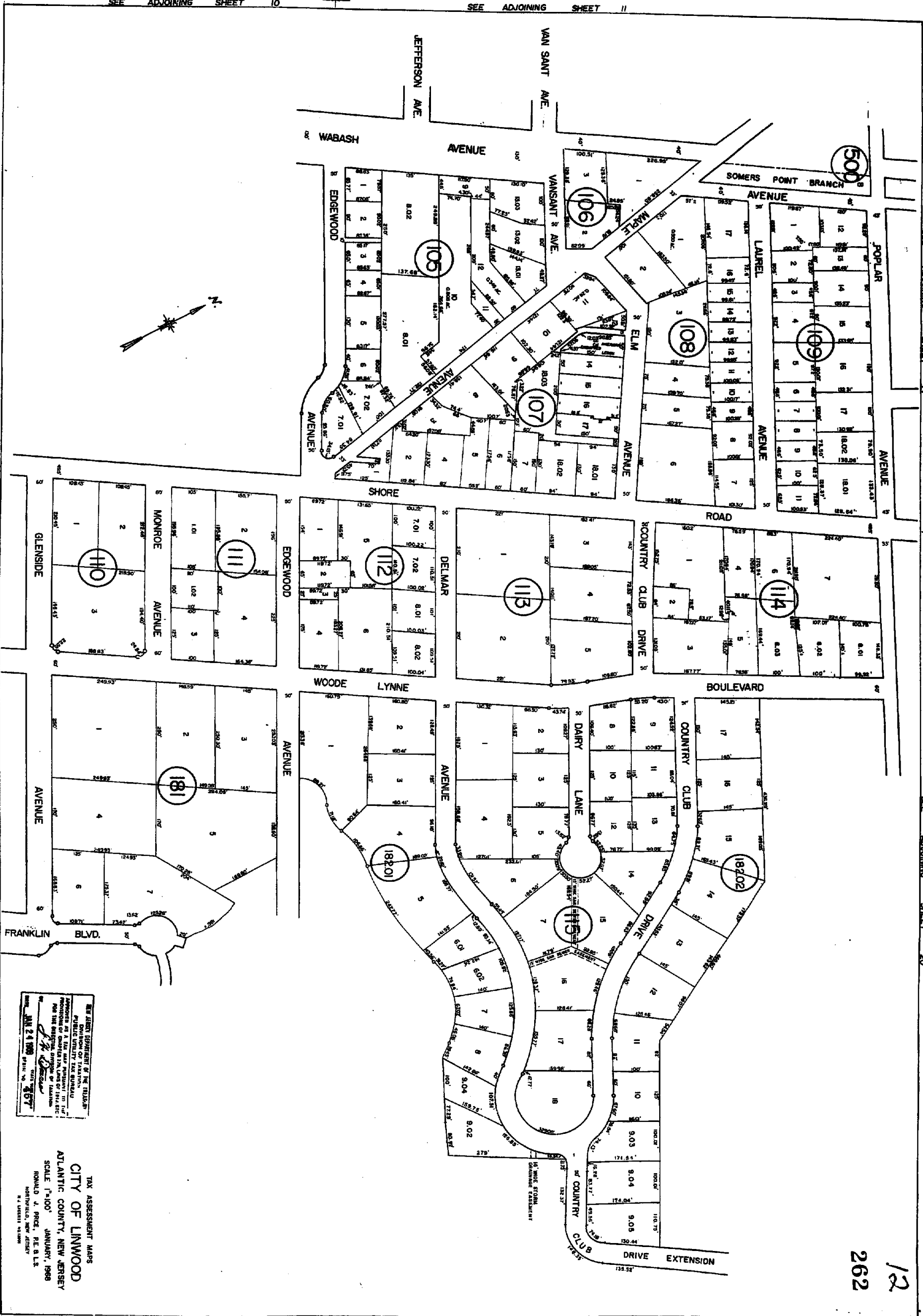


SEE ADJOINING SHEET 10

SEE ADJOINING SHEET 11

SEE ADJOINING SHEET 14

SEE ADJOINING SHEET 20



NEW JERSEY DEPARTMENT OF THE TREASURY
 DIVISION OF TAXATION
 OFFICE OF FIELD TAX SERVICES
 APPROVED FOR THE STATE TAX COLLECTOR
 AUTHORITY TO SIGN AND RETURN TO THE
 COUNTY CLERK FOR RECORDING IN THE
 PUBLIC RECORDS OF THE COUNTY OF LINWOOD
 DATE: JAN 24 1988 TIME: 10:57 AM

TAX ASSESSMENT MAPS
 CITY OF LINWOOD
 ATLANTIC COUNTY, NEW JERSEY
 SCALE 1"=100' JANUARY, 1988
 RONALD A. PRICE, P.E. & L.S.
 HORTONFIELD, NEW JERSEY

12
 262

SEE ADJOINING SHEET 19

SEE ADJOINING SHEET 20