

SEE ADJOINING SHEET 5

SEE ADJOINING SHEET 4

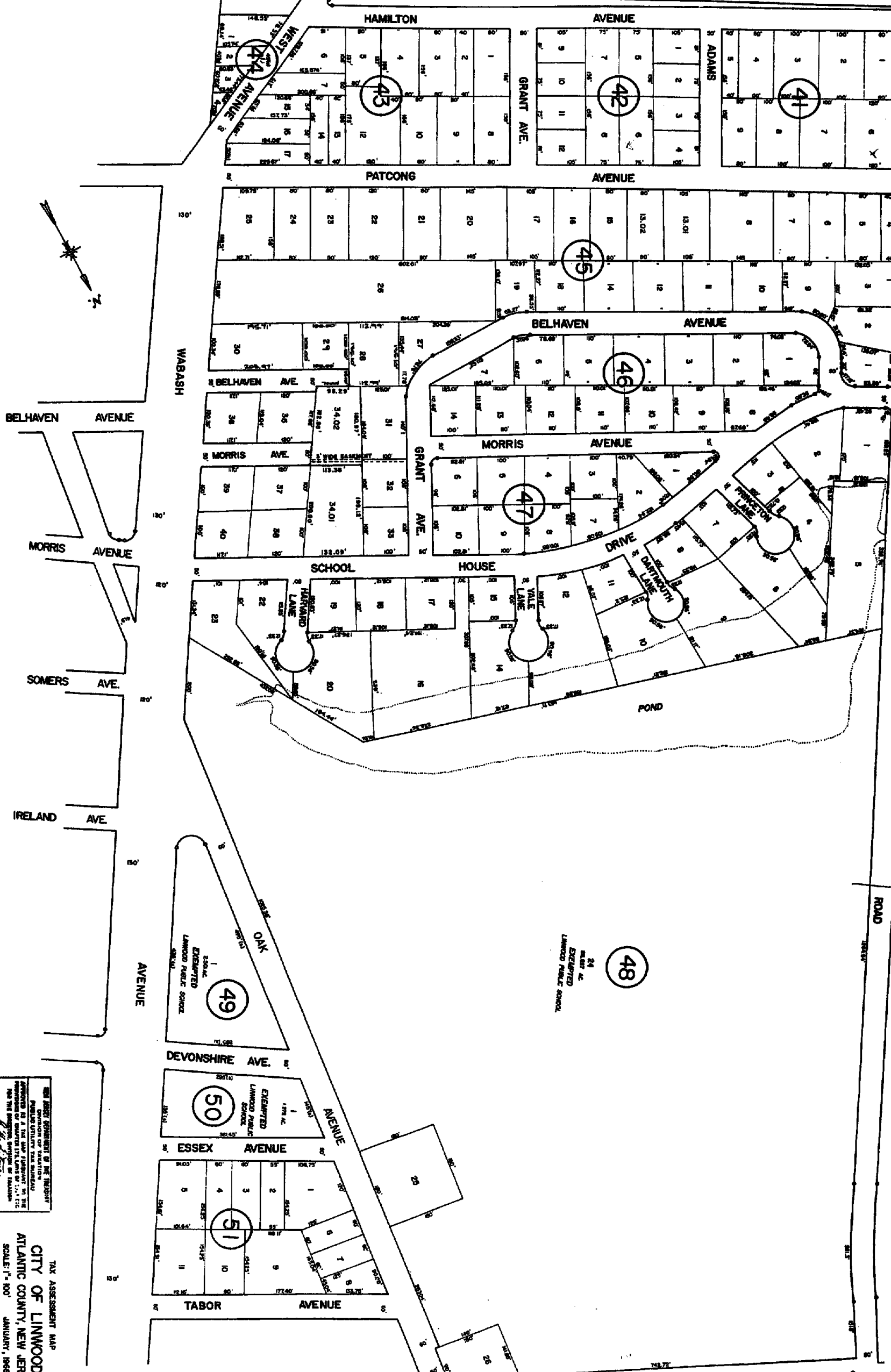
SEE ADJOINING SHEET 6

SEE ADJOINING SHEET 7

SEE ADJOINING SHEET 9

SEE ADJOINING SHEET 10

SEE ADJOINING SHEET 11



NEW JERSEY DEPARTMENT OF TREASURY
 DIVISION OF TAXATION
 PHILADELPHIA OFFICE TAX MAPS
 PREPARED BY A. J. AND S. J. STANLEY IN THE
 PRESENCE OF CHARLES W. GIBBS, JR., C.E.
 FOR THE SURVEY, SURVEYOR OF ATLANTIC
 COUNTY, NEW JERSEY
 DATE: JAN 24 1968
 SHEET NO. 457

TAX ASSESSMENT MAP
 CITY OF LINWOOD
 ATLANTIC COUNTY, NEW JERSEY
 SCALE: 1" = 100'
 RICHARD J. PRINCE, P.E. & L.S.
 NORTHFIELD, NEW JERSEY
 DATE: JANUARY, 1968

258
 8