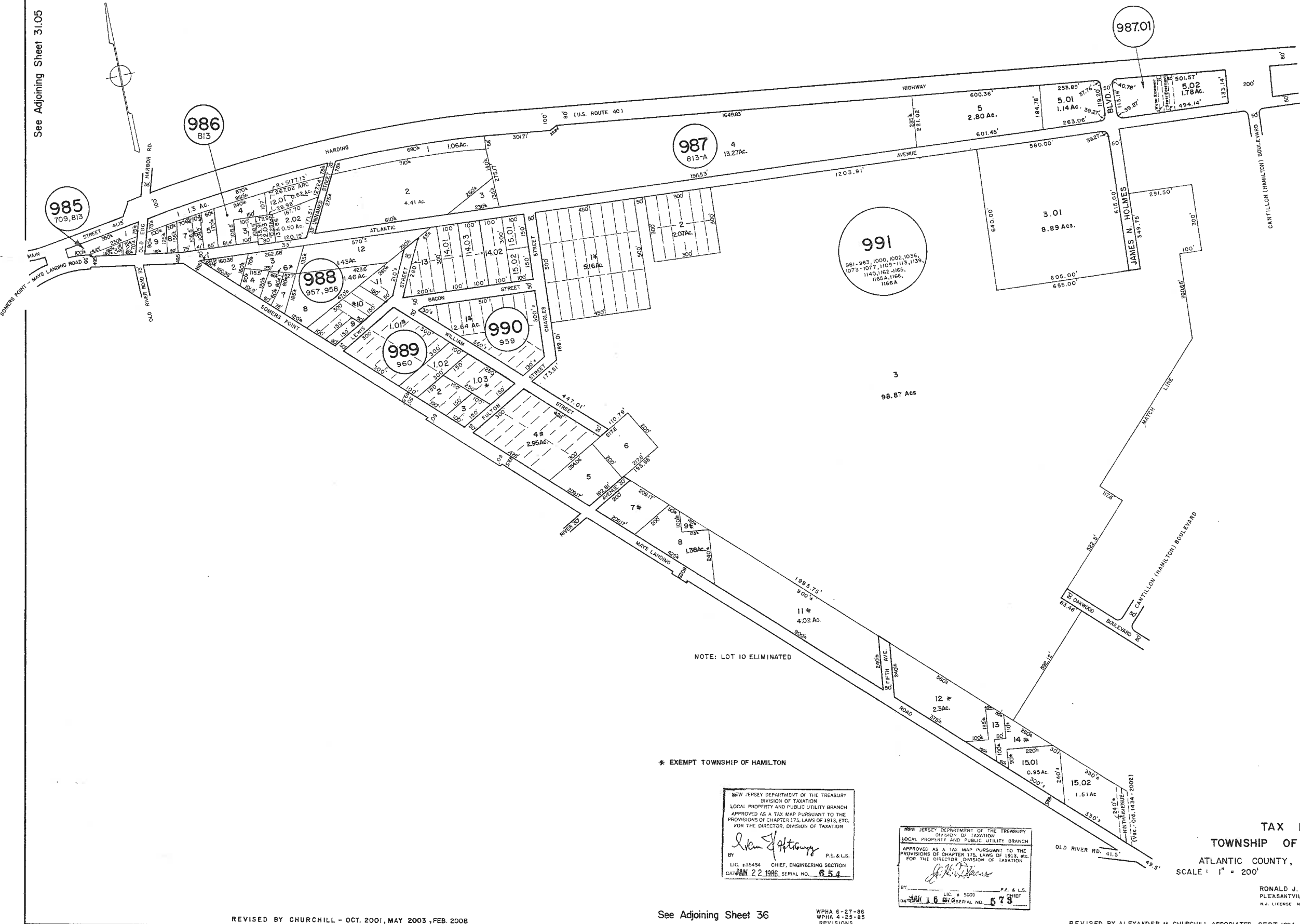


See Adjoining Sheet 38

See Adjoining Sheet 31.05



See Adjoining Sheet 37.02

NOTE: LOT 10 ELIMINATED

* EXEMPT TOWNSHIP OF HAMILTON

NEW JERSEY DEPARTMENT OF THE TREASURY
 DIVISION OF TAXATION
 LOCAL PROPERTY AND PUBLIC UTILITY BRANCH
 APPROVED AS A TAX MAP PURSUANT TO THE
 PROVISIONS OF CHAPTER 175, LAWS OF 1913, ETC.
 FOR THE DIRECTOR, DIVISION OF TAXATION

John J. Anthony
 BY P.E. & L.S.
 LIC. #15434 CHIEF, ENGINEERING SECTION
 DATE JAN 22 1996 SERIAL NO. 854

NEW JERSEY DEPARTMENT OF THE TREASURY
 DIVISION OF TAXATION
 LOCAL PROPERTY AND PUBLIC UTILITY BRANCH
 APPROVED AS A TAX MAP PURSUANT TO THE
 PROVISIONS OF CHAPTER 175, LAWS OF 1913, ETC.
 FOR THE DIRECTOR, DIVISION OF TAXATION

John J. Anthony
 BY P.E. & L.S.
 LIC. # 5008 CHIEF
 DATE JAN 16 1996 SERIAL NO. 578

TAX MAP
 TOWNSHIP OF HAMILTON
 ATLANTIC COUNTY, NEW JERSEY
 SCALE: 1" = 200' DATE: JUNE 1, 1977

RONALD J. PRICE
 PLEASANTVILLE, N.J.
 N.J. LICENSE NO. 19961

REVISED BY CHURCHILL - OCT. 2001, MAY 2003, FEB. 2008

See Adjoining Sheet 36

WPHA 6-27-86
WPHA 4-25-85
REVISIONS

REVISED BY ALEXANDER M. CHURCHILL ASSOCIATES - SEPT. 1994