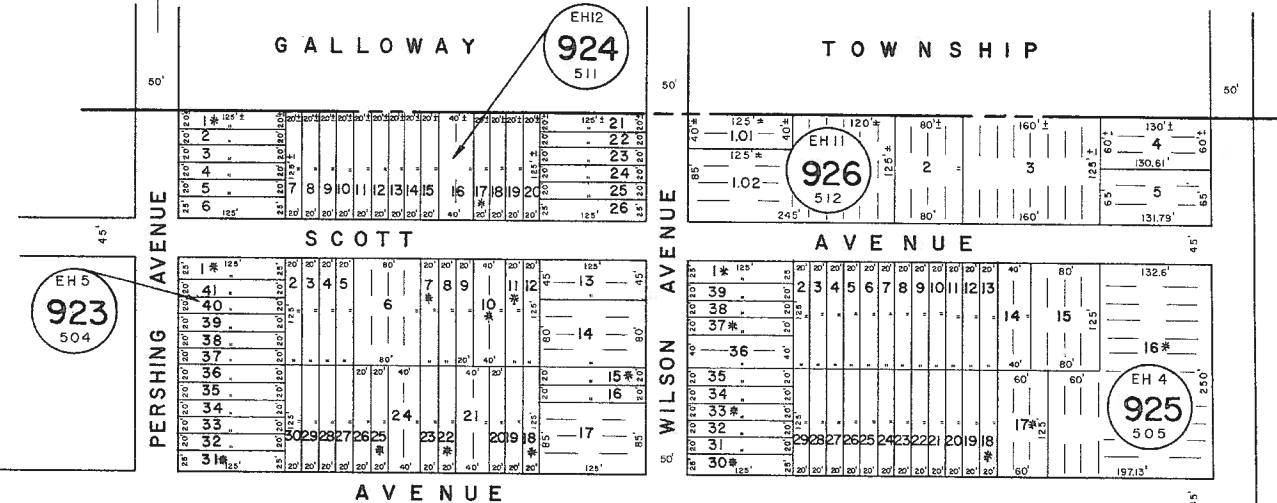


See Adjoining Sheet 34.02

ATLANTIC COUNTY
GALLOWAY TOWNSHIP



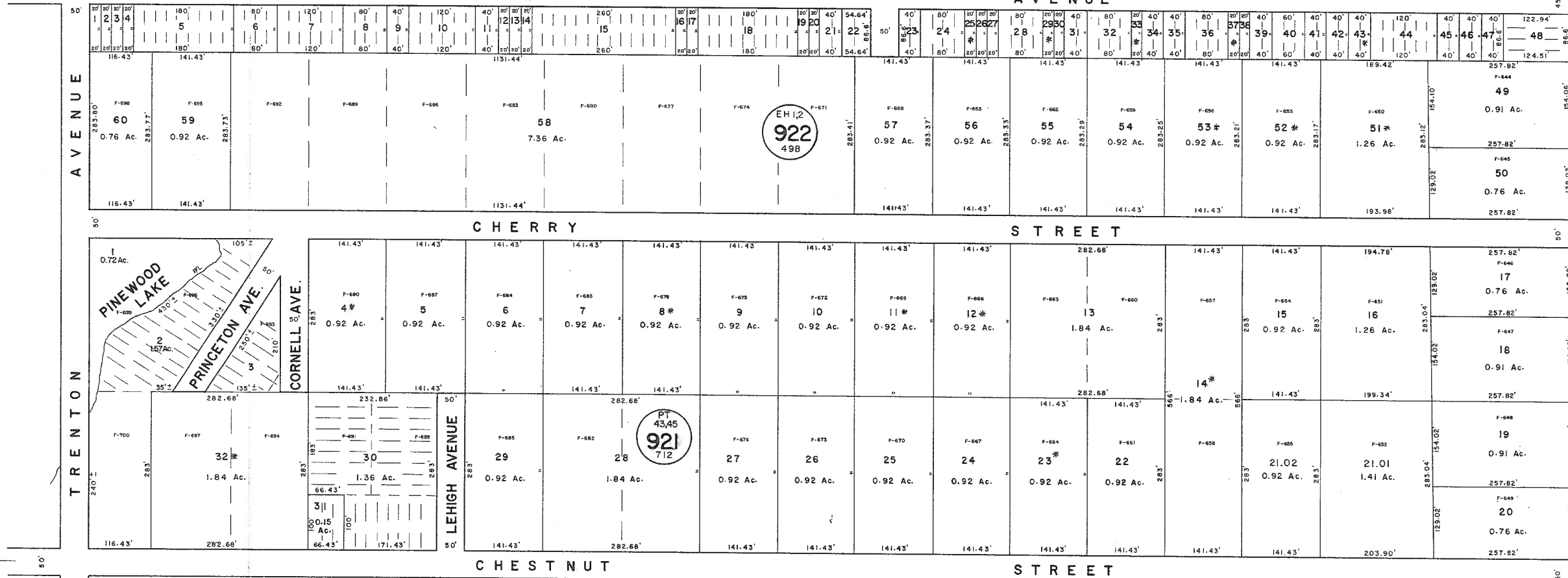
SIMMS AVE.

MARCH AVE.

PERSHING AVENUE

WILSON AVENUE

See Adjoining Sheet 34.02



DROSERA ST.

BOULEVARD

TRENTON AVENUE

CHERRY STREET

CHESTNUT STREET

NOTE: LETTERS "EH" INDICATES NUMBER ON MAP OF EGG HARBOR CITY MANOR
 LETTER "F" INDICATES NUMBERS ON MAP OF WEST EGG HARBOR BY DANIEL B. FRAZIER COMPANY.
 LETTERS "PT" INDICATE NUMBERS ON MAP OF PINEWOOD TERRACE
 * EXEMPT TOWNSHIP OF HAMILTON

NEW JERSEY DEPARTMENT OF THE TREASURY
 DIVISION OF TAXATION
 LOCAL PROPERTY AND PUBLIC UTILITY BRANCH
 APPROVED AS A TAX MAP PURSUANT TO THE PROVISIONS OF CHAPTER 175, LAWS OF 1953, ETC. FOR THE DIRECTOR, DIVISION OF TAXATION
 BY *John J. Hoffmann* P.E. & L.S.
 LIC. #15434 CHIEF, ENGINEERING SECTION
 JAN 22 1986 SERIAL NO. 654

NEW JERSEY DEPARTMENT OF THE TREASURY
 DIVISION OF TAXATION
 LOCAL PROPERTY AND PUBLIC UTILITY BRANCH
 APPROVED AS A TAX MAP PURSUANT TO THE PROVISIONS OF CHAPTER 175, LAWS OF 1953, ETC. FOR THE DIRECTOR, DIVISION OF TAXATION
 BY *J. J. Hoffmann* P.E. & L.S.
 MAR 1 1986 SERIAL NO. 573

TAX MAP
 TOWNSHIP OF HAMILTON
 ATLANTIC COUNTY, NEW JERSEY
 SCALE: 1" = 100' DATE: JUNE 1, 1977
 RONALD J. PRICE
 PLEASANTVILLE, N.J.
 N.J. LICENSE NO. 15001

See Adjoining Sheet 34.04

See Adjoining Sheet 34

See Adjoining Sheet 34

REV. BY REMINGTON & VERNICK ENGINEERS - 1-8-2013
REV. BY CHURCHILL - FEB. 2008

WPHA 4-25-85 REVISIONS