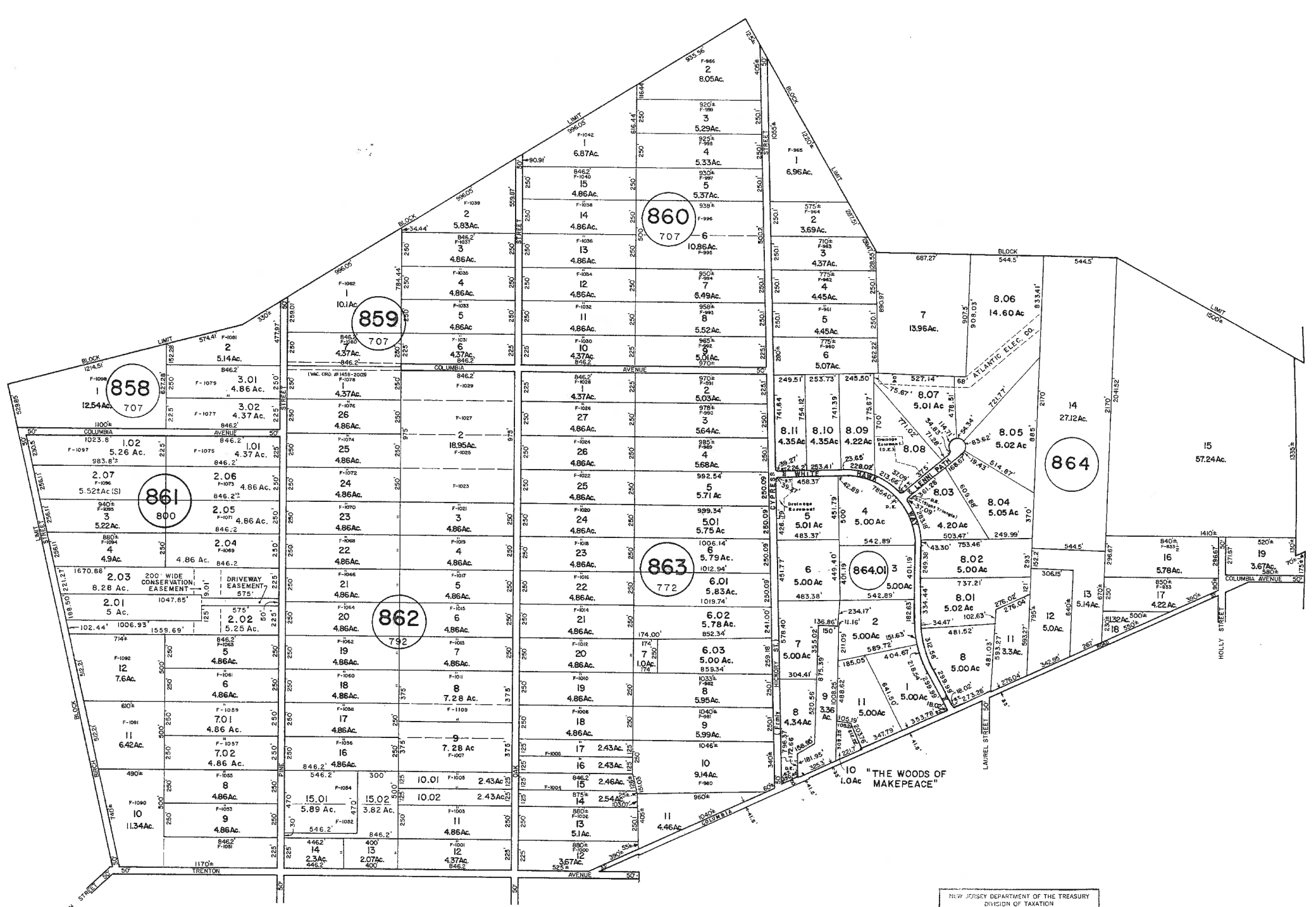


REVISIONS
WPHA 1-4-91

See Adjoining Sheet 20



NOTE: LETTER "F" INDICATES NUMBERS ON MAP OF WEST EGG HARBOR BY DANIEL B. FRAZIER COMPANY.

NEW JERSEY DEPARTMENT OF THE TREASURY
DIVISION OF TAXATION
LOCAL PROPERTY AND PUBLIC UTILITY BRANCH
APPROVED AS A TAX MAP PURSUANT TO THE
PROVISIONS OF CHAPTER 175, LAWS OF 1913, ETC.
FOR THE DIVISION OF TAXATION

Alexander M. Churchill
BY: P.E. & L.S.
LIC. #15434 CHIEF, ENGINEERING SECTION
JAN. 22 1986 SERIAL NO. 654

NEW JERSEY DEPARTMENT OF THE TREASURY
DIVISION OF TAXATION
LOCAL PROPERTY AND PUBLIC UTILITY BRANCH
APPROVED AS A TAX MAP PURSUANT TO THE
PROVISIONS OF CHAPTER 175, LAWS OF 1913, ETC.
FOR THE DIVISION OF TAXATION

DATE: 10/18/86
SERIAL NO. 678

TAX MAP
TOWNSHIP OF HAMILTON
ATLANTIC COUNTY, NEW JERSEY
SCALE: 1" = 400' DATE: JUNE 1, 1977

RONALD J. PRICE
PLEASANTVILLE, N.J.
N.J. LICENSE NO. 13901

WPHA 4-22-85
WPHA 5-7-84
REVISIONS

OCT. 2004, MARCH 2008
REVISED BY CHURCHILL - MAY 2002, FEB. 2003, MAR. 2003
REVISED BY ALEXANDER M. CHURCHILL ASSOCIATES, SEPT. '95

See Adjoining Sheet 32

See Adjoining Sheet 34

See Adjoining Sheet 21