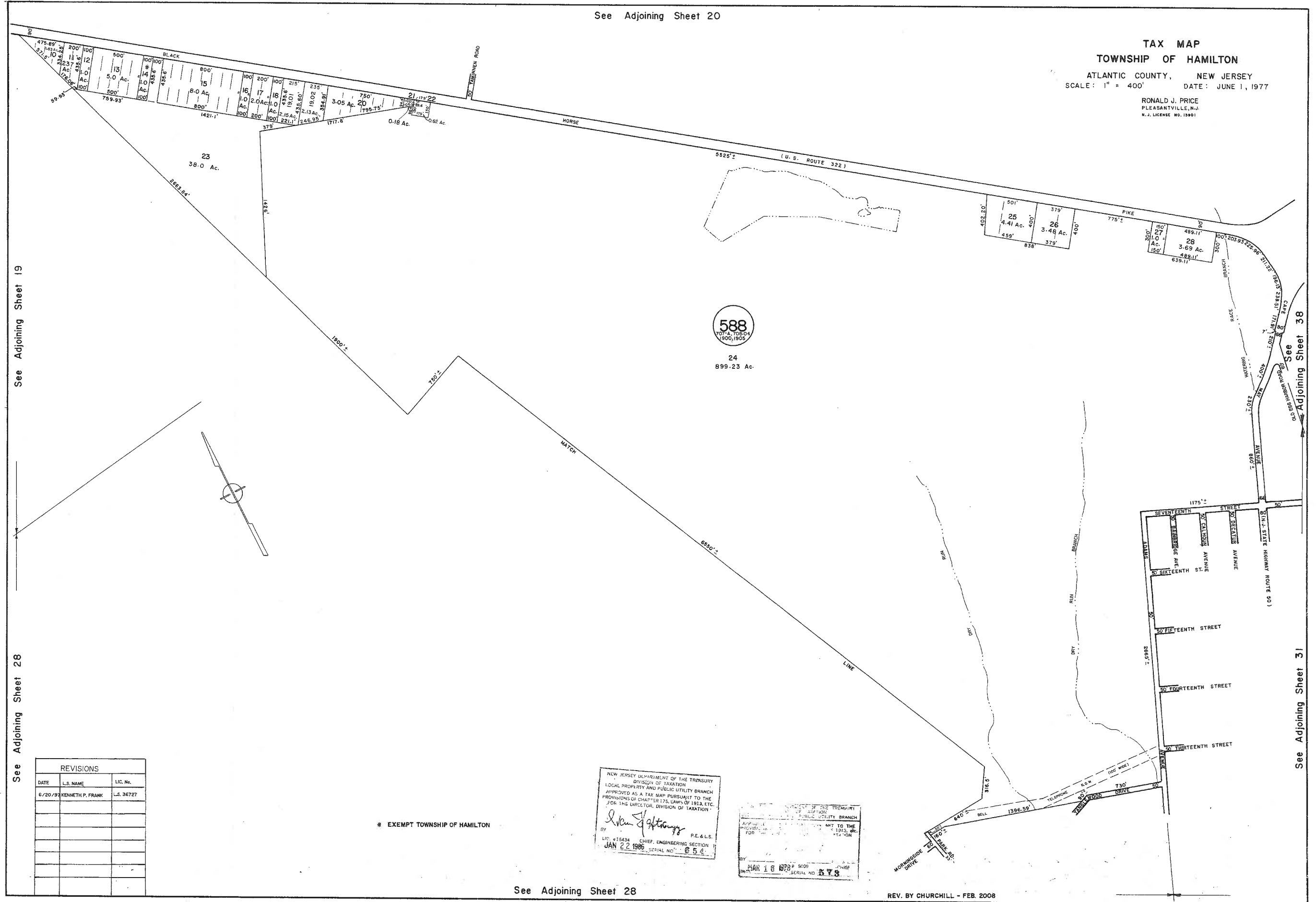


See Adjoining Sheet 20

TAX MAP
TOWNSHIP OF HAMILTON
 ATLANTIC COUNTY, NEW JERSEY
 SCALE: 1" = 400' DATE: JUNE 1, 1977

RONALD J. PRICE
 PLEASANTVILLE, N.J.
 N.J. LICENSE NO. 15901



See Adjoining Sheet 19

See Adjoining Sheet 28

See Adjoining Sheet 38

See Adjoining Sheet 31

REVISIONS		
DATE	L.S. NAME	LIC. No.
6/20/97	KENNETH P. FRANK	L.S. 36727

* EXEMPT TOWNSHIP OF HAMILTON

NEW JERSEY DEPARTMENT OF THE TREASURY
 DIVISION OF TAXATION
 LOCAL PROPERTY AND PUBLIC UTILITY BRANCH
 APPROVED AS A TAX MAP PURSUANT TO THE
 PROVISIONS OF CHAPTER 176, LAWS OF 1913, ETC.
 FOR THE DIRECTOR, DIVISION OF TAXATION

Ronald J. Price
 P.E. & L.S.
 LIC. #15901 CHIEF, ENGINEERING SECTION
 JAN 22 1980 SERIAL NO. 656

NEW JERSEY DEPARTMENT OF THE TREASURY
 DIVISION OF TAXATION
 LOCAL PROPERTY AND PUBLIC UTILITY BRANCH
 APPROVED AS A TAX MAP PURSUANT TO THE
 PROVISIONS OF CHAPTER 176, LAWS OF 1913, ETC.
 FOR THE DIRECTOR, DIVISION OF TAXATION

Ronald J. Price
 P.E. & L.S.
 LIC. #15901 CHIEF, ENGINEERING SECTION
 MAR 18 1977 SERIAL NO. 578

See Adjoining Sheet 28

REV. BY CHURCHILL - FEB. 2008