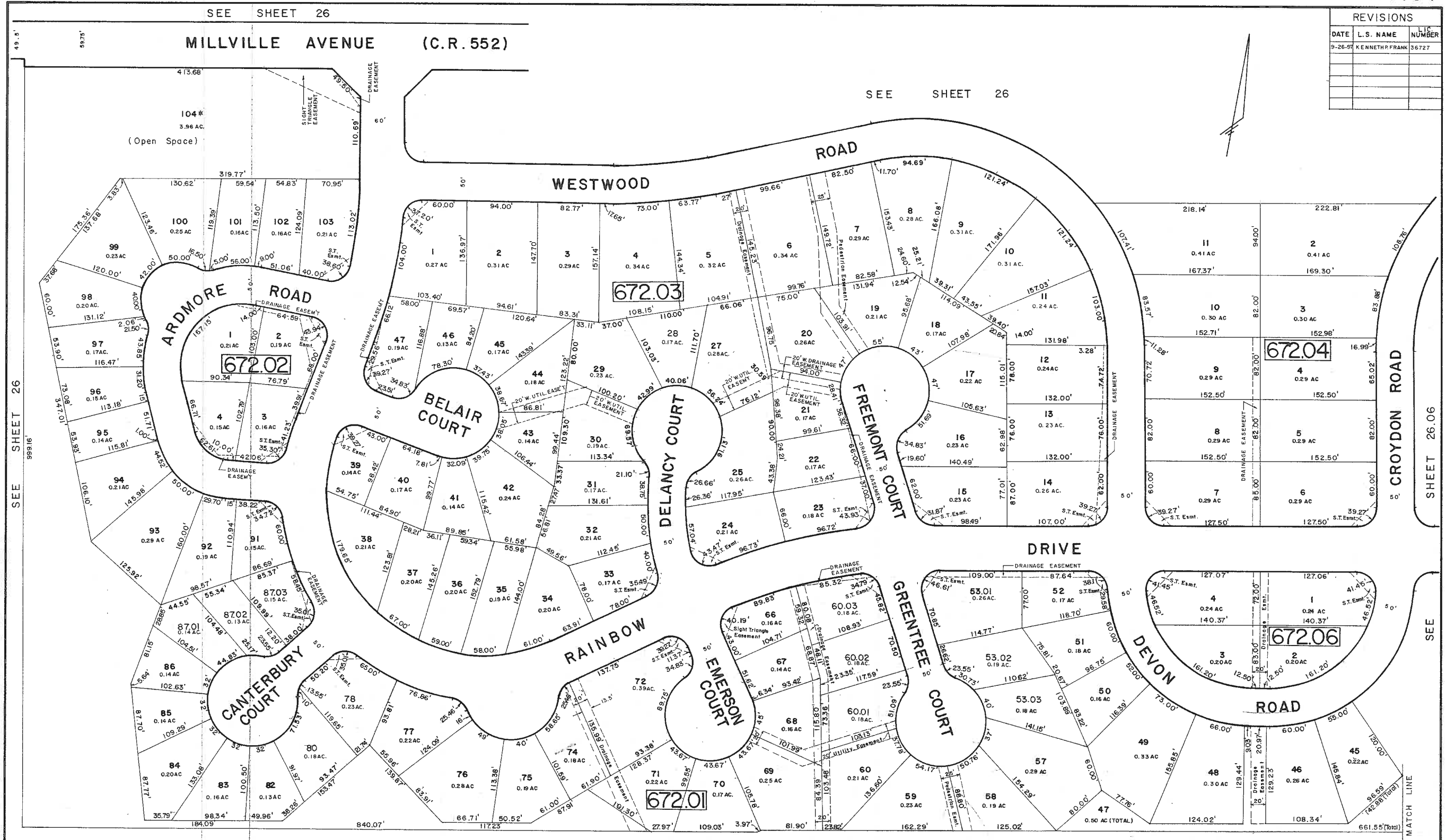


SEE SHEET 26

| REVISIONS | | |
|-----------|---------------|-------------|
| DATE | L.S. NAME | LIC. NUMBER |
| 9-26-97 | KENNETH FRANK | 36727 |
| | | |
| | | |
| | | |



SEE SHEET 26

SHEET 26.06

SEE

SEE SHEET 26

"MISTY PINES ESTATES"

* EXEMPT TOWNSHIP OF HAMILTON

TAX MAP
 TOWNSHIP OF HAMILTON
 ATLANTIC COUNTY NEW JERSEY
 SCALE: 1" = 60'
 ALEXANDER M. CHURCHILL, P.E. & L.S.
 344 Route 73 - Berlin, New Jersey

REV. BY CHURCHILL - FEB. 2008