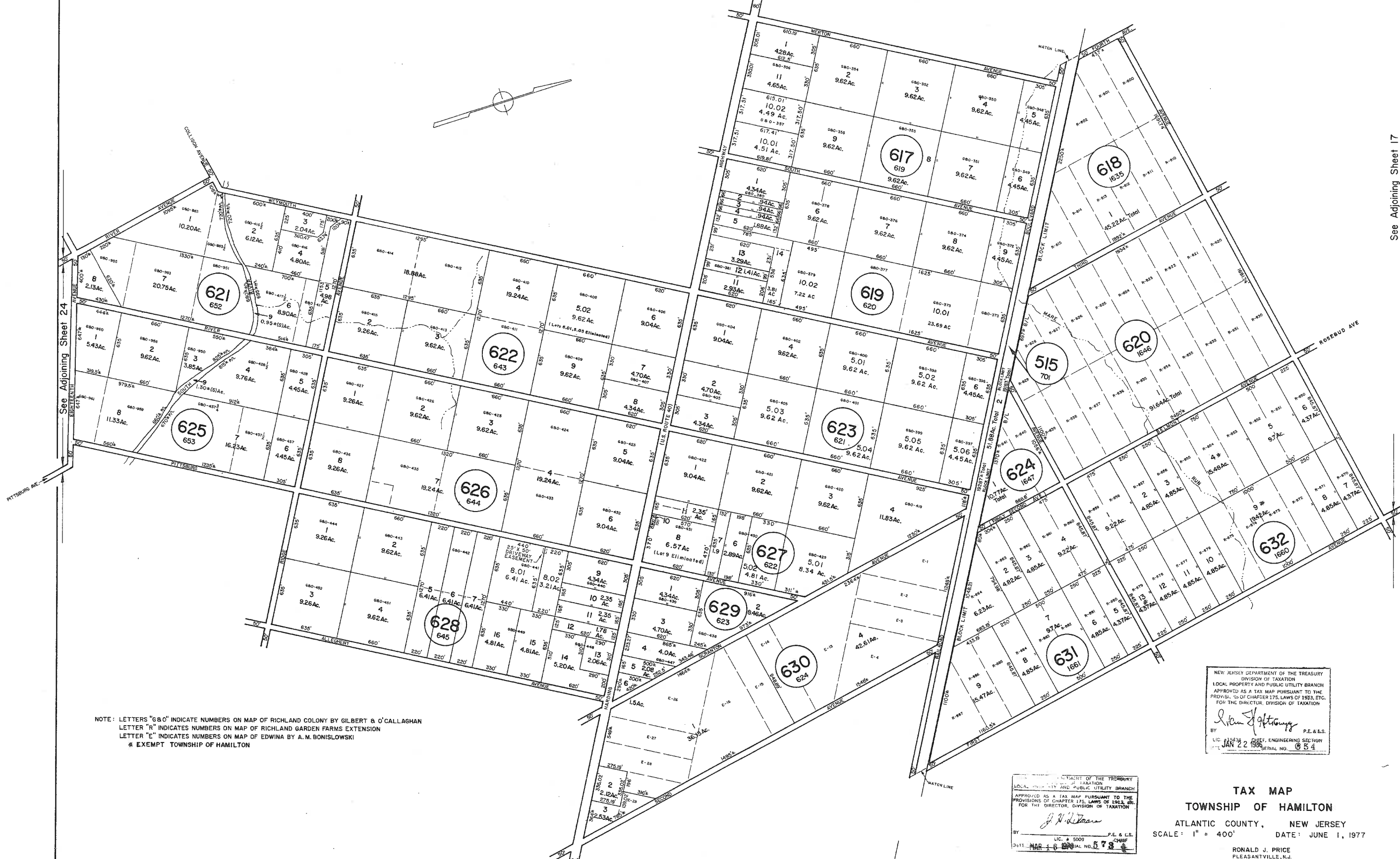


REVISIONS
WPHA 1-10-92

See Adjoining Sheet 22

See Adjoining Sheet 16



NOTE: LETTERS "G&O" INDICATE NUMBERS ON MAP OF RICHLAND COLONY BY GILBERT & O'CALLAGHAN
 LETTER "R" INDICATES NUMBERS ON MAP OF RICHLAND GARDEN FARMS EXTENSION
 LETTER "E" INDICATES NUMBERS ON MAP OF EDWINA BY A. M. BONISLWSKI
 * EXEMPT TOWNSHIP OF HAMILTON

NEW JERSEY DEPARTMENT OF THE TREASURY
 DIVISION OF TAXATION
 LOCAL PROPERTY AND PUBLIC UTILITY BRANCH
 APPROVED AS A TAX MAP PURSUANT TO THE
 PROVISIONS OF CHAPTER 175, LAWS OF 1983, ETC.
 FOR THE DIRECTOR, DIVISION OF TAXATION

John J. Hannon
 BY: P.E. & L.S.
 LIC. # 12439 CHIEF, ENGINEERING SECTION
 JAN 22 1988 SERIAL NO. 84

NEW JERSEY DEPARTMENT OF THE TREASURY
 DIVISION OF TAXATION
 LOCAL PROPERTY AND PUBLIC UTILITY BRANCH
 APPROVED AS A TAX MAP PURSUANT TO THE
 PROVISIONS OF CHAPTER 175, LAWS OF 1983, ETC.
 FOR THE DIRECTOR, DIVISION OF TAXATION

J. Hannon
 BY: P.E. & L.S.
 LIC. # 5009 CHIEF
 MAR 16 1988 SERIAL NO. 678

TAX MAP
TOWNSHIP OF HAMILTON
 ATLANTIC COUNTY, NEW JERSEY
 SCALE: 1" = 400'
 DATE: JUNE 1, 1977

RONALD J. PRICE
 PLEASANTVILLE, N.J.
 N.J. LICENSE NO. 13901

REV. BY CHURCHILL - FEB. 2007, FEB. 2008
 REV. BY ALEXANDER M. CHURCHILL ASSOC. - MAR. '96, SEPT. 02

See Adjoining Sheet 25

WPHA 8-16-85
WPHA 8-15-84
WPHA 3-2-84
REVISIONS

See Adjoining Sheet 18

See Adjoining Sheet 17