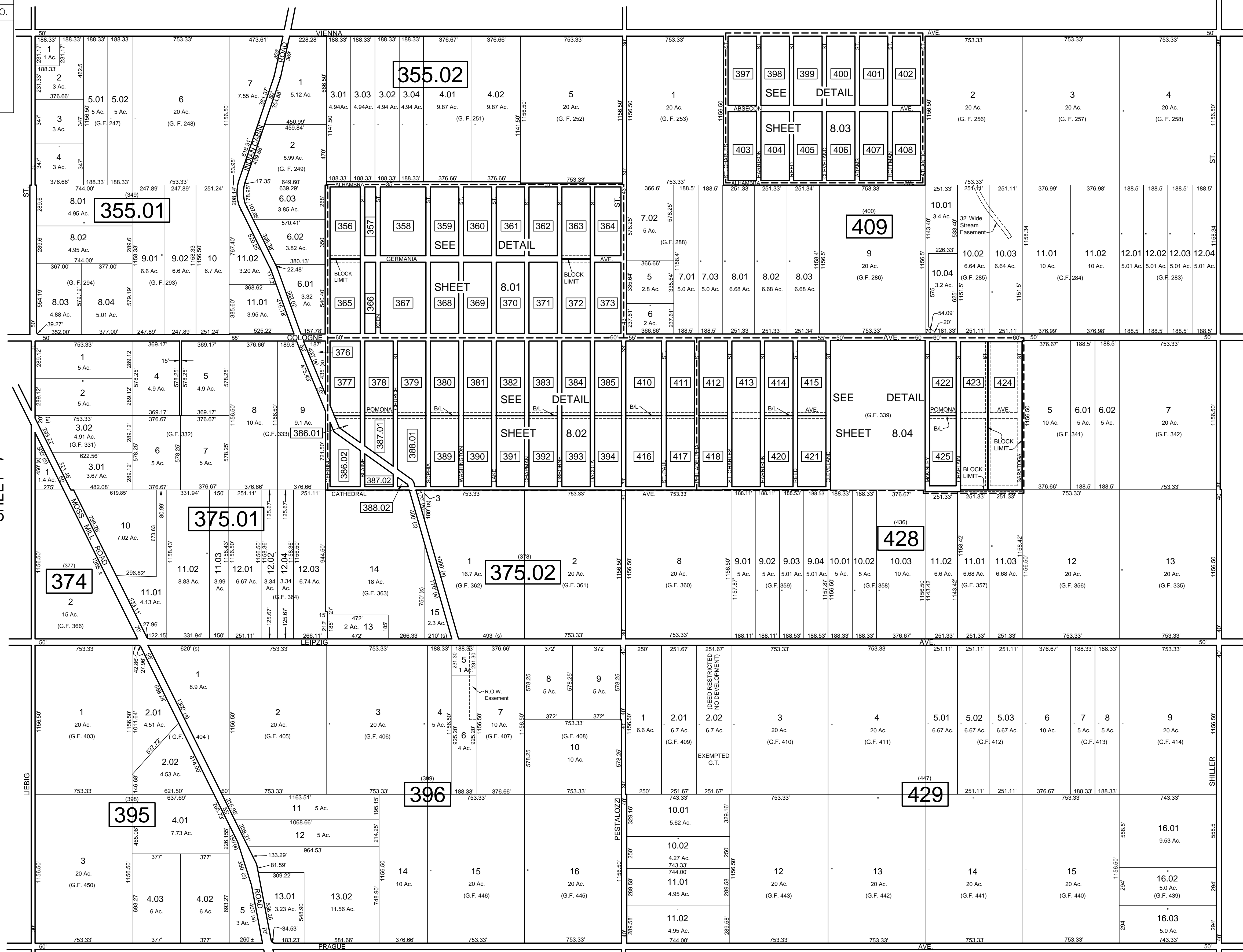
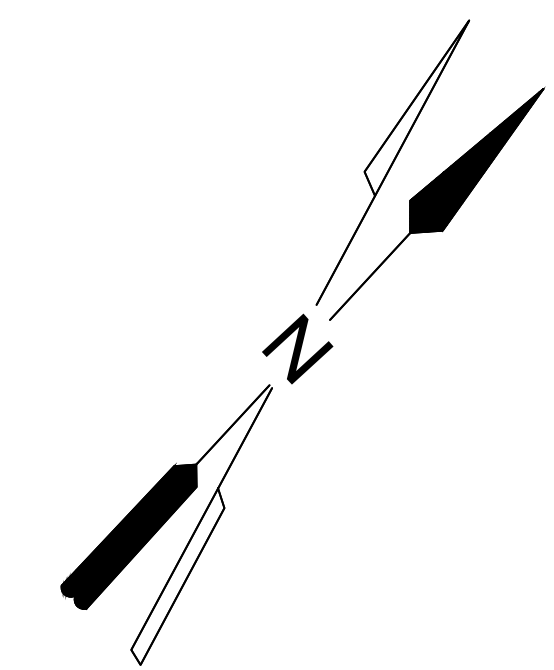


REVISIONS		
DATE	NAME	NO.

SHEET 4



SHEET 7

SHEET 9

LEGEND

BLOCK	SHEET
356-373	8.01
377-394	8.02
397-408	8.03
410-411	8.02
412-415	8.04
416-417	8.02
418-427	8.04

SHEET 13

TAX MAP
 TOWNSHIP OF GALLOWAY
 ATLANTIC COUNTY, NEW JERSEY
 SCALE: 1" = 400' JANUARY 2007
 SAMUEL S. PREVITERA, P.L.S.
 N.J. LIC. NO. 38976
 26 NORTH ROUTE 73, SUITE 200
 CEDAR BROOK, N.J. 08018

NOTE:
 LETTERS "G.F." INDICATES NUMBERS ON MAP OF GLOUCESTER FARM & TOWN ASSOCIATION.
 LETTERS "G.T." INDICATES GALLOWAY TOWNSHIP OWNED PROPERTY.

THIS SHEET HAS BEEN DRAWN USING COMPUTER AIDED DRAFTING / DESIGN (CAD/D) AND WAS DONE UNDER THE SUPERVISION OF SAMUEL S. PREVITERA, P.L.S., NEW JERSEY PROFESSIONAL LAND SURVEYOR LICENSE NO. 38976, AND DATED DECEMBER 31, 2006.