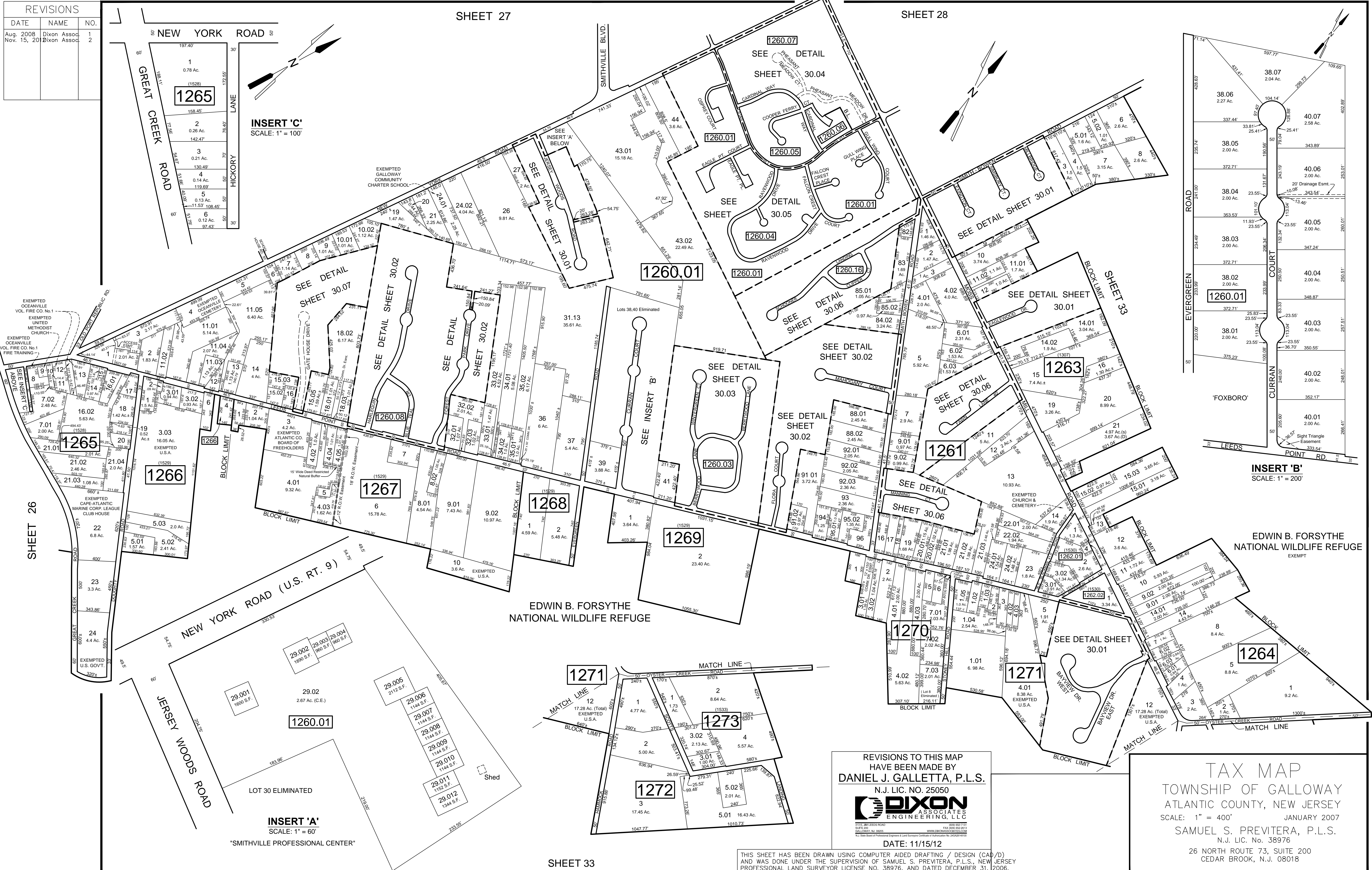


REVISIONS		
DATE	NAME	NO.
Aug. 2008	Dixon Assoc.	1
Nov. 15, 2010	Dixon Assoc.	2



REVISIONS		
DATE	NAME	NO.
Aug. 2008	Dixon Assoc.	1
Nov. 15, 2010	Dixon Assoc.	2

**INSERT 'C'**  
SCALE: 1" = 100'

**INSERT 'A'**  
SCALE: 1" = 60'

**INSERT 'B'**  
SCALE: 1" = 200'

REVISIONS TO THIS MAP  
HAVE BEEN MADE BY  
**DANIEL J. GALLETTA, P.L.S.**  
N.J. LIC. NO. 25050

**DIXON ASSOCIATES ENGINEERING, LLC**  
211 WEST WILSON ROAD  
SUITE 500  
CEDAR BROOK, NJ 08015  
TEL: 908-682-8800 FAX: 908-682-8810  
WWW.DIXONASSOCIATES.COM  
Not a State of Professional Engineers & Land Surveyors Certificate of Association No. 34542(0101)

DATE: 11/15/12

**TAX MAP**  
TOWNSHIP OF GALLOWAY  
ATLANTIC COUNTY, NEW JERSEY  
SCALE: 1" = 400' JANUARY 2007  
**SAMUEL S. PREVITERA, P.L.S.**  
N.J. LIC. No. 38976  
26 NORTH ROUTE 73, SUITE 200  
CEDAR BROOK, N.J. 08018

THIS SHEET HAS BEEN DRAWN USING COMPUTER AIDED DRAFTING / DESIGN (CAD/D) AND WAS DONE UNDER THE SUPERVISION OF SAMUEL S. PREVITERA, P.L.S., NEW JERSEY PROFESSIONAL LAND SURVEYOR LICENSE NO. 38976, AND DATED DECEMBER 31, 2006.