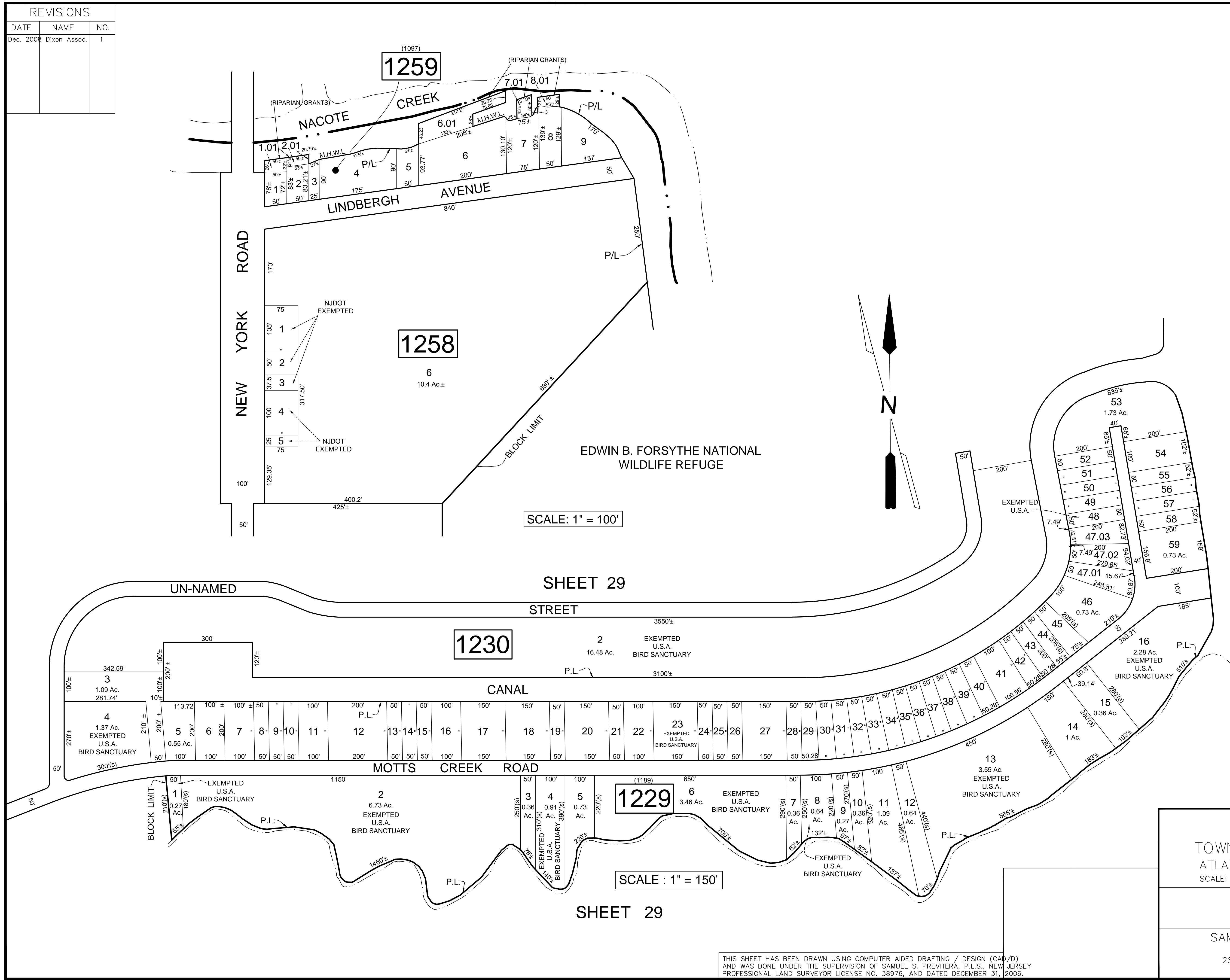


REVISIONS		
DATE	NAME	NO.
Dec. 2008	Dixon Assoc.	1



EDWIN B. FORSYTHE NATIONAL WILDLIFE REFUGE

TAX MAP
 TOWNSHIP OF GALLOWAY
 ATLANTIC COUNTY, NEW JERSEY
 SCALE: AS NOTED AUGUST 2008

DIXON ASSOCIATES
 313 E. JIMMIE LEEDS RD.,
 GALLOWAY, N.J. 08205

SAMUEL S. PREVITERA, P.L.S.
 N.J. LIC. No. 38976
 26 NORTH ROUTE 73, SUITE 200
 CEDAR BROOK, N.J. 08018

THIS SHEET HAS BEEN DRAWN USING COMPUTER AIDED DRAFTING / DESIGN (CAD/D) AND WAS DONE UNDER THE SUPERVISION OF SAMUEL S. PREVITERA, P.L.S., NEW JERSEY PROFESSIONAL LAND SURVEYOR LICENSE NO. 38976, AND DATED DECEMBER 31, 2006.