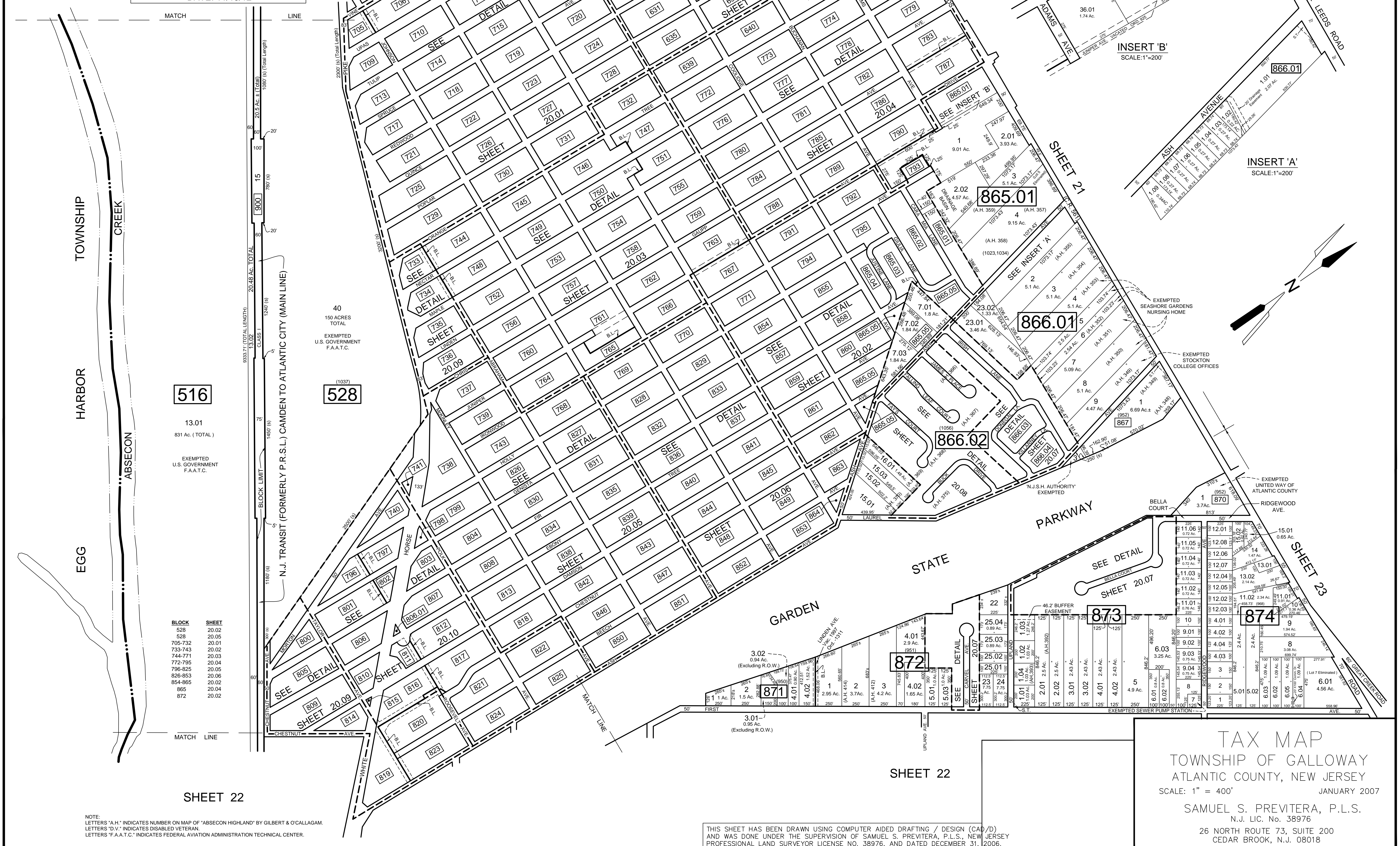


REVISIONS		
DATE	NAME	NO.
Aug. 2008	Dixon Assoc.	1
Nov. 15, 2010	Dixon Assoc.	2

REVISIONS TO THIS MAP
HAVE BEEN MADE BY
DANIEL J. GALLETTA, P.L.S.
N.J. LIC. NO. 25050

DATE: 11/15/12

SHEET 16



516

13.01
831 Ac. (TOTAL)
EXEMPTED
U.S. GOVERNMENT
F.A.A.T.C.

528

BLOCK	SHEET
528	20.02
528	20.05
705-732	20.01
733-743	20.02
744-771	20.03
772-795	20.04
796-825	20.05
826-853	20.06
854-865	20.02
865	20.04
872	20.02

SHEET 22

NOTE:
LETTERS "A.H." INDICATES NUMBER ON MAP OF "ABSECON HIGHLAND" BY GILBERT & O'CALLAGHAN.
LETTERS "D.V." INDICATES DISABLED VETERAN.
LETTERS "F.A.A.T.C." INDICATES FEDERAL AVIATION ADMINISTRATION TECHNICAL CENTER.

THIS SHEET HAS BEEN DRAWN USING COMPUTER AIDED DRAFTING / DESIGN (CAD/D) AND WAS DONE UNDER THE SUPERVISION OF SAMUEL S. PREVITERA, P.L.S., NEW JERSEY PROFESSIONAL LAND SURVEYOR LICENSE NO. 38976, AND DATED DECEMBER 31, 2006.

TAX MAP
TOWNSHIP OF GALLOWAY
ATLANTIC COUNTY, NEW JERSEY
SCALE: 1" = 400'
JANUARY 2007

SAMUEL S. PREVITERA, P.L.S.
N.J. LIC. No. 38976

26 NORTH ROUTE 73, SUITE 200
CEDAR BROOK, N.J. 08018

