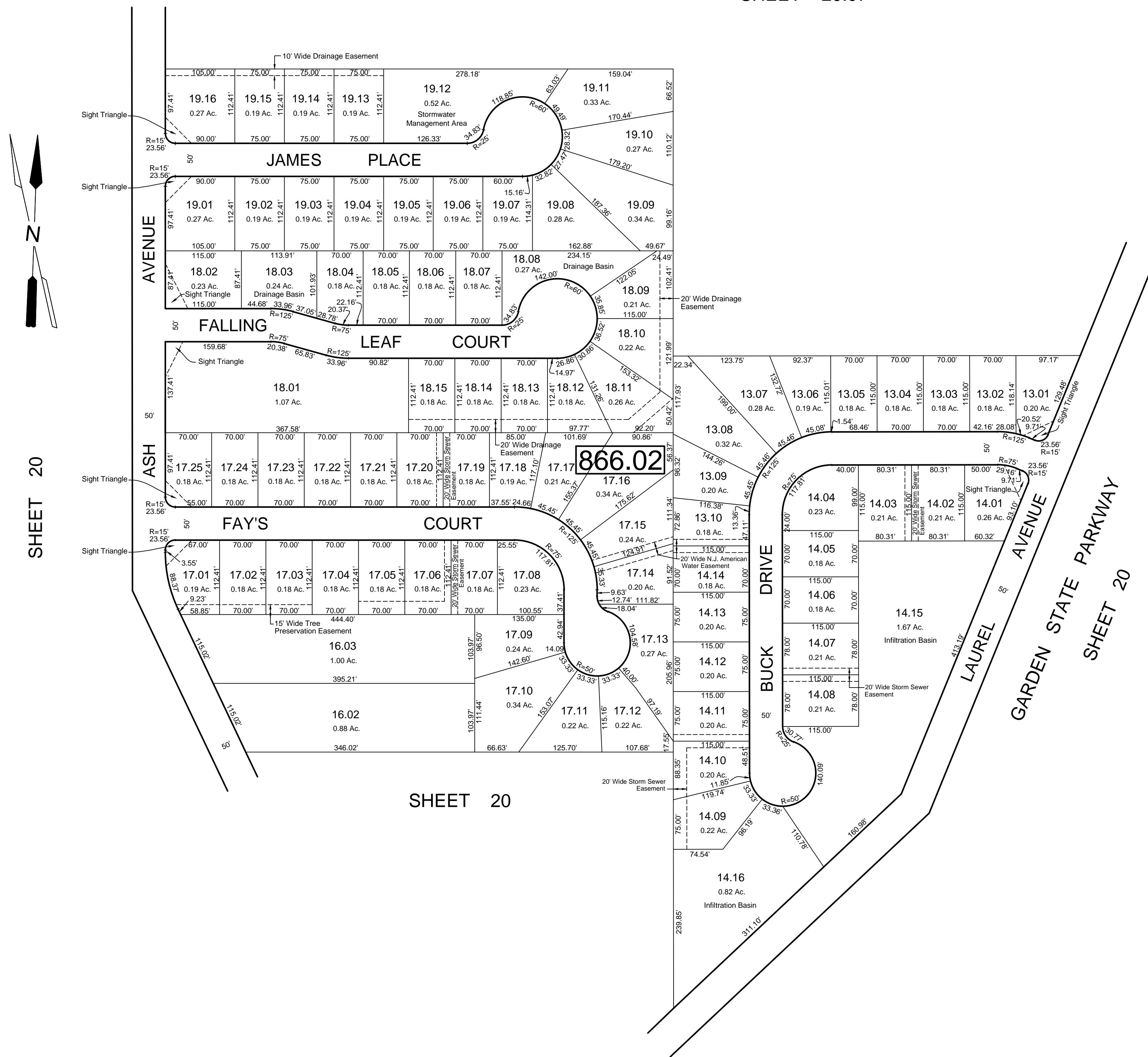


REVISIONS		
DATE	NAME	NO.
Nov. 15, 2011	Dixon Assoc.	1

SHEET 20.07



SHEET 20

REVISIONS TO THIS MAP
 HAVE BEEN MADE BY
DANIEL J. GALLETTA, P.L.S.
 N.J. LIC. NO. 25050

DATE: 11/15/12

TAX MAP
 TOWNSHIP OF GALLOWAY
 ATLANTIC COUNTY, NEW JERSEY
 SCALE: 1" = 100' MARCH 2005

DIXON ASSOCIATES
 335 E. JIMMIE LEEDS RD.,
 GALLOWAY, N.J. 08205

SAMUEL S. PREVITERA, P.L.S.
 N.J. LIC. No. 38976

26 NORTH ROUTE 73, SUITE 200
 CEDAR BROOK, N.J. 08018

THIS SHEET HAS BEEN DRAWN USING COMPUTER AIDED DRAFTING / DESIGN (CAD/D)
 AND WAS DONE UNDER THE SUPERVISION OF SAMUEL S. PREVITERA, P.L.S., NEW JERSEY
 PROFESSIONAL LAND SURVEYOR LICENSE NO. 38976, AND DATED DECEMBER 31, 2006.