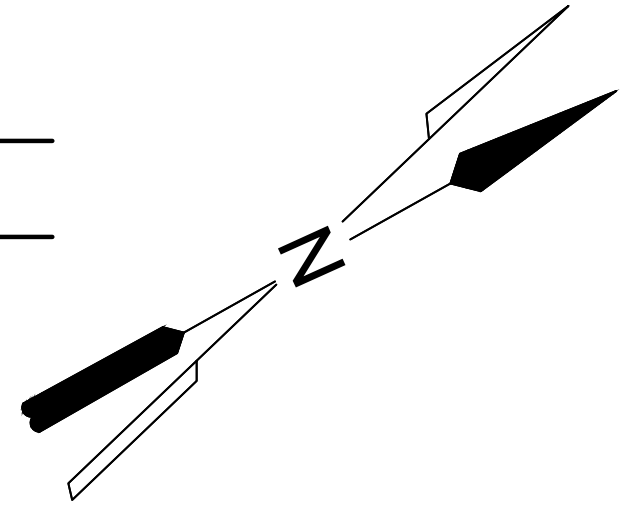
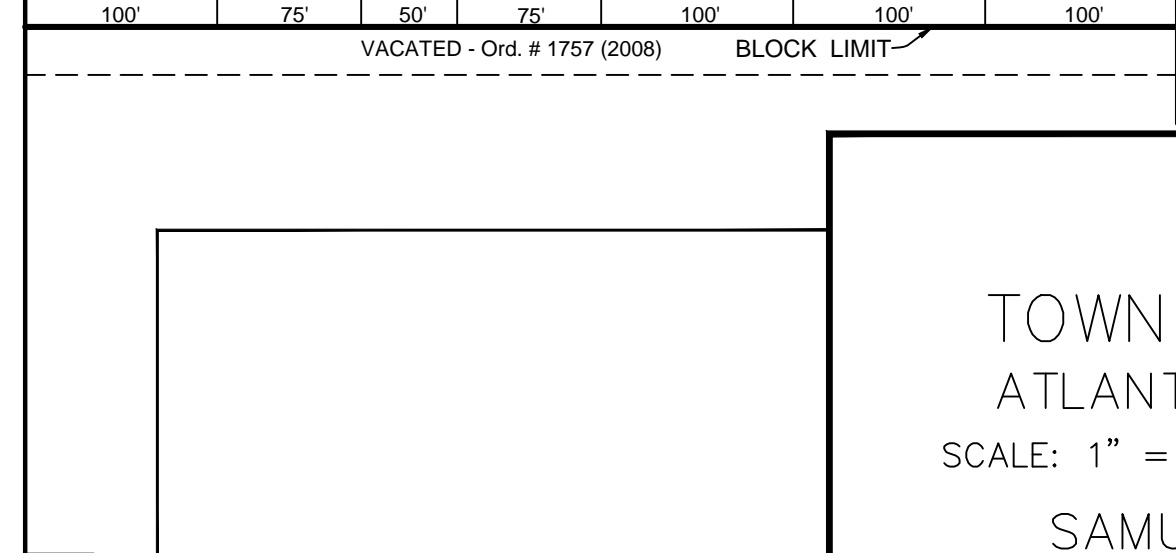
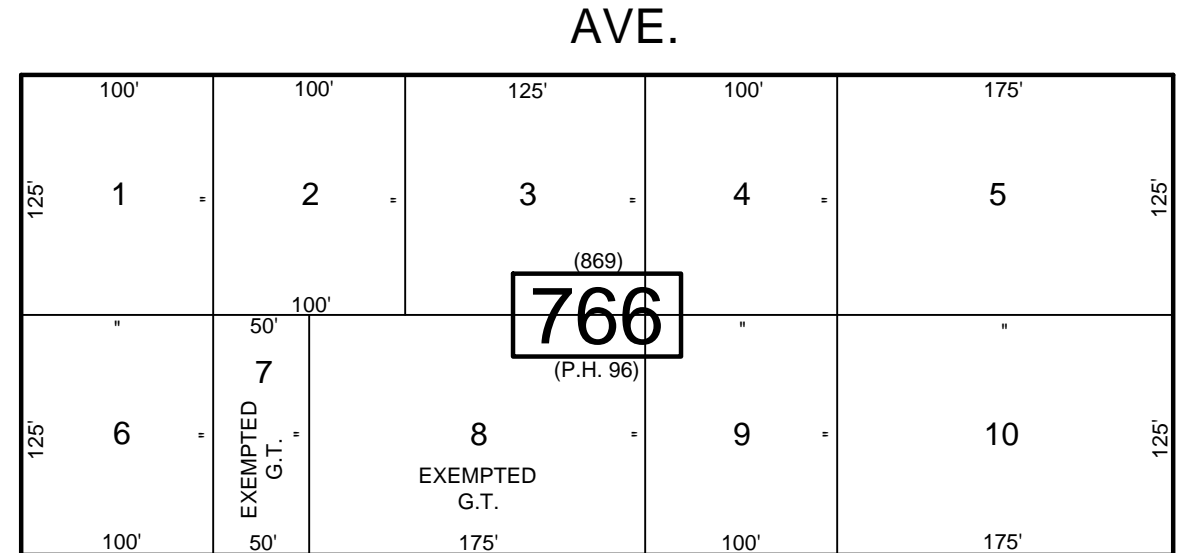
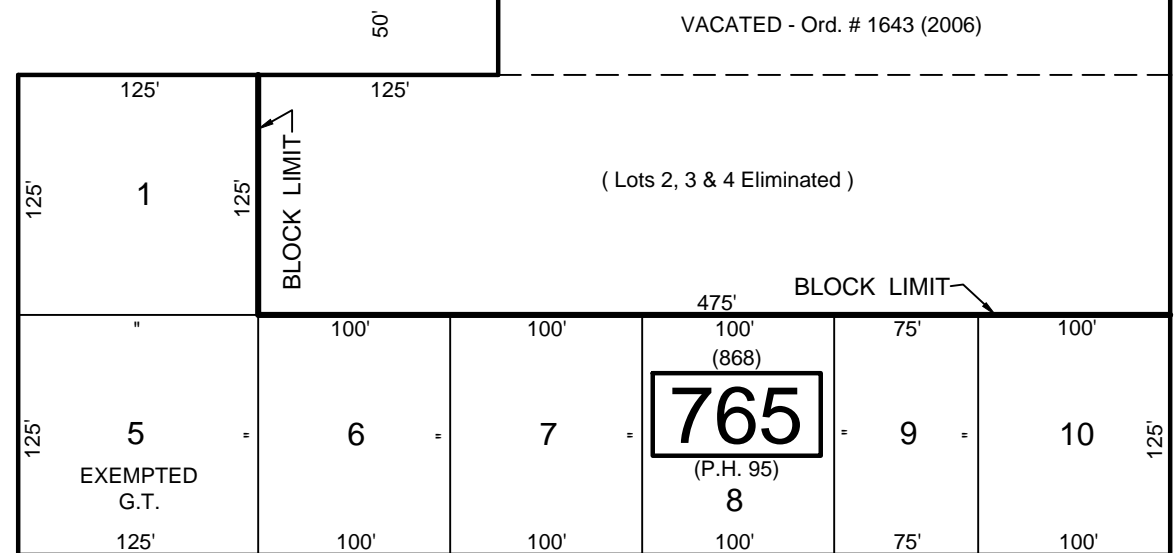
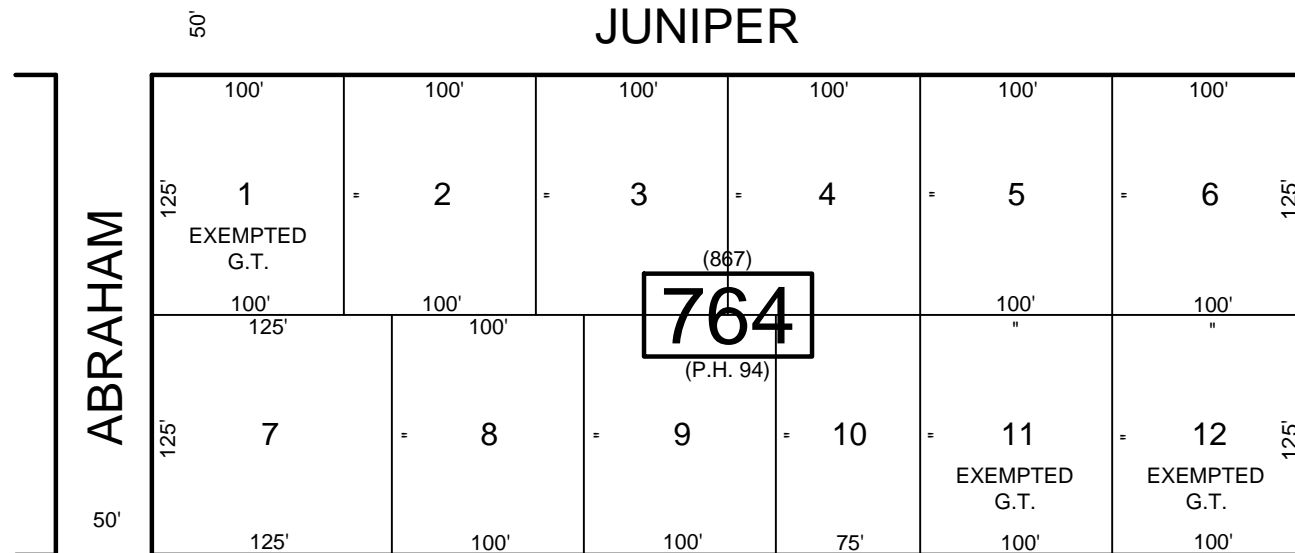
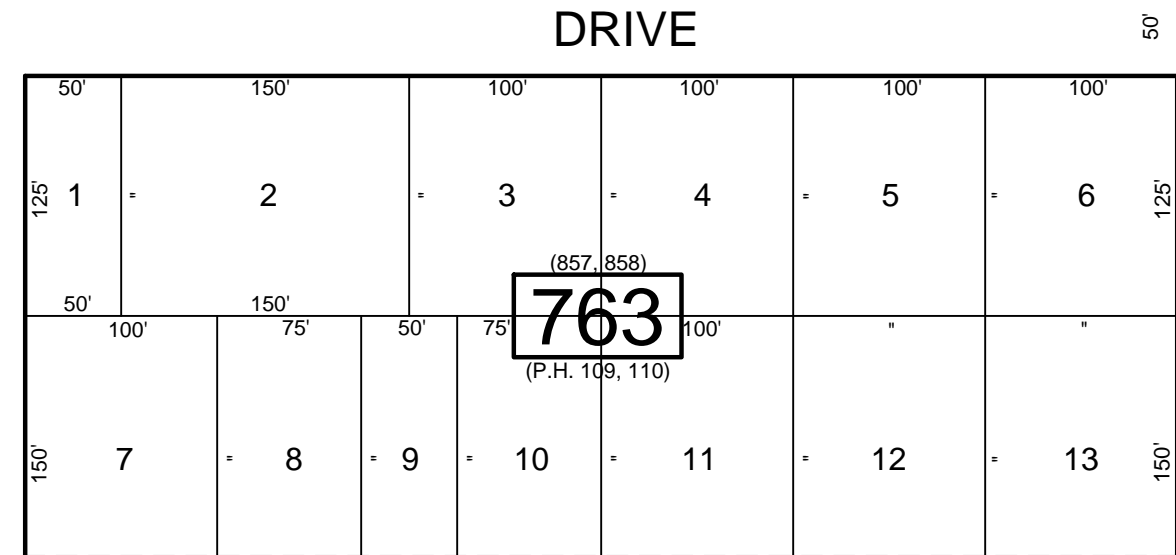
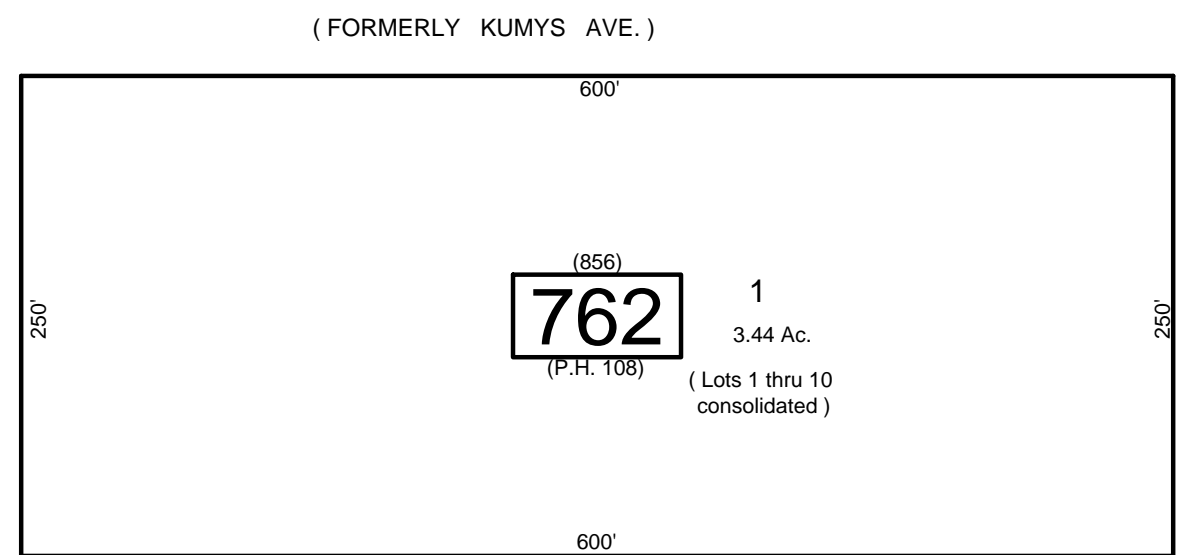
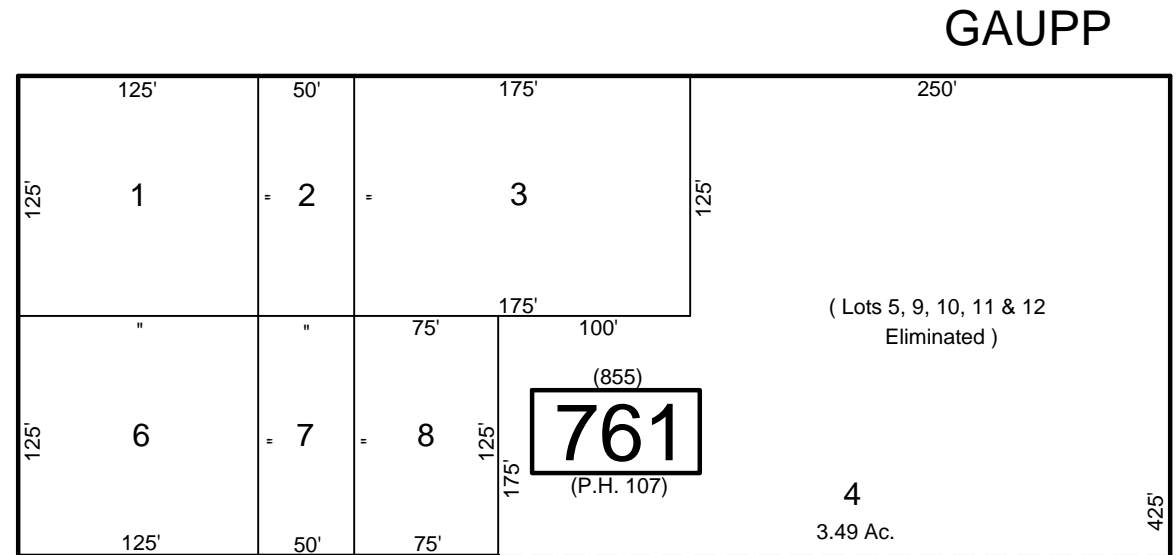
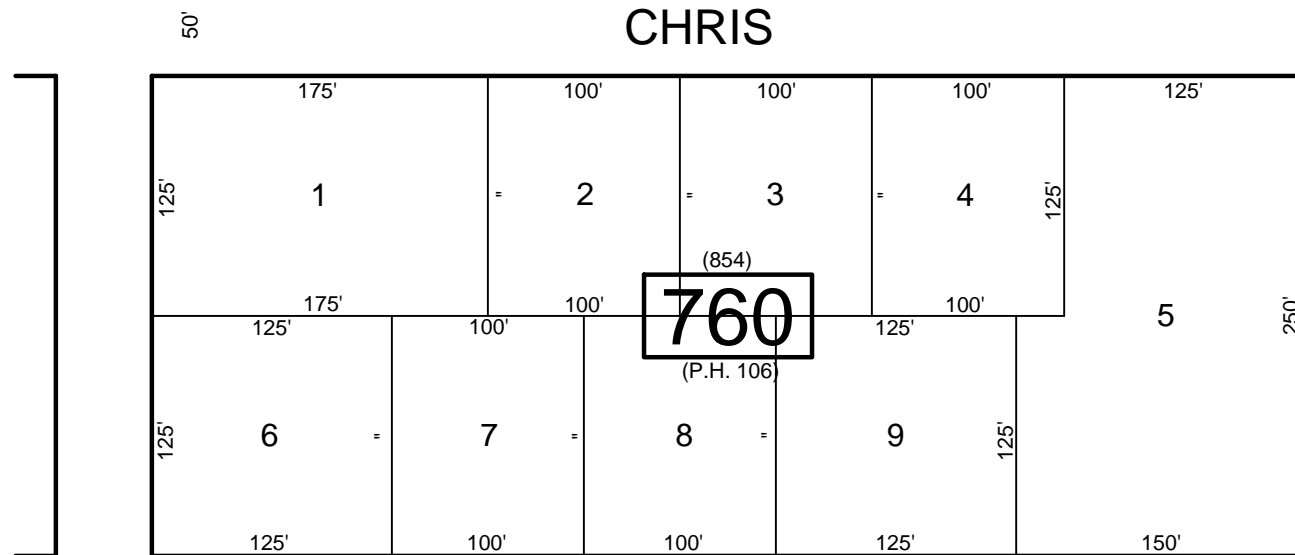
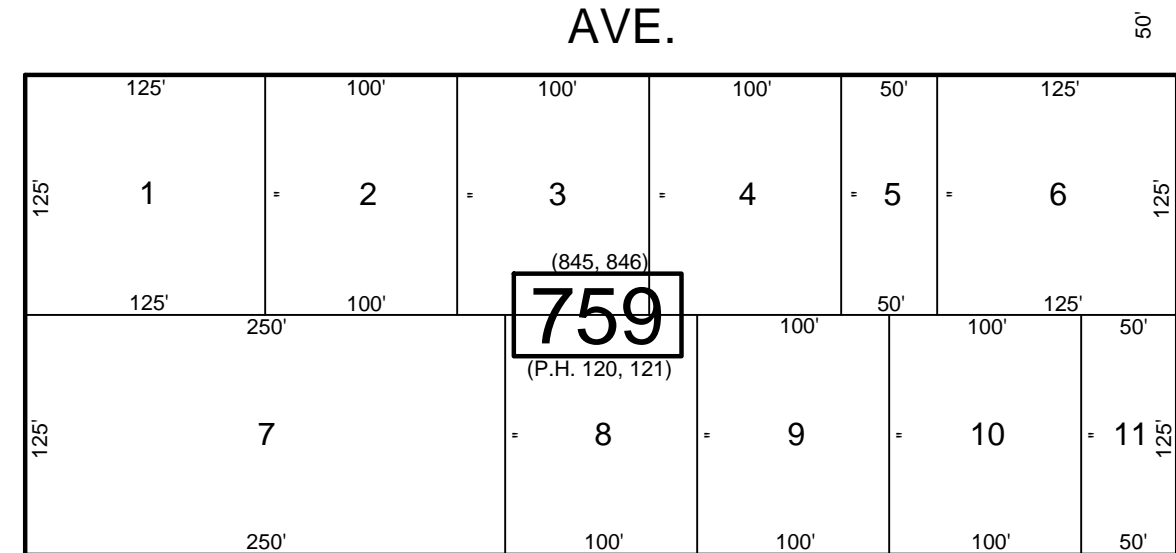
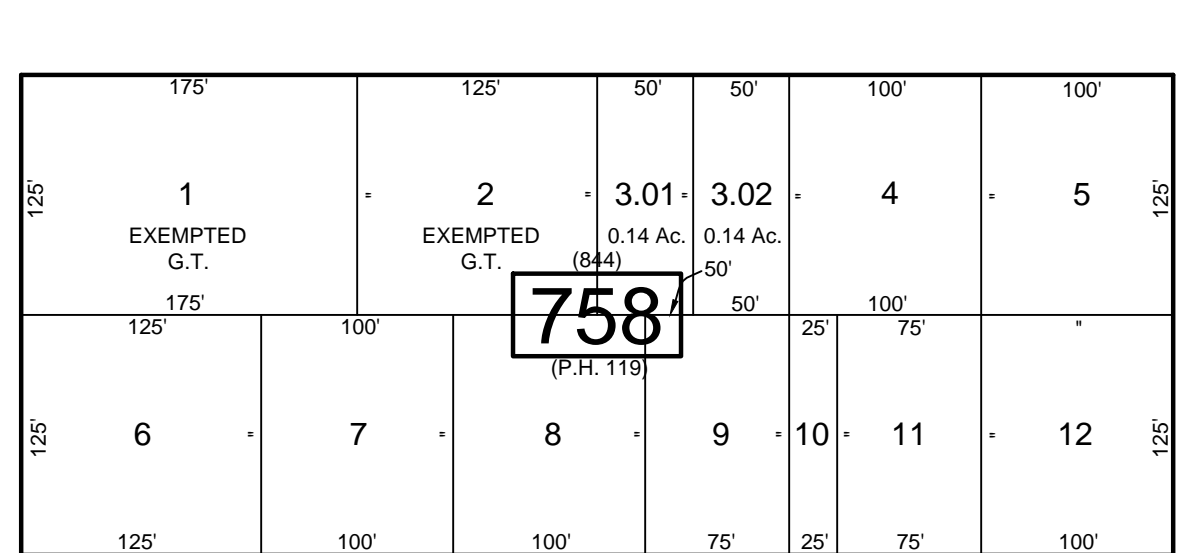
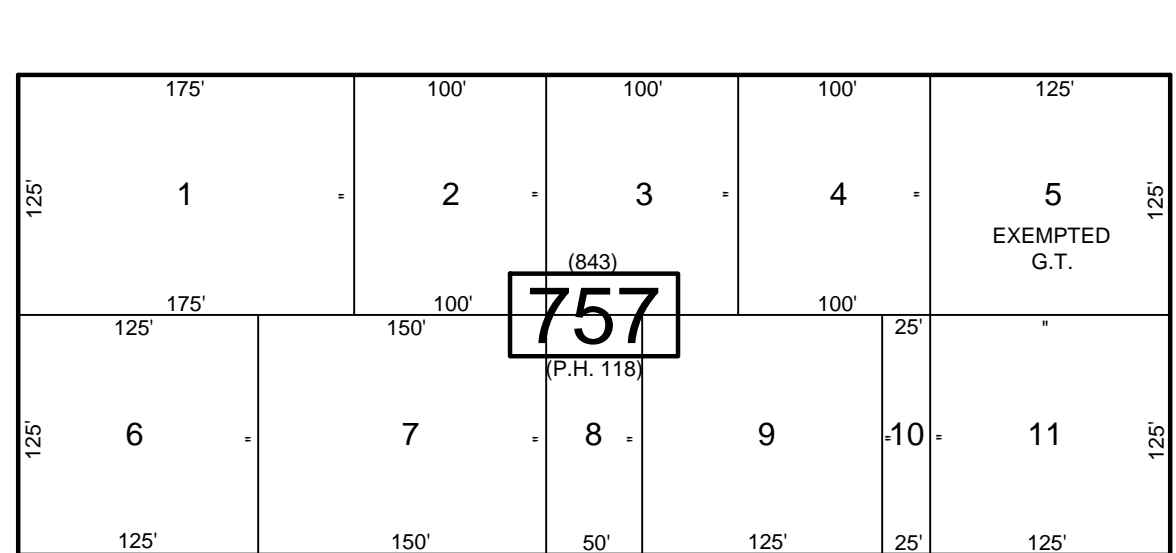
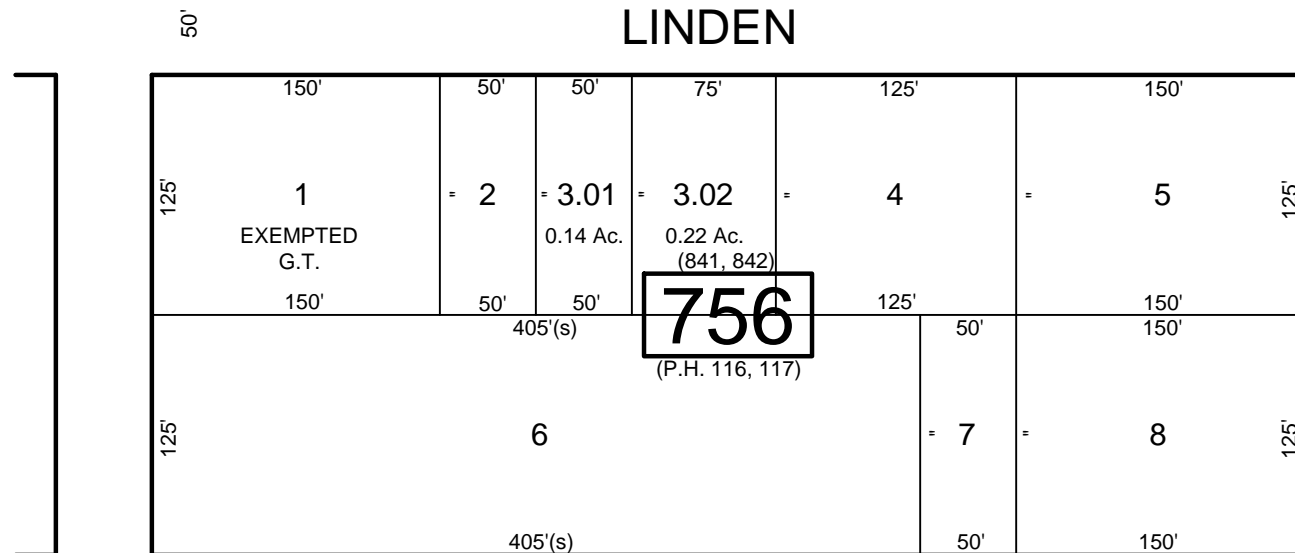
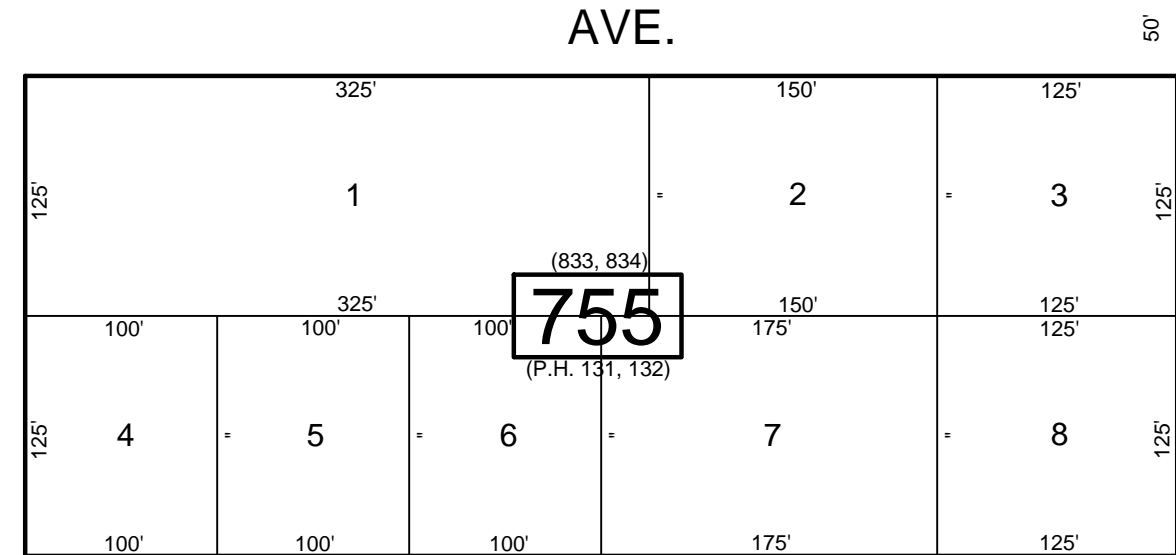
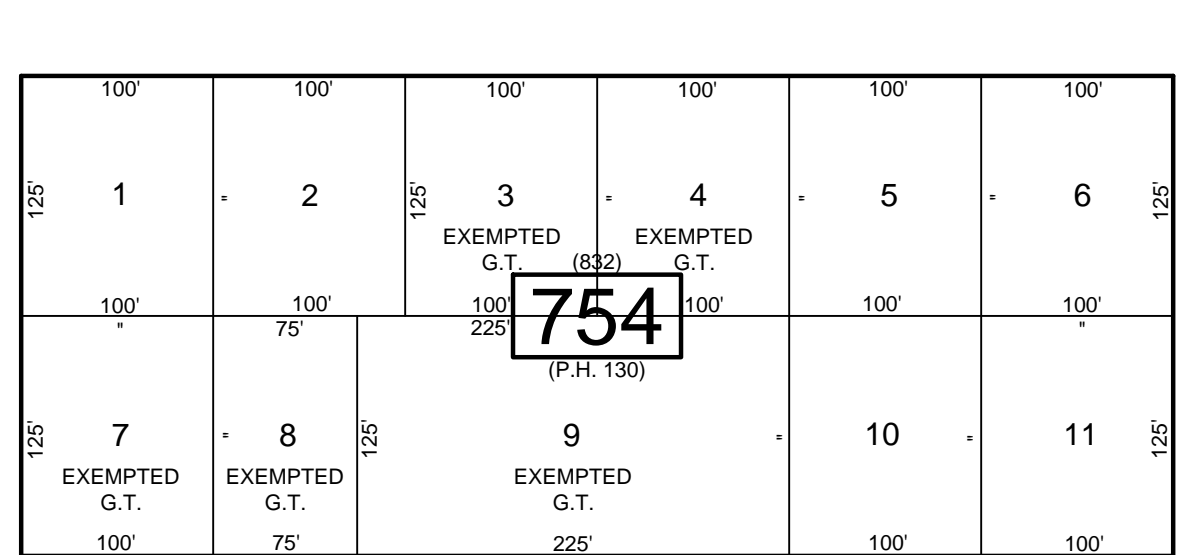
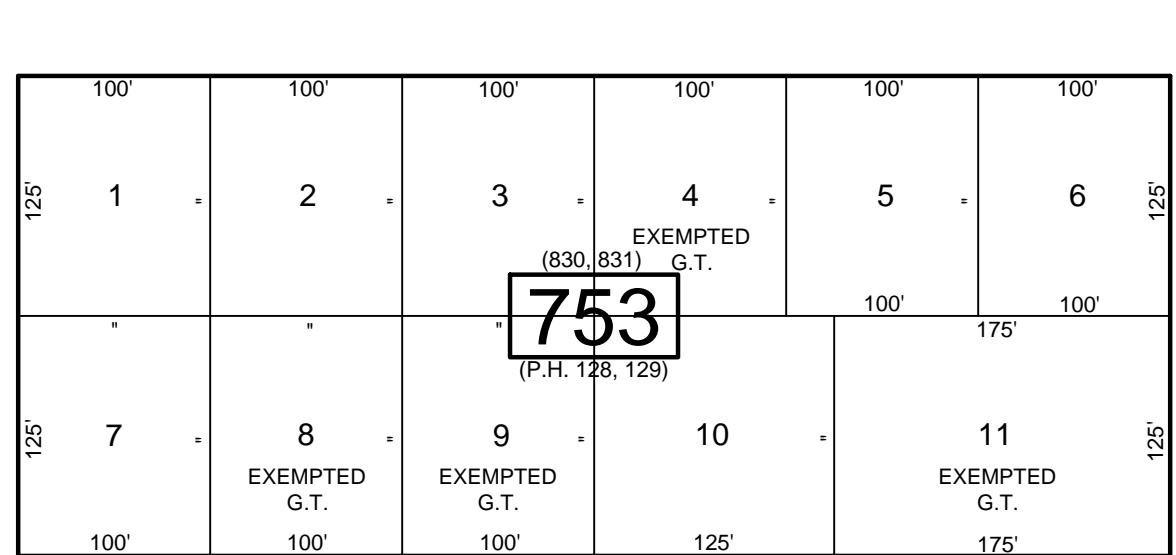
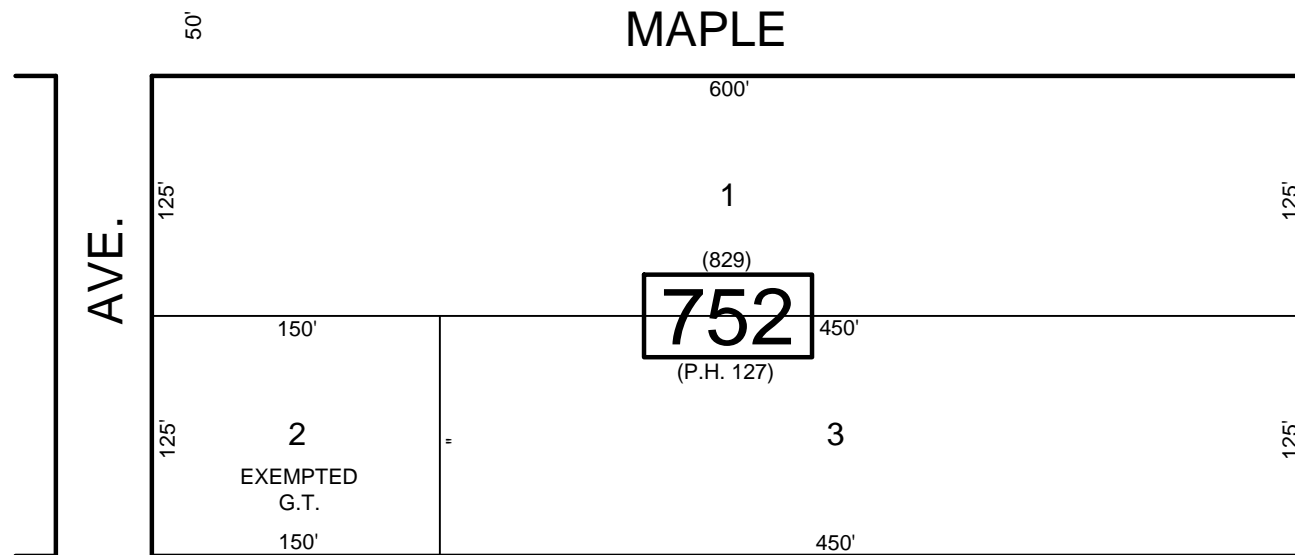
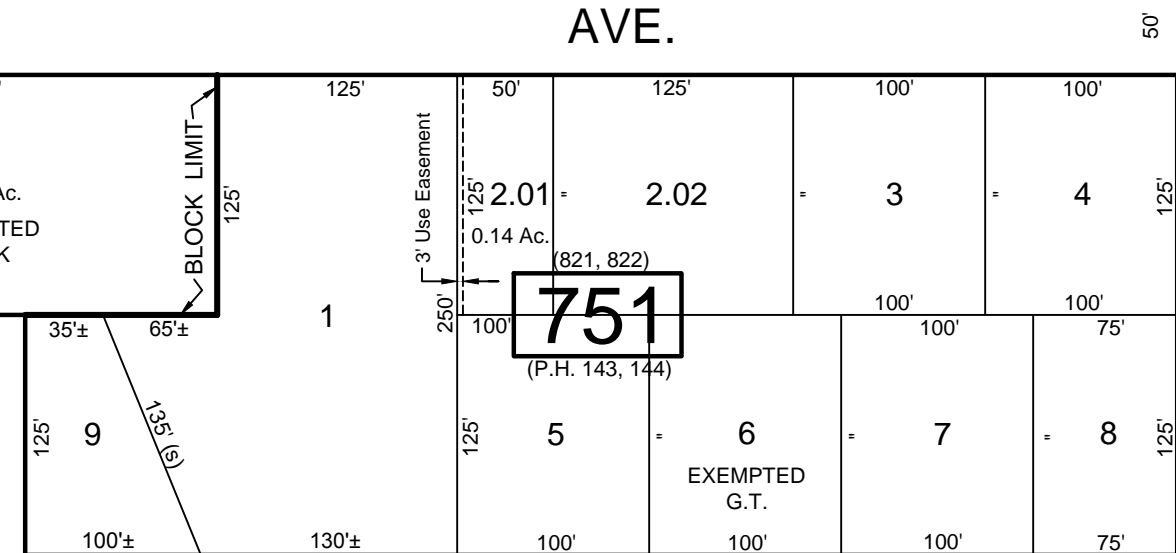
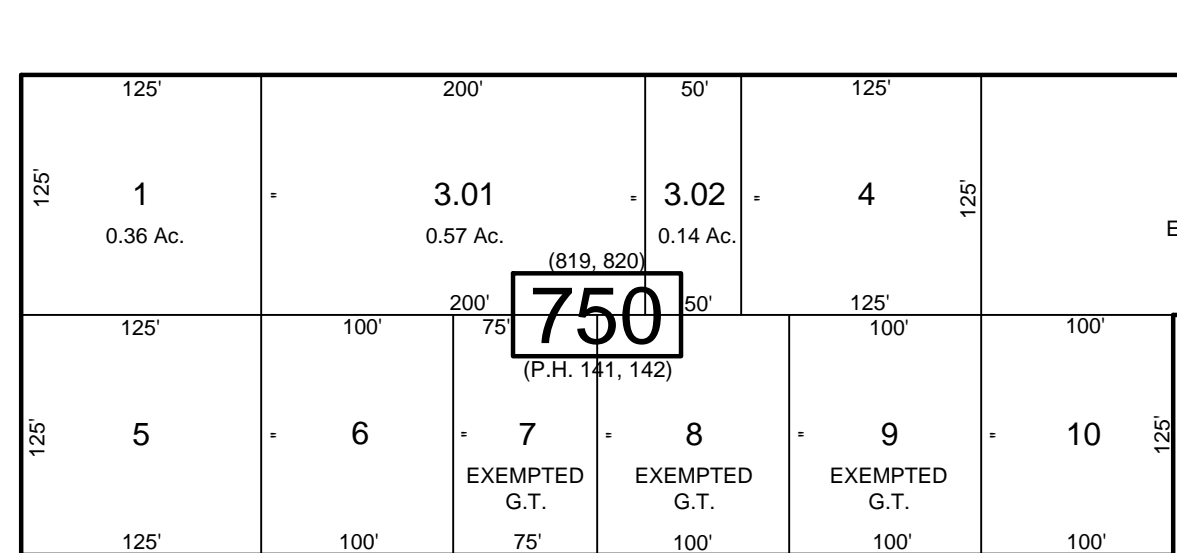
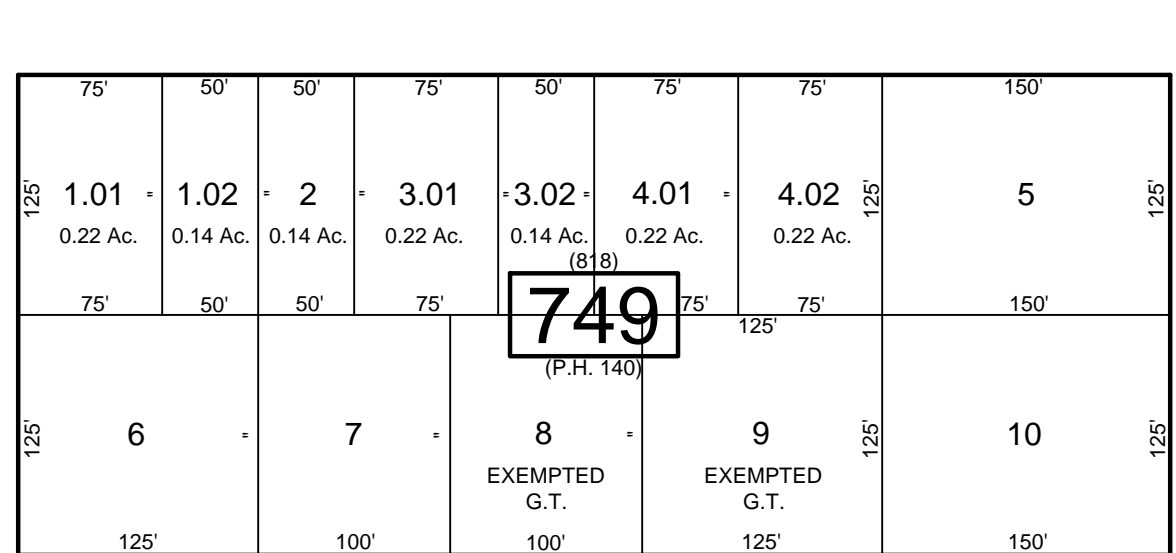
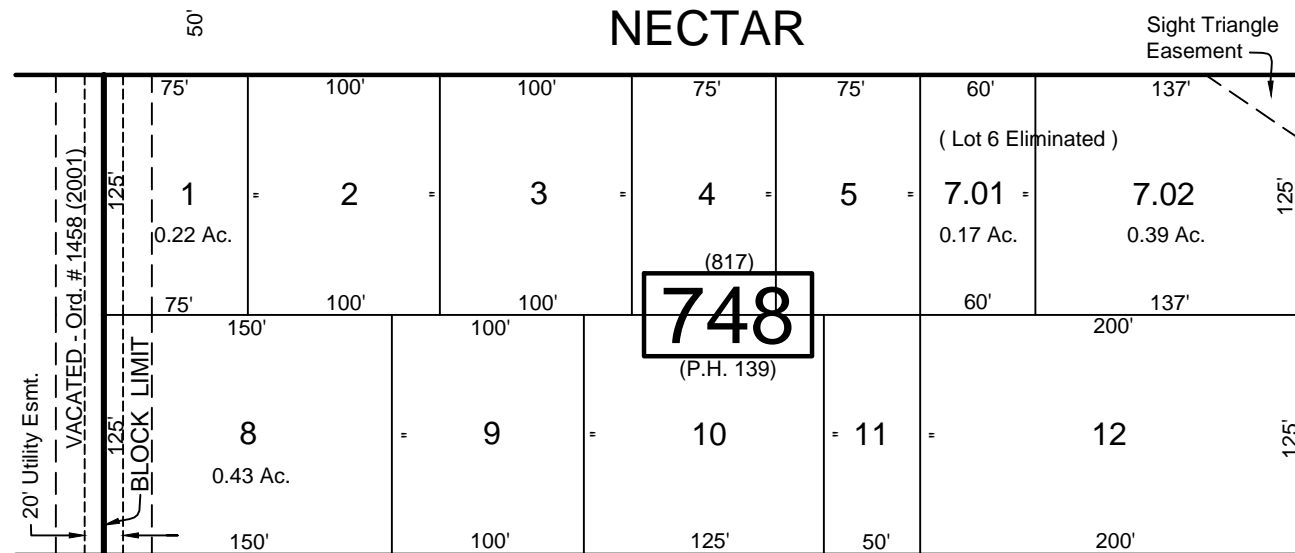
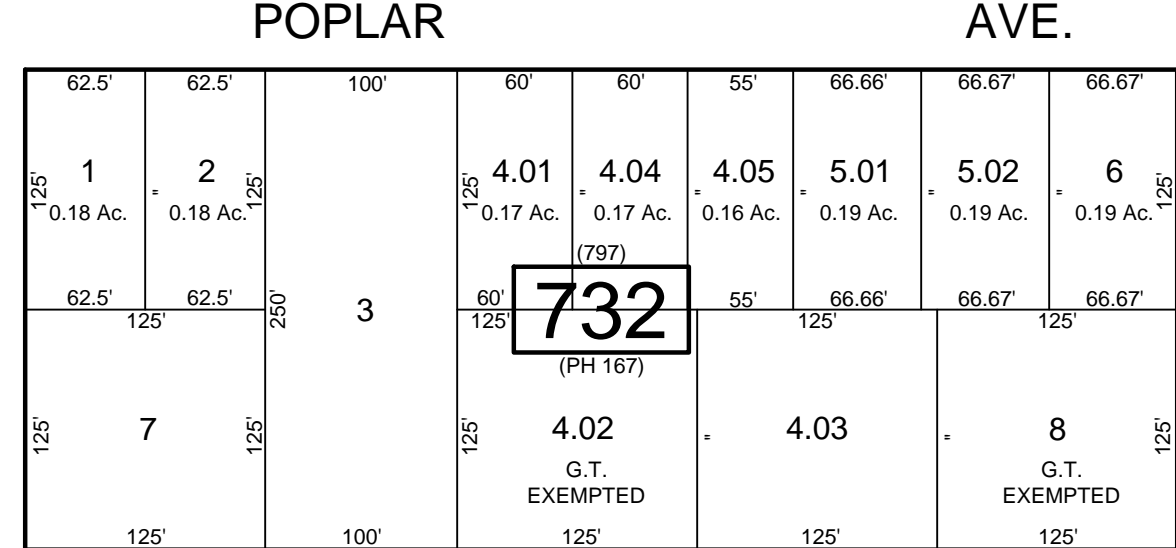
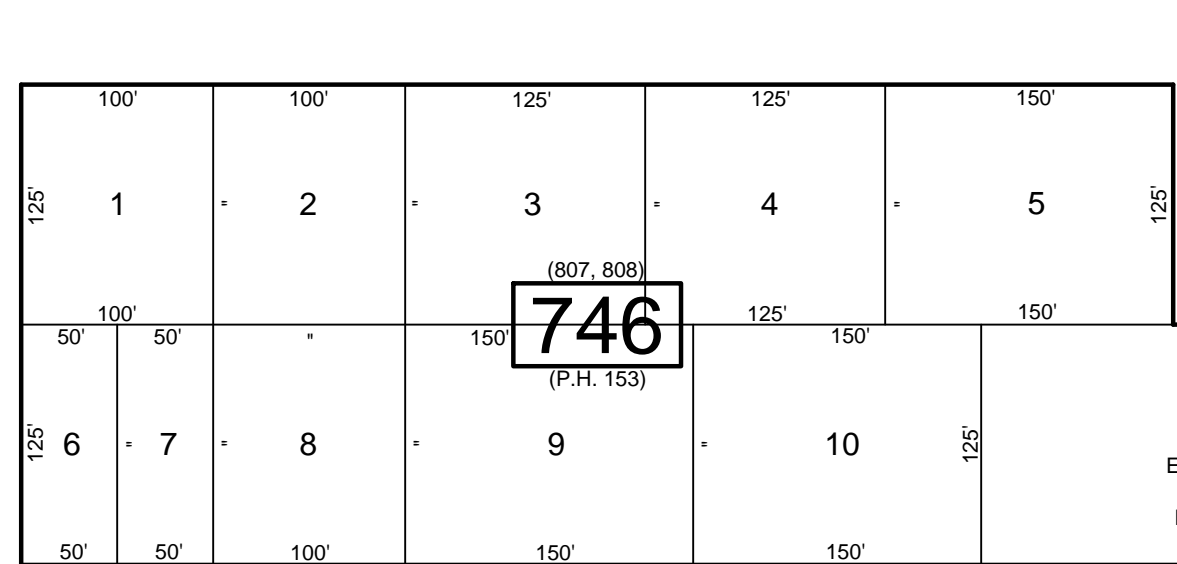
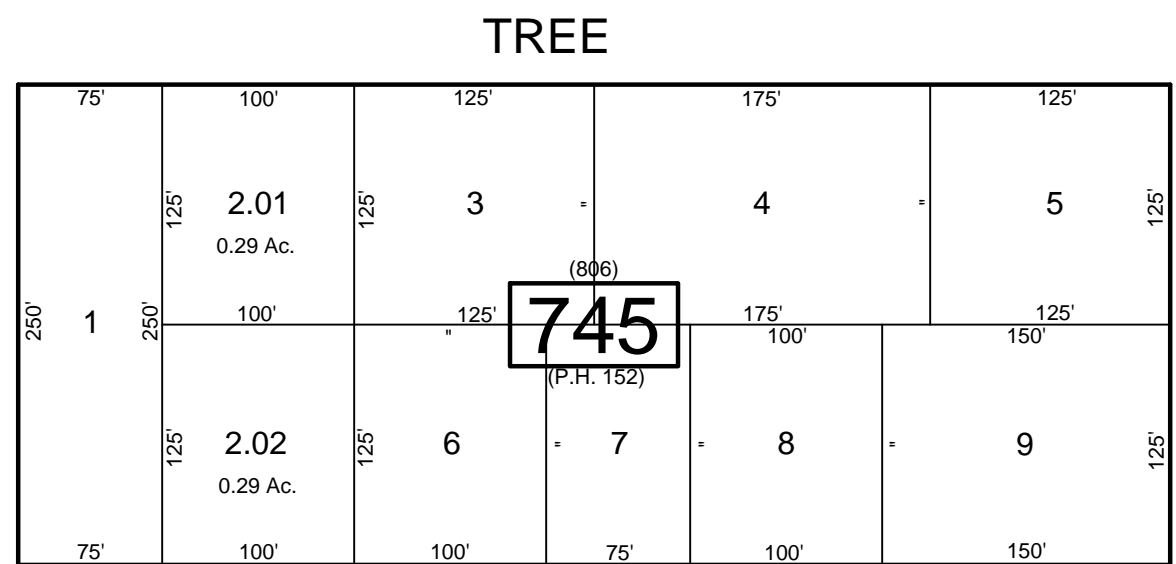
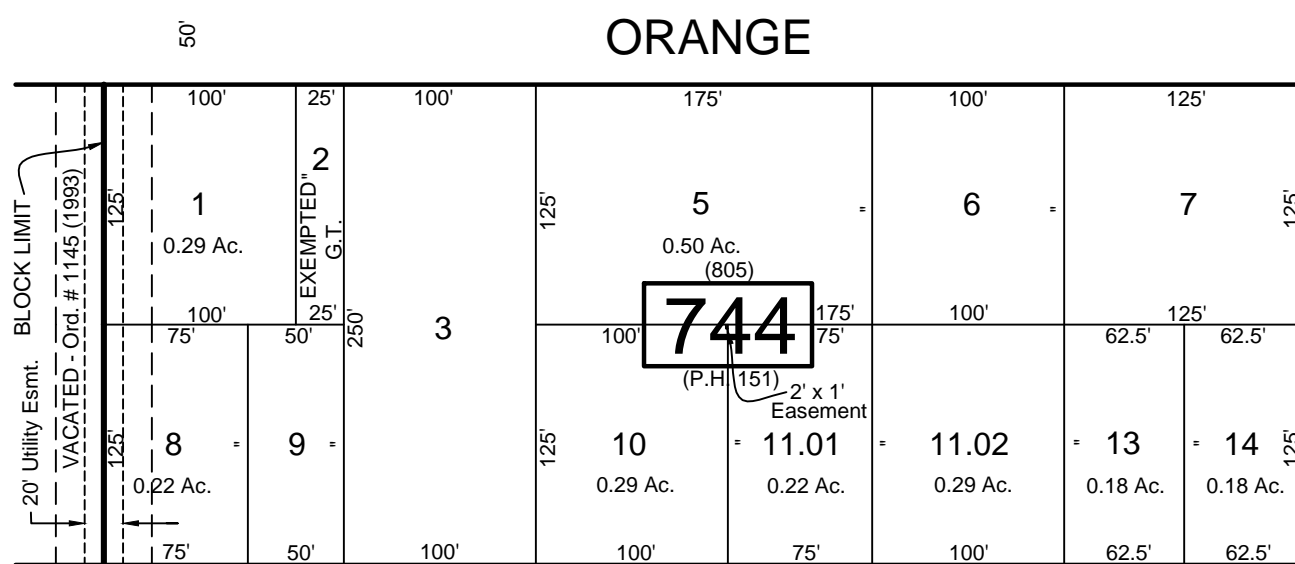


REVISIONS		
DATE	NAME	NO.
Aug. 2008	Dixon Assoc.	1
Nov. 15, 2012	Dixon Assoc.	2

REVISIONS TO THIS MAP  
HAVE BEEN MADE BY  
**DANIEL J. GALLETTA, P.L.S.**  
N.J. LIC. NO. 25050  
**DIXON ASSOCIATES  
ENGINEERING, LLC**  
151 E. MAIN STREET, SUITE 200  
MORRISTOWN, NJ 07960  
TEL: 908-882-7971 FAX: 908-882-2615  
E-MAIL: dgalletta@dxnassoc.com WWW.DIXONASSOCIATES.COM  
No. State Board of Professional Engineers & Land Surveyors Certificate of Authorization No. 2502018102  
DATE: 11/15/12

SHEET 20.01



SHEET 20.09

SHEET 20.05

SHEET 20.04

FILMORE

**TAX MAP**  
TOWNSHIP OF GALLOWAY  
ATLANTIC COUNTY, NEW JERSEY  
SCALE: 1" = 100'  
JANUARY 2007  
SAMUEL S. PREVITERA, P.L.S.  
N.J. LIC. No. 38976  
26 NORTH ROUTE 73, SUITE 200  
CEDAR BROOK, N.J. 08018

NOTE: LETTERS "P.H." INDICATES NUMBER ON MAP OF "PINEHURST" BY PINEHURST DEV. CO.  
LETTERS "G.T." INDICATES GALLOWAY TOWNSHIP OWNED PROPERTY.

THIS SHEET HAS BEEN DRAWN USING COMPUTER AIDED DRAFTING / DESIGN (CAD/D)  
AND WAS DONE UNDER THE SUPERVISION OF SAMUEL S. PREVITERA, P.L.S., NEW JERSEY  
PROFESSIONAL LAND SURVEYOR LICENSE NO. 38976, AND DATED DECEMBER 31, 2006.