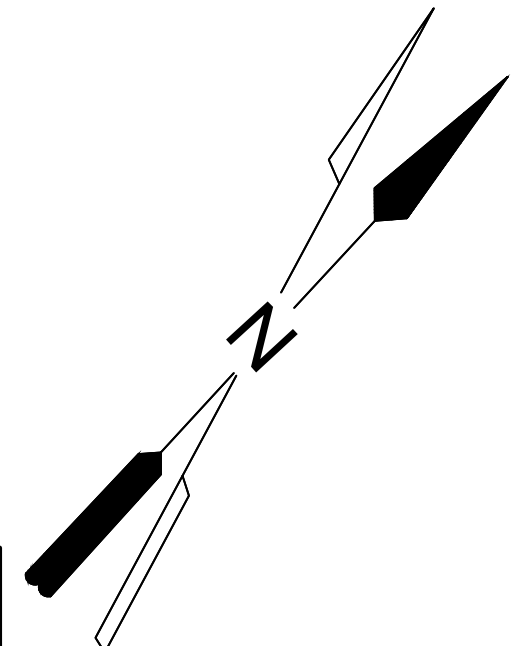
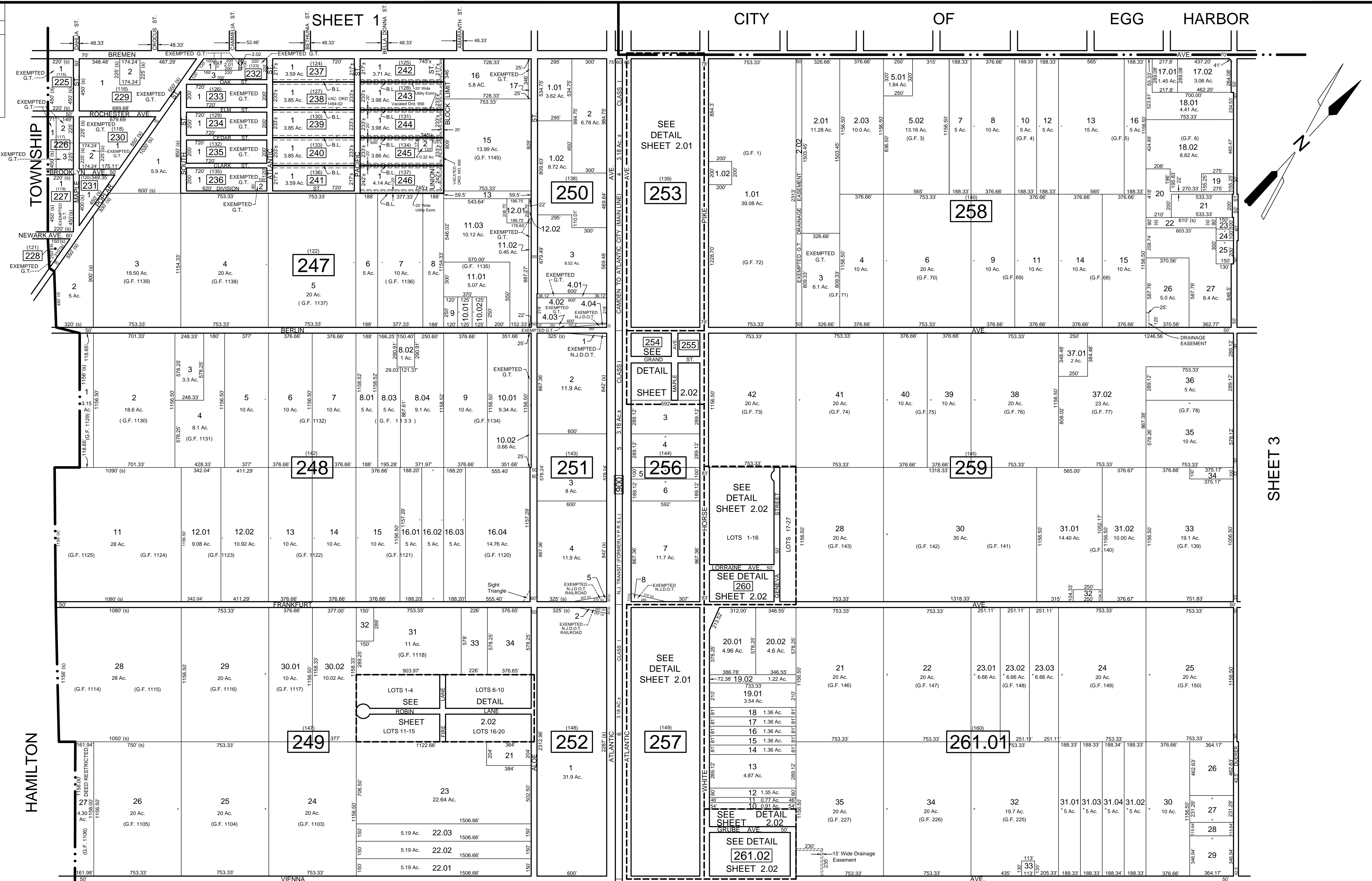


REVISIONS		
DATE	NAME	NO.
Aug. 2008	Dixon Assoc.	1
Nov. 15, 2011	Dixon Assoc.	2



HAMILTON

SHEET 3

LEGEND

BLOCK	SHEET
253 & 257	2.01
249	2.02
254-256	2.02
259-261.02	2.02

NOTE:
LETTERS "G.F." INDICATES NUMBER ON MAP OF GLOUCESTER FARM & TOWN ASSOCIATION
LETTERS "G.T." INDICATES GALLOWAY TOWNSHIP OWNED PROPERTY.

REVISIONS TO THIS MAP
HAVE BEEN MADE BY
DANIEL J. GALLETTA, P.L.S.
N.J. LIC. NO. 25050

DATE: 11/15/12

SHEET 6

THIS SHEET HAS BEEN DRAWN USING COMPUTER AIDED DRAFTING / DESIGN (CAD/D) AND WAS DONE UNDER THE SUPERVISION OF SAMUEL S. PREVITERA, P.L.S., NEW JERSEY PROFESSIONAL LAND SURVEYOR LICENSE NO. 36976, AND DATED DECEMBER 31, 2006.

TAX MAP
TOWNSHIP OF GALLOWAY
ATLANTIC COUNTY, NEW JERSEY
SCALE: 1" = 400'
JANUARY 2007

SAMUEL S. PREVITERA, P.L.S.
N.J. LIC. NO. 36976
26 NORTH ROUTE 73, SUITE 200
CEDAR BROOK, N.J. 08018