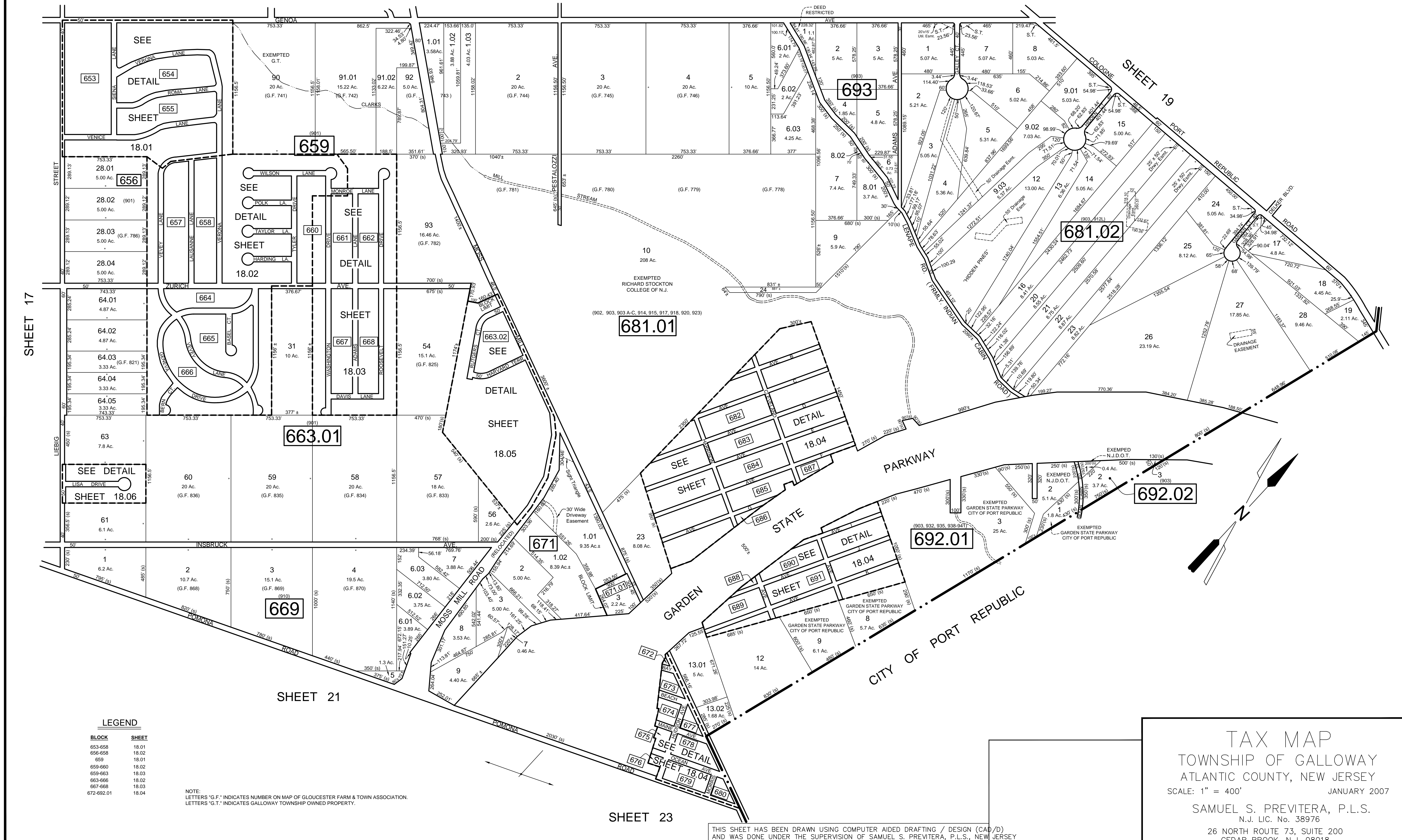


REVISIONS		
DATE	NAME	NO.
Aug. 2008	Dixon Assoc.	1

SHEET 13



LEGEND

BLOCK	SHEET
653-658	18.01
659-658	18.02
659	18.01
659-660	18.02
659-663	18.03
663-666	18.02
667-669	18.03
672-692.01	18.04

NOTE:
 LETTERS "G.F." INDICATES NUMBER ON MAP OF GLOUCESTER FARM & TOWN ASSOCIATION.
 LETTERS "G.T." INDICATES GALLOWAY TOWNSHIP OWNED PROPERTY.

TAX MAP
 TOWNSHIP OF GALLOWAY
 ATLANTIC COUNTY, NEW JERSEY
 SCALE: 1" = 400' JANUARY 2007
 SAMUEL S. PREVITERA, P.L.S.
 N.J. LIC. No. 38976
 26 NORTH ROUTE 73, SUITE 200
 CEDAR BROOK, N.J. 08018

THIS SHEET HAS BEEN DRAWN USING COMPUTER AIDED DRAFTING / DESIGN (CAD/D) AND WAS DONE UNDER THE SUPERVISION OF SAMUEL S. PREVITERA, P.L.S., NEW JERSEY PROFESSIONAL LAND SURVEYOR LICENSE NO. 38976, AND DATED DECEMBER 31, 2006.