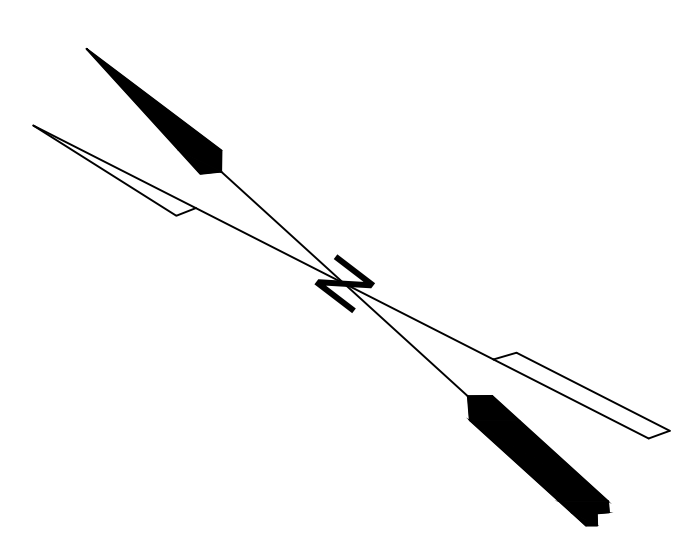
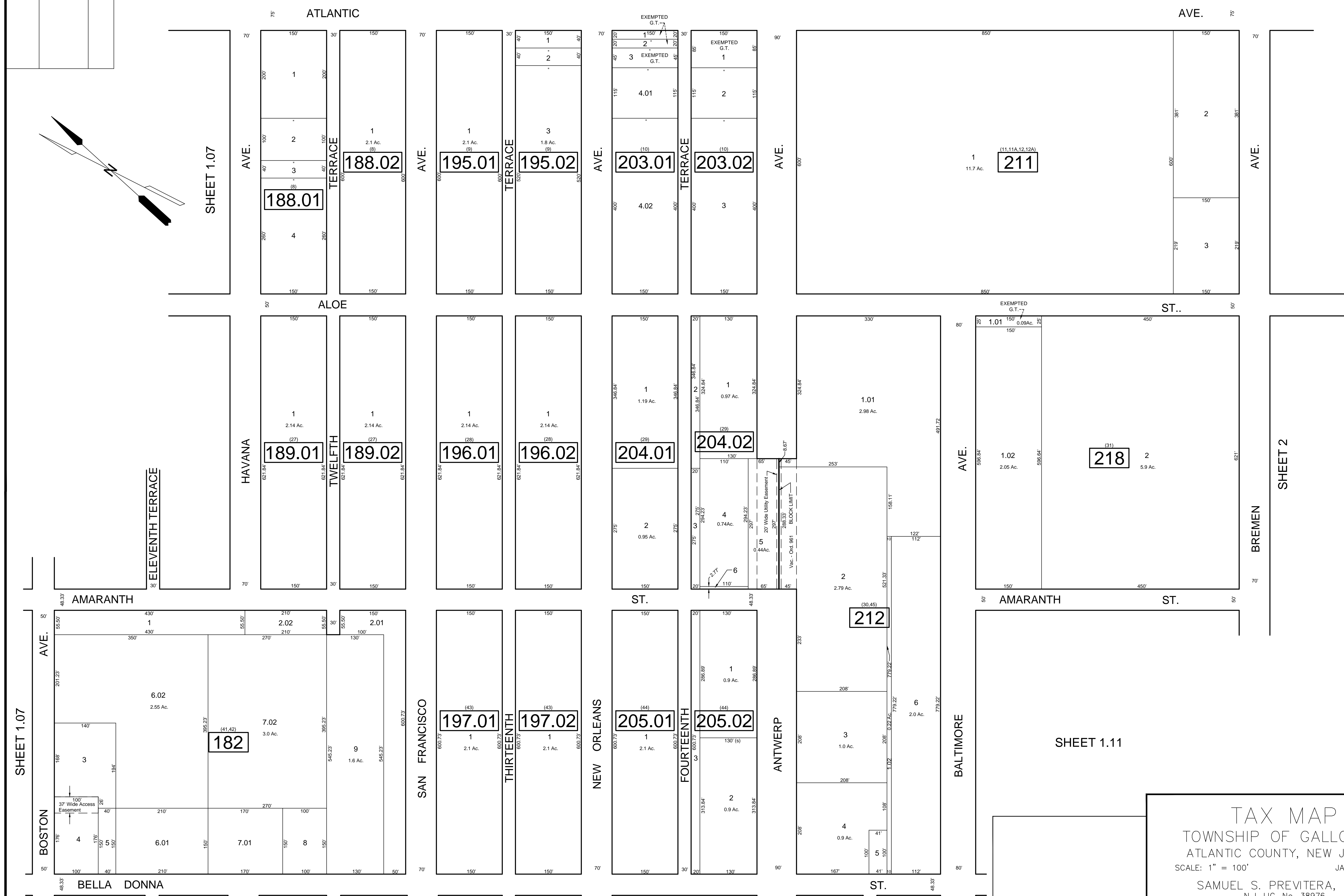


REVISIONS		
DATE	NAME	NO.
Aug. 2008	Dixon Assoc.	1

CITY OF EGG HARBOR

N.J. TRANSIT (FORMERLY P.R.S.L.) CAMDEN TO ATLANTIC CITY-MAIN LINE

2 2.37 AC.± 900 3 0.16 AC.± CLASS I



SHEET 1.07

SHEET 1.08

SHEET 1.11

SHEET 1.11

SHEET 2

NOTE:
LETTERS G.T. INDICATES GALLOWAY TOWNSHIP OWNED PROPERTY.

THIS SHEET HAS BEEN DRAWN USING COMPUTER AIDED DRAFTING / DESIGN (CAD/D) AND WAS DONE UNDER THE SUPERVISION OF SAMUEL S. PREVITERA, P.L.S., NEW JERSEY PROFESSIONAL LAND SURVEYOR LICENSE NO. 38976, AND DATED DECEMBER 31, 2006.

TAX MAP
 TOWNSHIP OF GALLOWAY
 ATLANTIC COUNTY, NEW JERSEY
 SCALE: 1" = 100'
 JANUARY 2007
 SAMUEL S. PREVITERA, P.L.S.
 N.J. LIC. No. 38976
 26 NORTH ROUTE 73, SUITE 200
 CEDAR BROOK, N.J. 08018