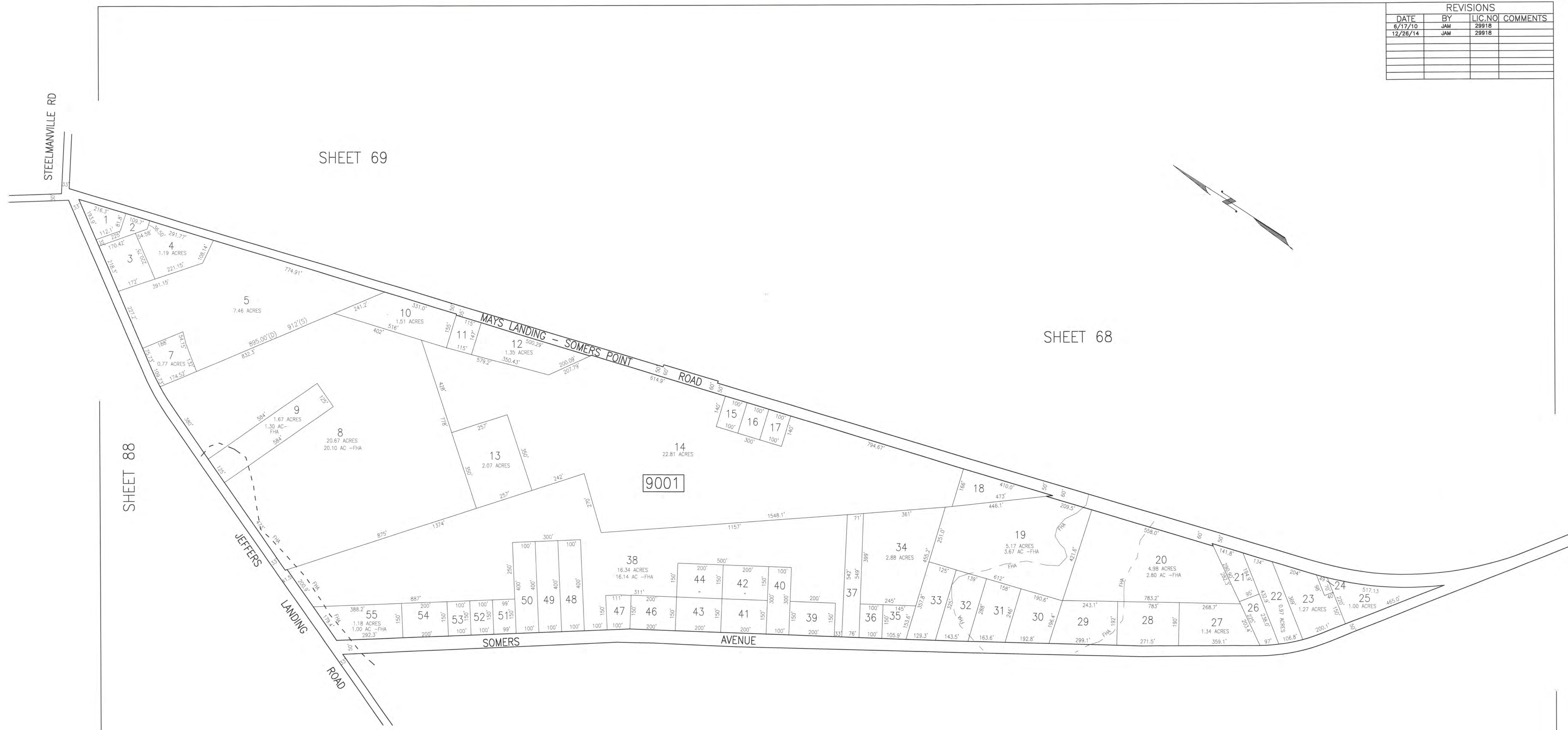


REVISIONS			
DATE	BY	LIC. NO	COMMENTS
6/17/10	JAM	29918	
12/26/14	JAM	29918	



TAX MAP  
 TOWNSHIP OF EGG HARBOR  
 ATLANTIC COUNTY, NEW JERSEY  
 SCALE: 1"=200' JANUARY 2008  
 JAMES A. MOTT, PE, PLS  
 PROFESSIONAL ENGINEER & LAND SURVEYOR  
 NEW JERSEY LICENSE NO. 29918  
 3122 FIRE ROAD  
 EGG HARBOR TOWNSHIP, NJ 08234

THIS SHEET HAS BEEN DRAWN USING  
 COMPUTER AIDED DRAFTING/DESIGN (CAD/D).