

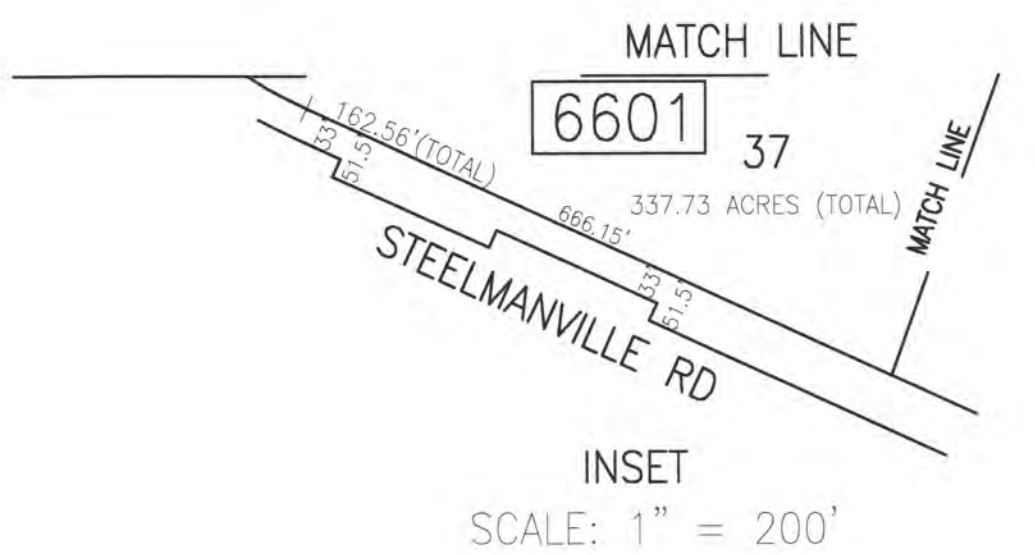
SHEET 66.02

SHEET 66

SHEET 69

REVISIONS			
DATE	BY	LIC. NO.	COMMENTS
6/21/10	JAM	29918	
12/28/14	JAM	29918	
2/28/17	JAM	29918	

THIS SHEET HAS BEEN DRAWN USING COMPUTER AIDED DRAFTING/DESIGN (CAD/D).



TAX MAP
 TOWNSHIP OF EGG HARBOR
 ATLANTIC COUNTY, NEW JERSEY
 SCALE: 1"=200' JANUARY 2008
 JAMES A. MOTT, PE, PLS
 PROFESSIONAL ENGINEER & LAND SURVEYOR
 NEW JERSEY LICENSE NO. 29918
 3122 FIRE ROAD
 EGG HARBOR TOWNSHIP, NJ 08234

SHADED AREAS INDICATE EGG HARBOR TOWNSHIP EXEMPTED PROPERTY

MATCH LINE (SEE INSET)