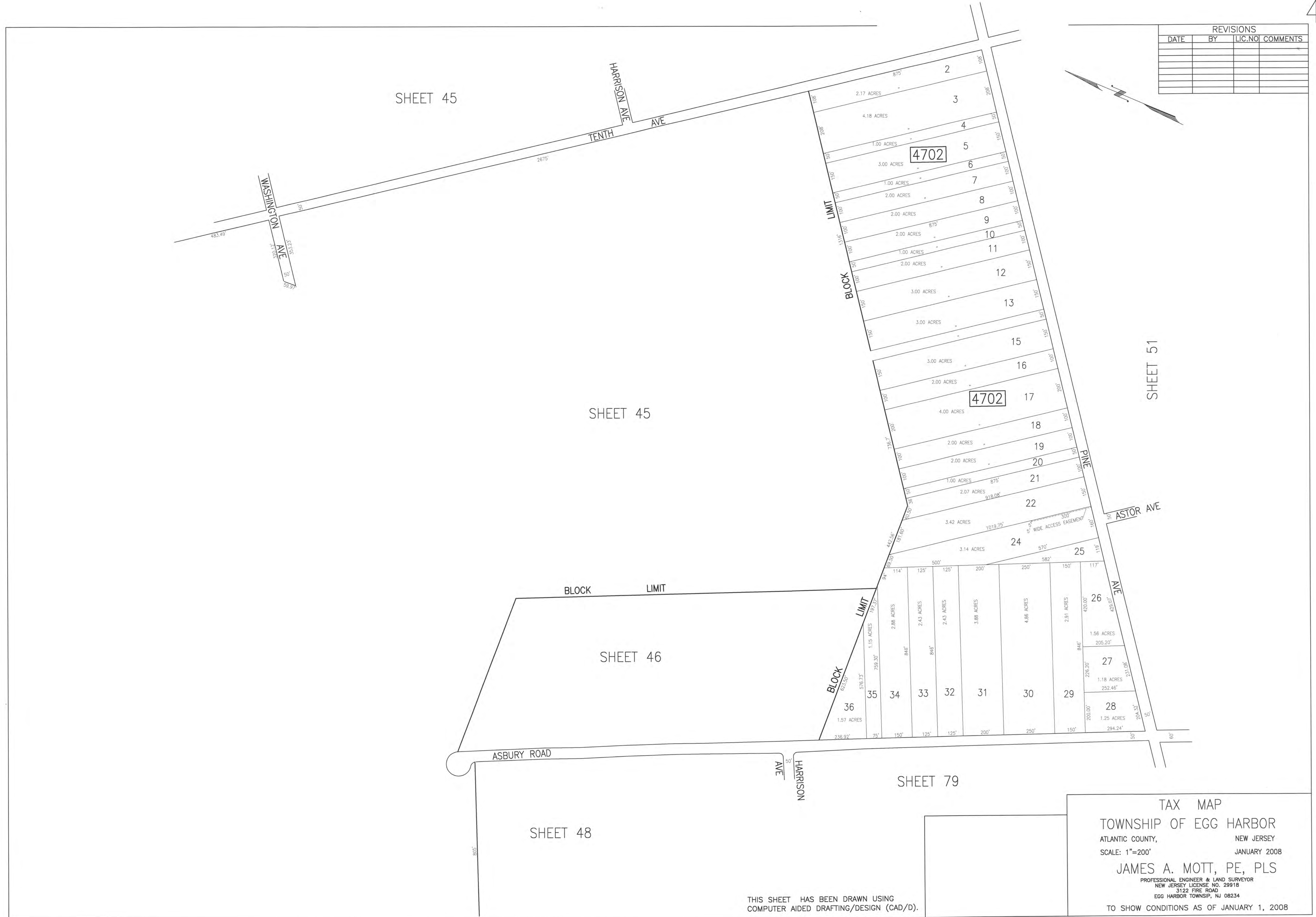


REVISIONS			
DATE	BY	LIC.NO	COMMENTS



**TAX MAP**  
**TOWNSHIP OF EGG HARBOR**  
 ATLANTIC COUNTY, NEW JERSEY  
 SCALE: 1"=200' JANUARY 2008  
**JAMES A. MOTT, PE, PLS**  
PROFESSIONAL ENGINEER & LAND SURVEYOR  
 NEW JERSEY LICENSE NO. 29918  
 3122 FIRE ROAD  
 EGG HARBOR TOWNSHIP, NJ 08234  
 TO SHOW CONDITIONS AS OF JANUARY 1, 2008

THIS SHEET HAS BEEN DRAWN USING  
COMPUTER AIDED DRAFTING/DESIGN (CAD/D).