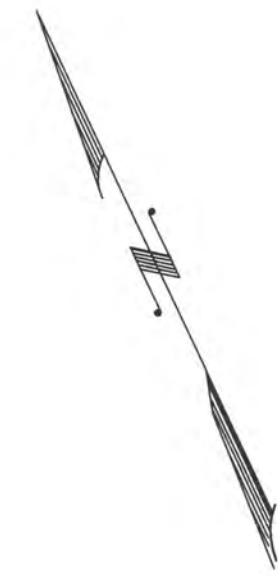
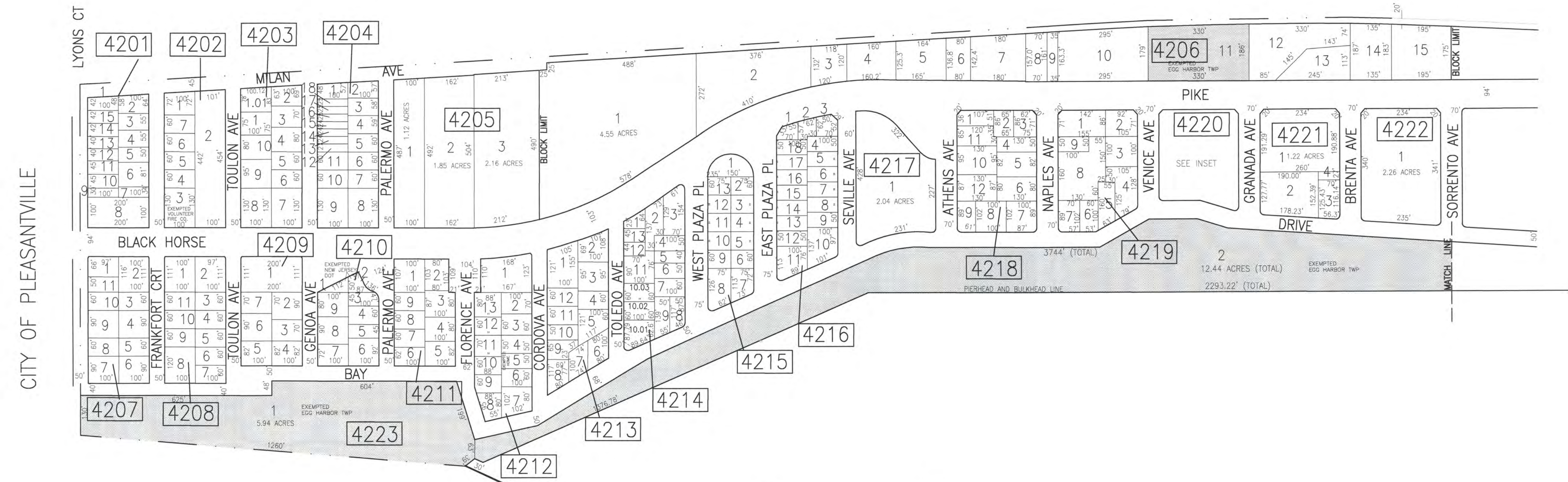


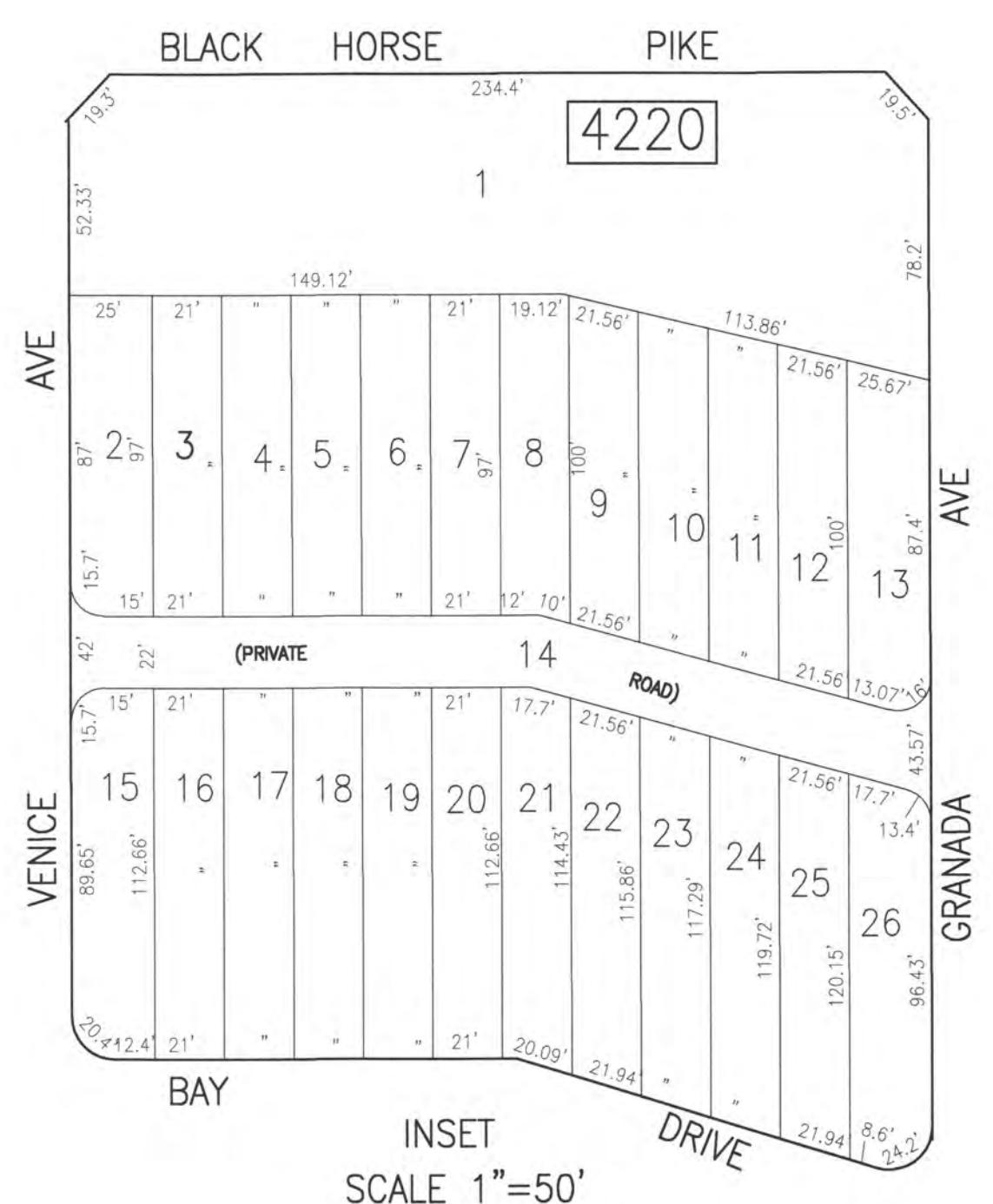
REVISIONS			
DATE	BY	LIC. NO.	COMMENTS
6/18/10	JAM	29918	
12/16/13	JAM	29918	



CITY OF PLEASANTVILLE



SHEET 43



INSET
SCALE 1"=50'

LAKES BAY

CITY OF PLEASANTVILLE

SHADED AREAS INDICATE
EGG HARBOR TOWNSHIP
EXEMPTED PROPERTY
THIS SHEET HAS BEEN DRAWN USING
COMPUTER AIDED DRAFTING/DESIGN (CAD/D).

TAX MAP
TOWNSHIP OF EGG HARBOR
ATLANTIC COUNTY, NEW JERSEY
SCALE: 1"=200' JANUARY 2008
JAMES A. MOTT, PE, PLS
PROFESSIONAL ENGINEER & LAND SURVEYOR
NEW JERSEY LICENSE NO. 29918
3122 FIRE ROAD
EGG HARBOR TOWNSHIP, NJ 08234