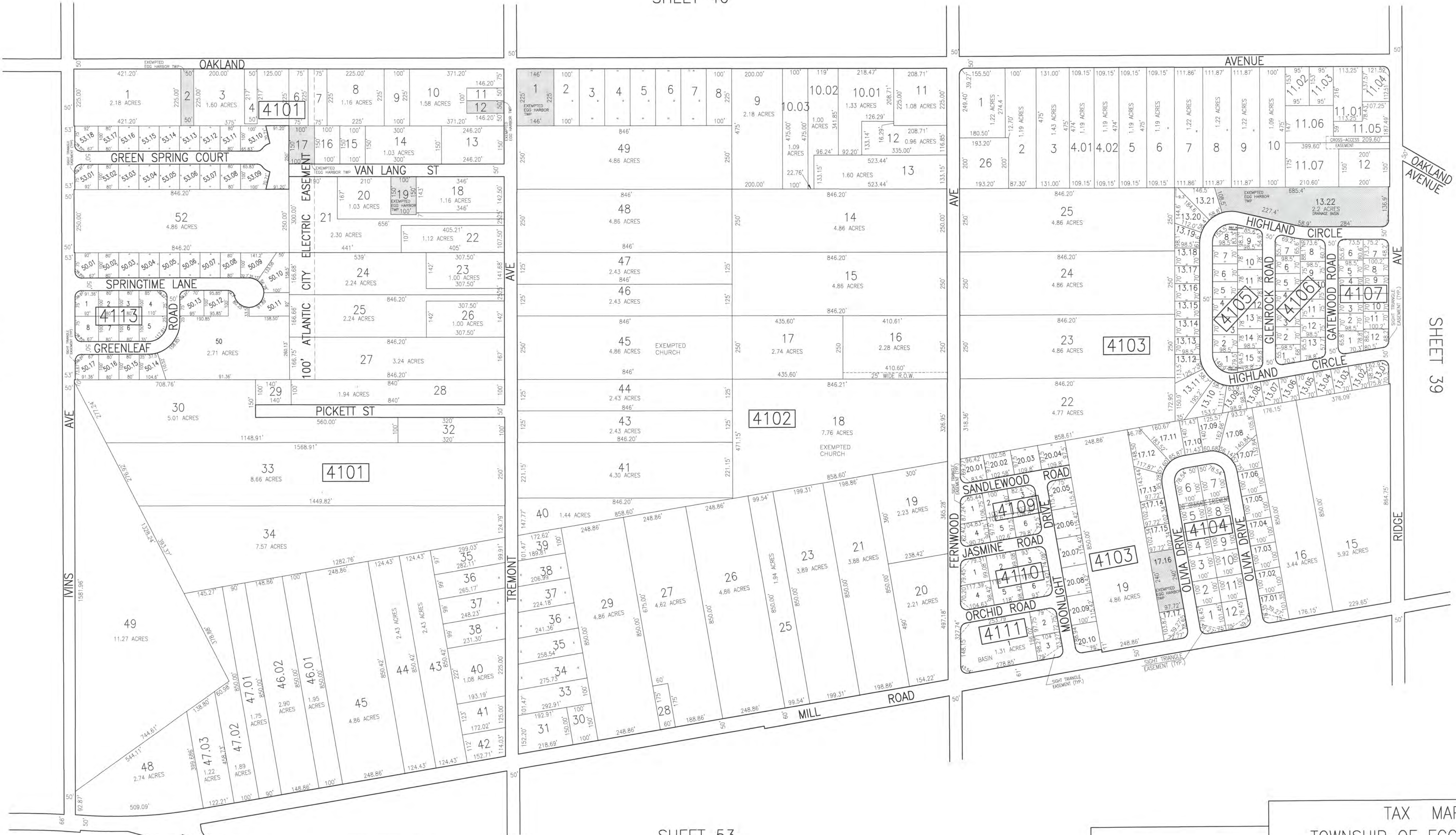
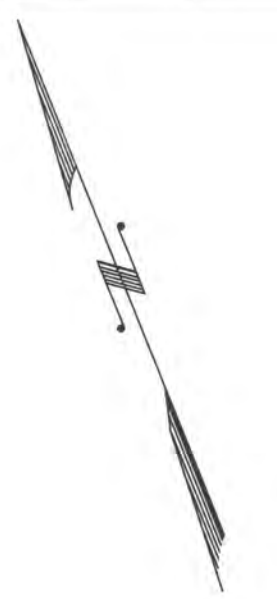


REVISIONS			
DATE	BY	LIC. NO.	COMMENTS
8/19/08	JAM	29918	
11/2/09	JAM	29918	
8/18/10	JAM	29918	
9/19/12	JAM	29918	
12/16/13	JAM	29918	
9/25/15	JAM	29918	

SHEET 40



SHEET 33

SHEET 39

SHEET 52

SHEET 53

TAX MAP
 TOWNSHIP OF EGG HARBOR
 ATLANTIC COUNTY, NEW JERSEY
 SCALE: 1"=200' JANUARY 2010
 JAMES A. MOTT, PE, PLS
 PROFESSIONAL ENGINEER & LAND SURVEYOR
 NEW JERSEY LICENSE NO. 29918
 3122 FIRE ROAD
 EGG HARBOR TOWNSHIP, NJ 08234

SHADED AREAS INDICATE EGG HARBOR TOWNSHIP EXEMPTED PROPERTY
 THIS SHEET HAS BEEN DRAWN USING COMPUTER AIDED DRAFTING/DESIGN (CAD/D).