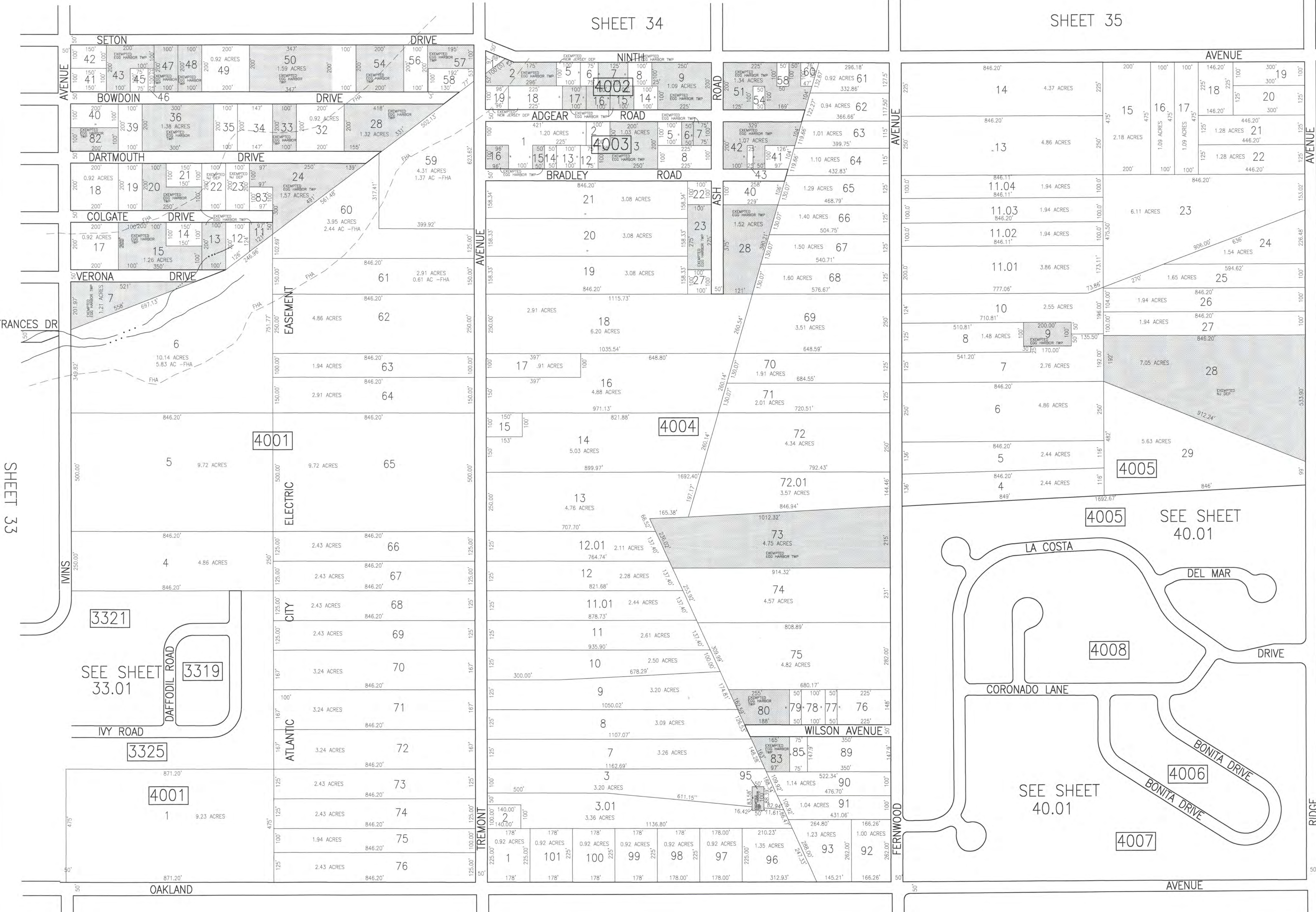
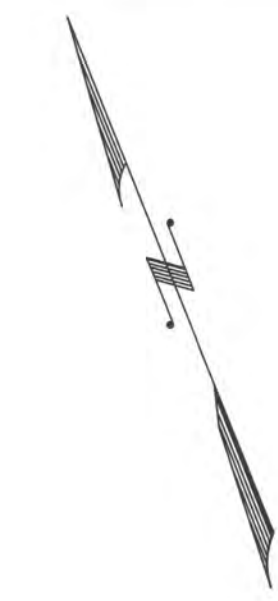


REVISIONS			
DATE	BY	LIC. NO.	COMMENTS
6/23/10	JAM	29918	
3/12/12	JAM	29918	
4/5/12	JAM	29918	
1/7/13	JAM	29918	
12/12/13	JAM	29918	
12/16/13	JAM	29918	
03/14/14	JAM	29918	
12/28/14	JAM	29918	
REVISIONS			
DATE	BY	LIC. NO.	COMMENTS
1/5/15	JAM	29918	
2/28/17	JAM	29918	



SHEET 33

SHEET 34

SHEET 35

SHEET 39

SHEET 41

TAX MAP  
 TOWNSHIP OF EGG HARBOR  
 ATLANTIC COUNTY, NEW JERSEY  
 SCALE: 1"=200'  
 JANUARY 2008  
 JAMES A. MOTT, PE, PLS  
 PROFESSIONAL ENGINEER & LAND SURVEYOR  
 NEW JERSEY LICENSE NO. 29918  
 3122 FIRE ROAD  
 EGG HARBOR TOWNSHIP, NJ 08234

SHADED AREAS INDICATE  
 EGG HARBOR TOWNSHIP  
 EXEMPTED PROPERTY

THIS SHEET HAS BEEN DRAWN USING  
 COMPUTER AIDED DRAFTING/DESIGN (CAD/D).