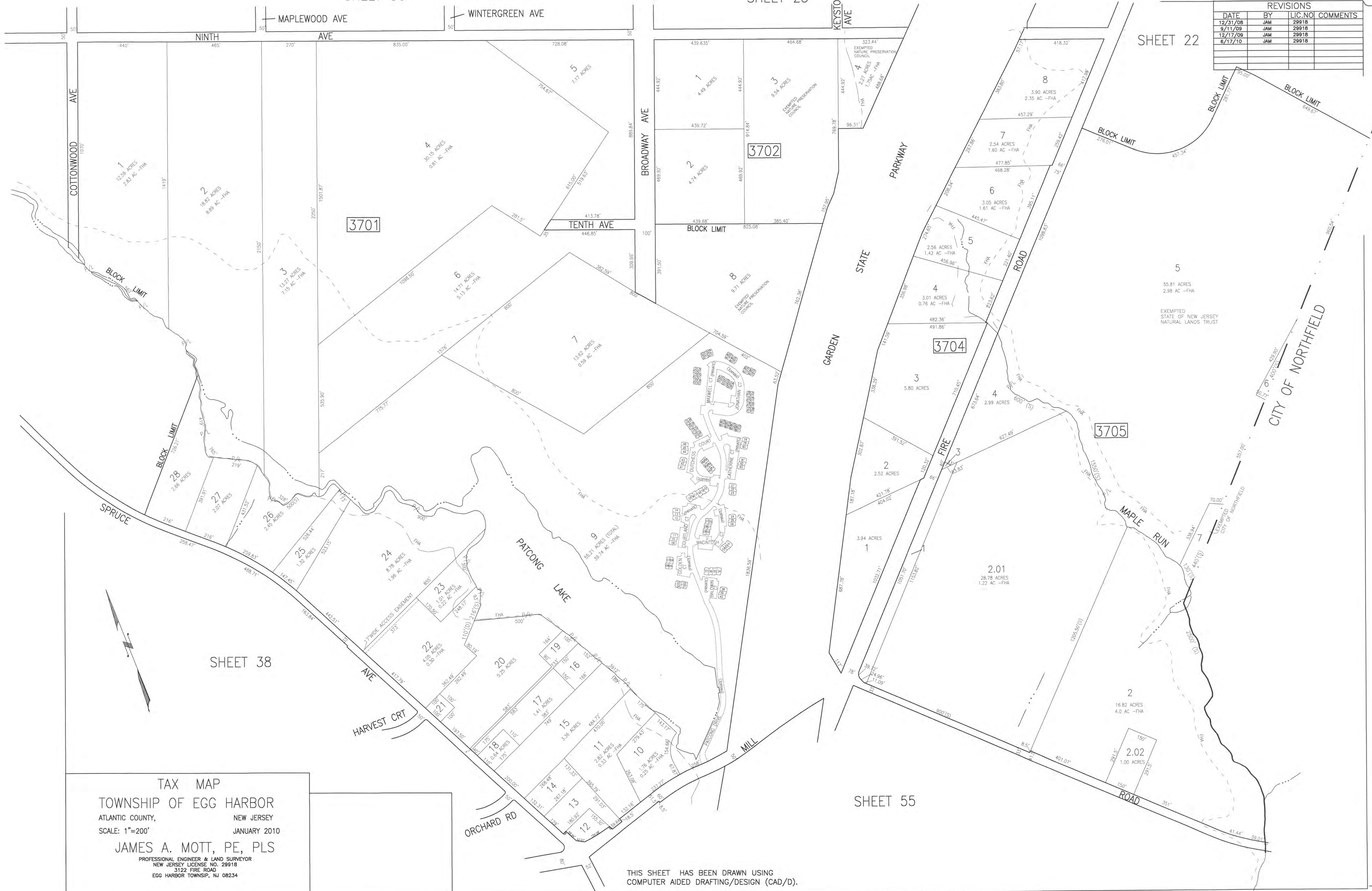


REVISIONS			
DATE	BY	LIC. NO.	COMMENTS
12/31/08	JAM	2991B	
9/11/09	JAM	2991B	
12/17/09	JAM	2991B	
6/17/10	JAM	2991B	



TAX MAP  
 TOWNSHIP OF EGG HARBOR  
 ATLANTIC COUNTY, NEW JERSEY  
 SCALE: 1"=200' JANUARY 2010  
 JAMES A. MOTT, PE, PLS  
 PROFESSIONAL ENGINEER & LAND SURVEYOR  
 NEW JERSEY LICENSE NO. 2991B  
 3122 FIRE ROAD  
 EGG HARBOR TOWNSHIP, NJ 08234

THIS SHEET HAS BEEN DRAWN USING  
 COMPUTER AIDED DRAFTING/DESIGN (CAD/D).