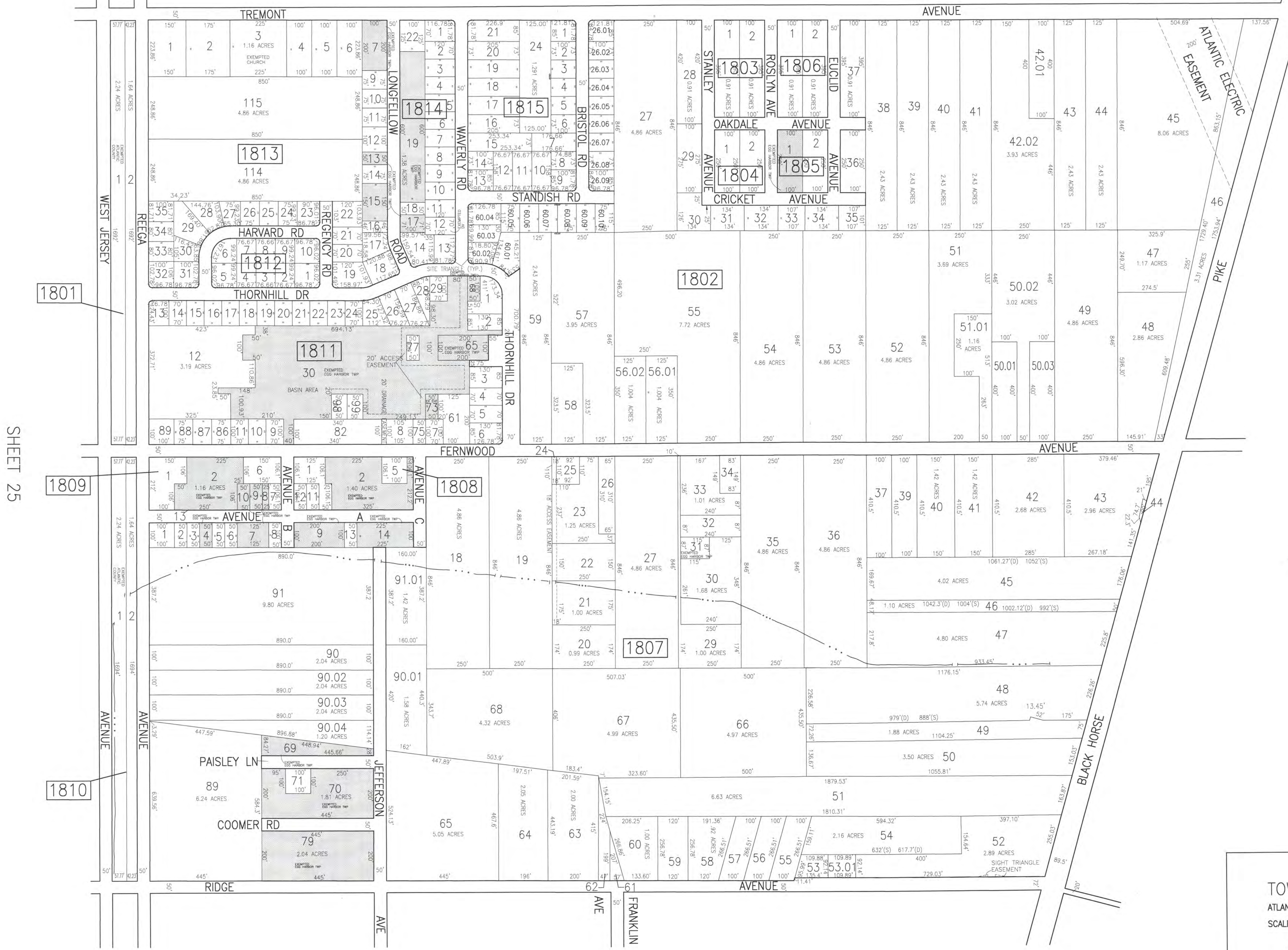


SHEET 17



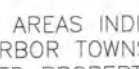
REVISIONS			
DATE	BY	LIC. NO.	COMMENTS
9/15/09	JAM	29918	
6/16/10	JAM	29918	
3/12/12	JAM	29918	
8/28/12	JAM	29918	
6/12/13	JAM	29918	
12/19/13	JAM	29918	
12/25/14	JAM	29918	
1/2/15	JAM	29918	
REVISIONS			
DATE	BY	LIC. NO.	COMMENTS
1/7/15	JAM	29918	



SHEET 25

SHEET 13

SHEET 19

 SHADED AREAS INDICATE
 EGG HARBOR TOWNSHIP
 EXEMPTED PROPERTY

THIS SHEET HAS BEEN DRAWN USING
COMPUTER AIDED DRAFTING/DESIGN (CAD/D).

TAX MAP
 TOWNSHIP OF EGG HARBOR
 ATLANTIC COUNTY, NEW JERSEY
 SCALE: 1"=200'
 JANUARY 2010
JAMES A. MOTT, PE, PLS
 PROFESSIONAL ENGINEER & LAND SURVEYOR
 NEW JERSEY LICENSE NO. 29918
 3122 FIRE ROAD
 EGG HARBOR TOWNSHIP, NJ 08234