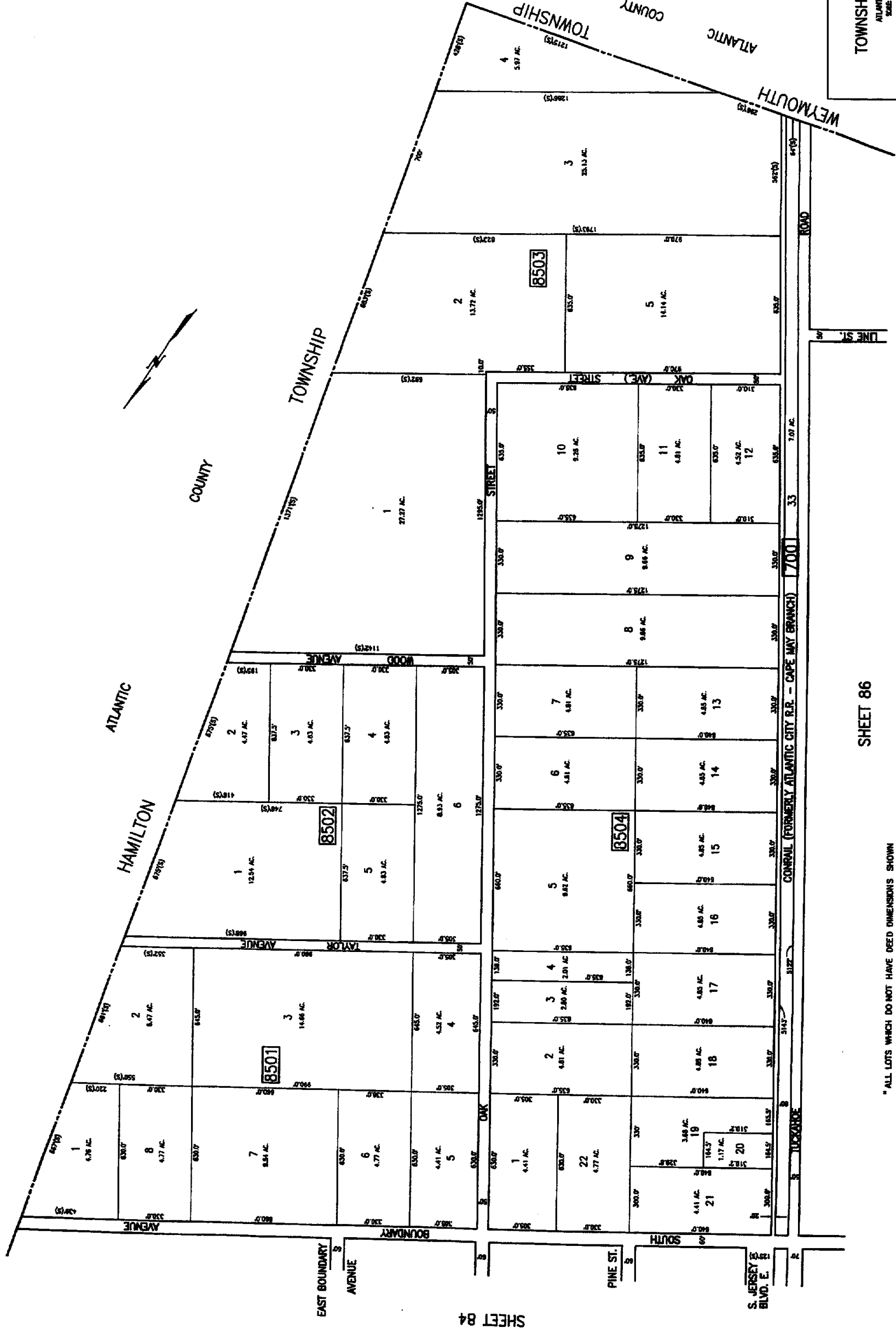


85
542

THE JERSEY DEPARTMENT OF TREASURY
DIVISION OF TAXATION
LOCAL REVENUE SECTION
PREPARED AS A FOR THE PURPOSE OF THE
LOCAL REVENUE ACT OF 1976
AND THE LOCAL REVENUE ACT OF 1980
DATE: 1983 2 1 1983

TAX MAP
TOWNSHIP OF BUENA VISTA
ATLANTIC COUNTY, NEW JERSEY
SCALE 1" = 200' DATE: JANUARY 1983
CHRIS R. REHMANN
PROFESSIONAL ENGINEER & LAND SURVEYOR
NEW JERSEY LICENSE NO. 11119
HADDONFIELD, NEW JERSEY



SHEET 84

SHEET 86

"ALL LOTS WHICH DO NOT HAVE DEED DIMENSIONS SHOWN
WERE SCALED DURING TAX MAP PREPARATION IN 1988"

CONRAIL (FORMERLY ATLANTIC CITY R.R. - CAPE MAY BRANCH) 700' 33 7.07 AC.