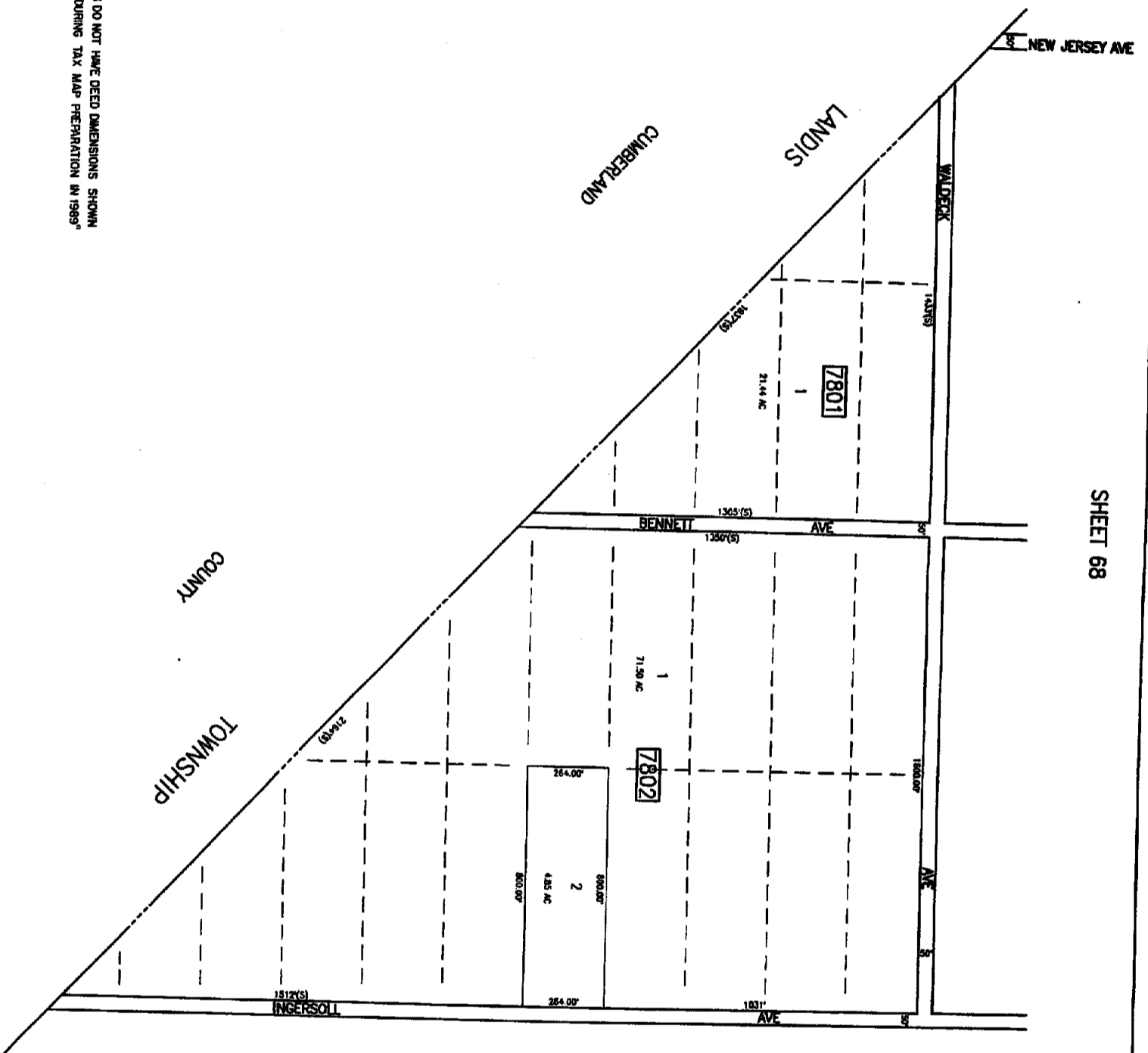


SHEET 68

SHEET 67

78



"ALL LOTS WHICH DO NOT HAVE DEED DIMENSIONS SHOWN WERE SCALED DURING TAX MAP PREPARATION IN 1989"

SHEET 79

FOR THE TOWNSHIP OF BUENA VISTA
 LOCAL TAX MAP PREPARATION
 AUTHORITY IS GRANTED TO THE TOWNSHIP
 ENGINEER TO PREPARE AND RECORD
 LOCAL TAX MAPS FOR THE TOWNSHIP OF
 BUENA VISTA, NEW JERSEY.
 THE TOWNSHIP ENGINEER SHALL BE
 RESPONSIBLE FOR THE ACCURACY OF
 THE LOCAL TAX MAPS.
 THE TOWNSHIP ENGINEER SHALL BE
 RESPONSIBLE FOR THE ACCURACY OF
 THE LOCAL TAX MAPS.
 THE TOWNSHIP ENGINEER SHALL BE
 RESPONSIBLE FOR THE ACCURACY OF
 THE LOCAL TAX MAPS.
 THE TOWNSHIP ENGINEER SHALL BE
 RESPONSIBLE FOR THE ACCURACY OF
 THE LOCAL TAX MAPS.

TAX MAP
TOWNSHIP OF BUENA VISTA
 ATLANTIC COUNTY, NEW JERSEY
 SCALE: 1" = 200' (SEE SHEET 100)
CHRIS R. REHMANN
 PROFESSIONAL ENGINEER & LAND SURVEYOR
 1000 JEROME TURNPIKE, SUITE 1110
 HUNTSVILLE, ALABAMA 35894
 (205) 582-1111

535