

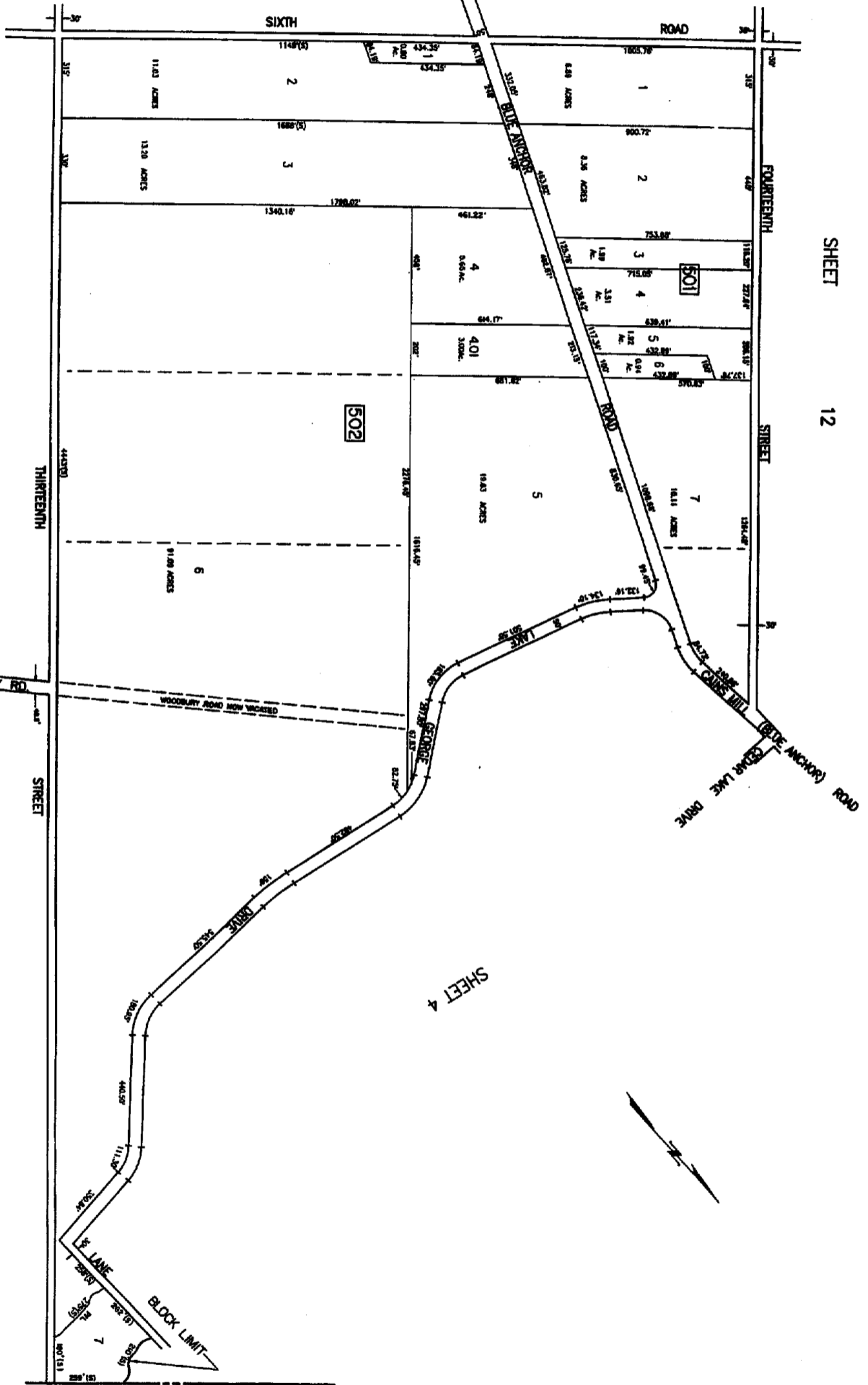
SHEET 13

SHEET 12

* ALL LOTS WHICH DO NOT HAVE DEED DIMENSIONS SHOWN WERE SCALED DURING TAX MAP PREPARATION IN 1988. *

SHEET 6

SHEET 4



BOROUGH OF FOLSOM
ATLANTIC COUNTY

5

THE ABOVE INFORMATION OF THE TOWNSHIP TAX MAP WAS PREPARED BY THE TOWNSHIP ENGINEER OF FOLSOM, NEW JERSEY, IN ACCORDANCE WITH THE PROVISIONS OF CHAPTER 128 OF THE STATUTES OF NEW JERSEY, AS AMENDED, AND THE REGULATIONS OF THE BOARD OF TAXATION, NEW JERSEY, IN 1988.

DATE: 11/14/88
BY: [Signature]
TOWNSHIP ENGINEER

TAX MAP
TOWNSHIP OF BUENA VISTA
ATLANTIC COUNTY, NEW JERSEY
SCALE: 1" = 500' DATE: JANUARY 1989
CHRIS R. REHMANN
TOWNSHIP ENGINEER & TAX MAP ENGINEER
NEW JERSEY LICENSE NO. 11119
NEW JERSEY BOARD OF TAXATION
TREASURER: NEW JERSEY STATE

461