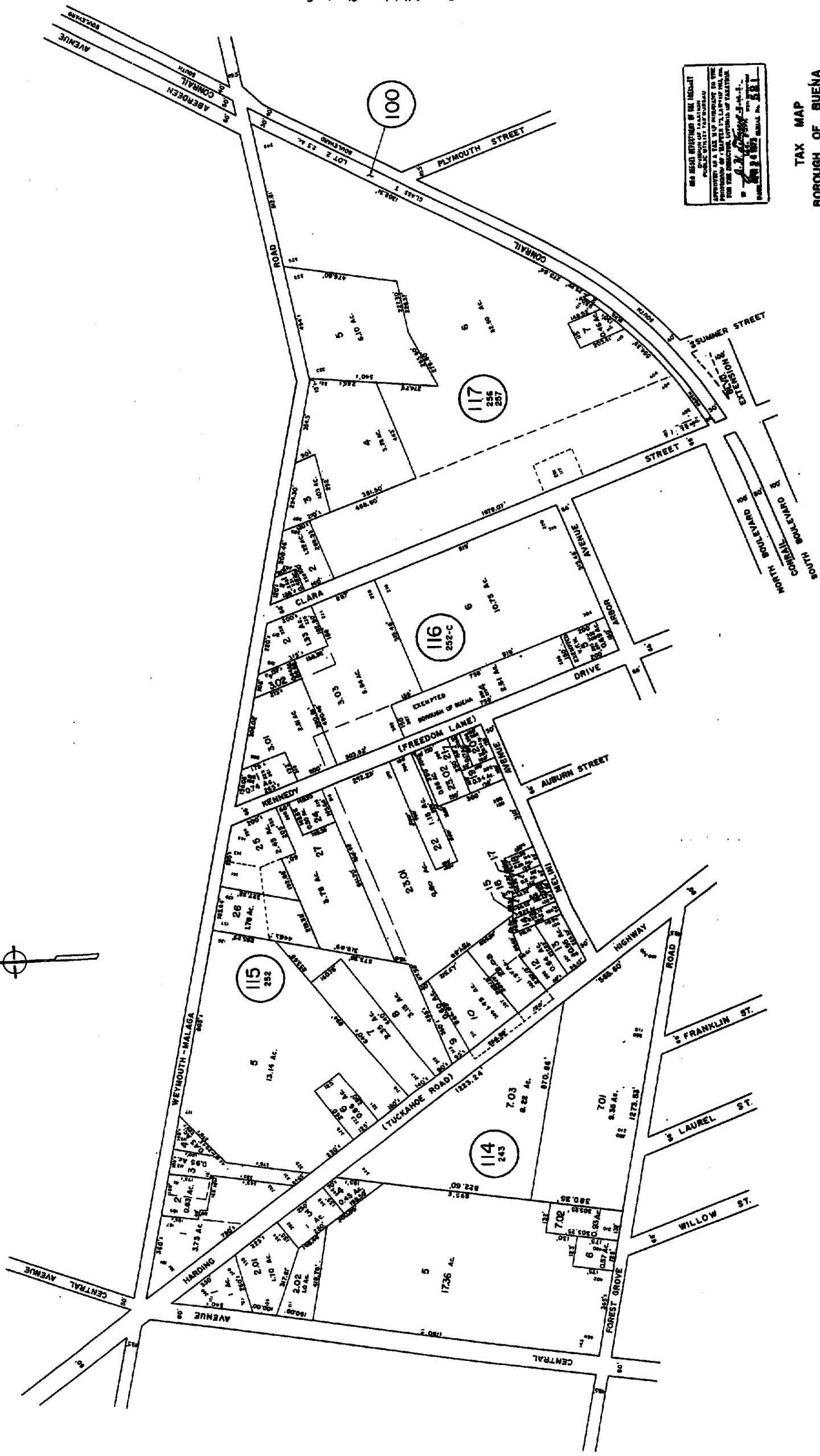


See Adjoining Sheet 2.

H

436



See Adjoining Sheet 3

See Adjoining Sheet 5

THE BUREAU OF TAXATION OF THE STATE OF NEW JERSEY
 HAS BEEN ESTABLISHED BY THE LEGISLATURE
 AND IS THE SUCCESSOR TO THE BUREAU OF TAXATION
 OF THE STATE OF NEW JERSEY WHICH WAS
 ESTABLISHED BY THE LEGISLATURE OF THE
 STATE OF NEW JERSEY IN 1876.
 THE BUREAU OF TAXATION OF THE STATE OF NEW JERSEY
 IS A PUBLIC BODY AND IS NOT A PART OF THE
 GOVERNMENT OF THE STATE OF NEW JERSEY.
 THE BUREAU OF TAXATION OF THE STATE OF NEW JERSEY
 IS A PUBLIC BODY AND IS NOT A PART OF THE
 GOVERNMENT OF THE STATE OF NEW JERSEY.

TAX MAP
BOROUGH OF BUENA

ATLANTIC COUNTY, NEW JERSEY
 JANUARY 1, 1973

SCALE: 1" = 200'
 PRICE WALKER ASSOCIATES
 PLAINFIELD, N.J.

See Adjoining Sheet 10 — See Adjoining Sheet 5

See Adjoining Sheet 9

UPDATED BY A.E. BERNARD L.S. 9344 728-88 REVISED - W.C. KIRSCH L.S. 12356 AUG. 6, 1986.