

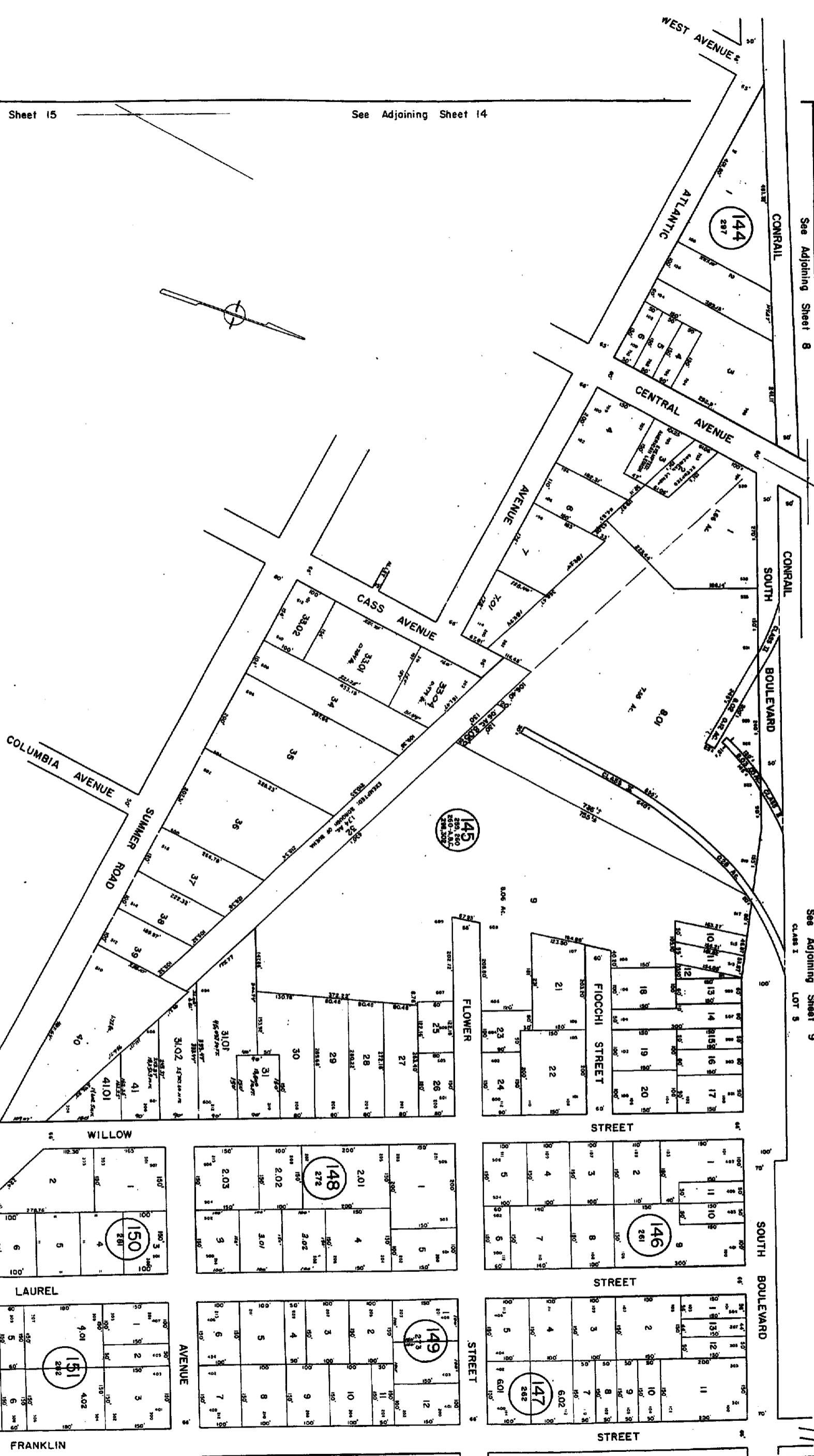
See Adjoining Sheet 15

See Adjoining Sheet 14

See Adjoining Sheet 8

See Adjoining Sheet 9

CLASS 1 LOT 5



FOR EACH QUARTER OF THE YEAR
 ALL TAXPayers TO BE ADVISED
 THAT THE TAX MAPS OF THE
 BOROUGH OF BUENA, NEW JERSEY
 ARE BEING RE-EVALUATED TO THE
 YEAR 1973. THE RE-EVALUATION
 WILL BE COMPLETED BY THE
 END OF THE YEAR. THE TAXPAYER
 WILL BE ADVISED OF ANY
 CHANGES IN HIS TAX LIABILITY
 BY THE BOROUGH OFFICE OF
 TAXATION. THE TAXPAYER
 SHOULD CONTACT THE OFFICE
 OF TAXATION AT 443 SUMMER
 ROAD, BUENA, N.J. 08009
 FOR FURTHER INFORMATION.

TAX MAP
BOROUGH OF BUENA
NEW JERSEY
JANUARY 1, 1973
 SCALE: 1" = 100'

PRICE WALKER ASSOCIATES
PLANNINGVILLE, NJ.

UPDATED BY A. E. BERNARD DATED 5-7-72
 See Adjoining Sheet 15
 UPDATED BY A. E. BERNARD 5-9-72
 UPDATED BY A. E. BERNARD DATED 9-16-72
 REVISED BY W. C. KIRSCH L.S. #12356
 7-8-85

See Adjoining Sheet 16
443
443

See Adjoining Sheet 12