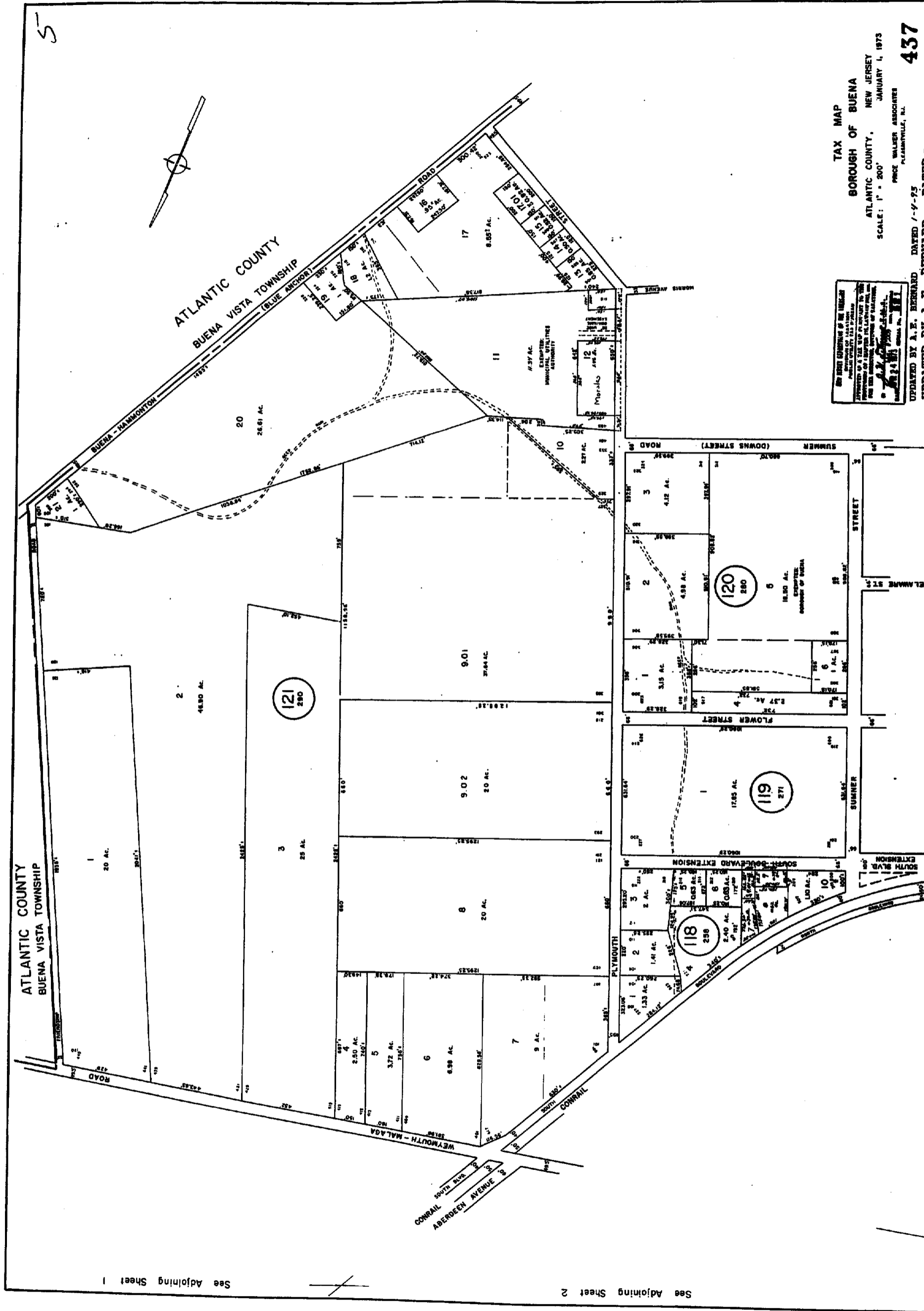


5



See Adjoining Sheet 1

See Adjoining Sheet 2

See Adjoining Sheet 4

See Adjoining Sheet 12

THE BEST COPY OF THE ORIGINAL
WAS FILED WITH THE
TREASURER OF THE COUNTY OF BUENA
ON THE 10TH DAY OF JANUARY 1973
BY A. E. BERNARD, COUNTY CLERK

TAX MAP
BOROUGH OF BUENA
ATLANTIC COUNTY, NEW JERSEY
SCALE: 1" = 200'
PRICE WALKER ASSOCIATES
PLEASANTVILLE, N.J.

437

UPDATED BY A. E. BERNARD DATED 1-9-73
DATED 9-7-69

REVISÉ BY W.C. KIRBCH L.S. 12353
3-6-66