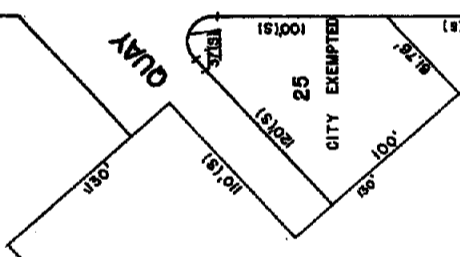
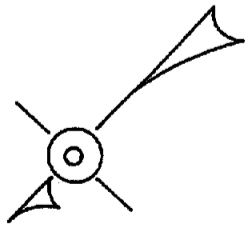


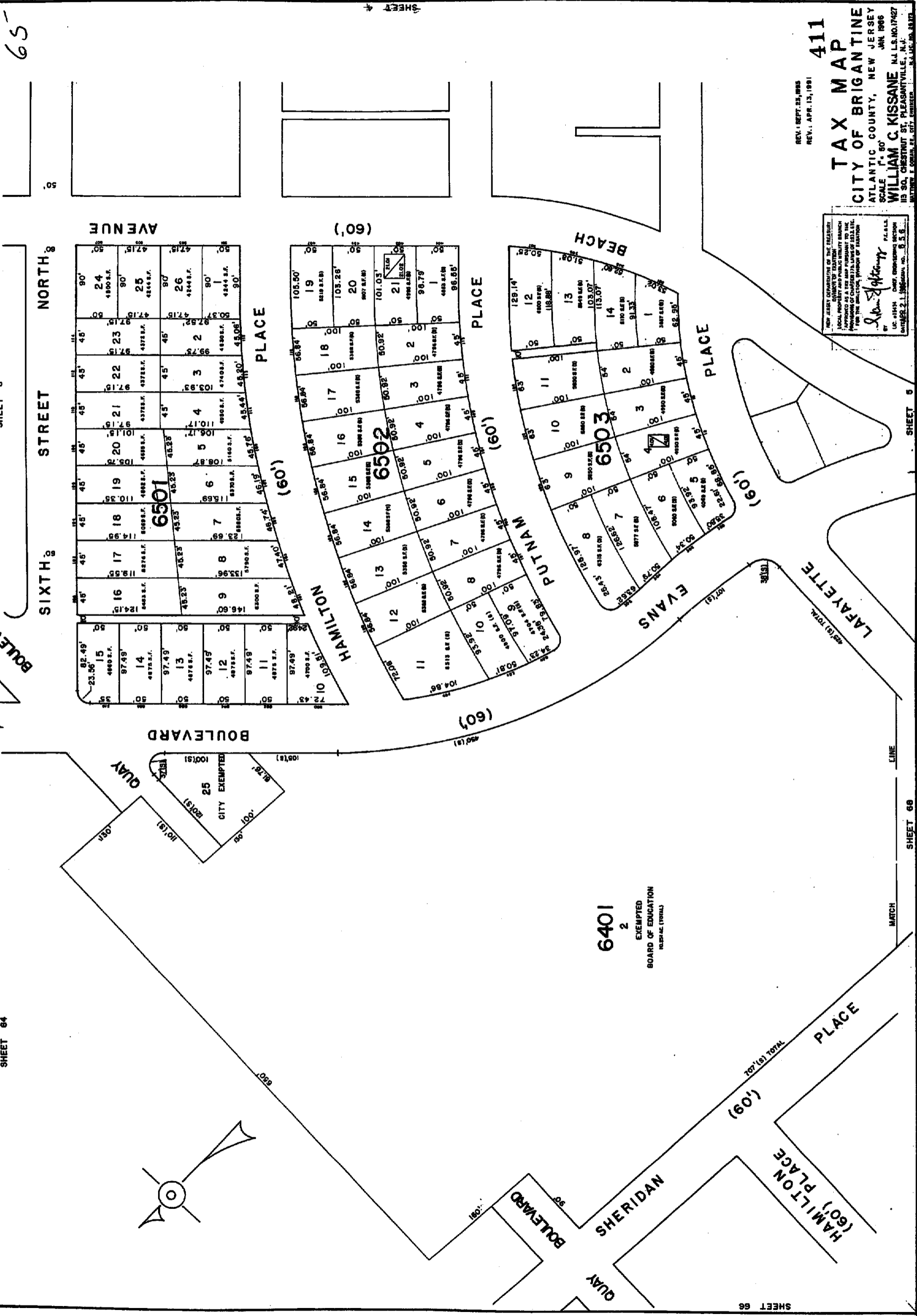
SHEET 64

SHEET 3

65



6401
2
EXEMPTED
BOARD OF EDUCATION
RESUAL (TOTAL)



REV. SEPT. 23, 1983
REV. APR. 12, 1981
411
TAX MAP
CITY OF BRIGANTINE
ATLANTIC COUNTY, NEW JERSEY
SCALE 1" = 50'
WILLIAM C. KISSANE
N.J. L.S. NO. 17427
113 SO. CHESTNUT ST. PLEASANTVILLE, N.J.
MATTHEW J. COGAN, JR., CITY ENGINEER N.J. L.S. NO. 43173

NEW JERSEY DEPARTMENT OF THE TREASURY
LOCAL PROPERTY AND PUBLIC UTILITY BRANCH
APPROVED AS A TAX MAP PURSUANT TO THE
PROVISIONS OF CHAPTER 174, LAWS OF 1981,
FOR THE PURPOSES OF THE PROVISIONS OF
CHAPTER 174, LAWS OF 1981.
BY: *William C. Kissane* P.L.L.C.
LIC. 11414 CHART. ENGINEERING SECTION
DATE: 2.1.1985

SHEET 66

SHEET 68

SHEET 6